

BARNUM LAKE SUBDIVISION

PART OF THE WEST FRACTIONAL HALF OF THE SOUTH EAST QUARTER SECTION 2 T.5 N. R.6 E. MICHIGAN MERIDIAN TOWNSHIP OF FENTON GENESEE COUNTY MICHIGAN

SCALE 1 INCH = 100 FEET
0 50 100 200 300 400
ALL DIMENSIONS ARE IN FEET & DECIMALS THEREOF

DEDICATION

KNOW ALL MEN BY THESE PRESENTS, That We, L. E. Bridgman and L. L. Simons, for the Genesee County Savings Bank, a Michigan Banking Corporation, as proprietors, have caused the land embraced in the annexed plat to be surveyed, laid out and platted, to be known as "BARNUM LAKE SUBDIVISION" Part of the West Fractional Half of the South East Quarter Section 2 T.5 N. R.6 E. Michigan Meridian, Township of Fenton, Genesee County, Michigan and that the roads as shown on said plat are hereby dedicated to the use of the public with the understanding and restriction that the Barnum Lake Road as shown on said plat is to remain as shown and is not to be permitted to extend to the North Long Lake Road either as a private or public road.

Signed and Sealed in Presence of

Stuart Ballou
Stuart Ballou

R. E. Parker
R. E. Parker

STATE OF MICHIGAN
County of Genesee

On this 15 day of September 1911, before me, a notary public, in and for said county personally appeared the above named L. E. Bridgman and L. L. Simons, Vice President and Assistant Cashier, respectively of the Genesee County Savings Bank, a Michigan Banking Corporation, known to me to be the persons who executed the above dedication and who acknowledged the same to be the free act and deed of said corporation by authority of its Board of Directors, and that the seal affixed to said instrument is the corporate seal of said corporation.

My Commission Expires: August 24, 1914

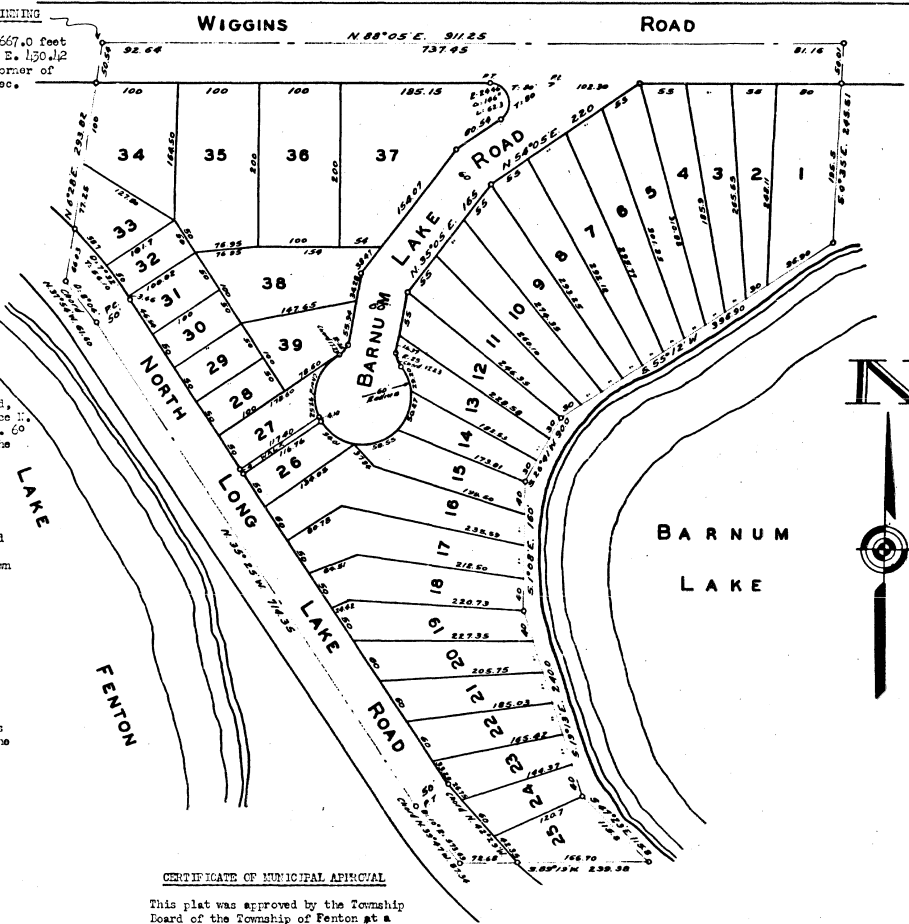
L. E. Bridgman
L. E. Bridgman - Vice President

L. L. Simons
L. L. Simons - Assistant Cashier

G. C. Bagelow
Notary Public, Genesee County, Michigan.

PLACE OF BEGINNING

S. 1° 35' W. 1667.0 feet
and N. 88° 05' E. 430.42
feet from NW corner of
W. P. & S. Sec.
2 25th RGE



DESCRIPTION OF LAND PLATTED

The land embraced in the annexed plat of "BARNUM LAKE SUBDIVISION" part of the West Fractional Half of the South East Quarter Section 2 T.5 N. R.6 E. Michigan Meridian, Township of Fenton, Genesee County, Michigan is described as follows: Beginning at a point in the centerline of Wiggins Road, so-called which is S. 1° 35' W. 1667.0 feet and N. 88° 05' E. 430.42 feet from the North West corner of the West Fractional Half of the South East Quarter of said Section 2, Thence N. 88° 05' E. 911.25 feet, thence S. 0° 35' E. 215.51 feet, thence S. 55° 12' W. 296.50 feet, thence S. 26° 11' W. 50.0 feet, thence S. 46° E. 160 feet, thence S. 15° 13' E. 210.0 feet, thence S. 17° 23' E. 115.6 feet, thence S. 0° 19' W. 290.50 feet to centerline of North Long Lake Road, thence along said centerline on a 10° curve to the right chord bearing and distance N. 39° 17' W. 87.21 feet, thence N. 35° 25' W. 711.35 feet, thence on a curve to the left chord bearing and distance N. 37° 51' W. 61.6 feet, thence N. 6° 28' E. 292.82 feet to the place of beginning. All lots shown on Barnum Lake include land to waters edge between the extended side lines of said lots.

COUNTY TREASURER'S CERTIFICATE RELATING TO TAXES

Office of County Treasurer, Genesee County, Michigan
I hereby certify, That there are no tax liens or titles held by the state on the lands described hereon; and that there are no tax liens or titles held by individuals on said lands for the five years preceding the 9th day of September 1911, and that the taxes for said period of five years are paid as shown by the records of this office.
This certificate does not apply to taxes, if any, now in process of collection by township, city, or village collection officers.

D. Pearson White
D. Pearson White - County Treasurer
Deputy

SURVEYOR'S CERTIFICATE

I hereby certify that the plat hereon delineated is a correct one and that permanent metal monuments consisting of bars not less than one half inch in diameter and 40 inches in length encased in a concrete cylinder at least four inches in diameter and 40 inches in depth have been placed at points marked thus "c" as thereon shown at all angles in the boundaries of the land platted, at the intersections of streets, and at the intersections of streets with the boundaries of the plat as shown on said plat.

Ora F. Gould - Reg. Land Surveyor # 090

CERTIFICATE OF APPROVAL BY COUNTY BOARD

This plat was approved on the 12 day of Sept 1911.

Frank L. McVahney
Frank L. McVahney - Judge of Probate

D. Pearson White
D. Pearson White - County Treasurer
Deputy
George C. Dunn
George C. Dunn - County Clerk

CERTIFICATE OF APPROVAL BY BOARD OF COUNTY ROAD COMMISSIONERS

This plat has been examined and was approved on the 9th day of September 1911 by the Genesee County Board of Road Commissioners.

Arthur W. Becker
Arthur W. Becker - Chairman
C. E. Ballard
C. E. Ballard - Commissioner
Play F. Alger
Play F. Alger - Commissioner

CERTIFICATE OF MUNICIPAL APPROVAL

This plat was approved by the Township Board of the Township of Fenton at a meeting held Sept 4th 1911.

Gustav C. Lutz
Gustav C. Lutz - Clerk

I HEREBY CERTIFY THAT THIS COPY IS A TRUE COPY OF THE MAP OR PLAT FORWARDED THE REGISTER OF DEEDS FOR RECORDING.

COMPARED Stuart Ballou
Stuart Ballou
Stuart Ballou - DEPUTY AUDITOR GENERAL

FILED IN AUDITOR GENERAL'S DEPT.

Mayno Jewell
Mayno Jewell - DEPUTY AUDITOR GENERAL

Examined and Approved

Mayno Jewell
Mayno Jewell - DEPUTY AUDITOR GENERAL

Register's Office
Genesee County, ss.
Plat of Barnum Lake Subdivision
was Recorded this 17 day of September A.D. 1911 at 11:00 O'clock P.M. in Liber 17 of 1911 at Fenton on Page 42
Stuart Ballou
Stuart Ballou - Register of Deeds

28258