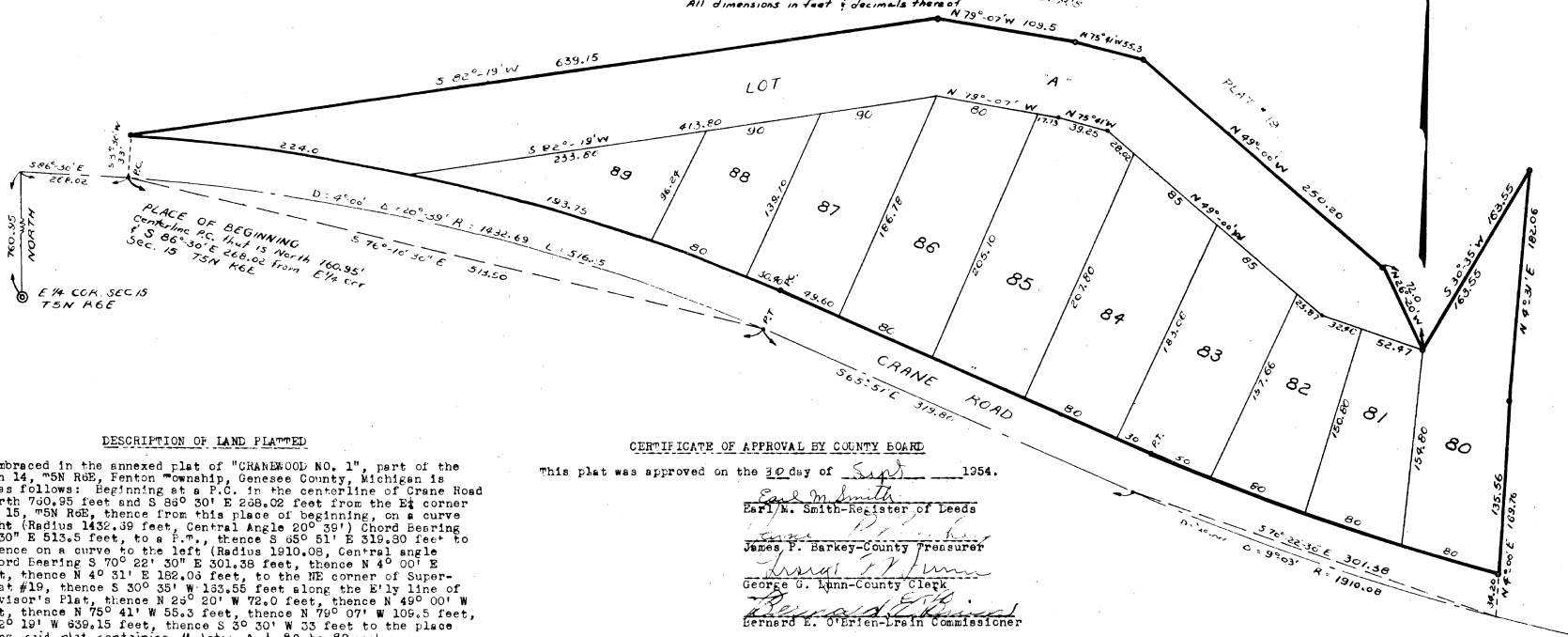


CRANEWOOD NO. 1

PART OF THE NW 1/4 SECTION 14 T5N R6E FENTON TOWNSHIP GENESEE COUNTY MICHIGAN

SCALE 1" = 60'
All dimensions in feet & decimals thereof



DESCRIPTION OF LAND PLATTED

The land embraced in the annexed plat of "CRANEWOOD NO. 1", part of the NW 1/4 Section 14, T5N R6E, Fenton Township, Genesee County, Michigan is described as follows: Beginning at a P.C. in the centerline of Crane Road that is North 700.95 feet and S 89° 30' E 268.02 feet from the E 1/4 corner of Section 15, T5N R6E, thence from this place of beginning, on a curve to the right (Radius 1432.39 feet, Central Angle 20° 39') Chord Bearing S 76° 10' 30" E 513.5 feet, to a P.C., thence S 85° 51' E 319.30 feet to a P.C., thence on a curve to the left (Radius 1910.08, Central angle 9° 03') Chord Bearing S 70° 22' 30" E 301.38 feet, thence N 4° 00' E 139.78 feet, thence N 4° 31' E 182.03 feet, to the NE corner of Supervisor's Plat #19, thence S 30° 35' W 133.55 feet along the E 1/4 line of said Supervisor's Plat, thence N 25° 20' W 72.0 feet, thence N 49° 00' W 250.20 feet, thence N 75° 41' W 55.3 feet, thence N 79° 07' W 109.5 feet, thence S 82° 19' W 639.15 feet, thence S 30° 30' W 33 feet to the place of beginning, said plat containing 11 lots: A & 80 to 89 inclusive.

DEDICATION

KNOW ALL MEN BY THESE PRESENTS, that I, Edith L. Crane, as proprietor, have caused the land embraced in the annexed plat to be surveyed, laid out and platted, to be known as "CRANEWOOD NO. 1", part of the NW 1/4 Section 14, T5N R6E, Fenton Township, Genesee County, Michigan, and that the road on said plat is hereby dedicated to the use of the public.

Witnesses:

John C. Mackie
John C. Mackie
Darwin L. Hauglic
Darwin L. Hauglic

STATE OF MICHIGAN)
County of Genesee) ss

On this 30 day of Sept, 1954, before me, a notary public in and for said county, personally appeared the above named Edith L. Crane, known to me to be the person who executed the above dedication, and who acknowledged the same to be her free act and deed.

My commission expires:

Notary Public, Genesee County
Laura Welch

CERTIFICATE OF MUNICIPAL APPROVAL

This plat was approved by the Township Board of the Township of Fenton at a meeting held on the 14 day of September, 1954.

Gus C. Lutz
Gus C. Lutz, Township Clerk

CERTIFICATE OF APPROVAL BY COUNTY BOARD

This plat was approved on the 30 day of Sept, 1954.

Earl M. Smith
Earl M. Smith-Register of Deeds
James P. Barkey
James P. Barkey-County Treasurer
George G. Minn
George G. Minn-County Clerk
Bernard E. O'Brien-Lain
Bernard E. O'Brien-Lain-Commissioner

CERTIFICATE OF APPROVAL BY BOARD OF COUNTY ROAD COMMISSIONERS

This plat has been examined and was approved on the 30 day of Sept, 1954 by the Genesee County Board of Road Commissioners.

C. W. Bullard-Commissioner
A. Harold Bergh-Commissioner
Rob't G. Stoddard
Rob't G. Stoddard-Commissioner

SURVEYOR'S CERTIFICATE

I hereby certify that the plat hereon delineated is a correct one, and that permanent metal monuments consisting of bars not less than one-half inch in diameter and 48 inches in length encased in a concrete cylinder at least four inches in diameter and 48 inches in depth have been placed at all points marked thus "a" as thereon shown at all angles in the plat boundaries, at the intersections of streets and at the intersection of streets with the boundaries of the plat as shown on said plat.

John C. Mackie
John C. Mackie, R.L.S. #7434

COUNTY TREASURER'S CERTIFICATE RELATING TO TAXES

Office of the County Treasurer, Genesee County, Michigan.

I hereby certify that there are no tax liens or titles held by the State on the lands described hereon, and that there are no tax liens or titles held by individuals on said lands for the five years preceding the 30 day of Sept, 1954, and that the taxes for said period of five years are paid as shown by the records of this office.

This certificate does not apply to taxes, if any, now in process of collection by township, city, or village collection officers.

James P. Barkey
James P. Barkey-County Treasurer

John C. Mackie
John C. Mackie

FLINT SURVEYING COMPANY

35536