

CROOKED LAKE PLAT

PART OF NE 1/4 SECTION 13, T5N. R6E, MICHIGAN MERIDIAN,
FENTON TWP. GENESEE COUNTY, MICHIGAN

SCALE 1 INCH = 100 FEET



ALL DIMENSIONS ARE IN FEET AND DECIMALS THEREOF

DEDICATION

KNOW ALL MEN BY THESE PRESENTS, That we William G. Hovey as proprietor, and Edna E. Hovey his wife, and Edward W. Gute as proprietor and Marion Gute his wife, have caused the land embraced in the annexed plat to be surveyed, laid out and platted, to be known as CROOKED LAKE PLAT, Part of the NE 1/4 Section 13, T5N R6E, Michigan Meridian, Fenton Twp. Genesee County, Michigan, and that the Road as shown on said plat is hereby dedicated to the use of the public.

Witnesses

B. W. Grall
B. W. Grall
Wm. H. Coleman
Wm. H. Coleman

William G. Hovey
William G. Hovey
Edna E. Hovey
Edna E. Hovey
Edward W. Gute
Edward W. Gute
Marion Gute
Marion Gute

ACKNOWLEDGMENT

STATE OF MICHIGAN)
COUNTY OF GENESEE) ss

On this 3rd day of July, 1953, before me, a Notary Public in and for said county, personally came the above named William G. Hovey and Edna E. Hovey his wife, and Edward W. Gute and Marion Gute his wife, known to me to be the persons who executed the above dedication, and acknowledged the same to be their free act and deed.

B. W. Grall
Notary Public, Genesee Co. Mich.

My Commission expires Jan 10, 1954

DESCRIPTION OF LANDS PLATTED

The land embraced in the annexed plat of CROOKED LAKE PLAT Part of the NE 1/4 Section 13, T5N R6E, Michigan Meridian, Fenton Twp. Genesee County, Michigan is described as follows: Beginning at the interior 1/4 corner of Section 13, T5N R6E, thence N 0° 14' E along N&S 1/4 line of said Section 545.15 feet, thence N 55° 01' E 202.0 feet, thence N 15° 01' W 150 feet, thence N 52° 51' E 200 feet, thence N 7° 16' E 270 feet, thence N 65° 29' W 352.0 feet, thence S 86° 56' E 314.2 feet, thence S 32° 13' W 403.5 feet, thence S 37° 20' W 402.6 feet, thence S 52° 15' E 269.5 feet, thence S 3° 47' W 225.0 feet, thence S 42° 44' E 150 feet, thence S 7° 26' E 150.0 feet, to E&W 1/4 line said Section thence N 88° 56' W 675.0 feet along said line to the place of beginning.

APPROVAL BY BOARD OF COUNTY ROAD COMMISSIONERS

This plat has been examined and approved on the 25th day of July, 1953 by the Genesee County Board of Road Commissioners.

I. M. Vernon Chairman

C. M. Bullard Member

A. H. Borgh Member

COPY

Register's Office

County, ss

Plat of Crooked Lake Plat

Fenton Twp.

was Recorded this 14 day of

August, 1953 at 5:10 O'clock

A. H. Borgh, Clerk

on Page 45

Marion Gute

APPROVAL BY COUNTY PLAT BOARD

This plat was approved on the _____ day of _____ 19____ by the _____ County Plat Board

Carl M. Smith
Carl M. Smith (County Register of Deeds)
George G. Dunn
George G. Dunn (County Clerk)
James J. Hartley
James J. Hartley (County Treasurer)
W. S. O'Brien
W. S. O'Brien (County Drain Commissioner)

COUNTY TREASURER'S CERTIFICATE

Office of County Treasurer, _____ County.
I hereby certify that there are no tax liens or titles held by the State on the lands described hereon, and that there are no tax liens or titles held by individuals on said lands, for the five years preceding the _____ day of _____ 19____ and that the taxes for said period of five years are all paid, as shown by the records of this office.

This certificate does not apply to taxes, if any, now in process of collection by township, city or village collecting officers.

James J. Hartley
County Treasurer

MUNICIPAL APPROVAL

This plat was approved by the _____ of the _____ of _____ at a meeting held _____

John J. [Signature]
(Clerk)

SURVEYOR'S CERTIFICATE

I hereby certify that the plat hereon delineated is a correct one, and that permanent monuments consisting of iron rods at least one half inch in diameter and 48 inches in length, encased in concrete cylinders four inches in diameter and 48 inches in length, have been set at points marked thus (O) as thereon shown at all angles in the boundaries of the land platted, at all intersections of streets and at intersections of streets with the boundaries of the plat.

Robert J. Mitchell
Registered Land Surveyor
No. 11111 1936

I hereby certify that this copy is a true copy of the map or plat forwarded the Register of Deeds for recording.

Date August 13, 1953

Filed in _____

Date August 17, 1953

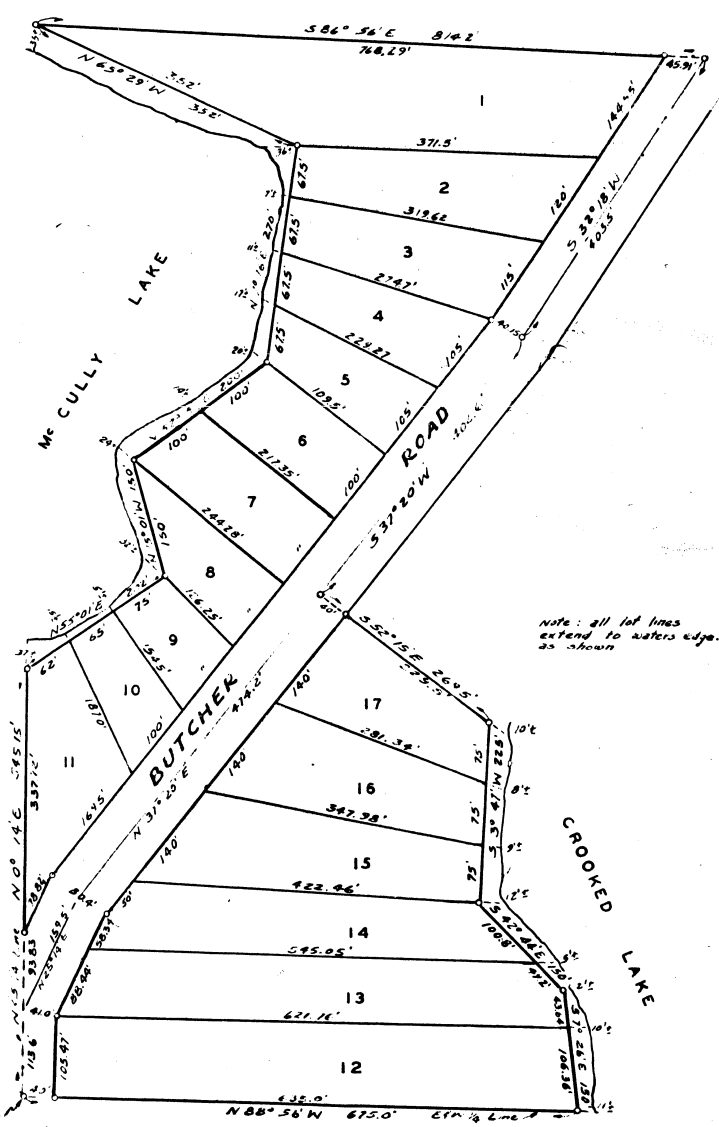
Examined and approved

Date August 12, 1953

[Signature]

[Signature]

PLAT ENGINEER



PLACE OF BEG.
11-10-1919 1/4 LOT
SEC 13, T5N R6E

MITCHELL ENGINEERING CO. FLINT, MICHIGAN

34116