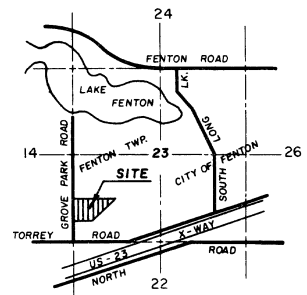
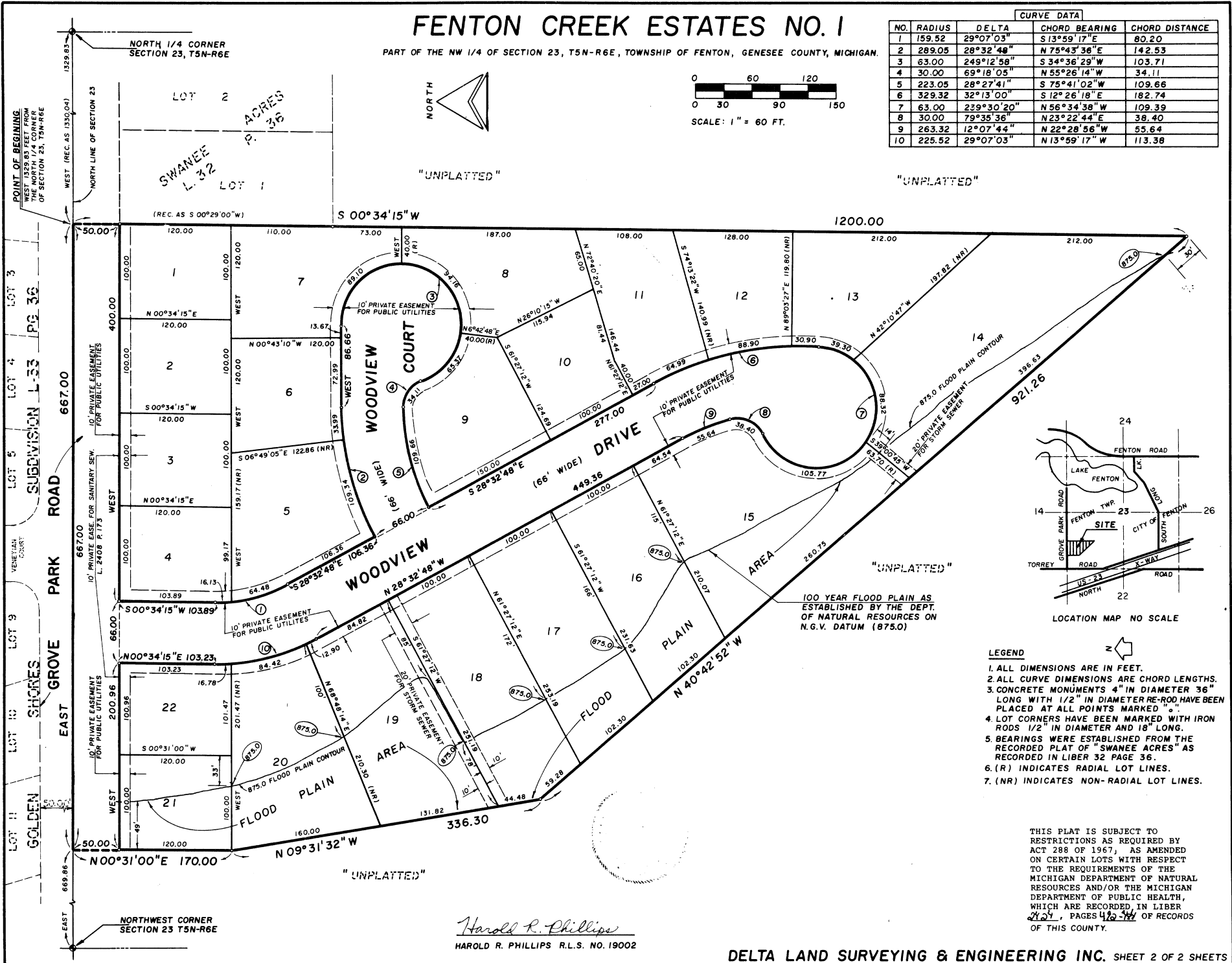
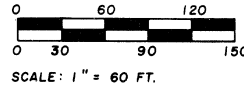


FENTON CREEK ESTATES NO. 1

PART OF THE NW 1/4 OF SECTION 23, T5N-R6E, TOWNSHIP OF FENTON, GENESEE COUNTY, MICHIGAN.

CURVE DATA

NO.	RADIUS	DELTA	CHORD BEARING	CHORD DISTANCE
1	159.52	29°07'03"	S 13°59'17" E	80.20
2	289.05	28°32'48"	N 75°43'36" E	142.53
3	63.00	249°12'58"	S 34°36'29" W	103.71
4	30.00	69°18'05"	N 55°26'14" W	34.11
5	223.05	28°27'41"	S 75°41'02" W	109.66
6	329.32	32°13'00"	S 12°26'18" E	182.74
7	63.00	239°30'20"	N 56°34'38" W	109.39
8	30.00	79°35'36"	N 23°22'44" E	38.40
9	263.32	12°07'44"	N 22°28'56" W	55.64
10	225.52	29°07'03"	N 13°59'17" W	113.38



- LEGEND**
1. ALL DIMENSIONS ARE IN FEET.
 2. ALL CURVE DIMENSIONS ARE CHORD LENGTHS.
 3. CONCRETE MONUMENTS 4" IN DIAMETER 36" LONG WITH 1/2" IN DIAMETER RE-ROD HAVE BEEN PLACED AT ALL POINTS MARKED "C".
 4. LOT CORNERS HAVE BEEN MARKED WITH IRON RODS 1/2" IN DIAMETER AND 18" LONG.
 5. BEARINGS WERE ESTABLISHED FROM THE RECORDED PLAT OF "SWANEE ACRES" AS RECORDED IN LIBER 32 PAGE 36.
 6. (R) INDICATES RADIAL LOT LINES.
 7. (NR) INDICATES NON-RADIAL LOT LINES.

THIS PLAT IS SUBJECT TO RESTRICTIONS AS REQUIRED BY ACT 288 OF 1967, AS AMENDED ON CERTAIN LOTS WITH RESPECT TO THE REQUIREMENTS OF THE MICHIGAN DEPARTMENT OF NATURAL RESOURCES AND/OR THE MICHIGAN DEPARTMENT OF PUBLIC HEALTH, WHICH ARE RECORDED IN LIBER 2454, PAGES 412-414 OF RECORDS OF THIS COUNTY.

Harold R. Phillips
 HAROLD R. PHILLIPS R.L.S. NO. 19002

061350

FENTON CREEK ESTATES NO. 1

PART OF THE NW 1/4 OF SECTION 23, T5N-R6E, TOWNSHIP OF FENTON, GENESEE COUNTY, MICHIGAN

SURVEYOR'S CERTIFICATE

I, Harold R. Phillips, Surveyor, certify:

That I have surveyed, divided, and mapped the land shown on this plat described as follows:

FENTON CREEK NO. 1

Part of the Northwest 1/4 of Section 23, T5N-R6E, Township of Fenton, Genesee County, Michigan, described as: Beginning West along the North line of Section 23 a distance of 1329.83 feet (recorded as 1330.04 feet) from the North 1/4 corner of Section 23, said point also being the Northwest corner of SWANEE ACRES, as recorded in Book 32 of Plats on page 36, Genesee County Records; thence S 00°34'15" W (recorded as S 00°29'00" W) along the West line of SWANEE ACRES, and said West line extended 1200.00 feet; thence N 40°42'52" W 921.26 feet; thence N 09°31'32" W 336.30 feet; thence N 00°31'00" E 170.00 feet to the North line of Section 23; thence East along the North line of Section 23 and the South line of GOLDEN SHORES SUBDIVISION as recorded in Book 33 of Plats on Page 36, Genesee County Records, 667.00 feet to the point of beginning, containing 22 numbered Lots. This Plat contains 12.33 gross acres of land.

That I have made such survey, land-division and plat by the direction of the owners of such land.

That such plat is a correct representation of all the exterior boundaries of land surveyed and the subdivision of it.

That the required monuments and lot markers have been located in the ground or that surety has been deposited with the municipality, as required by Section 125 of the act.

That the accuracy of survey is within the limits required by Section 126 of the act.

That the bearings shown on the plat are expressed as required by Section 126 (3) of the act and as explained in the legend.

DELTA LAND SURVEYING
& ENGINEERING, INC.
120 West First Street
Flint, Michigan 48502

12-13-90
Date

Harold R. Phillips
Harold R. Phillips,
Treasurer
R.L.S. No 19002

CERTIFIED TRUE COPY OF
RECORDED PLAT
BY DEPARTMENT OF COMMERCE

Richard E. Lomax, L.S.
Richard E. Lomax, L.S.
Manager, Plat Section

June 10, 1991

PROPRIETOR'S CERTIFICATE

Tom Atwell Homes & Realty, Inc., a corporation duly organized and existing under the laws of the State of Michigan by Thomas G. Atwell, President, as proprietor, has caused the land to be surveyed, divided, mapped and dedicated as represented on this plat and that the Roads are for the use of the public; that the public utility easements are private easements and that all other easements are for the uses shown on the plat.

Witnesses:

William E. Hamilton
WILLIAM E. HAMILTON

Tom Atwell Homes
& Realty, Inc.
14111 Torrey Road
Fenton, Michigan
48430

Frederick G. Shaltz, Jr.
FREDERICK G. SHALTZ, JR.

Thomas G. Atwell
Thomas G. Atwell,
President

ACKNOWLEDGEMENT

State of Michigan) SS
Genesee County)

Personally came before me this 14th day of December, 1990, Thomas G. Atwell, President, of the above named corporation, to me known to be the person who executed the foregoing instrument, and to me known to be such President of said corporation, and acknowledged that he executed the foregoing instrument as such officer as the fee act and deed of said corporation, by its authority.

Notary Public *Gail Stanke*
GAIL STANKE
Genesee County, Michigan

My Commission Expires 6-7-1992

COUNTY TREASURER'S CERTIFICATE

The records in my office show no unpaid taxes or special assessments for the last five (5) years preceding November 17, 1990 involving the lands included in this plat.

William P. Barkey, Jr.
William P. Barkey, Jr.
County Treasurer
Genesee County, Michigan

COUNTY DRAIN COMMISSIONER'S CERTIFICATE

Approved on FEBRUARY 01, 1991, as complying with Section 192 of Act 288, P.A. 1967, and the applicable rules and regulations published by my office in the County of Genesee.

Anthony Ragnone
Anthony Ragnone
Drain Commissioner

CERTIFICATE OF COUNTY ROAD COMMISSIONERS

Approved on February 19, 1991, as complying with Section 183 of Act 288, P.A. 1967, and the applicable published rules and regulations of the Board of Road Commissioners of Genesee County.

Preston E. Schmidt
Preston E. Schmidt
Vice Chairman

Edward W. Morey
Edward W. Morey
Member

John W. Hunter
John W. Hunter
Chairman

CERTIFICATE OF MUNICIPAL APPROVAL

I certify that this plat was approved by the Township Board of the Charter Township of Fenton, at a meeting held MARCH 4, 1991, was reviewed and found to be in compliance with Act 288, P.A. 1967. Public sanitary sewer services have been installed and are ready for connection. Genesee County Health Department approval on 1-26-90 for Preliminary Plat.

Charles A. Mueller
Charles Mueller, Clerk

COUNTY PLAT BOARD CERTIFICATE

This plat has been reviewed and is approved by the Genesee County Plat Board on Mar. 7, 1991, as being in compliance with all of the provisions of Act 288, P.A. 1967, and the Plat Board's applicable rules and regulations.

Melvin McCree
Melvin McCree
Register of Deeds

John H. Trecha
John H. Trecha,
County Clerk

William P. Barkey, Jr.
William P. Barkey, Jr.
County Treasurer

RECORDING CERTIFICATE

State of Michigan)
Genesee County)

This plat was received for record on 25 day of April, 1991 at 8:56 Am., and recorded in Liber 46 of Plats on Pages 1, 2.

Melvin McCree
Melvin McCree
Register of Deeds

061350

61350

NOTICE OF RESOLUTION

At a meeting of The Board of County Road Commissioners of the County of Genesee, Michigan, held at 211 West Oakley Street, Flint, Michigan, on the 29th day of November, 1991, at which time a quorum of the members was present, the following resolution was unanimously adopted by vote taken by yeas and nays and entered at large upon the records of said Board.

RESOLUTION

WHEREAS, the Statutes of the State of Michigan require all roads and streets eligible to become a part of the County Road System to be formally accepted by resolution of said Board; and,

WHEREAS, the Michigan Department of Transportation by virtue of Act 51 of the Public Acts of 1951, requires proof of the acceptance of all roads subsequent to April 1, 1951, by the said Board; and,

NOW, THEREFORE, BE IT RESOLVED, by The Board of County Road Commissioners of the County of Genesee, Michigan, That the following roads be and are adopted into the Local Road System for the County of Genesee and thereby become eligible for funds from the Gas and Weight Tax of the State of Michigan, as specified in Act 51 of the Public Acts of 1951, as amended and supplemented.

FENTON TOWNSHIP:
All of WOODVIEW COURT being 344.20 feet or 0.07 mile, more or less, in length;
All of WOODVIEW DRIVE being 956.39 feet or 0.18 mile, more or less, in length; as dedicated for public use in the plat of Fenton Creek Estates No. 1, as recorded in Liber 66, pages 1 and 2, being a part of Section 23, TSN-R6E, Fenton Township, Genesee County, Michigan, constituting 0.25 mile, more or less, of County Local Roads.

BE IT FURTHER RESOLVED, That a notice of this determination be published in The Flint-Genesee County Legal News, a newspaper of general circulation, once each week for three consecutive weeks; that certified copies of this resolution be served on the Michigan Department of Transportation, the Plat Division of the Department of Commerce of the State of Michigan, and the Clerk of the Township of Fenton; and that said resolution be recorded in the office of the Register of Deeds for the County of Genesee, Michigan.

x x x x x x x x

I hereby certify that the above is a true copy of a part of the minutes of a meeting held on the 29th day of November, 1991, by The Board of County Road Commissioners of the County of Genesee, Michigan.

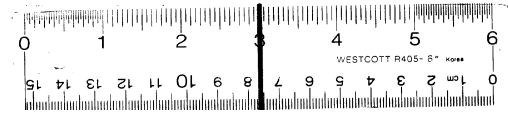
By: Arita R. Megee
Arita R. Megee
Deputy Clerk of the Board

Prepared by
Genesee County Road Commission
211 W. Oakley Street
Flint, MI 48503

RECORDED
INDEXED
DEC 18 9 08 AM '91
GENESEE COUNTY
REGISTER OF DEEDS
FLINT MICHIGAN

GENESEE COUNTY ROAD COMMISSION
211 W. Oakley St.
FLINT, MI 48503-3995

54815



16 X