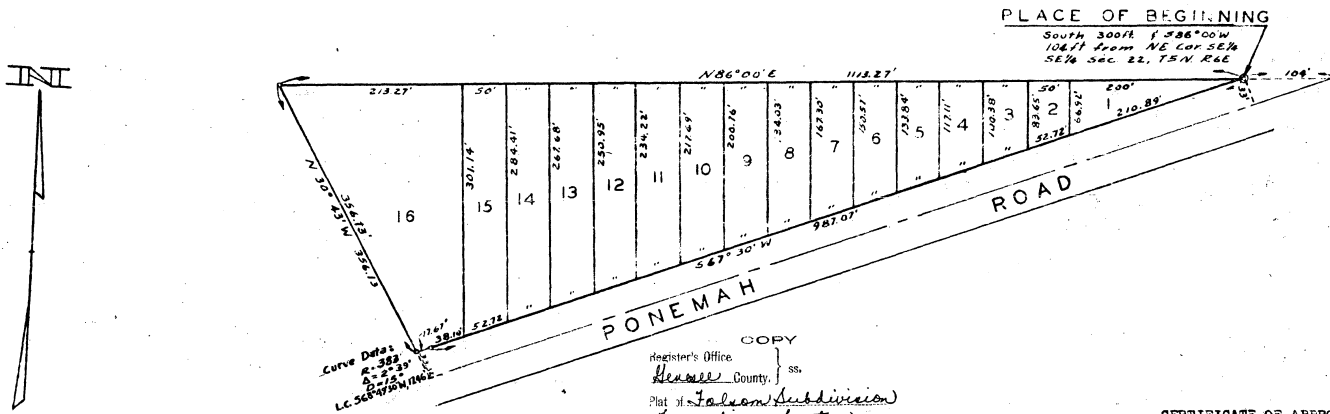


# FOLSOM SUBDIVISION

PART OF SE $\frac{1}{4}$  OF SE $\frac{1}{4}$  SECTION 22, T.5N., R.6E.,  
MICHIGAN MERIDIAN, TOWNSHIP OF FENTON  
GENESEE COUNTY, MICHIGAN

Scale: 1 inch = 100 Feet

ALL DIMENSIONS ARE IN FEET AND DECIMALS THEREOF



### DEDICATION

KNOW ALL MEN BY THESE PRESENTS, That we Howard Folsom as proprietor, and Clara Folsom his wife, have caused the land embraced in the annexed plat to be surveyed laid out and platted, to be known as Folsom Subdivision Part of SE $\frac{1}{4}$  SE $\frac{1}{4}$  Section 22, T5N R6E, Michigan Meridian Township of Fenton, Genesee County, Michigan

Witnesses:

Robert L. Mitchell  
Robert L. Mitchell  
Oliver W. Kime Jr.  
Oliver W. Kime Jr.

Howard Folsom  
Howard Folsom  
Clara Folsom  
Clara Folsom

### ACKNOWLEDGEMENT

STATE OF MICHIGAN) ss  
County of Genesee)

On this 23rd day of June, 1952 before me, a Notary Public in and for said county, personally came the above named Howard Folsom and Clara Folsom his wife known to me to be the persons who executed the above dedication, and acknowledged the same to be their free act and deed.

Oliver W. Kime Jr.  
Oliver W. Kime Jr.  
Notary Public Genesee Co. Mich.

My Commission expires March 27, 1956.

### CERTIFICATE OF APPROVAL BY BOARD OF COUNTY ROAD COMMISSIONERS

This plat has been examined and was approved on the 29th day of July, 1952 by the Genesee County Board of Road Commissioners.

Ivan M. Vernon-Commissioner C. M. Bullard-Commissioner A. Harold Bergh-Comm.

### CERTIFICATE OF MUNICIPAL APPROVAL

This plat was approved by the Township Board of the Township of Fenton at a meeting held July 12, 1952

G. C. Lutz  
G. C. Lutz-Township Clerk

COPY  
Register's Office  
Genesee County, ss  
Plat of Folsom Subdivision  
Township of Fenton  
was Recorded this 11th day of  
August, A.D., 1952 at 17 O'clock  
A.M. in Liber 23 of Plats  
on Page 64  
Mayne Jewell Purdy  
Deputy Auditor General

Examined and Approved

Mayne Jewell Purdy  
Deputy Auditor General  
Mayne Jewell Purdy

FILED IN AUDITOR GENERAL'S DEPT.

August 18, 1952  
Mayne Jewell Purdy  
DEPUTY AUDITOR GENERAL  
Mayne Jewell Purdy

Long chord bearing and distance: S68°49'30"W, 1146ft.

I HEREBY CERTIFY THAT THIS COPY IS  
A TRUE COPY OF THE MAP OR PLAT  
FORWARDED THE REGISTER OF DEEDS  
FOR RECORDING.

COMPARED August 7, 1952  
Mayne Jewell Purdy  
DEPUTY AUDITOR GENERAL  
Mayne Jewell Purdy

### CERTIFICATE OF APPROVAL BY COUNTY BOARD

This plat was approved on the 11th day of August, 1952 by the Genesee County Plat Board.

Earl M. Smith  
Earl M. Smith-Reg. of Deeds  
James P. Barkley  
James P. Barkley-Treasurer

George W. Dunn  
George W. Dunn-County Clerk  
B. E. O'Brien  
B. E. O'Brien-Dein Commissioner

### COUNTY TREASURER'S CERTIFICATE RELATING TO TAXES

Office of County Treasurer, Genesee County.

I hereby certify, That there are no tax liens or titles held by the State on the lands described hereon, and that there are no tax liens or titles held by individuals on said lands, for the five years preceding the 11th day of August, 1952 and that the taxes for said period of five years are paid, as shown by the records of this office.

This certificate does not apply to taxes, if any, now in process of collection by township, city or village collecting officers.

James P. Barkley  
James P. Barkley-Treasurer

### DESCRIPTION OF LAND PLATTED

The land embraced in the annexed plat of FOLSOM SUBDIVISION Part of SE $\frac{1}{4}$  of SE $\frac{1}{4}$  Section 22, T5N R6E, Michigan Meridian, Township of Fenton, Genesee County, Michigan is described as follows: Beginning at a point which is South 300 feet and S 86° 00' W 104 feet from the NE corner of SE $\frac{1}{4}$  SE $\frac{1}{4}$  Section 22, T5N R6E, thence S 67° 30' W 987.07 feet, thence on a curve to the right, radius 382 feet, a distance of 17.67 feet, thence N 30° 43' W 356.13 feet, thence N 86° 00' E 1113.27 feet to the place of beginning.

### SURVEYOR'S CERTIFICATE

I hereby certify that the plat hereon delineated is a correct one and that permanent metal monuments consisting of bars not less than one-half inch in diameter and 48 inches in length, encased in a concrete cylinder at least 4 inches in diameter and 48 inches in depth have been placed at points marked thus (o) as thereon shown at all angles in the boundaries of the land platted, at all the intersections of roads, and at the intersections of roads with the boundaries of the plat as shown on said plat.

Robert L. Mitchell  
Robert L. Mitchell-Registered Surveyor 6936

33224