

GOLDEN SHORES NO. 6

PART OF GOVERNMENT LOTS 2 AND 5 SECTION 14,
T5N-R6E, TOWNSHIP OF FENTON, GENESSEE COUNTY
MICHIGAN.



CERTIFIED TRUE COPY OF
RECORDED PLAT

Loren E. Monroe

LOREN E. MONROE
STATE TREASURER

By *Richard E. Loman*
Richard E. Loman, Plat Examiner

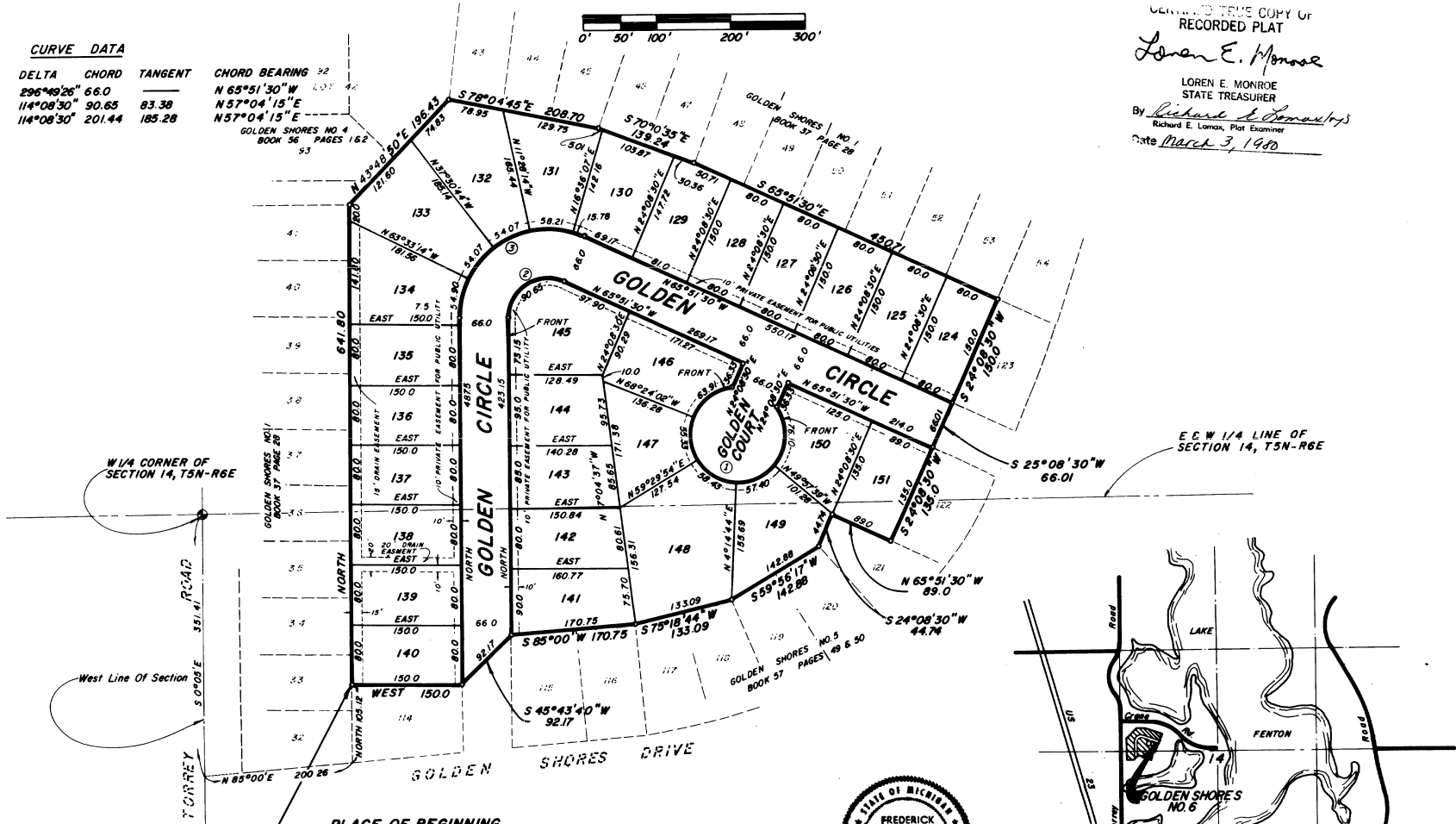
Date *March 3, 1980*

CURVE DATA					
NO.	RADIUS	DELTA	CHORD	TANGENT	CHORD BEARING
1.	63.0	296°49'26"	66.0		N 65°51'30" W
2.	54.0	114°08'30"	90.65	83.38	N 57°04'15" E
3.	120.0	114°08'30"	201.44	185.28	N 57°04'15" E

GOLDEN SHORES NO. 4
BOOK 56 PAGES 162

GOLDEN SHORES NO. 1
BOOK 37 PAGE 26

GOLDEN SHORES NO. 5
BOOK 57 PAGES 48 & 50



W 1/4 CORNER OF SECTION 14, T5N-R6E

E E W 1/4 LINE OF SECTION 14, T5N-R6E

West Line of Section

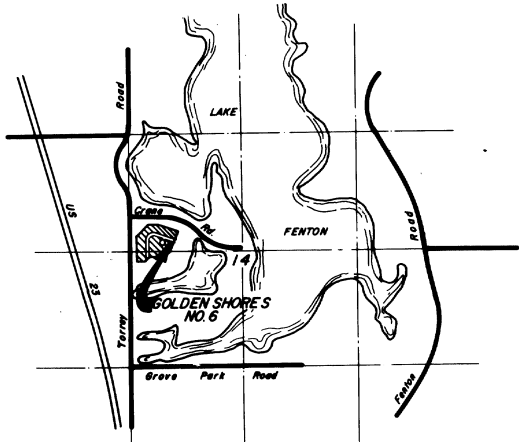
PLACE OF BEGINNING

S 0°05' E 351.41 FEET AND
N 85°00' E 200.26 FEET AND
NORTH 105.12 FEET FROM THE
W 1/4 CORNER OF SECTION 14,
T5N-R6E.

- LEGEND**
- All Dimensions Are In Feet.
 - All Curve Dimensions Are Chords.
 - Concrete Monuments Have Been Set At All Points Marked Thus "o".
 - Lot Corners Have Been Marked With Iron Rods 1/2 Inch In Diameter And 18 Inches Long.
 - Bearings Were Established From The Recorded Plat Of "GOLDEN SHORES NO. 1" As Recorded In Book 37 On Page 28, Genessee County Records.



Frederick J. Shaltz, Jr.
FREDERICK J. SHALTZ, JR.



LOCATION MAP

No Scale



GOLDEN SHORES NO. 6

PART OF GOVERNMENT LOTS 2 AND 5 SECTION 14,
T5N-R6E, TOWNSHIP OF FENTON, GENESEE COUNTY,
MICHIGAN.

SURVEYOR'S CERTIFICATE

I, Frederick J. Shaltz, Jr., Surveyor, Certify:

That I have surveyed, divided and mapped the land shown on this Plat, described as follows:

GOLDEN SHORES NO. 6, part of Government Lots 2 and 5, Section 14, T5N-R6E, Township of Fenton, Genesee County, Michigan, U.S.A., described as follows: Beginning at a point on the East line of the recorded Plat of GOLDEN SHORES NO. 1, recorded in book 37 of Plats, on page 28, Genesee County Records, that is S 0°05' E 351.41 feet and N 85°00' E 200.26 feet and North 105.12 feet from the W 1/4 corner of said Section 14; thence North along the East line of GOLDEN SHORES NO. 1, a distance of 641.80 feet to the SE corner of Lot 42, of GOLDEN SHORES NO. 1; thence N 43°48'50" E along the Easterly line of said Lot 42, a distance of 196.43 feet to the SW corner of Lot 43, of GOLDEN SHORES NO. 1; thence S 78°04'45" E along the Southerly line of GOLDEN SHORES NO. 1, a distance of 208.70 feet; thence continuing along said Southerly line S 70°10'35" E 139.24 feet and S 65°51'30" E 450.71 feet to the NW corner of Lot 123 of the recorded Plat of GOLDEN SHORES NO. 5 recorded in book 57 of Plats, on pages 49 and 50, Genesee County Records; thence along the Westerly and Northerly lines of GOLDEN SHORES NO. 5, S 2°08'30" W 150 feet to the SW corner of Lot 123 of GOLDEN SHORES NO. 5; thence S 25°08'30" W 66.01 feet to the NW corner of Lot 122, of GOLDEN SHORES NO. 5, and S 24°08'30" W 135.00 feet to the SW corner of Lot 122, of GOLDEN SHORES NO. 5, and N 65°51'30" W 89.0 feet to the NW corner of Lot 121, of GOLDEN SHORES NO. 5, and S 24°08'30" W 44.74 feet to the SW corner of Lot 121, of GOLDEN SHORES NO. 5, and S 59°56'17" W 142.88 feet to the NW corner of Lot 119, of GOLDEN SHORES NO. 5, and S 75°18'44" W 133.09 feet to the NW corner of Lot 117, of GOLDEN SHORES NO. 5, and S 85°00' W 170.75 feet to the NW corner of Lot 115, of GOLDEN SHORES NO. 5, and S 45°43'40" W 92.17 feet to the NE corner of Lot 114, of GOLDEN SHORES NO. 5, and West 150 feet to the point of beginning, containing 28 numbered Lots (numbered 124 to 151) and 10.96 acres of land.

PROPRIETOR'S CERTIFICATE

Blaine Realty, Inc., a corporation duly organized and existing under the laws of the State of Michigan by Ward E. Blaine, President, and Janet E. Blaine, Vice President, as proprietors, have caused the land to be surveyed, divided, mapped and dedicated as represented on the Plat and that the Drive, Circle and Roads are for the use of the public; that the public utility easements are private easements and that all other easements are for the uses shown on the Plat.

WITNESS:

BLAINE REALTY, INC.
8347 Davison Road
Davison, MI 48423

Barbara A. Scigliano
BARBARA A. SCIGLIANO

Ward E. Blaine
WARD E. BLAINE, PRESIDENT

John L. Parks
JOHN L. PARKS

Janet E. Blaine
JANET E. BLAINE, VICE PRESIDENT

ACKNOWLEDGMENT
State of Michigan)
Genesee County) SS

PROPRIETOR'S CERTIFICATE

Letts Homes, Inc., a corporation duly organized and existing under the laws of the State of Michigan by Arthur D. Letts, President and Karen G. LaBranche, Secretary as Proprietor, has caused the land to be surveyed, divided, mapped and dedicated as represented on this Plat and that the Drive, Circle, and Roads are for the use of the public, that the public utility easements are private easements and that all other easements are for the uses shown on the Plat.

WITNESS:

LETTS HOMES, INC.
1167 Risecliffe
Grand Blanc, MI 48439

Jane E. Helms
JANE E. HELMS

Arthur D. Letts
ARTHUR D. LETTS, PRESIDENT

Barbara A. Scigliano
BARBARA A. SCIGLIANO

Karen G. LaBranche
KAREN G. LABRANCHE, SECRETARY

ACKNOWLEDGMENT
State of Michigan)
Genesee County) SS

That I have made such survey, land-division and Plat by the direction of the owners of such land.

That such Plat is a correct representation of all the exterior boundaries of the land surveyed and the subdivision of it.

That the required monuments and Lot markers have been located in the ground or that surety has been deposited with the municipality, as required by Section 125, of the Act.

That the accuracy of survey is within the limits required by Section 126 of the Act.

That the bearings shown on the Plat are expressed as required by Section 126 (3) of the Act and as explained in the Legend.

DATE: NOVEMBER 1, 1979



DELTA LAND SURVEYING
& ENGINEERING, INC.
120 W. First Street
Flint, MI 48502

Frederick J. Shaltz, Jr.
FREDERICK J. SHALTZ, JR.
R.L.S. 13595
President

COUNTY TREASURER'S CERTIFICATE

The records in my office show up no unpaid taxes or special assessments for the five years preceding November 13, 1979 involving the lands included in this Plat.

William P. Barkey, Jr.
WILLIAM P. BARKEY, JR.
TREASURER, GENESEE COUNTY

COUNTY DRAIN COMMISSIONER'S CERTIFICATE

Approved on November 28, 1979 as complying with Section 192 of Act 288, P.A. 1967, and the applicable rules and regulations published in my office in the County of Genesee.

Anthony Ragone
ANTHONY RAGONE
Drain Commissioner

Personally came before me this 6th day of November, 1979, Ward E. Blaine, President, and Janet E. Blaine, Vice President, of the above named corporation, to me known to be the persons who executed the foregoing instrument and to me known to be such President and Vice President of said corporation and acknowledged that they executed the foregoing instrument as such officers as the free act and deed of said corporation, by its authority.

Barbara A. Scigliano
BARBARA A. SCIGLIANO, NOTARY PUBLIC
Genesee County, Michigan

My Commission Expires:

April 28, 1981

Personally came before me this 2nd day of November, 1979, Arthur D. Letts, President and Karen G. LaBranche, Secretary of the above named corporation, to me known to be the persons who executed the foregoing instrument, and to me known to be such President and Secretary of said corporation, and acknowledged that they executed the foregoing instrument as such officers as the free act and deed of said corporation by its authority.

Jane E. Helms
JANE E. HELMS, NOTARY PUBLIC
Genesee County, Michigan

My Commission Expires:

March 9, 1983

CERTIFICATE OF COUNTY ROAD COMMISSIONER'S

Approved on December 6, 1979 as complying with Section 183 of Act 299 P.A., 1967, and the applicable published rules and regulations of the Board of Road Commissioner's of Genesee County.

RAYMOND M. NEWMAN
Chairman

John P. Hastings
JOHN P. HASTINGS
Vice Chairman

Preston E. Schmidt
PRESTON E. SCHMIDT
Member

CERTIFICATE OF MUNICIPAL APPROVAL

I certify that this Plat was approved by the Township Board of the Township of Fenton, at a meeting held JANUARY 7, 1980, and was reviewed and found to be in compliance with Act 288, P.A., 1967. The Genesee County Health Department approved this Plat on April 3, 1979, and that public sanitary sewer services have been installed and ready for connection.

Warren W. Miskch
WARREN W. MISKCH
Fenton Township Clerk

COUNTY PLAT BOARD CERTIFICATE

This Plat has been reviewed and is approved by the Genesee County Plat Board on January 16, 1980 as being in compliance with all of the provisions of Act 288 P.A., 1967, and the Plat Board's applicable rules and regulations.

William P. Barkey, Jr.
WILLIAM P. BARKEY, JR.
County Treasurer

Floyd J. McCreë
FLOYD J. MCCREE
Register of Deeds

MICHAEL J. CARR
County Clerk

RECORDING CERTIFICATE

This Plat was received for record on the 27th day of February, 1980 A.D., at 5:15 P.M., recorded in Liber 59 of Plats, on page 7077

Floyd J. McCreë
FLOYD J. MCCREE
Register of Deeds

DELTA LAND SURVEYING & ENGINEERING

SHEET 1 OF 2

77
57190
HEETS