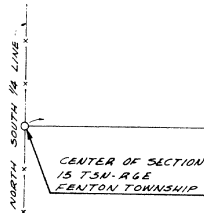
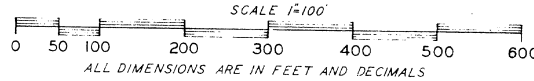


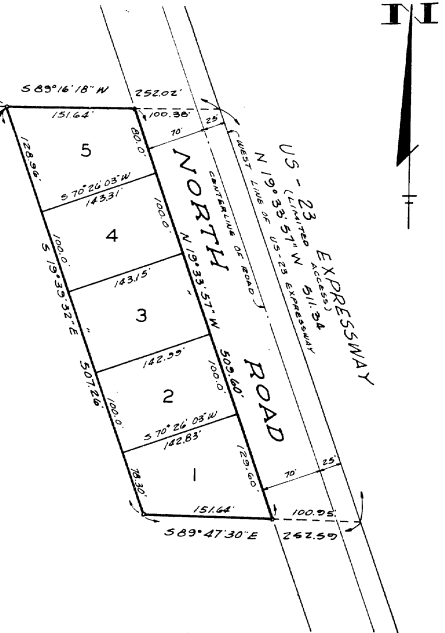
# HORRELL ACRES

PART OF THE SE 1/4 OF SECTION 15 T5N-R6E  
FENTON TOWNSHIP, GENESEE COUNTY, MICHIGAN



POINT OF BEGINNING  
N 89° 16' 18" E 1059.11'  
EAST WEST 1/4 LINE

POINT OF BEGINNING  
N 89° 16' 18" E 1059.11'  
FROM THE CENTER OF  
SECTION 15 T5N-R6E  
FENTON TOWNSHIP



### DEDICATION

KNOW ALL MEN BY THESE PRESENTS, that we, A. Crane Horrell and Dorothy Horrell, his wife, as proprietors, have caused the land embraced in the annexed plat to be surveyed, laid out and platted, to be known as "HORRELL ACRES," part of the SE 1/4 of Section 15, T5N-R6E, Fenton Township, Genesee County, Michigan, and that the road as shown on said plat is HEREBY DEDICATED TO THE USE OF THE PUBLIC.

Witnesses:

Betty P. Tankersley  
BETTY P. TANKERSLEY

A. Crane Horrell & S.  
A. Crane Horrell  
3217 Rolston Road  
Fenton, Michigan

Ellen J. Dainty  
ELLEN J. DAINTY

Dorothy Horrell & S.  
Dorothy Horrell  
3217 Rolston Road  
Fenton, Michigan

### CERTIFICATE OF APPROVAL BY COUNTY PLAT BOARD

This plat was approved on the 4th day of April, 1966, by the Genesee County Plat Board.

Earl M. Smith  
Earl M. Smith, Register of Deeds  
Anthony Ragnone  
Anthony Ragnone, Drain Commissioner

James P. Barkey  
James P. Barkey, County Treasurer  
George C. Dunn  
George C. Dunn, County Clerk

### COUNTY TREASURER'S CERTIFICATE RELATING TO TAXES

Office of the County Treasurer, Genesee County, Michigan:

I hereby certify that there are no tax liens or titles held by the State on the lands described hereon, and that there are no tax liens or titles held by individuals on said lands for the five years preceding the 4th day of April, 1966, and that the taxes for said period of five years are paid as shown by the records of this office. This certificate does not apply to taxes, if any, now in process of collection by township, city or village collection officers.

James P. Barkey  
James P. Barkey, County Treasurer

### DESCRIPTION

The land embraced in the annexed plat of "HORRELL ACRES," part of the SE 1/4 of Section 15, T5N-R6E, Fenton Township, Genesee County, Michigan, is described as follows: Beginning at a point on the East-West 1/4 line of said Section 15, that is N 89° 16' 18" E, 1059.11 feet from the center of said section; thence S 19° 39' 32" E, 507.26 feet; thence S 89° 47' 30" E, 252.02 feet; thence N 19° 33' 57" W, 511.34 feet; thence S 89° 16' 18" W, 252.02 feet to the point of beginning.

### SURVEYOR'S CERTIFICATE

I hereby certify that the plat hereon delineated is a correct one and that the permanent monuments consisting of iron bars at least one-half inch in diameter and 36 inches in length, encased in concrete cylinders 4 inches in diameter and 26 inches in length have been set at points marked thus (O) as thereon shown at all angles in the boundaries of the land platted, at all angles in the streets and at all intersections of the lines of streets with the boundaries of the plat.

Prepared and Drafted by:

Carl H. Carlson  
Carl H. Carlson  
2320 Lippincott Blvd. Flint, Michigan  
Registered Land Surveyor and  
Registered Civil Engineer # 9189

CERTIFYING FEE PAID 3.00  
James P. Barkey  
GENESEE COUNTY TREASURER

COPY  
Register's Office  
Genesee County, S.S.  
Plat of Horrell Acres

was Received this 10th day of May, A. D. 1966 at Flint  
P. M. in Lib. 43 at Plat  
on Page 40

I hereby certify that this is a true and correct copy of map as filed in the Register of Deeds for Genesee County, Michigan, on May 4, 1966.  
The Map is Correct.  
The Map is Correct.  
L. R. LANG, CLERK  
A. J. GREEN, REGISTER OF DEEDS  
By Richard Toland  
REGISTER OF DEEDS

### CERTIFICATE OF MUNICIPAL APPROVAL

This plat was approved at a meeting held on the 24 day of November, 1965, by the Fenton Township Board and is in compliance with Section 19a and the width of lots conforms with requirements of Section 30, Act 172 of 1929, as amended.

A. Crane Horrell  
Crane Horrell, Township Clerk

### CERTIFICATE OF APPROVAL BY BOARD OF COUNTY ROAD COMMISSIONERS

This plat has been examined and was approved on the 8th day of February, 1966, by the Genesee County Board of Road Commissioners.

C. M. Bullard  
C. M. Bullard, Comm.  
George Slaght  
George Slaght, Comm.  
L. R. Lang  
L. R. Lang, Comm.

48362