

MEDICATION

KNOW ALL MEN BY THESE PRESENTS, THAT WE, A. CRANE HORRELL AND DOROTHY HORRELL, HIS WIFE, AS PROPRIETORS, HAVE CAUSED THE LAND ENBRACED IN THE ANNEXED PLAT TO BE SURVEYED, Laid OUT AND PLATTED, TO BE KNOWN AS "HORRELL GARDENS", PART OF THE N 1/2 SW 1/4 SEC. 15 T5N-R6E, FENTON TOWNSHIP, GENESEE COUNTY, MICHIGAN, AND THAT THE ROADS SHOWN ON SAID PLAT ARE HEREBY DEDICATED TO THE USE OF THE PUBLIC.

WITNESSES: John C. Mackie, John C. Mackie, John C. Mackie, A. Crane Horrell, Bernard A. Henderson, Dorothy Horrell, Bernard A. Henderson, Dorothy Horrell

STATE OF MICHIGAN) COUNTY OF GENESEE)

ON THIS 18th day of June, 1956, before me, a Notary Public in and for said County, personally appeared the above named A. CRANE HORRELL AND DOROTHY HORRELL, HIS WIFE, KNOWN TO BE THE PERSONS WHO EXECUTED THE ABOVE OBLIGATION, AND WHO ACKNOWLEDGED THE SAME TO BE THEIR FREE ACT AND DEED.

MY COMMISSION EXPIRES NOVEMBER 30, 1958

John C. Mackie, JOHN C. MACKIE, NOTARY PUBLIC, GENESEE COUNTY

DESCRIPTION OF LAND PLATTED

THE LAND ENBRACED IN THE ANNEXED PLAT OF "HORRELL GARDENS", PART OF THE N 1/2 SW 1/4 SEC. 15 T5N-R6E FENTON TOWNSHIP, GENESEE COUNTY, MICHIGAN, IS DESCRIBED AS FOLLOWS: BEGINNING AT A POINT THAT IS S 89° 38' E 631.43' FROM THE 1/4 COR. SEC. 15 T5N-R6E, THENCE S 0° 10' E 878.22 FEET, THENCE N 66° 55' E 652.61 FEET, THENCE N 31° 05' W 255.10 FEET, THENCE S 66° 55' W 289.14 FEET, THENCE N 0° 10' W 603.15 FEET, THENCE N 89° 52' W 350.0 FEET TO THE PLACE OF BEGINNING. THIS PLAT CONTAINS TWELVE LOTS.

CERTIFICATE OF MUNICIPAL APPROVAL

THIS PLAT WAS APPROVED BY THE TOWNSHIP BOARD OF THE TOWNSHIP OF FENTON, AT A MEETING HELD ON THE 27th DAY OF July, 1956.

G. C. Lutz, TOWNSHIP CLERK

CERTIFICATE OF APPROVAL BY BOARD OF COUNTY ROAD COMMISSIONERS

THIS PLAT HAS BEEN EXAMINED AND WAS APPROVED ON THE 27th DAY OF Aug, 1956 BY THE GENESEE COUNTY BOARD OF ROAD COMMISSIONERS.

C. W. Bullard, Commissioner, Harold Bergh, Commissioner, Robert W. Stoddard, Commissioner

CERTIFICATE OF APPROVAL BY COUNTY BOARD

THIS PLAT WAS APPROVED ON THE ___ DAY OF ___ 1956.

Earl M. Smith, Earl M. Smith-Register of Deeds, James P. Barkey, James P. Barkey-County Treasurer, George G. Dunn, George G. Dunn-County Clerk, B. E. O'Brien, B. E. O'Brien-Drain Commissioner

COUNTY TREASURER'S CERTIFICATE RELATING TO TAXES

OFFICE OF THE COUNTY TREASURER, GENESEE COUNTY, MICHIGAN. HEREBY CERTIFY THAT THERE ARE NO TAX LIENS OR TITLES HELD BY THE STATE ON THE LANDS DESCRIBED HEREON, AND THAT THERE ARE NO TAX LIENS OR TITLES HELD BY INDIVIDUALS ON SAID LANDS FOR THE FIVE YEARS PRECEDING THE ___ DAY OF ___ 1956, AND THAT THE TAXES FOR SAID PERIOD OF FIVE YEARS ARE PAID AS SHOWN BY THE RECORDS OF THIS OFFICE. THIS CERTIFICATE DOES NOT APPLY TO TAXES, IF ANY, NOW IN PROCESS OF COLLECTION BY TOWNSHIP, CITY, OR VILLAGE COLLECTION OFFICERS.

James P. Barkey, COUNTY TREASURER

SURVEYOR'S CERTIFICATE

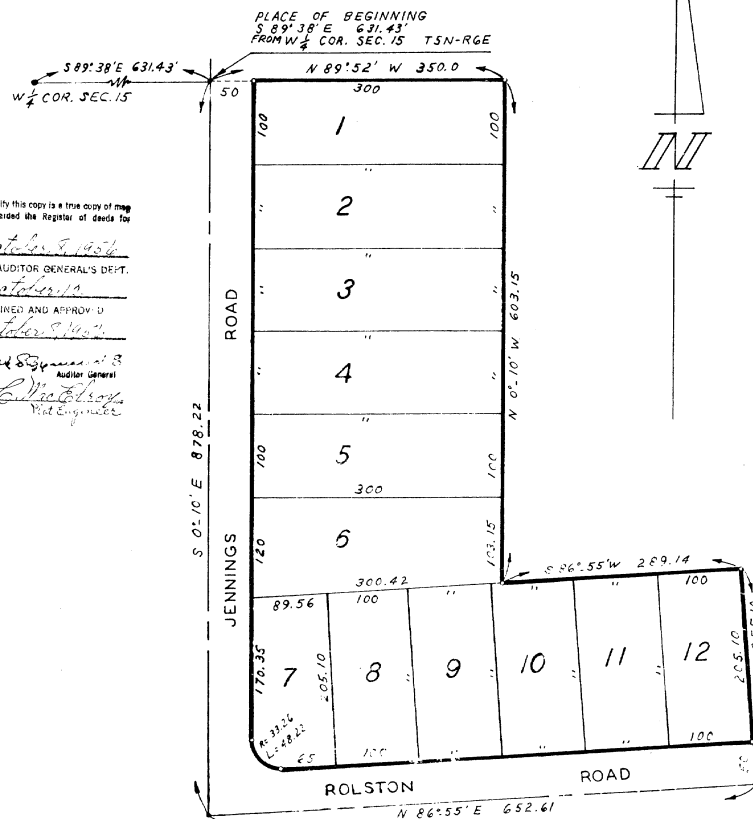
I HEREBY CERTIFY THAT THE PLAT HEREON DELINEATED IS A CORRECT ONE, AND THAT PERMANENT METAL MONUMENTS CONSISTING OF BARS ONE-HALF INCH IN DIAMETER AND 36 INCHES IN LENGTH, ENCASED IN A CONCRETE CYLINDER 4 INCHES IN DIAMETER AND 36 INCHES IN DEPTH HAVE BEEN PLACED AT ALL POINTS MARKED THUS "M" AS THEREON SHOWN AT ALL ANGLES IN THE PLAT BOUNDARIES, AT THE INTERSECTION OF STREETS, AND AT THE INTERSECTION OF STREETS WITH THE BOUNDARIES OF THE PLAT AS SHOWN ON SAID PLAT.

John C. Mackie, JOHN C. MACKIE, R.L.S. 47434

HORRELL GARDENS

PART OF THE N 1/2 SW 1/4 SEC. 15 T5N-R6E FENTON TOWNSHIP GENESEE COUNTY, MICHIGAN SCALE 1" = 100'

ALL DIMENSIONS ARE IN FEET AND DECIMALS THEREOF



I hereby certify this copy is a true copy of map or plat... REGISTERED IN THE REGISTER OF DEEDS FOR RECORDING. Date October 9, 1956. FILED IN AUDITOR GENERAL'S DEPT. Date October 9, 1956. EXAMINED AND APPROVED. Date October 9, 1956. Frank S. ... Auditor General. By D. C. ... Notary Public.

COPY Register's Office County, ... Plat of ... was Recorded this 11th day of ... A.D., 1956 at ... M. in Lib. ... of Deeds ... Page ...

38487