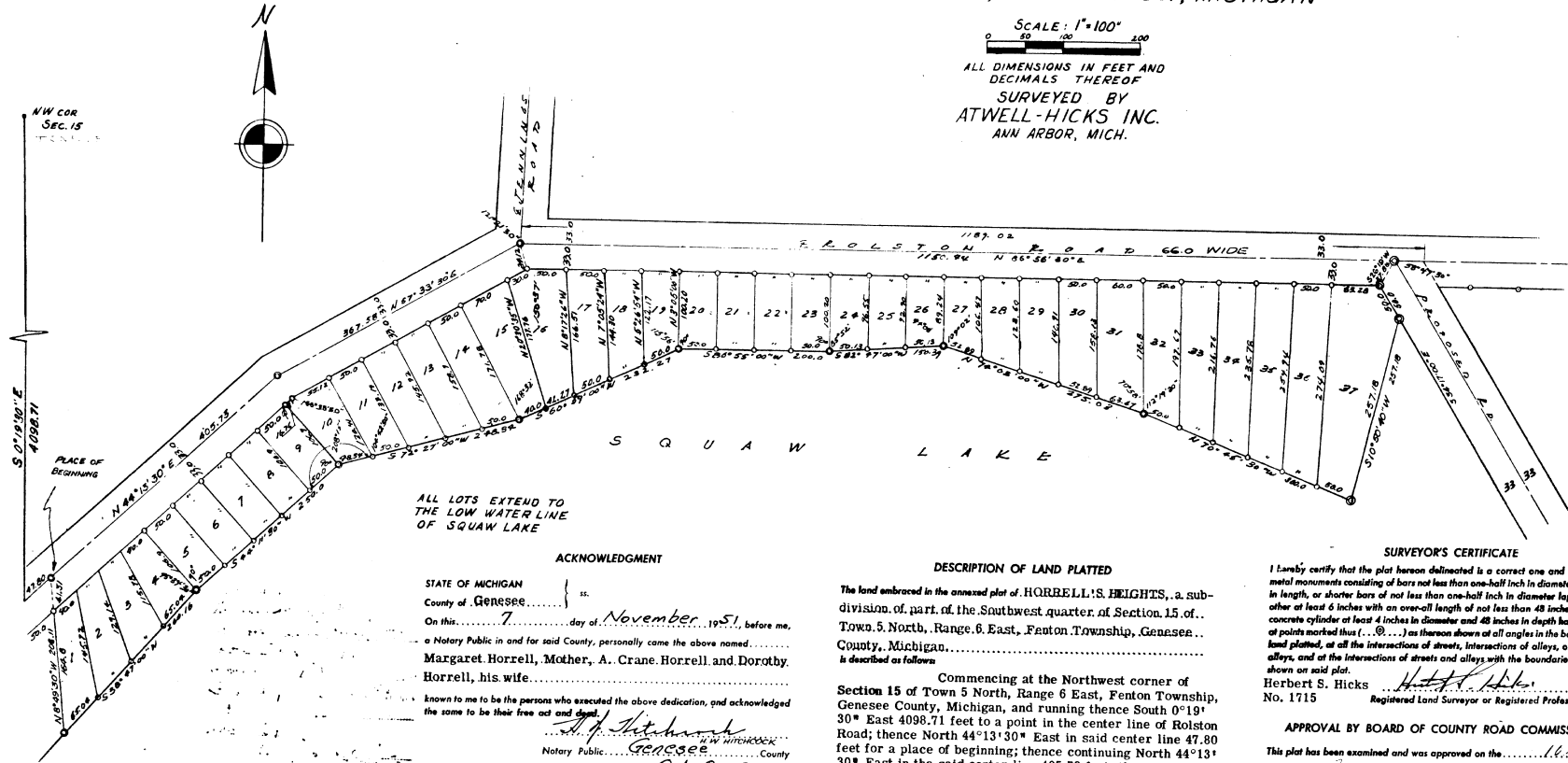


13

HORRELL'S HEIGHTS

A SUBDIVISION OF PART OF THE S.W. 1/4
SEC. 15, T. 5 N., R. 6 E
FENTON TWP., GENESEE CO., MICHIGAN

SCALE: 1"=100'
0 50 100 150 200
ALL DIMENSIONS IN FEET AND DECIMALS THEREOF
SURVEYED BY
ATWELL-HICKS INC.
ANN ARBOR, MICH.



ALL LOTS EXTEND TO THE LOW WATER LINE OF SQUAW LAKE

ACKNOWLEDGMENT

STATE OF MICHIGAN } ss.
County of GENESEE }
On this 7 day of November, 1951, before me,
a Notary Public in and for said County, personally came the above named
Margaret Horrell, Mother, A. Crane Horrell and Dorothy
Horrell, his wife.
known to me to be the persons who executed the above dedication, and acknowledged
the same to be their free act and deed.
H. H. Hitchcock
Notary Public, Genesee County
My Commission expires, Oct 8, 1952

DESCRIPTION OF LAND PLATTED

The land embraced in the annexed plat of HORRELL'S HEIGHTS, a subdivision of part of the Southwest quarter of Section 15 of...
Town 5 North, Range 6 East, Fenton Township, Genesee
County, Michigan...

Commencing at the Northwest corner of
Section 15 of Town 5 North, Range 6 East, Fenton Township,
Genesee County, Michigan, and running thence South 0°19'
30" East 4098.71 feet to a point in the center line of Rolston
Road; thence North 44°13'30" East in said center line 47.80
feet for a place of beginning; thence continuing North 44°13'
30" East in the said center line 405.73 feet; thence North
59°33'30" East 367.58 feet to the intersection of said
center line with the center line of Jennings Road; thence
North 86°56'30" East in the center line of Rolston Road
1150.44 feet; thence South 26°19'00" West 37.88 feet;
thence South 34°17'00" East 50.00 feet; thence South 10°50'
40" West 257.18 feet to the North shore of Squaw Lake;
thence North 70°45'30" West along said shore line 300.00
feet; thence North 74°03'00" West along said shore line
275.03 feet; thence South 82°47'00" West along said shore
line 150.39 feet; thence South 86°55'00" West along said
shore line 200.00 feet; thence South 60°59'00" West along
said shore line 232.27 feet; thence South 72°27'00" West
along said shore line 248.34 feet; thence South 44°11'30"
West along said shore line 250.00 feet; thence South 38°47'00"
West along said shore line 260.16 feet; thence North 8°
49'30" West 206.11 feet to the place of beginning.

SURVEYOR'S CERTIFICATE

I hereby certify that the plat hereon delineated is a correct one and that permanent
metal monuments consisting of bars not less than one-half inch in diameter and 48 inches
in length, or shorter bars of not less than one-half inch in diameter topped over each
other at least 6 inches with an over-all length of not less than 48 inches, successed in a
concrete cylinder of at least 4 inches in diameter and 48 inches in depth have been placed
at points marked thus (.....) as thereon shown at all angles in the boundaries of the
land platted, and at the intersections of streets, intersections of alleys, or of streets and
alleys, as shown on said plat.
Herbert S. Hicks
No. 1715
Registered Land Surveyor or Registered Professional Engineer

APPROVAL BY BOARD OF COUNTY ROAD COMMISSIONERS

This plat has been examined and was approved on the 16th day of January, 1952 by the County Board of Road Commissioners.

A. H. Berrich (Chairman)
C. M. Bullard (Member)
Evan M. Vernon (Member)

COUNTY TREASURER'S CERTIFICATE

Office of County Treasurer, Genesee County.
I hereby certify, that there are no tax liens or titles held by the State on the lands described hereon, and that there are no tax liens or titles held by individuals on said lands, for the five years preceding the 19th day of January, 1952, and that the taxes for said period of five years are all paid, as shown by the records of this office.

James P. Barkey (County Treasurer)

MUNICIPAL APPROVAL

This plat was approved by the Board of Trustees of the Township of Fenton, Michigan, at a meeting held on the 19th day of January, 1952.

GUSTAV C. LUTZ (Clerk)

APPROVAL BY BOARD OF COUNTY AUDITORS

Approved by the Board of County Auditors of Genesee County, Michigan, this 19th day of January, 1952.

(Chairman)

APPROVAL BY COUNTY PLAT BOARD

This plat was approved on the 19th day of January, 1952.

Earl M. Smith
EARL M. SMITH - REG. OF DEEDS
James P. Barkey
JAMES P. BARKEY - COUNTY TREASURER
Bernard E. O'Brien
BERNARD E. O'BRIEN - TOWNSHIP COMMISSIONER
George G. Dunn
GEORGE G. DUNN - COUNTY CLERK

DEDICATION

KNOW ALL MEN BY THESE PRESENTS, that we, Margaret Horrell, Mother, A. Crane Horrell and Dorothy Barrell, his wife, as proprietors, have caused the land embraced in the annexed plat to be surveyed, laid out and platted, to be known as HORRELL'S HEIGHTS, a subdivision of part of the Southwest quarter of Section 15 of Town 5 North, Range 6 East, Fenton Township, Genesee County, Michigan.

and that the streets OR ROADS as shown on said plat are hereby dedicated to the use of the public.

Signed and Sealed in the Presence of
Albert H. McClatchey (Notary)
Margaret Horrell (M. S.)
A. Crane Horrell (M. S.)
Dorothy Horrell (M. S.)

Margaret Horrell
A. Crane Horrell
Dorothy Horrell