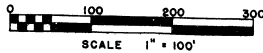


HORRELL'S HI-LANDS

A SUBDIVISION OF PART OF THE WEST ONE HALF OF SECTION FIFTEEN, TOWN 5 NORTH, RANGE 6 EAST, FENTON TOWNSHIP, GENESEE COUNTY, MICHIGAN.



ALL DIMENSIONS IN FEET AND DECIMALS THEREOF. ALL CURVE DIMENSIONS ARE ARC LENGTHS UNLESS OTHERWISE NOTED.

SURVEY BY ATWELL - HICKS, INC.
ANN ARBOR

SHEET 2 OF 2

Note: All lots extend to water's edge of Little Loon Lake.

DEDICATION

KNOW ALL MEN BY THESE PRESENTS, that we, A. Crane Horrell and Dorothy Horrell, his wife, as proprietors, have caused the land embraced in the annexed plat to be surveyed, laid out and platted, to be known as HORRELL'S HI-LANDS, A Subdivision of part of the West half of Section 15, Town 5 North, Range 6 East, Fenton Township, Genesee County, Michigan and that the streets, roads and court as shown on said plat are hereby dedicated to the use of the public.

Signed and Sealed in the Presence of:
D. R. Stiles (Witness) A. Crane Horrell (A.S.)
Edison D. Stiles (Witness) Dorothy Horrell (A.S.)

ACKNOWLEDGMENT

STATE OF MICHIGAN
County of Genesee
On this 19 day of September, 1922, before me, a Notary Public in and for said County, personally came the above named A. Crane Horrell and Dorothy Horrell, his wife, known to me to be the persons who executed the above dedication, and acknowledged the same to be their free act and deed.

Notary Public
My Commission expires 7

MUNICIPAL APPROVAL

This plat was approved by the Fenton Township Board of the Fenton Township of Fenton at a meeting held September 19, 1922
Gus C. Lutz (Clerk)

DESCRIPTION OF LAND PLATTED

The land embraced in the annexed plat of HORRELL'S HI-LANDS, A Subdivision of part of the West half of Section 15, Town 5 North, Range 6 East, Genesee County, Michigan, is described as follows:

Commencing at the Northwest corner of Section 15, Town 5 North, Range 6 East, Fenton Township, Genesee County, Michigan; thence S. 0° 19' 30" East along the West line of said Section 4098.71 feet; thence N. 44° 13' 30" E., 453.53 feet along the center line of Rolston Road; thence N. 57° 33' 30" E., 367.58 feet along the center line of Rolston Road; thence N. 86° 56' 30" E., 1119.46 feet along the center line of Rolston Road for a PLACE OF BEGINNING; thence N. 11° 20' E., 718.02 feet; thence N. 1° 57' 30" W., 553.30 feet; thence in the arc of a 1027.9 feet radius curve concave to the South subtended by a chord which bears South 81° 49' W., 163.43 feet; thence S. 77° 15' 30" W., 228.69 feet; thence in the arc of a 60.0 feet radius curve concave to the Southeast subtended by a chord which bears S. 48° 48' West 57.18 feet; thence in the arc of a 60.0 feet curve concave to the North subtended by a chord which bears N. 79° 59' 30" W., 118.08 feet; thence N. 0° 22' W., 195.76 feet; thence N. 65° 50' E., 200.0 feet; thence N. 82° 28' E., 316.45 feet; thence North 16° 38' E., 328.43 feet; thence S. 26° 47' E., 163.36 feet; thence N. 88° 40' E., 200.0 feet; thence N. 48° 10' E., 250.0 feet; thence N. 23° 48' E., 197.0 feet; thence N. 0° 38' W., 103.0 feet; thence S. 85° 35' E., 183.65 feet; thence S. 0° 26' E., 151.5 feet; thence N. 89° 34' E., 25.0 feet; thence S. 0° 26' E., 128.3 feet; thence in the arc of a 184.23 feet radius curve concave to the Northwest subtended by a chord which bears S. 25° 30' W., 161.14 feet; thence S. 51° 26' W., 506.48 feet; thence in the arc of a 176.21 feet radius curve concave to the North subtended by a chord which bears S. 88° 44' W., 194.58 feet; thence in the arc of a 50.8 feet radius curve concave to the Southeast subtended by a chord which bears S. 58° 02' W., 87.99 feet; thence S. 1° 57' 30" E., 590.72 feet; thence S. 11° 20' W., 709.58 feet; thence S. 86° 56' 30" W., 61.96 feet along the center line of Rolston Road to the place of beginning.

APPROVAL BY COUNTY PLAT BOARD

This plat was approved on the 19 day of September, 1922 by the Geneesee County Plat Board

Earl M. Smith (County Register of Deeds)
George G. Dunn (County Clerk)
James P. Barkey (County Treasurer)
Bernard E. O'Brien (County Drain Commissioner)

SURVEYOR'S CERTIFICATE

I hereby certify that the plat hereon delineated is a correct one and that permanent metal monuments consisting of bars not less than one-half inch in diameter and 48 inches in length, or shorter bars of not less than one-half inch in diameter tapped over each other at least 6 inches with an over-all length of not less than 48 inches, encased in a concrete cylinder at least 4 inches in diameter and 48 inches in depth have been placed at points marked thus (.....) as thereon shown at all angles in the boundaries of the land platted, at all the intersections of streets, intersections of alleys, or of streets and alleys, and at the intersection of streets and alleys with the boundaries of the plat as shown on said plat.

Herbert S. Hicks
Registered Land Surveyor or Registered Professional Engineer
Herbert S. Hicks No. 1715

APPROVAL BY BOARD OF COUNTY ROAD COMMISSIONERS

This plat has been examined and was approved on the 19 day of September, 1922 by the Geneesee County Board of Road Commissioners.

Ivan M. Vernon (Chairman)
A. Harold Bergh (Member)
C. M. Bullard (Member)

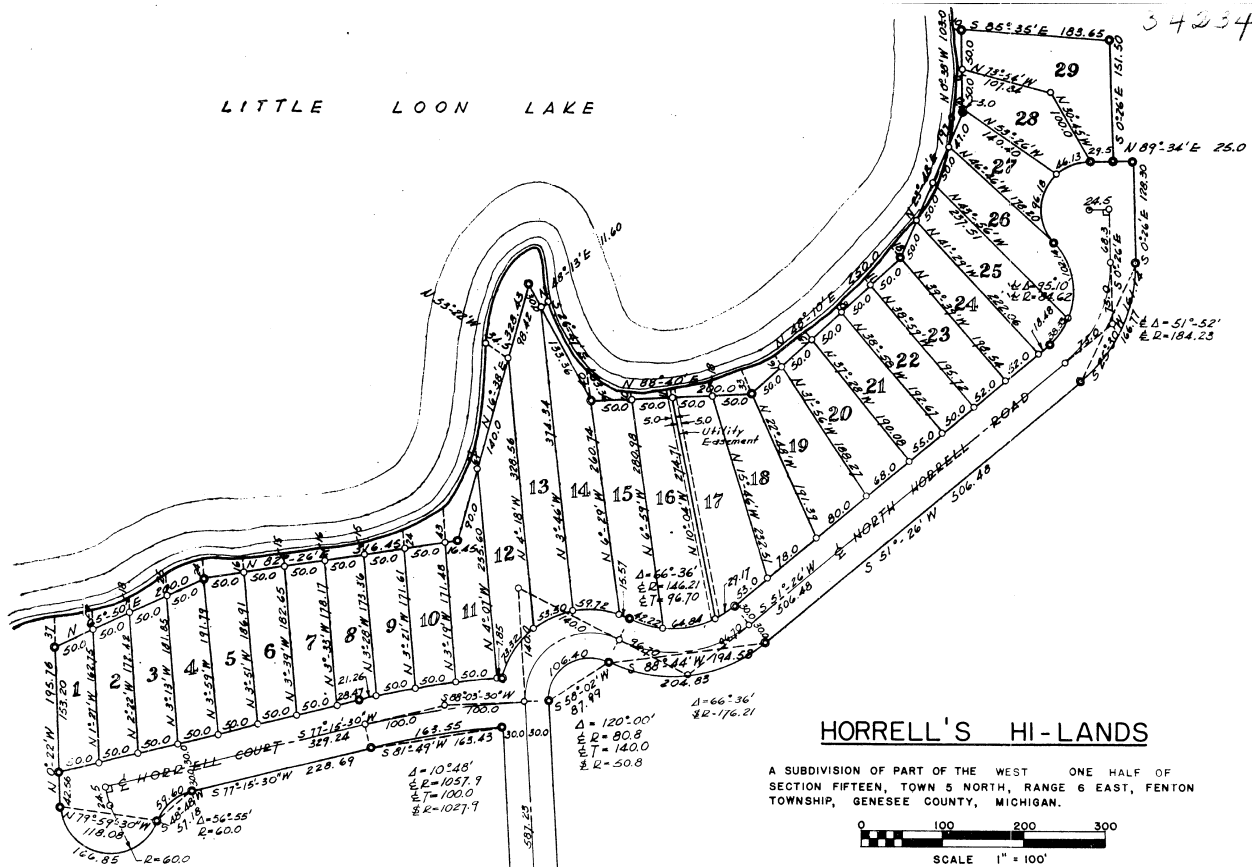
COUNTY TREASURER'S CERTIFICATE

Office of County Treasurer, Genesee County.
I hereby certify, that there are no tax liens or titles held by the State on the lands described hereon, and that there are no tax liens or titles held by individuals on said lands, for the five years preceding the 19 day of September, 1922; and that the taxes for said period of five years are all paid, as shown by the records of this office.

This certificate does not apply to taxes, if any, now in process of collection by township, city or village collecting officers.
James P. Barkey (County Treasurer)

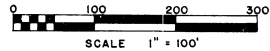
LITTLE LOON LAKE

34234



HORRELL'S HI-LANDS

A SUBDIVISION OF PART OF THE WEST ONE HALF OF SECTION FIFTEEN, TOWN 5 NORTH, RANGE 6 EAST, FENTON TOWNSHIP, GENESEE COUNTY, MICHIGAN.



ALL DIMENSIONS IN FEET AND DECIMALS THEREOF. ALL CURVE DIMENSIONS ARE ARC LENGTHS UNLESS OTHERWISE NOTED.

SURVEY BY ATWELL-HICKS, INC.
ANN ARBOR

Note: All lots extend to water's edge of Little Loon Lake.

NOT PLATTED

NOT PLATTED

