

# HORRELL'S HI-LANDS NO. 1

PART OF THE W 1/2 OF SECTION 15, T5N-26E,  
FENTON TOWNSHIP, GENESEE COUNTY, MICHIGAN.

### DESCRIPTION OF LAND PLATTED

The land embraced in the annexed plat of "HORRELL'S HI-LANDS NO. 1" part of the W 1/2 of Section 15, T5N-26E, Fenton Township, Genesee County, Michigan, is described as follows: Beginning at a point that is 8 0' 19" 30" E, 4098.71 feet and N 44' 13" 30" E, 453.53 feet and N 57' 33" 30" E, 367.58 feet and N 86' 56" 30" E, 1181.42 feet and N 11' 20" E, 709.58 feet from the Northwest Corner of said Section 15; thence N 1' 58" W, 590.72 feet; thence on a curve to the right whose radius is 50.8 feet, arc length is 106.40 feet, and chord bearing and distance are N 58' 02" E, 87.99 feet; thence on a curve to the left whose radius is 176.21 feet, arc length is 204.83 feet, and chord bearing and distance are N 88' 44" E, 194.58 feet; thence N 51' 26" E, 506.48 feet; thence on a curve to the left whose radius is 184.23 feet, arc length is 166.77 feet, and chord bearing and distance are N 25' 30" E, 161.14 feet; thence S 0' 12' 30" W, 346.93 feet; thence S 51' 26" W, 454.12 feet; thence S 65' 22" 11" W, 189.03 feet; thence S 1' 58" E, 400.72 feet; thence N 88' 02" W, 200 feet to the point of beginning. This plat contains twelve numbered lots.

### DEDICATION

KNOW ALL MEN BY THESE PRESENTS, that we A. Crane Horrell and Dorothy Horrell, his wife, as proprietors, have caused the land embraced in the annexed plat to be surveyed, laid out and platted, to be known as "HORRELL'S HI-LANDS NO. 1" part of the W 1/2 of Section 15, T5N-26E, Fenton Township, Genesee County, Michigan, and that the title to the road as shown on said plat has been acquired by the public by reason of prior dedication, and that the drain easement as shown on said plat is not dedicated to the public, but the right to use said easement is hereby reserved for the purpose as shown hereon and no permanent structures are to be erected within the lines of said easement.

### WITNESSES:

Bernard Henderson  
BERNARD HENDERSON  
Harold Elgin  
HAROLD ELGIN

A. Crane Horrell  
A. Crane Horrell  
Dorothy Horrell  
Dorothy Horrell

### ACKNOWLEDGMENT

STATE OF MICHIGAN }  
County of Genesee ) ss

On this 10th day of July, 1962, before me, a notary public, in and for said county, personally appeared the above named A. Crane Horrell and Dorothy Horrell, known to me to be the persons who executed the above dedication and who acknowledged the same to be their free act and deed.

My commission expires July 27, 1965.

Carl H. Carlson  
Carl H. Carlson, Notary Public, Genesee County

### CERTIFICATE OF MUNICIPAL APPROVAL

This plat was approved at a meeting held on the 10th day of July, 1962, by the Fenton Township Board, and is in compliance with Section 19a and the width of lots conforms with requirements of Section 30, Act 172 of 1929, as amended.

Betty I. Warner  
Betty I. Warner Township Clerk

### COUNTY TREASURER'S CERTIFICATE RELATING TO TAXES

Office of the County Treasurer, Genesee County, Michigan  
I hereby certify that there are no tax liens or titles held by the state on the lands described hereon, and that there are no tax liens or titles held by individuals on said lands for the five years preceding the 10th day of July, 1962, and that the taxes for said period of five years are paid as shown by the records of this office. This certificate does not apply to taxes, if any, now in process of collection by township, city, or village collection officers.

### CERTIFICATE OF APPROVAL BY COUNTY PLAT BOARD

This plat was approved on the 2nd day of August, 1962, by the GENESEE COUNTY PLAT BOARD.

Earl W. Smith  
Earl W. Smith Register of Deeds  
B. E. O'Brien  
B. E. O'Brien Drain Commissioner

James P. Barkley  
James P. Barkley County Treasurer  
George G. Dunn  
George G. Dunn County Clerk

### CERTIFICATE OF APPROVAL BY BOARD OF COUNTY ROAD COMMISSIONERS

This plat has been examined and was approved on the 26th day of July, 1962, by the Genesee County Board of Road Commissioners.

C. N. Ballard  
C. N. Ballard Commissioner

A. Harold Bergh  
A. Harold Bergh Commissioner

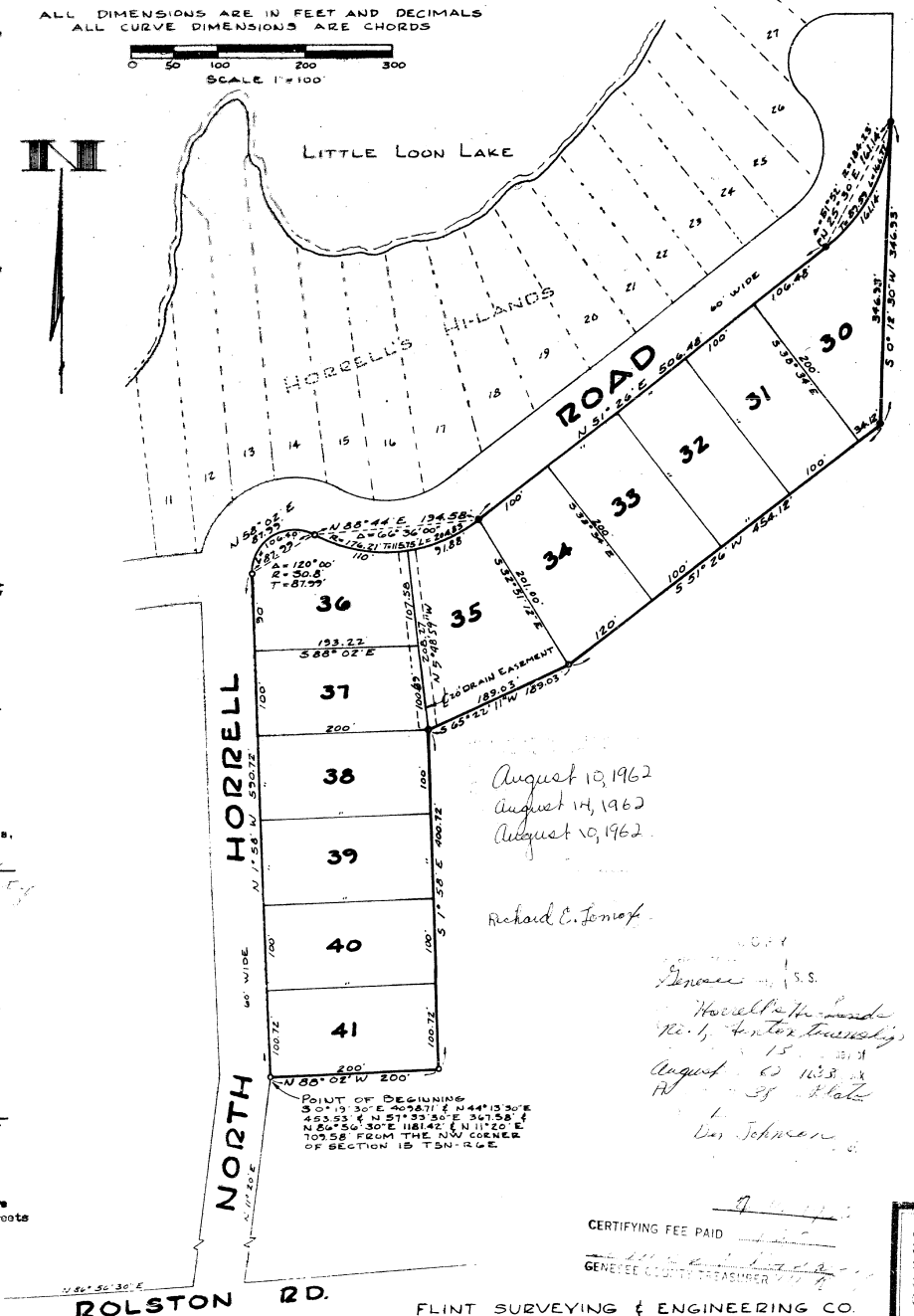
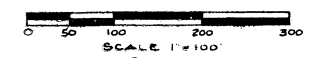
L. R. Leng  
L. R. Leng Commissioner

### SURVEYOR'S CERTIFICATE

I hereby certify that the plat hereon delineated is a correct one and that permanent monuments consisting of iron bars at least one-half inch in diameter and 36 inches in length, encased in concrete cylinders 4 inches in diameter and 36 inches in length have been set at points marked thus (O) as hereon shown at all angles in the boundaries of the land platted, at all angles in the streets and at all interconnections of the lines of streets with the boundaries of the plat.

Carl H. Carlson  
Carl H. Carlson  
Registered Land Surveyor and  
Registered Civil Engineer #9189

ALL DIMENSIONS ARE IN FEET AND DECIMALS  
ALL CURVE DIMENSIONS ARE CHORDS



August 10, 1962  
August 14, 1962  
August 10, 1962  
Richard C. Tomp

Genee Co. S.S.  
Horrell's Hi-Lands  
No. 1, Fenton Township  
August 15, 1962  
August 22, 1962  
H  
State  
Don Johnson

CERTIFYING FEE PAID  
GENESEE COUNTY TREASURER