

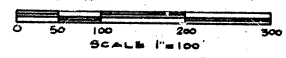
DESCRIPTION OF LAND PLATED

The land embraced in the annexed plat of "HORRELL'S HI-LANDS NO. 2," part of the W 1/2 of Section 15, T5N-R6E, Fenton Township, Genesee County, Michigan, is described as follows: Beginning at a point that is S 0° 19' 30" E, 4098.71 feet and N 44° 13' 30" E, 453.53 feet and N 57° 33' 30" E, 367.58 feet and N 86° 56' 30" E, 1181.42 feet and N 11° 20' E, 0.47 feet from the northwest corner of said Section 15; thence N 87° 00' E, 888.39 feet; thence N 1° 07' W, 250.13 feet; thence S 87° 00' W, 606.58 feet; thence N 10° 40' 40" E, 446.07 feet; thence S 88° 02' W, 200 feet; thence S 11° 20' W, 709.11 feet to the point of beginning. This plat contains 12 numbered lots.

# HORRELLS HI-LANDS NO. 2

PART OF THE W 1/2 OF SECTION 15, T5N-R6E, FENTON TOWNSHIP, GENESSEE COUNTY, MICHIGAN.

ALL DIMENSIONS ARE IN FEET AND DECIMALS



DEDICATION

KNOW ALL MEN BY THESE PRESENTS, that we, A. Crane Horrell and Dorothy Horrell, his wife, as proprietors, have caused the land embraced in the annexed plat to be surveyed, laid out and platted, to be known as "HORRELL'S HI-LANDS NO. 2," part of the W 1/2 of Section 15, T5N-R6E, Fenton Township, Genesee County, Michigan, and that the title to the roads as shown on said plat has been acquired by the public by reason of prior dedication, and that the drain easement as shown on said plat is not dedicated to the public, but the right to use said easement is hereby reserved for the purpose as shown hereon and no permanent structures are to be erected within the lines of said easement.

WITNESSES:

Lois A. Winchester  
LOIS A. WINCHESTER  
Bernard Henderson  
BERNARD HENDERSON

A. Crane Horrell  
A. Crane Horrell, 3158 Rolston Road, Fenton, Mich  
Dorothy Horrell  
Dorothy Horrell, 3158 Rolston Road, Fenton, Mich.

STATE OF MICHIGAN }  
as  
County of Genesee }

On this 27 day of April, 1964, before me, a notary public, in and for said county, personally appeared the above named A. Crane Horrell and Dorothy Horrell, known to me to be the persons who executed the above dedication and who each being duly sworn by me acknowledged the same to be their free act and deed.

My commission expires July 27, 1965

Carl H. Carlson  
Carl H. Carlson, Notary Public, Genesee County

CERTIFICATE OF MUNICIPAL APPROVAL

This plat was approved at a meeting held on the 22 day of April, 1964, by the Fenton Township Board and is in compliance with Section 19a and the width of lots conforms with requirements of Section 30, Act 172, of 1929, as amended.

A. Crane Horrell  
A. Crane Horrell Township Clerk

COUNTY TREASURER'S CERTIFICATE RELATING TO TAXES

Office of the County Treasurer, Genesee County, Michigan:

I hereby certify that there are no tax liens or titles held by the state on the lands described hereon, and that there are no tax liens or titles held by individuals on said lands for the five years preceeding the 17th day of June, 1964, and that the taxes for said period of five years are paid as shown by the records of this office. This certificate does not apply to taxes, if any, now in process of collection by township, city or village collection officers.

James P. Burkey  
James P. Burkey - County Treasurer

CERTIFICATE OF APPROVAL BY COUNTY PLAT BOARD

This plat was approved on the 1st day of June, 1964, by the Genesee County Plat Board.

Earl M. Smith  
Earl M. Smith - Register of Deeds  
Anthony Ragione  
Anthony Ragione - Drain Commissioner

James P. Burkey  
James P. Burkey - County Treasurer  
George G. Dunn  
George G. Dunn - County Clerk

CERTIFICATE OF APPROVAL BY BOARD OF COUNTY ROAD COMMISSIONERS

This plat has been examined and was approved on the 12th day of May, 1964, by the Genesee County Board of Road Commissioners.

C. H. Bullard  
C. H. Bullard - Co. Issuer

A. Harold Bergh  
A. Harold Bergh - Commissioner  
L. R. Lang  
L. R. Lang - Commissioner

SURVEYOR'S CERTIFICATE

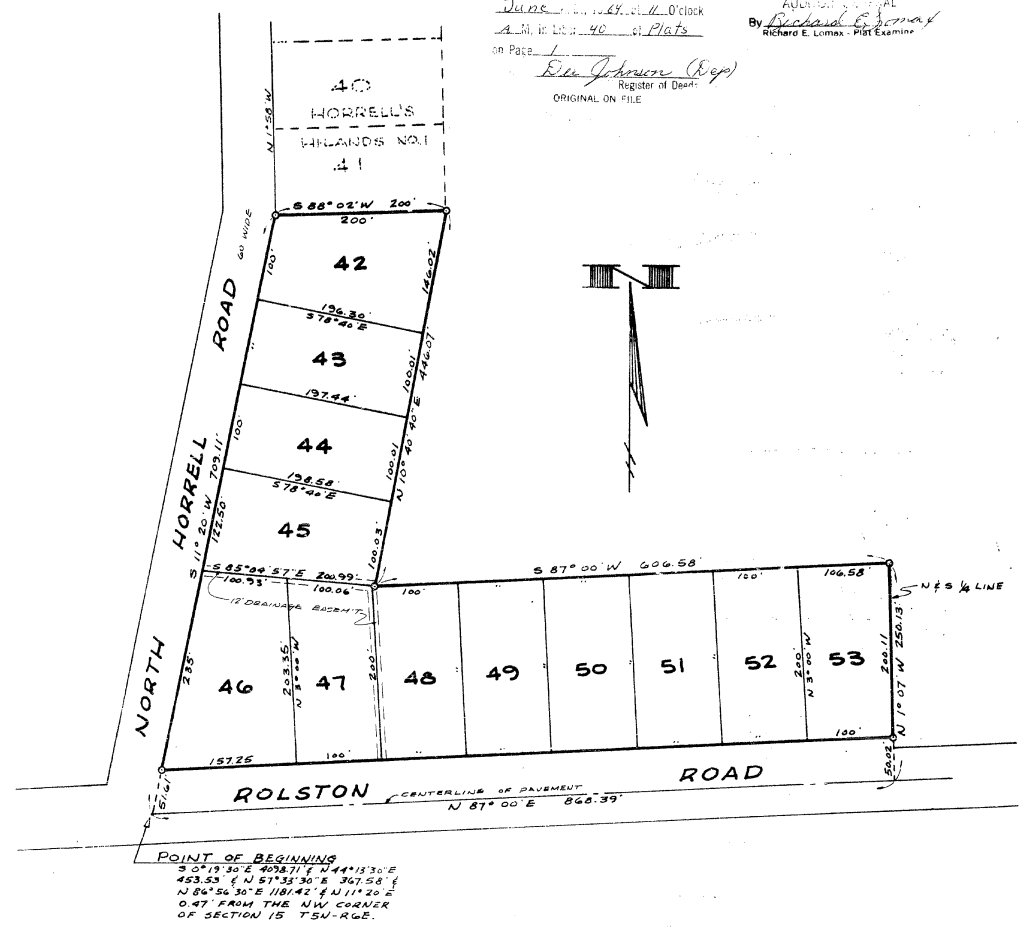
I hereby certify that the plat hereon delineated is a correct one and that permanent monuments consisting of iron bars at least one-half inch in diameter and 36 inches in length, encased in concrete cylinders 4 inches in diameter and 36 inches in length have been set at points marked thus (O) as thereon shown at all angles in the boundaries of the land platted, at all angles in the streets and at all intersections of the lines of streets with the boundaries of the plat.

Carl H. Carlson  
C. H. Carlson  
Lippincott, Flint, Michigan  
Registered Civil Engineer and Land Surveyor # 9189

COPY  
Register's Office  
Genesee County } S. S.  
of Horrells Hi-Land No. 2

was recorded on 16th day of June, 1964, at 11:40 o'clock A.M. in Lib. 40 of Plats  
on Page 4  
Ken Johnson (Dep)  
Register of Deeds  
ORIGINAL ON FILE

I hereby certify this copy is a true copy of the original recorded in the Lib. 40 of Plats on June 12, 1964.  
June 25, 1964.  
June 12, 1964.  
By Richard E. Lomas  
Richard E. Lomas - Plat Examiner



POINT OF BEGINNING  
S 0° 19' 30" E 4098.71' N 44° 13' 30" E  
453.53' N 57° 33' 30" E 367.58' N  
N 86° 56' 30" E 1181.42' N 11° 20' E  
0.47' FROM THE NW CORNER  
OF SECTION 15 T5N-R6E.

16568