

HORRELL'S HI-LANDS NO. 3

PART OF THE W 1/2 OF SECTION 15 T5N-R6E,
FENTON TOWNSHIP, GENESEE COUNTY, MICHIGAN.

ALL DIMENSIONS ARE IN FEET AND DECIMALS

DEDICATION
KNOW ALL MEN BY THESE PRESENTS, that we, A. Crane Horrell and Dorothy Horrell, his wife, as proprietors, have caused the land embraced in the annexed plat to be surveyed, laid out and platted, to be known as "HORRELL'S HI-LANDS NO. 3" part of the W 1/2 of Section 15, T5N-R6E, Fenton Township, Genesee County, Michigan, and that the title to the roads as shown on said plat has been acquired by reason of prior dedication, and that the easements shown on said plat are not dedicated to the public but the right to use said easements is hereby reserved for the purpose as designated hereon and no permanent structures are to be erected within the lines of said easements.

WITNESSES:
A. Crane Horrell
A. Crane Horrell, 3150 Rolston Road
Fenton, Michigan

Douvan J. Allen
Dorothy Horrell
Dorothy Horrell, 3150 Rolston Road
Fenton, Michigan

Ellen J. Dainty
County of Genesee

On this 27th day of January, 1965, before me, a notary public in and for said county personally appeared the above named A. Crane Horrell and Dorothy Horrell, his wife, known to me to be the persons who executed the above dedication and who each being duly sworn by me did acknowledge same to be their free act and deed.

My commission expires May 3, 1965.
Ellen J. Dainty
Notary Public, Genesee County, Michigan

CERTIFICATE OF MUNICIPAL APPROVAL

This plat was approved at a meeting held on the 27 day of January, 1965, by the Fenton Township Board and is in compliance with Section 19a and the width of lots conforms with requirements of Section 30, Act 172, of 1929 as amended.

A. Crane Horrell
A. Crane Horrell, Township Clerk

COUNTY TREASURER'S CERTIFICATE RELATING TO TAXES

Office of the County Treasurer, Genesee County, Michigan:
I hereby certify that there are no tax liens or titles held by the state on the lands described hereon, and that there are no tax liens or titles held by individuals on said lands for the five years preceding the day of January, 1965, and that the taxes for said period of five years are paid as shown by the records of this office. This certificate does not apply to taxes, if any, now in process of collection by township, city or village collection officers.

James F. Barkey
James F. Barkey, County Treasurer

DESCRIPTION OF LAND PLATTED

The land embraced in the annexed plat of "HORRELL'S HI-LANDS NO. 3," part of the W 1/2 of Section 15 T5N-R6E, Fenton Township, Genesee County, Michigan, is described as follows: Beginning at a point that lies S 89° 58' E, 631.43 feet and S 89° 52' E, 350 feet from the W 1/2 corner of said section; thence S 0° 10' E, 602.91 feet; thence N 86° 53' E, 289.14 feet; thence S 3° 05' E, 255.10 feet; thence N 86° 45' 10" E, 466.76 feet; thence N 11° 22' 20" E, 715.74 feet; thence N 1° 55' 40" W, 357.07 feet; thence S 77° 26' 15" W, 563.90 feet; thence S 0° 09' E, 120.92 feet; thence N 89° 53' 30" W, 349.38 feet to the point of beginning. This plat contains 13 numbered lots.

CERTIFICATE OF APPROVAL BY COUNTY PLAT BOARD

This plat was approved on the 14th day of February, 1964, by the Genesee County Plat Board.

Earl M. Smith James F. Barkey, County Treasurer
Earl M. Smith, Registrar of Deeds
Anthony Ragnone George Q. Dunn, County Clerk
Anthony Ragnone, Draft Commissioner

CERTIFICATE OF APPROVAL BY BOARD OF COUNTY ROAD COMMISSIONERS

This plat has been examined and was approved on the 14th day of February, 1965, by the Genesee County Board of Road Commissioners.

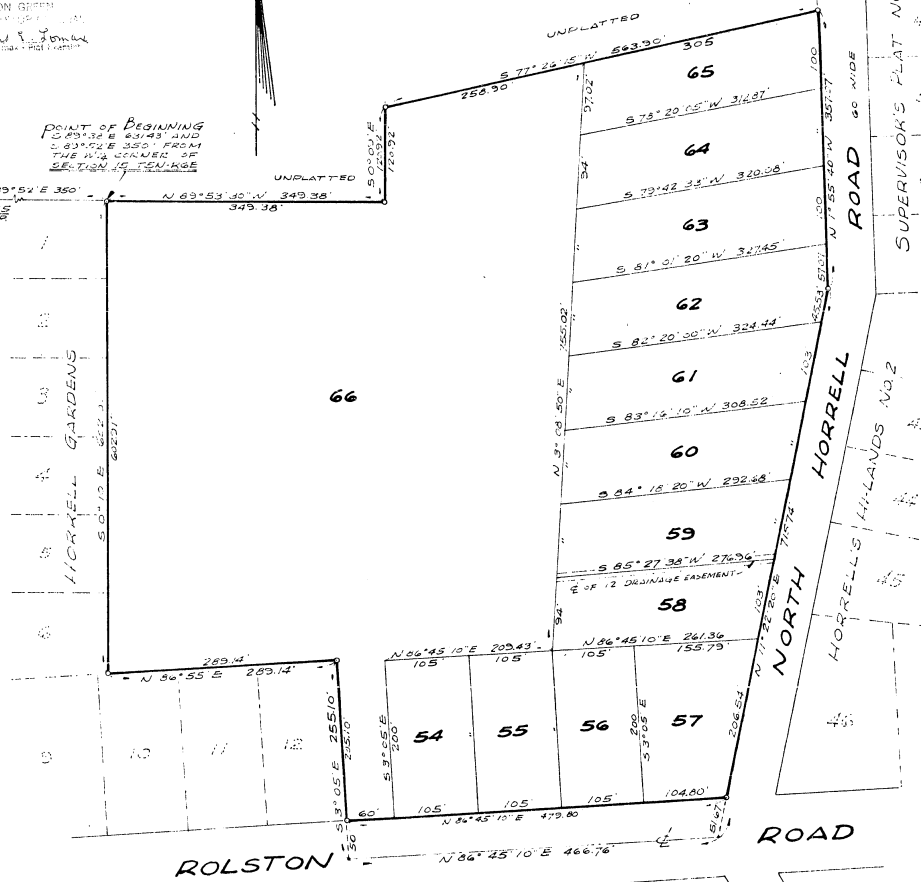
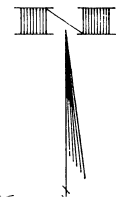
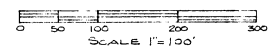
C. H. Bullard George Slaght, Commissioner L. R. Lang, Commissioner
C. H. Bullard, Commissioner

SURVEYOR'S CERTIFICATE

I hereby certify that the plat hereon delineated is a correct one and that permanent monuments consisting of iron bars at least one-half inch in diameter and 36 inches in length, encased in concrete cylinders 4 inches in diameter and 36 inches in length have been set at points marked thus (O) as thereon shown at all angles in the boundaries of the land platted, at all angles in the streets and at all intersections of the lines of streets with the boundaries of the plat

Carl H. Carlson
Carl H. Carlson
2320 Lippincott Blvd., Flint, Michigan
Registered Land Surveyor and
Registered Civil Engineer # 9189

I hereby certify this plat is a true and correct copy of the original as recorded in the Register of Deeds for Genesee County, Michigan, on March 7, 1965.
Date: February 23, 1965
Allison Green
Allison Green
Notary Public, Genesee County, Michigan



Recorder's Office
Genesee County, S.S.
Plat of Horrell's Hi-Lands No. 3
Recorded this 24 day of February, A.D. 1965 at 10 o'clock 32 P.M. in Liber 41 of Plats
on Page 10
Richard J. Jones
Register of Deeds
ORIGINAL ON FILE

47274