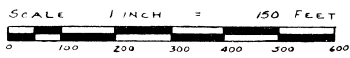


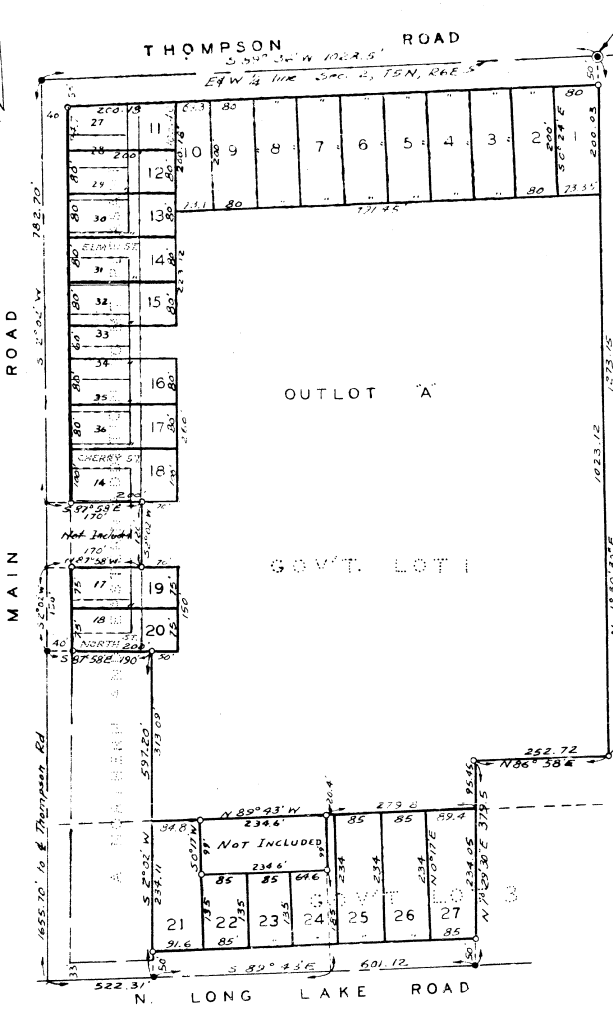
KLEIN'S FENTON LAKE SUBDIVISION

PART OF GOVERNMENT LOTS 1&3, SECTION 2, T5N R6E, MICHIGAN MERIDIAN, FENTON TWP, GENESEE COUNTY, MICHIGAN



ALL DIMENSIONS ARE IN FEET AND DECIMALS THEREOF

THOMPSON ROAD
MAIN ROAD



PLACE OF BEGINNING
S 89° 36' W 477.20' from
INTERIOR 1/4 CORNER
SEC. 2, T5N R6E

DEDICATION

KNOW ALL MEN BY THESE PRESENTS, that we David Klein and Alfred E. Klein, a co-partnership doing business as Klein Realty Co. as proprietors have caused the land embraced in the annexed plat to be surveyed laid out and related to be known as "Klein's Fenton Lake Subdivision", Part of Government Lots 1 and 3, Section 2, T5N R6E, Michigan Meridian, Fenton Twp, Genesee County, Michigan and that the roads as shown on said plat are hereby dedicated to the use of the public

Witnesses:

Albert G. Adams
Robert L. Mitchell

David Klein
Alfred E. Klein
Alfred E. Klein

ACKNOWLEDGMENT

STATE OF MICHIGAN
County of Genesee) ss

On this 13 day of July 1953, before me a Notary Public in and for said county, personally came the above named David Klein and Alfred E. Klein, known to me to be the persons who executed the above dedication, and acknowledged the same to be their free act and deed.

My commission expires July 28, 1956
Albert G. Adams-Notary Public, Genesee Co.

DESCRIPTION OF LANDS PLATTED

The land embraced in the annexed plat of "Klein's Fenton Lake Subdivision", Part of Government Lots 1 and 3, Section 2, T5N, R6E, Michigan Meridian, Fenton Twp., Genesee County, Michigan is described as follows: Beginning at a point 889°36'W, 477.20 feet from the interior 1/4 corner of Section 2, T5N, R6E, thence S89°36'W, 1028.5 feet, thence S 2°02'W, 732.70 feet, thence S87°58'E, 170 feet, thence S 2°02'W, 120 feet, thence S87°58'E, 190 feet, thence S 2°02'W, 597.20 feet, thence S89°43'E, 601.12 feet, thence N 1°29'30"E, 379.5 feet, thence N86°58'E, 252.72 feet, thence N 1°30'30"E, 1273.15 feet to the place of beginning. Excepting therefrom a parcel described as beginning at a point N89°36'W, 1505.7 feet and S 2°02'W, 1655.7 feet and S89°43'E, 522.31 feet and N 0°17'E, 185 feet from the interior 1/4 corner of Section 2, T5N, R6E, thence N 0°17'E, 99 feet, thence N89°43'W, 234.6 feet, thence S 0°17'W, 99 feet, thence S89°43'E, 234.6 feet to place of beginning. The above described property containing a Replat of vacated Elm Street, vacated Cherry Street and the North 1/2 of vacated North Street and Lots 14, 17 and 18 of Section 5 and Lots 27 through 36 inclusive of Section 6 of 4 Northern and Eastern Addition to Mount Pleasant as recorded November 16, 1845 in Volume 8 of Deeds on Page 410, John Cook, Proprietor and A.E. Hatham, Surveyor.

MUNICIPAL APPROVAL

This plat was approved by the Township Board of the Township of Fenton at a meeting held Aug 25, 1953 G.C. Lutz (Clerk)

APPROVAL BY BOARD OF COUNTY ROAD COMMISSIONERS

This plat has been examined and was approved on the 19th day of August 1953 by the Genesee County Board of Road Commissioners
Vermon (Chairman)
Willard (Member)
R.L. Smith (Member)

COUNTY TREASURER'S CERTIFICATE

Office of County Treasurer, Genesee County. I hereby certify that there are no tax liens or titles held by the State on the lands described hereon, and that there are no tax liens or titles held by individuals on said lands, for the five years preceding the 13th day of July 1953 and that the taxes for said period of five years are all paid, as shown by the records of this office

This certificate does not apply to taxes, if any, now in process of collection by township, city or village collecting officers.
James P. Barkey (County Treasurer)

APPROVAL BY COUNTY PLAT BOARD

This plat was approved on the 19th day of July 1953 by the County Plat Board

Earl P. Smith (County Register of Deeds)
George G. Dunn (County Clerk)
James P. Barkey (County Treasurer)
B. E. O'Brien (County Drain Commissioner)

SURVEYOR'S CERTIFICATE

I hereby certify that the plat hereon delineated is a correct one, and that permanent monuments consisting of iron rods of at least one half inch in diameter and 48 inches in length, encased in concrete cylinders four inches in diameter and 48 inches in length, have been set at points marked thus (O) as thereon shown at all angles in the boundaries of the land platted, at all intersections of streets and at intersections of streets with the boundaries of the plat.

Robert L. Mitchell
Registered Land Surveyor
Robert L. Mitchell 6636

COPY

Recorder's Office
Genesee County, Michigan
Plat of Klein's Fenton Lake Subdivision
was recorded on the 13th day of July 1953 at 1:00 o'clock
at Flint, Michigan

Note: Original lots of A Northern and Eastern Addition to Mount Pleasant are shown in red