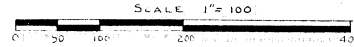
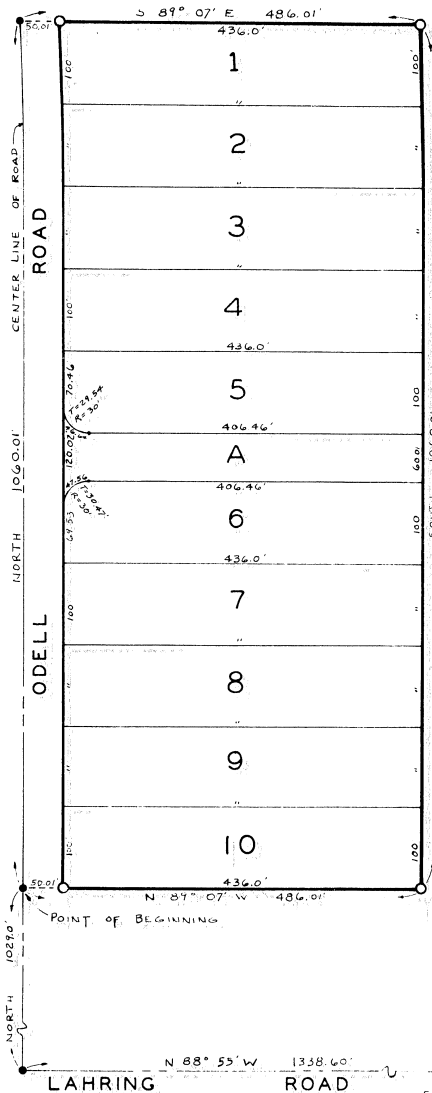


M^cCUBBIN ACRES

PART OF THE SE 1/4 OF SECTION 8, T5N-R6E,
FENTON TOWNSHIP, GENESEE COUNTY, MICHIGAN.



NOTE ALL DIMENSIONS ARE IN FEET, AND DECIMALS THEREOF



DESCRIPTION OF LAND PLATTED

THE LAND EMBRACED IN THE ANNEXED PLAT OF M^cCUBBIN ACRES, PART OF THE SE 1/4 OF SECTION 8, T5N-R6E, FENTON TOWNSHIP, GENESEE COUNTY, MICHIGAN IS DESCRIBED AS FOLLOWS, BEGINNING AT A POINT IN THE CENTER LINE OF ODELL ROAD THAT IS N 89° 55' W 1338.60 FEET AND NORTH 1029.0 FEET FROM THE SE CORNER OF SAID SECTION 8, THENCE NORTH 1060.01 FEET, THENCE S 89° 07' E 476.01 FEET, THENCE SOUTH 1060.01 FEET, THENCE N 89° 07' W 476.01 FEET TO THE POINT OF BEGINNING. THIS PLAT CONTAINS 10 NUMBERED LOTS AND 1 LETTERED LOT.

CERTIFICATE OF APPROVAL BY BOARD OF COUNTY ROAD COMMISSIONERS

THIS PLAT HAS BEEN EXAMINED AND WAS APPROVED ON THE 10th DAY OF June 1958 BY THE GENESEE COUNTY BOARD OF ROAD COMMISSIONERS.

C. M. Fullard *R. Harold Bergh*
C. M. FULLARD, COMMISSIONER R. HAROLD BERGH, COMMISSIONER
Robt G. Stoddard
ROBT G. STODDARD, COMMISSIONER

CERTIFICATE OF APPROVAL BY COUNTY BOARD

THIS PLAT WAS APPROVED ON THE _____ DAY OF _____ 1958.

Earl M. Smith *James P. Barkey*
EARL M. SMITH, REGISTER OF DEEDS JAMES P. BARKEY, COUNTY TREASURER
B. E. O'Brien *George G. Dunn*
B. E. O'BRYEN, DRAIN COMMISSIONER GEORGE G. DUNN, COUNTY CLERK

CERTIFICATE OF MUNICIPAL APPROVAL

THIS PLAT WAS APPROVED BY THE TOWNSHIP BOARD OF THE TOWNSHIP OF FENTON, AT A MEETING HELD ON THE _____ DAY OF _____ 1958.

G. C. Lutz
G. C. LUTZ, TOWNSHIP CLERK

COPY
Register's Office
County Clerk
Filed
was recorded this _____ day of _____
in _____ at _____
on page _____
_____ Register of Deeds
_____ County Clerk

DEDICATION

KNOW ALL MEN BY THESE PRESENTS, THAT WE, MAX D. D. McCUBBIN, A SINGLE MAN, AND ALBERT C. McCUBBIN AND BLANCH McCUBBIN, HIS WIFE, AS PROPRIETORS, HAVE CAUSED THE LAND EMBRACED IN THE ANNEXED PLAT TO BE SURVEYED, LAID OUT, AND PLATTED, TO BE KNOWN AS "M^cCUBBIN ACRES", PART OF THE SE 1/4 OF SECTION 8, T5N-R6E, FENTON TOWNSHIP, GENESEE COUNTY, MICHIGAN AND THAT THE ROAD AS SHOWN ON SAID PLAT IS HEREBY DEDICATED TO THE PUBLIC.

WITNESSED:

Bernard Henderson
BERNARD HENDERSON
Darwin L. Hauglie
DARWIN L. HAUGLIE

Max D. D. McCubbin
MAX D. D. McCUBBIN
Albert C. McCubbin
ALBERT C. McCUBBIN
Blanch McCubbin
BLANCH McCUBBIN

STATE OF MICHIGAN)
COUNTY OF GENESEE)

ON THIS 2nd DAY OF JUNE 1958 BEFORE ME, A NOTARY PUBLIC IN AND FOR SAID COUNTY, PERSONALLY CAME THE ABOVE NAMED MAX D. D. McCUBBIN, A SINGLE MAN, AND ALBERT C. McCUBBIN AND BLANCH McCUBBIN, HIS WIFE, KNOWN TO ME TO BE THE PERSONS WHO EXECUTED THE ABOVE DEDICATION, AND ACKNOWLEDGED THE SAME TO BE THEIR FREE ACT AND DEED.

MY COMMISSION EXPIRES AUGUST 13, 1961

Carl H. Carlson
CARL H. CARLSON
NOTARY PUBLIC, GENESEE COUNTY
MICHIGAN

COUNTY TREASURER'S CERTIFICATE RELATING TO TAXES

OFFICE OF THE COUNTY TREASURER, GENESEE COUNTY, MICHIGAN.
I HEREBY CERTIFY THAT THERE ARE NO TAX LIENS OR TITLES HELD BY THE STATE ON THE LANDS DESCRIBED HEREON, AND THAT THERE ARE NO TAX LIENS OR TITLES HELD BY INDIVIDUALS ON SAID LANDS FOR THE FIVE YEARS PRECEDING THE _____ DAY OF _____ 1958, AND THAT THE TAXES FOR SAID PERIOD OF FIVE YEARS ARE PAID AS SHOWN BY THE RECORDS OF THIS OFFICE. THIS CERTIFICATE DOES NOT APPLY TO TAXES, IF ANY, NOW IN PROCESS OF COLLECTION BY TOWNSHIP, CITY, OR VILLAGE COLLECTION OFFICERS.

James P. Barkey
JAMES P. BARKEY, COUNTY TREASURER

SURVEYOR'S CERTIFICATE

I HEREBY CERTIFY THAT THE PLAT HEREON DELINEATED IS A CORRECT ONE AND THAT PERMANENT MONUMENTS CONSISTING OF IRON BARS AT LEAST ONE-HALF INCH IN DIAMETER AND 36 INCHES IN LENGTH, ENCASED IN CONCRETE CYLINDERS 4 INCHES IN DIAMETER AND 36 INCHES IN LENGTH HAVE BEEN SET AT POINTS MARKED THUS (O) AS THEREON SHOWN AT ALL ANGLES IN THE BOUNDARIES OF THE LAND PLATTED, AT ALL ANGLES IN THE STREETS, AT ALL INTERSECTIONS OF THE LINES OF STREETS WITH THE BOUNDARIES OF THE PLAT.

Carl H. Carlson
CARL H. CARLSON
REGISTERED PROFESSIONAL CIVIL
ENGINEER #9189

CERTIFYING FEE PAID \$1.00

James P. Barkey
GENESEE COUNTY TREASURER

I hereby certify this copy is a true copy of used on and forwarded the Register of Deeds for recording.

Date _____ FILED IN AUDITOR GENERAL'S DEPT.

Date _____ EXAMINED AND APPROVED

Reginald B. ...
Auditor General

40692