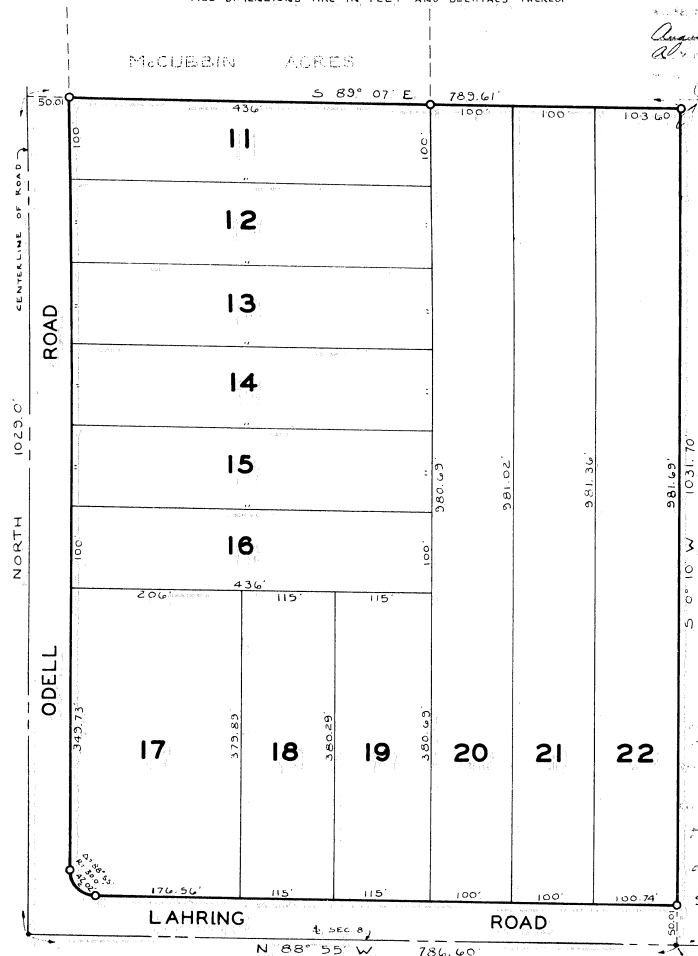
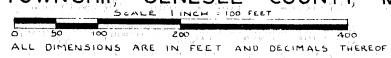


McCUBBIN ACRES No. 1

PART OF THE S.E. 1/4 OF SECTION 8, T5N-R6E,
FENTON TOWNSHIP GENESEE COUNTY, MICHIGAN



POINT OF BEGINNING
N 88° 55' W, 552.00 FT.
FROM SE COR., SEC. 8,
T5N, R6E

Mc Cubbin Acres
No. 1
August 21, 1958
August 22, 1958
August 23, 1958
48
James Rust

DESCRIPTION OF LAND PLATTED

THE LAND EMPACED IN THE ANNEXED PLAT OF MCCUBBIN ACRES NO. 1, PART OF THE SE 1/4 OF SECTION 8, T5N-R6E, FENTON TOWNSHIP, GENESEE COUNTY, MICHIGAN IS DESCRIBED AS FOLLOWS, BEGINNING AT A POINT ON THE SOUTH LINE OF SAID SECTION 8, THENCE N 88° 55' W, 552.00 FEET FROM THE SE CORNER OF SAID SECTION 8, THENCE N 88° 55' W, 786.60 FEET TO THE CENTER LINE OF ODELL ROAD, THENCE NORTH 1020.00 FEET, THENCE S 89° 07' E, 789.61 FEET, THENCE S 0° 10' W 1031.70 FEET TO THE POINT OF BEGINNING. CONTAINING 12 NUMBERED LOTS.

DEDICATION

KNOW ALL MEN BY THESE PRESENTS, THAT WE, MAX D. D. MCCUBBIN, A SINGLE MAN, AND ALBERT C. MCCUBBIN AND BLANCH MCCUBBIN, HIS WIFE, AS PROPRIETORS, HAVE CAUSED THE LAND EMPACED IN THE ANNEXED PLAT TO BE SURVEYED, LAID OUT, AND PLATTED, TO BE KNOWN AS "MCCUBBIN ACRES NO. 1", PART OF THE SE 1/4 OF SECTION 8, T5N-R6E, FENTON TOWNSHIP, GENESEE COUNTY, MICHIGAN, AND THAT THE ROADS AS SHOWN ON SAID PLAT ARE HEREBY DEDICATED TO THE USE OF THE PUBLIC.

WITNESSED:

Bernard Henderson
BERNARD HENDERSON
Shirley Eaton
SHIRLEY EATON

Max D. D. McCubbin
MAX D. D. MCCUBBIN
Albert C. McCubbin
ALBERT C. MCCUBBIN
Blanch McCubbin
BLANCH MCCUBBIN

STATE OF MICHIGAN)
COUNTY OF GENESEE)

ON THIS 21st DAY OF August 1958 BEFORE ME, A NOTARY PUBLIC IN AND FOR SAID COUNTY, PERSONALLY CAME THE ABOVE NAMED MAX D. D. MCCUBBIN, A SINGLE MAN, AND ALBERT C. MCCUBBIN AND BLANCH MCCUBBIN, HIS WIFE, KNOWN TO ME TO BE THE PERSONS WHO EXECUTED THE ABOVE DEDICATION, AND ACKNOWLEDGED THE SAME TO BE THEIR FREE ACT AND DEED.

MY COMMISSION EXPIRES AUGUST 13, 1961

Carl H. Carlson
CARL H. CARLSON
NOTARY PUBLIC, GENESEE COUNTY
MICHIGAN

CERTIFICATE OF APPROVAL BY BOARD OF COUNTY ROAD COMMISSIONERS

THIS PLAT HAS BEEN EXAMINED AND WAS APPROVED ON THE 14th DAY OF August 1958 BY THE GENESEE COUNTY BOARD OF ROAD COMMISSIONERS.

C. M. Bullard
C. M. BULLARD, COMMISSIONER
Harold Bergh
A. HAROLD BERGH, COMMISSIONER
Robert G. Stoddard
ROBT' G. STODDARD, COMMISSIONER

CERTIFICATE OF APPROVAL BY COUNTY BOARD

THIS PLAT WAS APPROVED ON THE 20 DAY OF August 1958.

Earl M. Smith
EARL M. SMITH, REGISTER OF DEEDS
James P. Barkey
JAMES P. BARKEY, COUNTY TREAS.
D. E. O'Brien
D. E. O'BRIEN, DRAIN COMMISSIONER
George G. Quinn
GEORGE G. QUINN, COUNTY CLERK

CERTIFICATE OF MUNICIPAL APPROVAL

THIS PLAT WAS APPROVED BY THE TOWNSHIP BOARD OF THE TOWNSHIP OF FENTON, AT A MEETING HELD ON THE 14th DAY OF August 1958.

G. C. Lutz
G. C. LUTZ, TOWNSHIP CLERK

8 7-58
CERTIFYING RECORD
GENESEE COUNTY TREASURER

SURVEYOR'S CERTIFICATE

I HEREBY CERTIFY THAT THE PLAT HEREON DELINEATED IS A CORRECT ONE AND THAT PERMANENT MONUMENTS CONSISTING OF IRON PINS AT LEAST ONE-HALF INCH IN DIAMETER AND 36 INCHES IN LENGTH, ENGRAVED WITH THE WORDS "GENESEE COUNTY" AS THEREON SHOWN AT ALL ANGLES IN THE BOUNDARIES OF THE ANNEXED TRUS (O) ALL ANGLES IN THE STREETS, AT ALL INTERSECTIONS OF THE LINES OF STREETS WITH THE BOUNDARIES OF THE PLAT.

Carl H. Carlson
CARL H. CARLSON
REGISTERED PROFESSIONAL CIVIL
ENGINEER #3109

COUNTY TREASURER'S CERTIFICATE RELATING TO TAXES

OFFICE OF THE COUNTY TREASURER, GENESEE COUNTY, MICHIGAN.
I HEREBY CERTIFY THAT THERE ARE NO TAX LIENS OR TITLES HELD BY THE STATE ON THE LANDS DESCRIBED HEREON, AND THAT THERE ARE NO TAX LIENS OR TITLES HELD BY INDIVIDUALS ON SAID LANDS FOR THE FIVE YEARS PRECEDING THE DATE OF THIS CERTIFICATE. THE RECORDS OF THIS OFFICE FOR SAID PERIOD OF FIVE YEARS ARE PAID AS SHOWN BY THE RECORDS OF THIS OFFICE. THE TAXES DUES DO NOT APPLY TO TAXES, IF ANY, NOW IN PROCESS OF COLLECTION BY TOWNSHIP, CITY, OR VILLAGE COLLECTION OFFICERS.

James P. Barkey
JAMES P. BARKEY, COUNTY TREAS.

