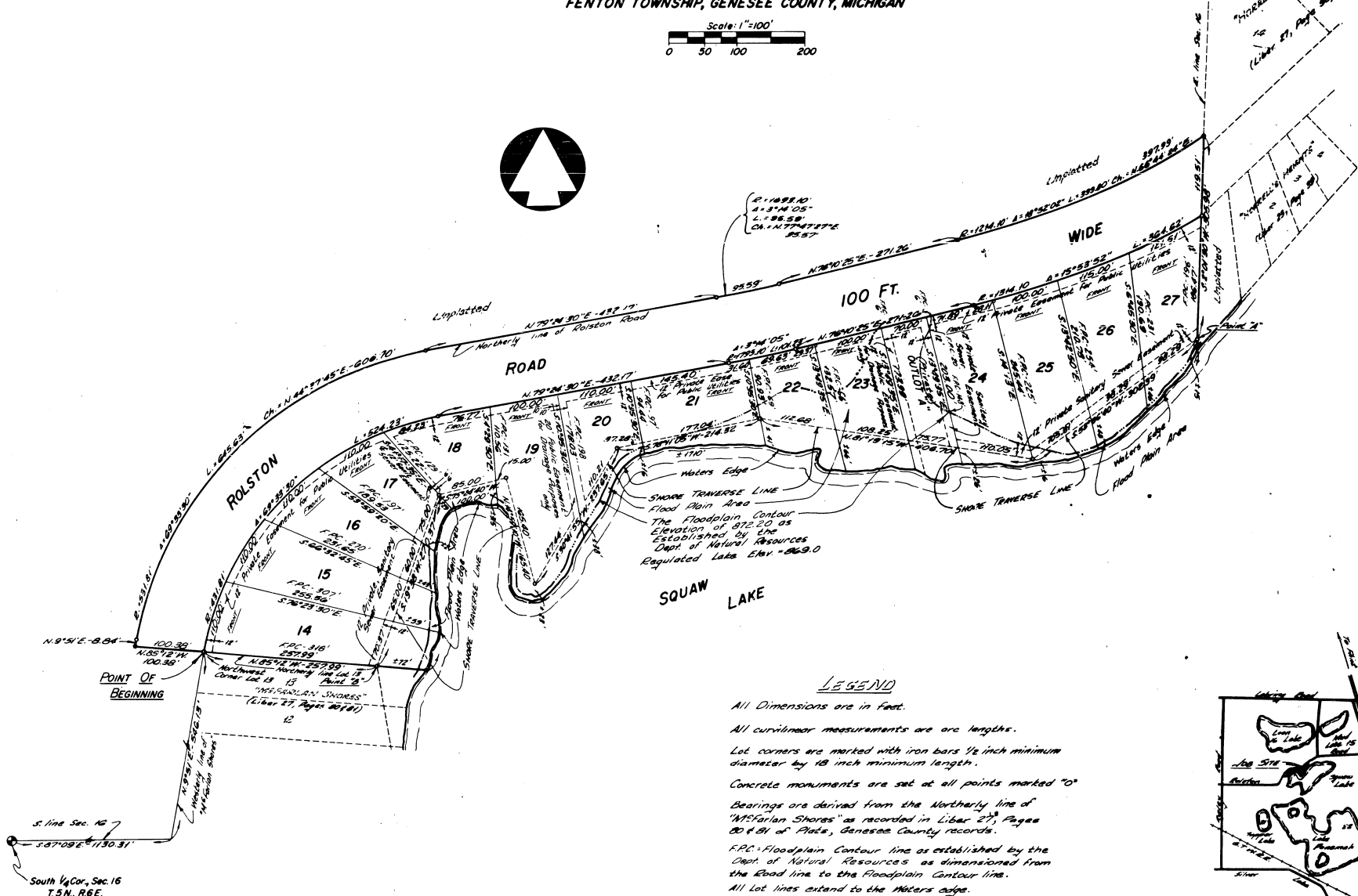
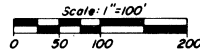


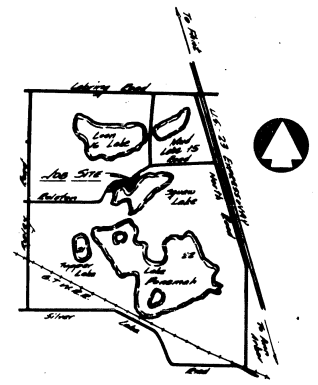
# "McFARLAN SHORES NO. 2"

PART OF THE S.E. 1/4 OF SECTION 16, T.5N., R.6E.,  
FENTON TOWNSHIP, GENESEE COUNTY, MICHIGAN



### LEGEND

- All Dimensions are in feet.
- All curvilinear measurements are arc lengths.
- Lot corners are marked with iron bars 1/2 inch minimum diameter by 18 inch minimum length.
- Concrete monuments are set at all points marked "C".
- Bearings are derived from the Northerly line of "McFarlan Shores" as recorded in Liber 27, Pages 80 & 81 of Plat's, Genesee County records.
- F.P.C. - Floodplain Contour line as established by the Dept. of Natural Resources as dimensioned from the Road line to the Floodplain Contour line.
- All Lot lines extend to the Waters edge.



LOCATION

PLAN



55018

# "McFARLAN SHORES NO. 2"

PART OF THE S.E. ¼ OF SECTION 16, T.5N., R.6E.,  
FENTON TOWNSHIP, GENESEE COUNTY, MICHIGAN

## SURVEYOR'S CERTIFICATE

I, John D. Albright, surveyor, certify:

That I have surveyed, divided, and mapped the land shown on this plat described as follows: "McFarlan Shores No. 2" part of the Southeast ¼ of Section 16, T.5 N., R.6 E., Fenton Township, Genesee County, Michigan, more particularly described as follows: Beginning at the Northwest corner of Lot 13 of "McFarlan Shores" (Liber 27, Pages 80 & 81) which bears S.87°09'E. 1130.31 ft., along the South line of Section 16 and along the Westerly line of said "McFarlan Shores" N.9°51'E. 546.13 ft. from the South ¼ Corner of Section 16; thence N.85°12'W. 100.38 ft.; thence along the Westerly and Northerly line of Rolston Road, so-called, N.9°51'E. 8.84 ft., and 645.63 ft. along a curve to the right, Radius 531.81 ft., Central Angle 69°33'30", Chord Bearing N.44°37'45"E. 606.70 ft., and N.79°24'30"E. 432.17 ft., and 95.59 ft. along a curve to the left, Radius 1693.10 ft., Central Angle 3°14'10", Chord Bearing N.77°47'12"E. 95.57 ft., and N.76°10'12"E. 271.26 ft., and 399.80 ft. along a curve to the left, Radius 1214.10 ft., Central Angle 18°52'02", Chord Bearing N.66°44'24"E. 397.99 ft., to the East line of Section 16; thence along said East line of Section 16, S.2°01'30"W. 305.98 ft. to Point "A"; thence continuing along said East line of Section 16, S.2°01'30"W. 15 ft. more or less to the waters edge of Squaw Lake, so-called; thence Southwesterly, Westerly, Southwesterly, Northerly, Westerly, and Southerly along said waters edge, to the Northerly line of said Lot 13, of "McFarlan Shores"; thence along said Northerly line of Lot 13, N.85°12'W. 72 ft. more or less to Point "B", said Point "B" bearing S.53°36'40"W. 302.39 ft., and N.81°19'19"W. 406.70 ft., and S.78°11'05"W. 214.32 ft., and S.30°41'55"W. 237.65 ft., and N.14°59'10"W. 165.40 ft., and S.75°24'40"W. 100.00 ft., and S.19°38'W. 270.37 ft. from said Point "A"; thence continuing along said Northerly line of Lot 13, N.85°12'W. 257.99 ft. to the point of beginning. Containing 14 Lots numbered 14 thru 27 both inclusive, Outlot "A", and no Parks.

That I have made such survey, land-division and plat by the direction of the owners of such land.

That such plat is a correct representation of all the exterior boundaries of the land surveyed and the subdivision of it.

That the required monuments and lot markers have been located in the ground or that surely has been deposited with the municipality, as required by Section 125 of the Act.

That the accuracy of survey is within the limits required by Section 126 of the Act.

That the Bearings shown on the plat are expressed as required by Section 126 (3) of the Act and as explained in the legend.

Jan. 6, 1975

JOHN D. ALBRIGHT  
Registered Land Surveyor  
922 E. Maple Street  
Holly, Michigan  
48442

*John D. Albright*  
JOHN D. ALBRIGHT /RLS #10057



## PROPRIETOR'S CERTIFICATE

We as proprietors, certify that we caused the land embraced in this plat to be surveyed, divided, mapped and dedicated as represented on this plat and that the roads are for the use of the public; that the public utility easements are private easements and that all other easements are for the use shown on the plat. All lots extend to the waters edge, Outlot "A" is private for the purpose of Drainage, Sanitary Sewer and use of the proprietor, his heirs and assigns for access.

ESTATE OF HAROLD J. McFARLAN (Deceased)

*John L. King*  
John L. King (Witness)

*Stephen G. Josephson*  
Stephen G. Josephson (Witness)

*L. E. Winkelhaus*  
L. E. Winkelhaus, Trustee  
Letter of Authority appointing L. E. Winkelhaus Trustee for the Estate of Harold J. McFarlan, issued by the Probate Court of Washtenaw County, as recorded in Liber 1902, Page 481, Genesee County records.  
201 E. Liberty Street  
Ann Arbor, Michigan 48108

This plat is subject to restrictions as required by Act 288 of 1967, as amended on certain lots with respect to the requirements of the Michigan Department of Natural Resources and/or the Michigan Department of Public Health, which are recorded in Liber 1930, Page 107-110 of Genesee County records.

## ACKNOWLEDGMENT

STATE OF MICHIGAN )  
Washtenaw County ) s.s.

Personally came before me this Thirteenth day of JAN., 1975, the above named L.E. Winkelhaus, Trustee for the Estate of Harold J. McFarlan (deceased), to me known to be the person who executed the foregoing instrument and acknowledged that he executed the same as his free act and deed.

*Lancy E. Foster*  
Lancy E. Foster Notary Public  
Washtenaw County  
My Commission expires 3-27-77

## COUNTY TREASURER'S CERTIFICATE

The records in my office show no unpaid taxes or special assessments for the five years preceding January 23, 1975, involving the lands included in this plat.

*William P. Barkey, Jr.*  
William P. Barkey, Jr. (Co. Treasurer)

## COUNTY DRAIN COMMISSIONER'S CERTIFICATE

Approved on 7-21, 1975, as complying with Section 192 of Act 288, P.A. of 1967, and the applicable rules and regulations published by my office in the County of Genesee.

*Anthony Ragione*  
Anthony Ragione (Drain Commissioner)

## CERTIFICATE OF COUNTY ROAD COMMISSIONER'S

Approved on July 31, 1975, as complying with Section 183 of Act 288, P.A. of 1967, and the applicable published rules and regulations of the Board of Road Commissioners of Genesee County.

*Freston E. Schmidt* (Chairman)  
*Raymond M. Newman* (Vice-Chairman)  
*John P. Hajdich* (Member)

## CERTIFICATE OF MUNICIPAL APPROVAL

I certify that this plat was approved by the Township Board of Fenton Township, at a meeting held August 4, 1975, and was reviewed and found to be in compliance with Act 288, P.A. of 1967.  
Approved by the Genesee County Department of Health October 2, 1975.

*Charles L. Mueller*  
Charles L. Mueller (Clerk)

## COUNTY PLAT BOARD CERTIFICATE

This plat has been reviewed and is approved by the Genesee County Plat Board on August 7th, 1975, as being in compliance with all of the provisions of Act 288, P.A. of 1967, and the plat board's applicable rules and regulations.

Certified true copy of Recorded plat

*Allison Green*  
ALLISON GREEN  
STATE TREASURER  
By *Richard E. Lomas*  
Richard E. Lomas, Not. Public  
Date December 16, 1975

*Floyd J. McGree*  
Floyd J. McGree (Register of Deeds)  
*William P. Barkey, Jr.*  
William P. Barkey, Jr. (Co. Treasurer)  
*George G. Dunn* (County Clerk)

## RECORDING CERTIFICATE

STATE OF MICHIGAN )  
Genesee County ) s.s.

This plat was revived for record on the fourth day of December, 1975, at 3:04 p.m., recorded in Liber 54 of Plats on Pages 72-73.

*Floyd J. McGree*  
Floyd J. McGree (Register of Deeds)