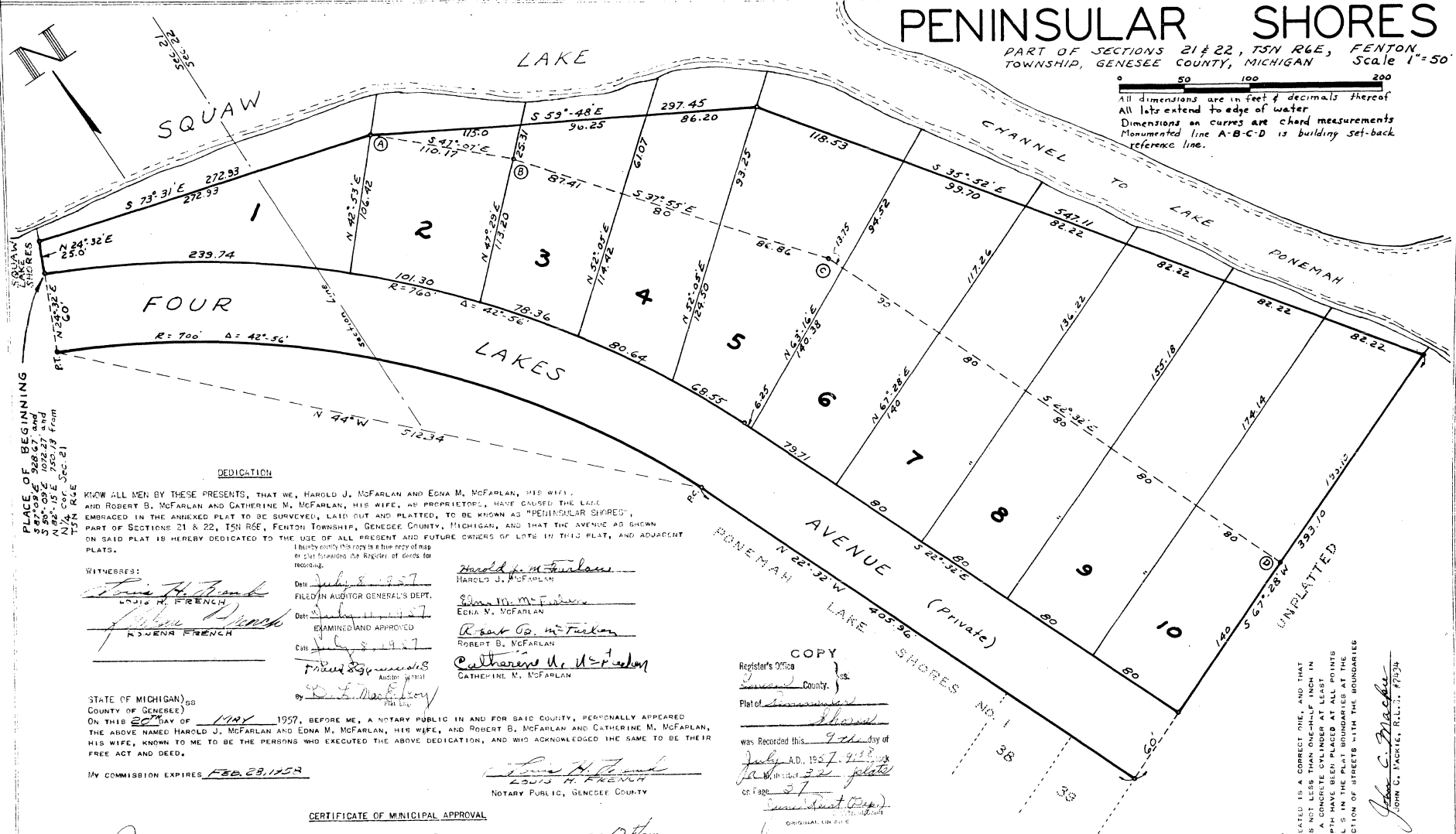


PENINSULAR SHORES

PART OF SECTIONS 21 & 22, T5N R6E, FENTON TOWNSHIP, GENESEE COUNTY, MICHIGAN Scale 1"=50'

All dimensions are in feet & decimals thereof
All lots extend to edge of water
Dimensions on curves are chord measurements
Monumented line A-B-C-D is building set-back reference line.



PLACE OF BEGINNING
SQUAW LAKE SHORES
S 87°05' E 928.67' and
S 80°09' E 1022.27' and
N 82°15' E 272.93' from
T5N R6E

DEDICATION

KNOW ALL MEN BY THESE PRESENTS, THAT WE, HAROLD J. McFARLAN and EDNA M. McFARLAN, HIS WIFE, AND ROBERT B. McFARLAN and CATHERINE M. McFARLAN, HIS WIFE, AS PROPRIETORS, HAVE CAUSED THE LAKE AND EMBRACED IN THE ANNEXED PLAT TO BE SURVEYED, LAID OUT AND PLATTED, TO BE KNOWN AS "PENINSULAR SHORES", PART OF SECTIONS 21 & 22, T5N R6E, FENTON TOWNSHIP, GENESEE COUNTY, MICHIGAN, AND THAT THE AVENUE AS SHOWN ON SAID PLAT IS HEREBY DEDICATED TO THE USE OF ALL PRESENT AND FUTURE OWNERS OF LOTS IN THIS PLAT, AND ADJACENT PLATS.

WITNESSES:

Louis H. French
LOUIS H. FRENCH
Kathleen French
KATHLEEN FRENCH

I hereby certify this copy is a true copy of map or plat forwarded the Register of Deeds for recording.

Date: July 8, 1957
FILED IN AUDITOR GENERAL'S DEPT.

Date: July 11, 1957
EXAMINED AND APPROVED

Date: July 8, 1957
FILED IN REGISTER OF DEEDS

By: *John C. Mackie*
John C. Mackie, R.L.S. 1775A

Harold J. McFarlan
HAROLD J. McFARLAN
Edna M. McFarlan
EDNA M. McFARLAN
Robert B. McFarlan
ROBERT B. McFARLAN
Catherine M. McFarlan
CATHERINE M. McFARLAN

STATE OF MICHIGAN) SS
COUNTY OF GENESEE)
ON THIS 20th DAY OF JUNE, 1957, BEFORE ME, A NOTARY PUBLIC IN AND FOR SAID COUNTY, PERSONALLY APPEARED THE ABOVE NAMED HAROLD J. McFARLAN and EDNA M. McFARLAN, HIS WIFE, AND ROBERT B. McFARLAN and CATHERINE M. McFARLAN, HIS WIFE, KNOWN TO ME TO BE THE PERSONS WHO EXECUTED THE ABOVE DEDICATION, AND WHO ACKNOWLEDGED THE SAME TO BE THEIR FREE ACT AND DEED.

MY COMMISSION EXPIRES FEB. 28, 1958

Louis H. French
LOUIS H. FRENCH
NOTARY PUBLIC, GENESEE COUNTY

CERTIFICATE OF MUNICIPAL APPROVAL

THIS PLAT WAS APPROVED BY THE TOWNSHIP BOARD OF THE TOWNSHIP OF FENTON, AT A MEETING HELD ON THE 14th DAY OF June, 1957.

G. C. Lutz
G. C. LUTZ, TOWNSHIP CLERK

DESCRIPTION OF LAND PLATTED

THE LAND EMBRACED IN THE ANNEXED PLAT OF "PENINSULAR SHORES", PART OF SECTIONS 21 & 22, T5N R6E, FENTON TOWNSHIP, GENESEE COUNTY, MICHIGAN, IS DESCRIBED AS FOLLOWS: BEGINNING AT A POINT IN THE NORTH LINE OF FOUR LAKES AVENUE THAT IS S 87° 09' E 928.67 FEET, AND S 30° 20' E 1072.27 FEET, AND N 82° 15' E 750.13 FEET FROM THE N₂ CORNER OF SAID SECTION 21, T5N R6E, THENCE FROM THIS PLACE OF BEGINNING, N 24° 30' E 25.0 FEET, THENCE S 73° 31' E 272.93 FEET, THENCE S 59° 48' E 297.45 FEET, THENCE S 35° 52' E 547.11 FEET, THENCE S 67° 28' W 393.10 FEET, THENCE N 22° 32' W 405.96 FEET TO A POINT OF CURVE, THENCE TO THE LEFT ON A CURVE (RADIUS= 700 FEET, CENTRAL ANGLE 42° 56'), LONG CHORD BEARING AND DISTANCE N 44° W 512.34 FEET, TO A POINT OF TANGENCY, THENCE N 24° 32' E 60 FEET TO THE PLACE OF BEGINNING. THIS PLAT CONTAINS TEN LOTS AND INCLUDES A REPLAT OF PART OF FOUR LAKES AVENUE. ALL LOTS EXTEND TO THE EDGE OF WATER.

CERTIFICATE OF APPROVAL BY BOARD OF COUNTY ROAD COMMISSIONERS

THIS PLAT HAS BEEN EXAMINED AND WAS APPROVED ON THE 25 DAY OF June, 1957 BY THE GENESEE COUNTY BOARD OF ROAD COMMISSIONERS.

C. M. Bullard C. M. BULLARD-COMMISSIONER
A. Harold Bergh A. HAROLD BERGH-COMMISSIONER
Robert G. Stoddard ROBERT G. STODDARD-COMMISSIONER

COPY
Register's Office
Genee County
Plat of Peninsular Shores No. 1
was Recorded this 9th day of July, A.D., 1957. 9:33
at 10:20 o'clock AM of the 20th day of June, 1957.
John C. Mackie
ORIGINAL UNFILED

CERTIFICATE OF APPROVAL BY COUNTY BOARD

THIS PLAT WAS APPROVED ON THE ___ DAY OF ___ 19__

GEORGE G. DUNN, COUNTY CLERK
Earl M. Smith EARL M. SMITH-REGISTER OF DEEDS
B.E. O'Brien B.E. O'BRIEN, DRAIN COMMISSIONER
James P. Barkey JAMES P. BARKEY-COUNTY TREASURER

COUNTY TREASURER'S CERTIFICATE RELATIVE TO TAXES

OFFICE OF THE COUNTY TREASURER, GENESEE COUNTY, MICHIGAN
I HEREBY CERTIFY THAT THERE ARE NO TAX LIENS OR TITLES HELD BY THE STATE ON THE LANDS DESCRIBED HEREON, AND THAT THERE ARE NO TAX LIENS OR TITLES HELD BY INDIVIDUALS ON SAID LANDS FOR THE FIVE YEARS PRECEDING THE DAY OF June, 1957, AND THAT TAXES FOR SAID PERIOD OF FIVE YEARS ARE PAID AS SHOWN BY THE RECORDS OF THIS OFFICE. THIS CERTIFICATE DOES NOT APPLY TO TAXES, IF ANY, NOW IN PROCESS OF COLLECTION BY TOWNSHIP, CITY OR VILLAGE COLLECTION OFFICERS.

James P. Barkey
JAMES P. BARKEY-COUNTY TREASURER
FLINT SURVEYING CO.

SHORELINE CERTIFICATE
I HEREBY CERTIFY THAT THE PLAT HEREON DELINEATED IS A CORRECT ONE, AND THAT PERMANENT METAL MARKERS CONSTITUTING OF MARKS NOT LESS THAN ONE-HALF INCH IN DIAMETER AND 36 INCHES IN LENGTH ENCASED IN A CONCRETE CYLINDER AT LEAST FOUR INCHES IN DIAMETER AND 36 INCHES IN DEPTH HAVE BEEN PLACED AT ALL POINTS MARKED THIS "G" AS THEREIN SHOWN, AT ALL ANGLES IN THE PLAT BOUNDARIES AT THE INTERSECTIONS OF STREETS AND AT THE INTERSECTION OF STREETS WITH THE BOUNDARIES OF THE PLAT AS SHOWN ON SAID PLAT.

John C. Mackie
JOHN C. MACKIE, R.L.S. 1775A

39557