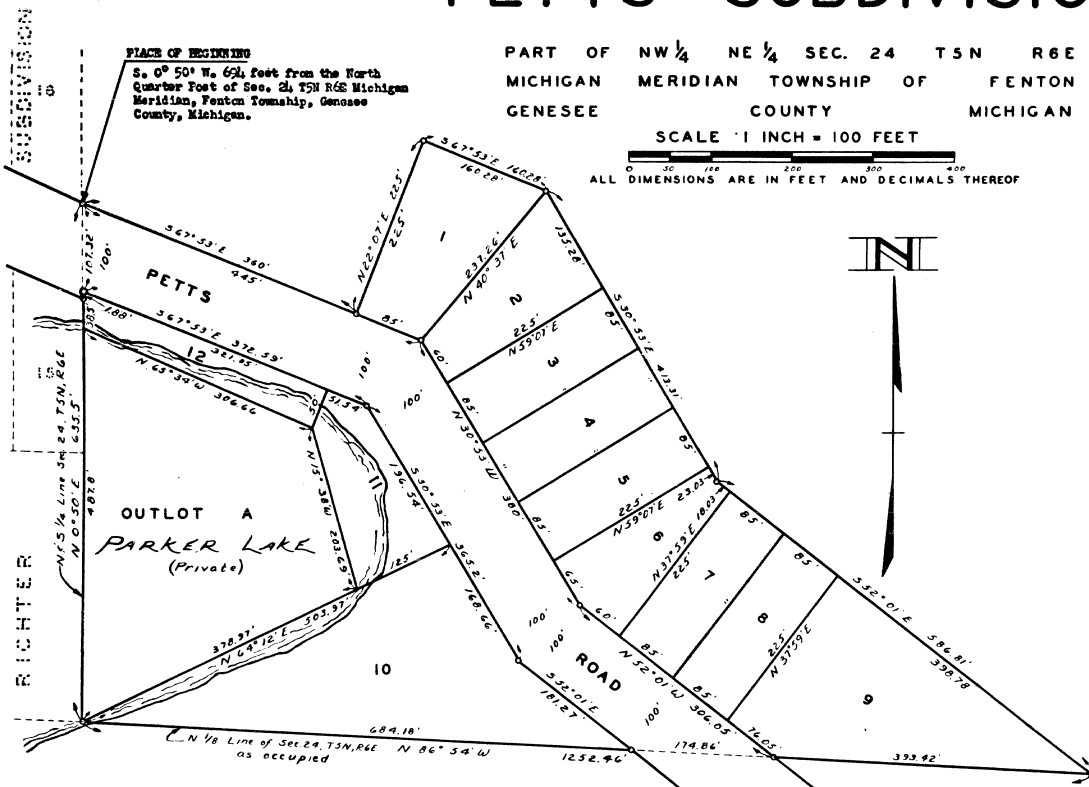


# PETTS SUBDIVISION

PART OF NW 1/4 NE 1/4 SEC. 24 T5N R6E  
MICHIGAN MERIDIAN TOWNSHIP OF FENTON  
GENESEEE COUNTY MICHIGAN

SCALE 1 INCH = 100 FEET

ALL DIMENSIONS ARE IN FEET AND DECIMALS THEREOF



**CERTIFICATE OF MUNICIPAL APPROVAL**

This plat was approved by the Township Board of the Township of Fenton at a meeting held on the 12th day of July 1947.

Gustav C. Lutz  
Township Clerk

**CERTIFICATE OF APPROVAL BY BOARD OF COUNTY ROAD COMMISSIONERS**

This plat has been examined and was approved on the 2nd day of September 1947 by the Genesee County Board of Road Commissioners.

C. M. Bullard - Commissioner  
A. Harold Bergh - Commissioner  
Ivan M. Vernon - Commissioner

**CERTIFICATE OF APPROVAL BY COUNTY BOARD**

This plat was approved on the 3rd day of SEPT 1947.

Leonard E. Freeman  
Leonard E. Freeman - Reg. of Deeds  
Marie C. McCarra  
Marie C. McCarra - County Treasurer  
George G. Dunn  
George G. Dunn - County Clerk

**SURVEYOR'S CERTIFICATE**

I hereby certify that the plat hereon delineated is a correct one and that permanent metal monuments consisting of bars not less than one half inch in diameter and 4 1/2 inches in length encased in a concrete cylinder at least four inches in diameter and 4 1/2 inches in depth, have been placed at points marked thus "0" as shown shown at all angles in the boundaries of the land platted, at the intersections of the streets, and at the intersections of streets with the boundaries of the plat as shown on said plat.

Clarence F. Allman  
Reg. Surveyor # 5432  
Flint, Michigan.

**Examined and Approved**

Sept 9, 1947  
Mayno Joseph  
County Auditor (General)

Sept 11, 1947  
Mayno Joseph  
County Auditor (General)

**DEDICATION**

KNOW ALL MEN BY THESE PRESENTS, That we, George R. Petts and Sophia M. Petts, his wife, and Ralph A. Petts, and Georgia H. Petts, his wife, as proprietors, have caused the land embraced in the annexed plat to be surveyed, laid out and platted, to be known as "PETTS SUBDIVISION" Part of NW 1/4 NE 1/4 Sec. 24, T5N R6E Michigan Meridian, Township of Fenton, Genesee County, Michigan, and that the road as shown on said plat is hereby dedicated to the use of the public.

Witnesses:  
George R. Petts (L.S.)  
Sophia M. Petts (L.S.)  
Ralph A. Petts (L.S.)  
Georgia H. Petts (L.S.)

On this 24th day of June 1947, before me, a notary public in and for said county personally appeared the above named George R. Petts, Sophia M. Petts, Ralph A. Petts, and Georgia H. Petts, known to me to be the persons who executed the above dedication and who acknowledged the same to be their free act and deed.

My Commission Expires 2/2/50  
Ada Mackeal  
Notary Public, Genesee Co., Michigan.

**DESCRIPTION OF LAND PLATTED**

The land embraced in the annexed plat of "PETTS SUBDIVISION" Part of NW 1/4 NE 1/4 Sec. 24, T5N R6E Michigan Meridian, Township of Fenton, Genesee County, Michigan is described as follows: Beginning on the North and South quarter Line S. 0° 50' N. 69.40 feet from the North Quarter Post of said Section 24, thence S. 67° 53' E. 360 feet, thence N. 22° 07' E. 225 feet, thence S. 67° 53' E. 160.28 feet, thence S. 30° 53' E. 413.31 feet, thence S. 52° 01' E. 586.81 feet, thence N. 86° 54' W. 1252.16 feet to north and south quarter line, thence N. 0° 50' E. 655.5 feet to the place of beginning.

**COUNTY TREASURER'S CERTIFICATE RELATING TO TAXES**

Office of County Treasurer, Genesee County, Michigan  
I hereby certify that there are no tax liens or titles held by the State on the lands described hereon, and that there are no tax liens or titles held by individuals on said lands for the five years preceding the 2nd day of September 1947, and that the taxes for said period of five years are paid as shown by the records of this office.  
This certificate does not apply to taxes, if any, now in process of collection by township, city, or village collection officers.

Marie C. McCarra  
Marie C. McCarra - County Treasurer.

Register's Office  
Genesee County, Michigan  
Plat of "Petts Subdivision"  
Fenton Township  
was recorded on the 16th day of Sept 1947 at 10:40 o'clock  
A. M. in Lib. 22 of Plats  
in Page 14  
Leonard E. Freeman  
REGISTRAR

HEREBY CERTIFY THAT THIS COPY IS A TRUE COPY OF THE L.P. OR PLAT ON HAND IN THE REGISTER OF DEEDS - OR RECORDS.

COMPARED Sept 9, 1947  
Mayno Joseph  
County Auditor (General)

30406