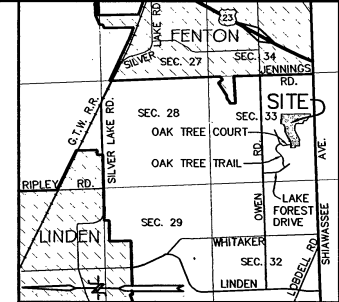
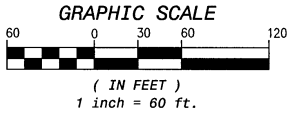
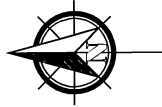


PINNACLE SHORES No. 3

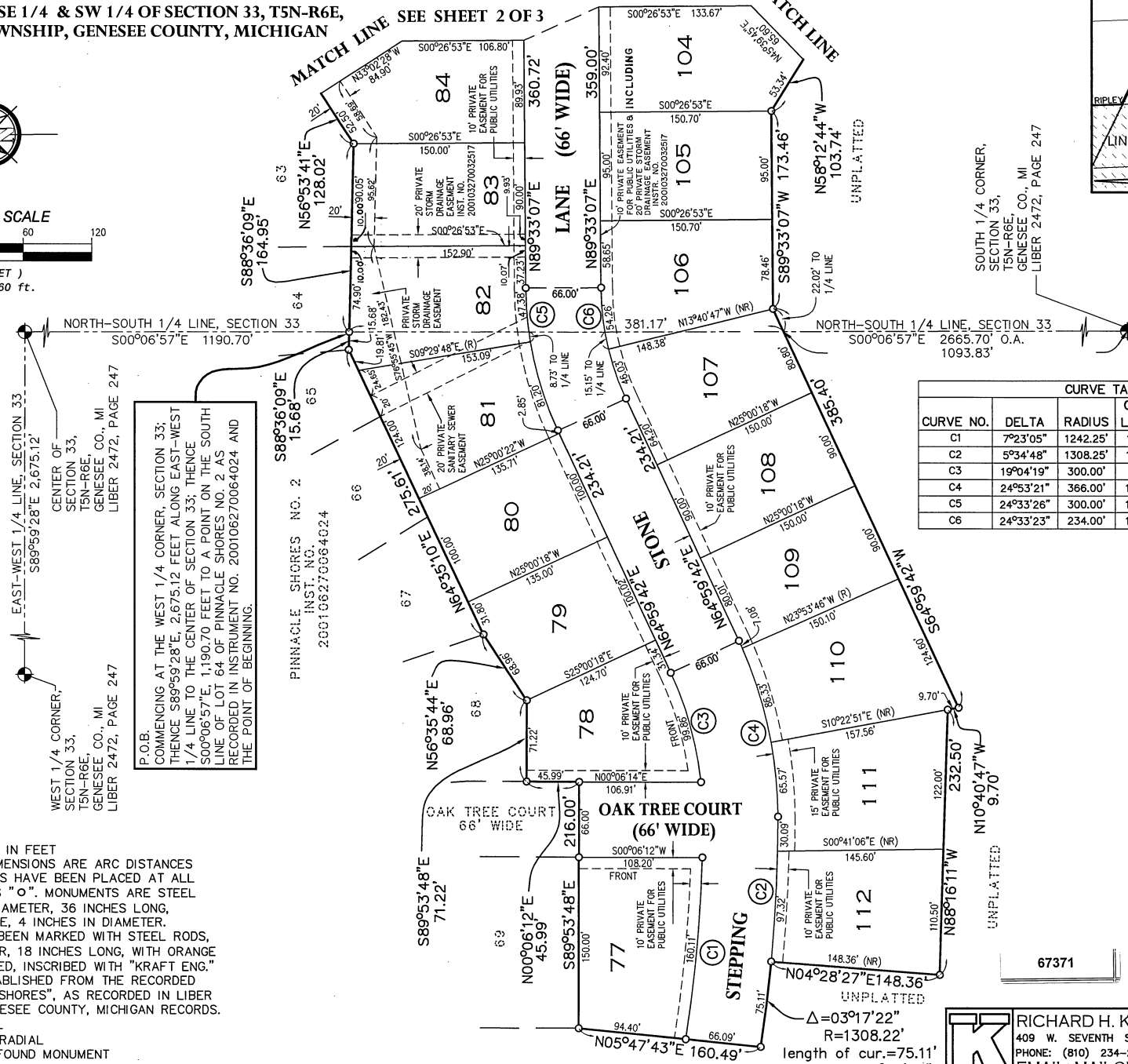
PART OF THE SE 1/4 & SW 1/4 OF SECTION 33, T5N-R6E,
FENTON TOWNSHIP, GENESEE COUNTY, MICHIGAN

SEE SHEET 2 OF 3

MATCH LINE SEE SHEET 2 OF 3



LOCATION MAP
NOT TO SCALE



P.O.B.
COMMENCING AT THE WEST 1/4 CORNER, SECTION 33;
THENCE S89°59'28"E, 2,675.12 FEET ALONG EAST-WEST
1/4 LINE TO THE CENTER OF SECTION 33; THENCE
S00°06'57"E, 1,190.70 FEET TO A POINT ON THE SOUTH
LINE OF LOT 64 OF PINNACLE SHORES NO. 2 AS
RECORDED IN INSTRUMENT NO. 200106270064024 AND
THE POINT OF BEGINNING.

EAST-WEST 1/4 LINE, SECTION 33
S89°59'28"E 2,675.12'
CENTER OF SECTION 33,
SECTION 33,
T5N-R6E,
GENESEE CO., MI
LIBER 2472, PAGE 247

WEST 1/4 CORNER,
SECTION 33,
T5N-R6E,
GENESEE CO., MI
LIBER 2472, PAGE 247

CURVE TABLE					
CURVE NO.	DELTA	RADIUS	CURVE LENGTH	CHORD LENGTH	CHORD BEARING
C1	7°23'05"	1242.25'	160.11'	160.00'	S84°46'54"E
C2	5°34'48"	1308.25'	127.41'	127.36'	S87°19'33"E
C3	19°04'19"	300.00'	99.86'	99.40'	N74°31'51"E
C4	24°53'21"	366.00'	158.98'	157.74'	N77°26'22"E
C5	24°33'26"	300.00'	128.58'	127.60'	N77°16'24"E
C6	24°33'23"	234.00'	100.29'	99.53'	N77°16'24"E

SOUTH 1/4 CORNER,
SECTION 33,
T5N-R6E,
GENESEE CO., MI
LIBER 2472, PAGE 247

LEGEND

- ALL DIMENSIONS ARE IN FEET
- ALL CURVILINEAR DIMENSIONS ARE ARC DISTANCES
- CONCRETE MONUMENTS HAVE BEEN PLACED AT ALL POINTS MARKED THUS "O". MONUMENTS ARE STEEL RODS, 1/2 INCH IN DIAMETER, 36 INCHES LONG, ENCASED IN CONCRETE, 4 INCHES IN DIAMETER.
- LOT CORNERS HAVE BEEN MARKED WITH STEEL RODS, 1/2 INCH IN DIAMETER, 18 INCHES LONG, WITH ORANGE PLASTIC CAPS AFFIXED, INSCRIBED WITH "KRAFT ENG."
- BEARINGS WERE ESTABLISHED FROM THE RECORDED PLAT OF "PINNACLE SHORES", AS RECORDED IN LIBER 74, PAGE 24-28 GENESEE COUNTY, MICHIGAN RECORDS.
- (R) INDICATES RADIAL
- (NR) INDICATES NON-RADIAL
- FD. MON. INDICATES FOUND MONUMENT
- CURVE NUMBER (CS)



RICHARD H. KRAFT ENGINEERING, INC.
409 W. SEVENTH STREET FLINT, MICHIGAN 48503
PHONE: (810) 234-2694 234-2695 FAX: 234-2696
EMAIL: MAIL@KRAFTENGINEERING.COM

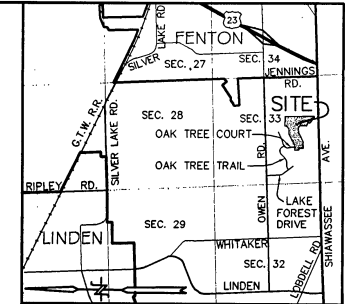
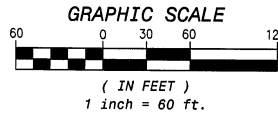


PINNACLE SHORES No. 3

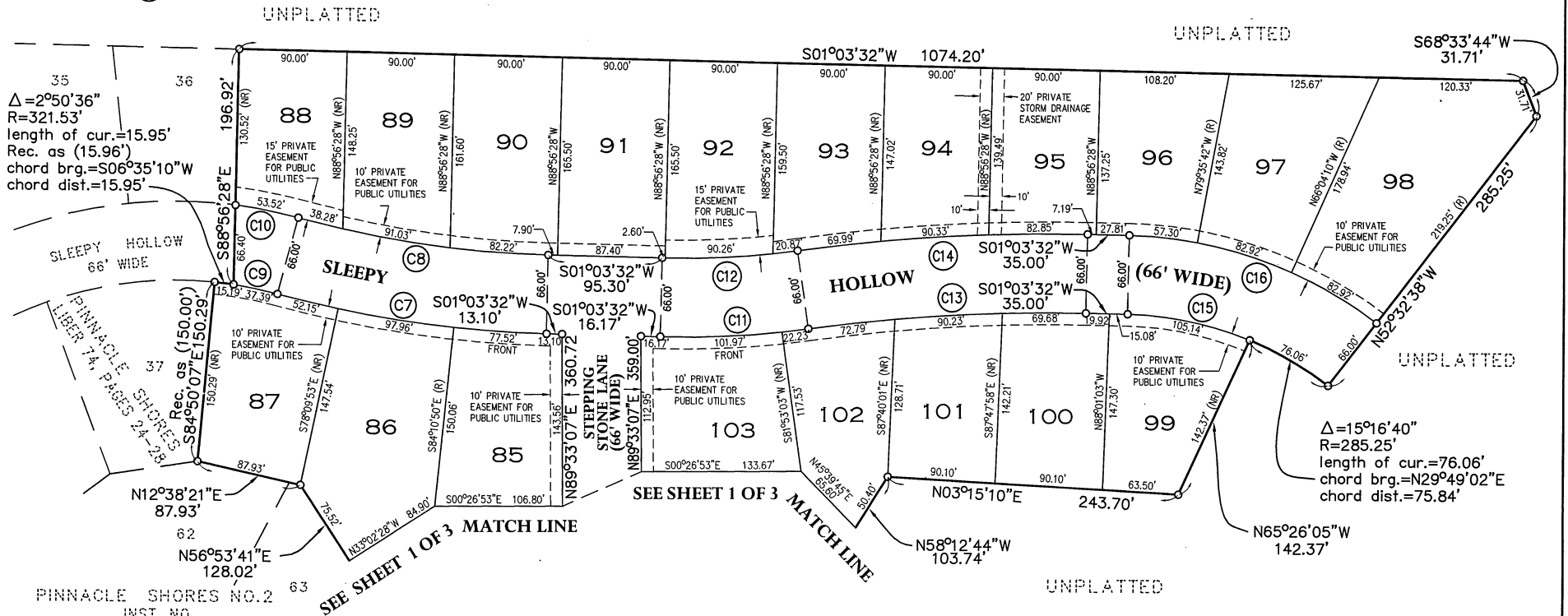
PART OF THE SE 1/4 & SW 1/4 OF SECTION 33, T5N-R6E,
FENTON TOWNSHIP, GENESEE COUNTY, MICHIGAN

LEGEND

1. ALL DIMENSIONS ARE IN FEET
2. ALL CURVILINEAR DIMENSIONS ARE ARC DISTANCES
3. CONCRETE MONUMENTS HAVE BEEN PLACED AT ALL POINTS MARKED THUS "O". MONUMENTS ARE STEEL RODS, 1/2 INCH IN DIAMETER, 36 INCHES LONG, ENCASED IN CONCRETE, 4 INCHES IN DIAMETER.
4. LOT CORNERS HAVE BEEN MARKED WITH STEEL RODS, 1/2 INCH IN DIAMETER, 18 INCHES LONG, WITH ORANGE PLASTIC CAPS AFFIXED, INSCRIBED WITH "KRAFT ENG."
5. BEARINGS WERE ESTABLISHED FROM THE RECORDED PLAT OF "PINNACLE SHORES", AS RECORDED IN LIBER 74, PAGE 24-28 GENESEE COUNTY, MICHIGAN RECORDS.
6. (R) INDICATES RADIAL
7. (NR) INDICATES NON-RADIAL
8. FD. MON. INDICATES FOUND MONUMENT
9. CURVE NUMBER (C9)



LOCATION MAP
NOT TO SCALE



Δ=2°50'36"
R=321.53'
length of cur.=15.95'
Rec. as (15.96')
chord brg.=S06°35'10"W
chord dist.=15.95'

Δ=15°16'40"
R=285.25'
length of cur.=76.06'
chord brg.=N29°49'02"E
chord dist.=75.84'

CURVE NO.	DELTA	RADIUS	LENGTH	CHORD	BEARING
C7	13°58'45"	933.00'	227.63'	227.07'	N81°57'05"W
C8	13°58'45"	867.00'	211.53'	211.01'	N81°57'05"W
C9	6°39'46"	321.53'	37.39'	37.37'	S78°55'06"E
C10	7°54'45"	387.53'	53.52'	53.48'	S78°55'06"E
C11	9°05'18"	783.00'	124.20'	124.07'	S86°30'53"W
C12	9°05'18"	717.00'	113.73'	113.61'	S86°30'53"W
C13	9°05'18"	1467.00'	232.70'	232.46'	N86°30'53"E
C14	9°05'18"	1533.00'	243.17'	242.91'	N86°30'53"E
C15	21°07'07"	285.25'	105.14'	104.55'	S78°22'53"E
C16	36°23'50"	351.25'	223.14'	219.40'	S70°44'33"E

CERTIFIED TRUE COPY OF
RECORDED PLAT
BY DEPARTMENT OF CONSUMER
AND INDUSTRY SERVICES
BY *Mamad K. Dyer*
MAYNARD R. DYER, P.S., DIRECTOR
OFFICE OF LAND SURVEY
AND REMONUMENTATION
DATE: 5-28-2004



RICHARD H. KRAFT ENGINEERING, INC.
409 W. SEVENTH STREET FLINT, MICHIGAN 48503
PHONE: (810) 234-2694 234-2695 FAX: 234-2696
EMAIL: MAIL@KRAFTENGINEERING.COM

PINNACLE SHORES No. 3

PART OF THE SE 1/4 & SW 1/4 OF SECTION 33, T5N-R6E,
FENTON TOWNSHIP, GENESEE COUNTY, MICHIGAN

SURVEYOR'S CERTIFICATE:

I, RICHARD H. KRAFT, SURVEYOR, CERTIFY:

THAT I HAVE SURVEYED, DIVIDED AND MAPPED THE LAND SHOWN ON THIS PLAT, DESCRIBED AS FOLLOWS:

PINNACLE SHORES NO. 3 SE 1/4 & SW 1/4

PART OF THE ~~SOUTH 1/2~~ SOUTH 1/2 OF SECTION 33, T5N-R6E, FENTON TOWNSHIP, GENESEE COUNTY, MICHIGAN DESCRIBED AS FOLLOWS: BEGINNING AT A POINT ON THE SOUTH LINE OF LOT 64 OF PINNACLE SHORES NO. 2 AS RECORDED IN INSTRUMENT NO. 200106270064024, GENESEE COUNTY, MICHIGAN WHICH IS S89°59'28"E, 2675.12 FEET ALONG THE EAST-WEST 1/4 LINE OF SAID SECTION 33 TO THE CENTER OF SAID SECTION 33 AND S00°06'57"E, 1190.70 FEET ALONG THE NORTH-SOUTH 1/4 LINE OF SAID SECTION 33 FROM THE WEST 1/4 CORNER OF SAID SECTION 33 TO THE POINT OF BEGINNING; THENCE THE FOLLOWING THREE COURSES ALONG THE SOUTH LINE OF SAID PINNACLE SHORES NO. 2, S88°36'09"E, 164.95 FEET AND N56°53'41"E, 128.02 FEET AND N12°38'21"E, 87.93 FEET TO THE SOUTHWEST CORNER OF LOT 37 OF PINNACLE SHORES AS RECORDED IN LIBER 74, PAGE 24, GENESEE COUNTY, MICHIGAN; THENCE THE FOLLOWING THREE COURSES ALONG THE SOUTH LINE OF SAID PINNACLE SHORES; S84°50'07"E, 150.29 FEET (PREVIOUSLY RECORDED AS 150.00 FEET) TO THE POINT OF CURVATURE OF A NON-TANGENT CIRCULAR CURVE TO THE RIGHT HAVING A DELTA ANGLE OF 02°50'36" AND A RADIUS OF 321.53 FEET, AND ALONG SAID CURVE 15.95 FEET HAVING A CHORD BEARING AND DISTANCE OF S08°35'10"W, 15.95 FEET AND S88°56'28"E, 196.92 FEET; THENCE S01°03'32"W, 1074.20 FEET; THENCE S68°33'44"W, 31.71 FEET; THENCE N52°32'38"W, 285.25 FEET TO THE POINT OF CURVATURE OF A NON-TANGENT CIRCULAR CURVE TO THE LEFT HAVING A DELTA ANGLE OF 15°16'40" AND A RADIUS OF 285.25 FEET; THENCE ALONG SAID CURVE 76.06 FEET HAVING A CHORD BEARING AND DISTANCE OF N29°49'02"E, 75.84 FEET; THENCE N65°26'05"W, 142.37 FEET; THENCE N03°15'10"E, 243.70 FEET; THENCE N58°12'44"W, 103.74 FEET; THENCE S89°33'07"W, 173.46 FEET; THENCE S64°59'42"W, 385.40 FEET; THENCE N10°40'47"W, 9.70 FEET; THENCE N88°16'11"W, 232.50 FEET; THENCE N04°28'27"E, 148.36 FEET TO THE POINT OF CURVATURE OF A NON-TANGENT CIRCULAR CURVE TO THE RIGHT HAVING A DELTA ANGLE OF 03°17'22" AND A RADIUS OF 1308.22 FEET; THENCE ALONG SAID CURVE 75.11 FEET HAVING A CHORD BEARING AND DISTANCE OF N82°53'28"W, 75.10 FEET; THENCE N05°47'43"E, 160.49 FEET TO THE SOUTHWEST CORNER OF LOT 69 OF SAID PINNACLE SHORES NO. 2; THENCE THE FOLLOWING 6 COURSES ALONG THE SOUTH LINE OF SAID PINNACLE SHORES NO. 2, S89°53'48"E, 216.00 FEET AND N00°06'12"E, 45.99 FEET AND S89°53'48"E 71.22 FEET AND N56°35'44"E, 68.96 FEET AND N64°35'10"E, 275.61 FEET AND S88°36'09"E, 15.68 FEET TO THE POINT OF BEGINNING.

CONTAINING 15.167 ACRES OF LAND AND 36 LOTS, NUMBERED 77 THRU 112, AND

THAT I HAVE MADE SUCH SURVEY, LAND DIVISION, AND PLAT BY THE DIRECTION OF THE OWNER OF SUCH LAND.

THAT SUCH PLAT IS A CORRECT REPRESENTATION OF ALL THE EXTERIOR BOUNDARIES OF THE LAND SURVEYED AND THE SUBDIVISION OF IT.

THAT THE REQUIRED MONUMENTS AND LOT MARKERS HAVE BEEN LOCATED IN THE GROUND OR THAT SURETY HAS BEEN DEPOSITED WITH THE MUNICIPALITY, AS REQUIRED BY SECTION 125 OF THE ACT.

THAT THE ACCURACY OF SURVEY IS WITHIN THE LIMITS REQUIRED BY SECTION 126 OF THE ACT.

THAT THE BEARINGS SHOWN ON THE PLAT ARE EXPRESSED AS REQUIRED BY SECTION 126 (3) OF THE ACT AND AS EXPLAINED IN THE LEGEND.

DATE: 10-6-03



RICHARD H. KRAFT ENGINEERING, INC.
409 W. SEVENTH STREET
FLINT, MICHIGAN 48503

Richard H. Kraft

RICHARD H. KRAFT, PRESIDENT
PROFESSIONAL SURVEYOR NO. 10064

PROPRIETOR'S CERTIFICATE

TOM ATWELL HOMES & REALTY, INC., A CORPORATION DULY ORGANIZED AND EXISTING UNDER THE LAWS OF THE STATE OF MICHIGAN, BY THOMAS G. ATWELL, PRESIDENT, AS PROPRIETOR HAS CAUSED THE LAND EMBRACED IN THIS PLAT TO BE SURVEYED, DIVIDED, MAPPED, AND DEDICATED AS REPRESENTED ON THIS PLAT; AND THAT THE ROADS ARE FOR THE USE OF THE PUBLIC; THAT THE PUBLIC UTILITY EASEMENTS ARE PRIVATE EASEMENTS; THAT ALL OTHER EASEMENTS ARE FOR THE USES SHOWN ON THE PLAT.

WITNESSES:

Michael R. Pifer

MICHAEL R. PIFER

Darcy R. Ureche

DARCY R. URECHE

TOM ATWELL HOMES & REALTY, INC.
A MICHIGAN CORPORATION
4410 OAK TREE TRAIL
FENTON, MICHIGAN 48430

Thomas G. Atwell

THOMAS G. ATWELL, PRESIDENT

ACKNOWLEDGMENT

STATE OF MICHIGAN)
)S.S.
COUNTY OF GENESEE)

PERSONALLY CAME BEFORE ME THIS 16th DAY OF October, 2003, THOMAS G. ATWELL, PRESIDENT OF THE ABOVE NAMED CORPORATION, TO ME KNOWN TO BE THE PERSON WHO EXECUTED THE FOREGOING INSTRUMENT, AND TO ME KNOWN TO BE SUCH PRESIDENT OF SAID CORPORATION, AND ACKNOWLEDGED THAT HE EXECUTED THE FOREGOING INSTRUMENT AS SUCH OFFICER AS THE FREE ACT AND DEED OF SAID CORPORATION, BY ITS AUTHORITY.

NOTARY PUBLIC Gail Stanke GENESEE COUNTY, MICHIGAN
GAIL STANKE

MY COMMISSION EXPIRES January 6, 2005

COUNTY TREASURER'S CERTIFICATE

THE RECORDS IN MY OFFICE SHOW NO UNPAID TAXES OR SPECIAL ASSESSMENTS FOR THE FIVE YEARS PRECEDING Oct 17, 2003, 2003, INVOLVING THE LANDS INCLUDED IN THIS PLAT.

Daniel T. Kildee
DANIEL T. KILDEE, GENESEE COUNTY TREASURER

COUNTY DRAIN COMMISSIONER'S CERTIFICATE

APPROVED ON December 10th, 2003, AS COMPLYING WITH SECTION 192 OF ACT 288, P.A. 1967 AND THE APPLICABLE RULES AND REGULATIONS PUBLISHED BY MY OFFICE IN THE COUNTY OF GENESEE.

Jeffrey Wright
JEFFREY WRIGHT, DRAIN COMMISSIONER

CERTIFICATE OF COUNTY ROAD COMMISSIONERS

APPROVED ON January 27, 2004, AS COMPLYING WITH SECTION 183 OF ACT 288, P.A. 1967 AND THE APPLICABLE PUBLISHED RULES AND REGULATIONS OF THE BOARD OF ROAD COMMISSIONERS OF GENESEE COUNTY.

David L. Miller
DAVID L. MILLER, MEMBER

Bonita Lefear-White
BONITA LEFEAR-WHITE, CHAIRPERSON

Galen Jamison
GALEN JAMISON, VICE-CHAIRPERSON

CERTIFICATE OF MUNICIPAL APPROVAL

I CERTIFY THAT THIS PLAT WAS APPROVED BY THE TOWNSHIP BOARD OF THE TOWNSHIP OF FENTON, AT A MEETING HELD February 6, 2004 AND WAS REVIEWED AND FOUND TO BE IN COMPLIANCE WITH ACT 288, P.A. OF 1967, AND THE PRELIMINARY PLAT WAS APPROVED ON 3-14-2000 BY THE GENESEE COUNTY HEALTH DEPARTMENT; AND THAT THE PUBLIC SANITARY SEWER HAS BEEN INSTALLED AND IS READY FOR CONNECTION.

Robert E. Krug
ROBERT E. KRUG, TOWNSHIP CLERK

COUNTY PLAT BOARD CERTIFICATE

THIS PLAT HAS BEEN REVIEWED AND IS APPROVED BY THE GENESEE COUNTY PLAT BOARD ON February 6, 2004 AS BEING IN COMPLIANCE WITH ALL OF THE PROVISIONS OF ACT 288, P.A. OF 1967, AND THE PLAT BOARD'S APPLICABLE RULES AND REGULATIONS.

Melvin Phillip McCree
MELVIN PHILLIP MCCREE, REGISTER OF DEEDS

Michael J. Carr
MICHAEL J. CARR, COUNTY CLERK

Daniel T. Kildee
DANIEL T. KILDEE, COUNTY TREASURER

RECORDING CERTIFICATE

STATE OF MICHIGAN)
COUNTY OF GENESEE)

THIS PLAT WAS RECEIVED FOR RECORD ON THE 19th DAY OF MAY, 2004.
AT 10:54 A.M. AND RECORDED IN INSTRUMENT NO. 200405190056304

Melvin Phillip McCree
MELVIN PHILLIP MCCREE, REGISTER OF DEEDS



K RICHARD H. KRAFT ENGINEERING, INC.
409 W. SEVENTH STREET FLINT, MICHIGAN 48503
PHONE: (810) 234-2694 234-2695 FAX: 234-2696
EMAIL: MAIL@KRAFTENGINEERING.COM

67371

SHEET NO. 3 OF 3