

FILED IN AUDITOR GENERAL'S DEPT.

Wayne Jewell Purdy
DEPUTY AUDITOR GENERAL
Wayne Jewell Purdy

DEDICATION

Know All MEN BY THESE PRESENTS: That we, Stanley Bandurski, Widower, and Chester J. Bandurski, a single man, as proprietors, have caused the lands embraced in the annexed plat to be surveyed, laid out and platted to be known as "PONEMAH" part of SW 1/4 SE 1/4 Section 22, T5N, R6E, Fenton Township, Genesee County, Michigan, and that the Road as shown is hereby dedicated to the Public.

Signed and Sealed in presence of
Stanley Bandurski
Chester J. Bandurski
HENRY MYKANT
W. PAWLIKOWSKI

Stanley Bandurski & S.
STANLEY BANDURSKI
Chester J. Bandurski S.
CHESTER J. BANDURSKI

I HEREBY CERTIFY THAT THIS COPY IS A TRUE COPY OF THE MAP OR PLAT FORWARDED THE REGISTER OF DEEDS FOR RECORDING.

COMPARED
Wayne Jewell Purdy
DEPUTY AUDITOR GENERAL
Wayne Jewell Purdy

PONEMAH

PART OF SW 1/4 SE 1/4 SECTION 22, T5N, R6E,
FENTON TWP, GENESSEE CO, MICHIGAN.

Scale 1" = 50 feet

Examined and Approved

Wayne Jewell Purdy
DEPUTY AUDITOR GENERAL
Wayne Jewell Purdy

ACKNOWLEDGEMENT

STATE OF MICHIGAN } ss. On this 2. day of Aug. AD 1950, before me, a Notary Public in and for said County, personally came the above named Stanley Bandurski, widower, and Chester J. Bandurski, as single men, known to me to be the persons who executed the above dedication, and acknowledged the same to be their free act and deed. My Commission Expires Oct. 31, 1950

Wladyslaw S. Pawlikowski
Wladyslaw S. Pawlikowski
Notary Public, Wayne Co., Michigan.

COUNTY TREASURER'S CERTIFICATE

OFFICE OF COUNTY TREASURER, GENESSEE COUNTY, MICHIGAN
I hereby certify, that there are no tax liens or titles held by the State on the lands described below, and that there are no tax liens or titles held by individuals on the said lands, for the five years preceding the day of August 2, 1950, and that the taxes for said period of five years are all paid, as shown by the records of this office. This certificate does not apply to taxes, if any, now in process of collection by Township collecting officer.

JAMES P. BARKEY, COUNTY TREASURER

DESCRIPTION OF LAND PLATTED

The land embraced in the annexed plat of "PONEMAH" part of SW 1/4 SE 1/4 Section 22, T5N, R6E, Fenton Township, Genesee County, Michigan, is described as follows: Starting at the SE Corner of Section 22, T5N, R6E, Michigan Meridian, Thence N 0° 30' E, along Section line, 1022.5 feet; Thence, along Center line of Ponemah Drive, S 67° 30' W, 1221 feet, and N 72° 15' W, 222.65 feet, to E. line of Ponemah Branch; Thence S 0° 0' E, 500 feet, to the point of beginning, said point being the NE corner of Lot #58, Ponemah Branch; Thence from said point of beginning, S 0° 0' E, along East line of said plat, 422.5 ft, to SE Corner of said Lot #58; Thence N 88° 06' W, along South line of said plat, 689.15 feet, to South line of Ponemah Drive, so called, as widened by County Road Commission; Thence, along said S. line, N 66° 35' E, 46.27 feet; N 43° 41' E, 456.0 feet, along a curve to the Right of Radius 232.04 feet, distance of 256.43 feet (Long chord bearing N 75° 20' 30" E, Long Chord length, 243.61 feet, Intercept 63° 19'); and S 73° 0' E, 70.85 feet, to the E. line of said plat; Thence S 0° 0' E, 18.23 feet, to the point of beginning. Said lands being a replat of all that part of Lot #58 of "Supervisor's Plat of Ponemah Branch" as recorded in 1187-18 of Plats on page 25 of Genesee County records, lying South of Ponemah Drive as relocated through widening by County Road Commission.

CERTIFICATE OF MUNICIPAL APPROVAL

This plat was APPROVED by the Township Board of Fenton Township on August 7, 1950.

APPROVAL BY COUNTY ROAD COMMISSION

Examined and APPROVED by the Genesee County Road Commission on Aug. 8, 1950.

C.M. Dillard
C.M. Dillard, Commissioner
Ivan M. Vernon
Ivan M. Vernon, Commissioner
A. Harold Bergh
A. Harold Bergh, Commissioner

CERTIFICATE OF APPROVAL BY COUNTY PLAT BOARD

This plat was APPROVED by the Genesee County Plat Board on August 2, 1950.

Earl M. Smith
EARL M. SMITH, REGISTER OF DEEDS.

JAMES P. BARKEY, COUNTY TREASURER.

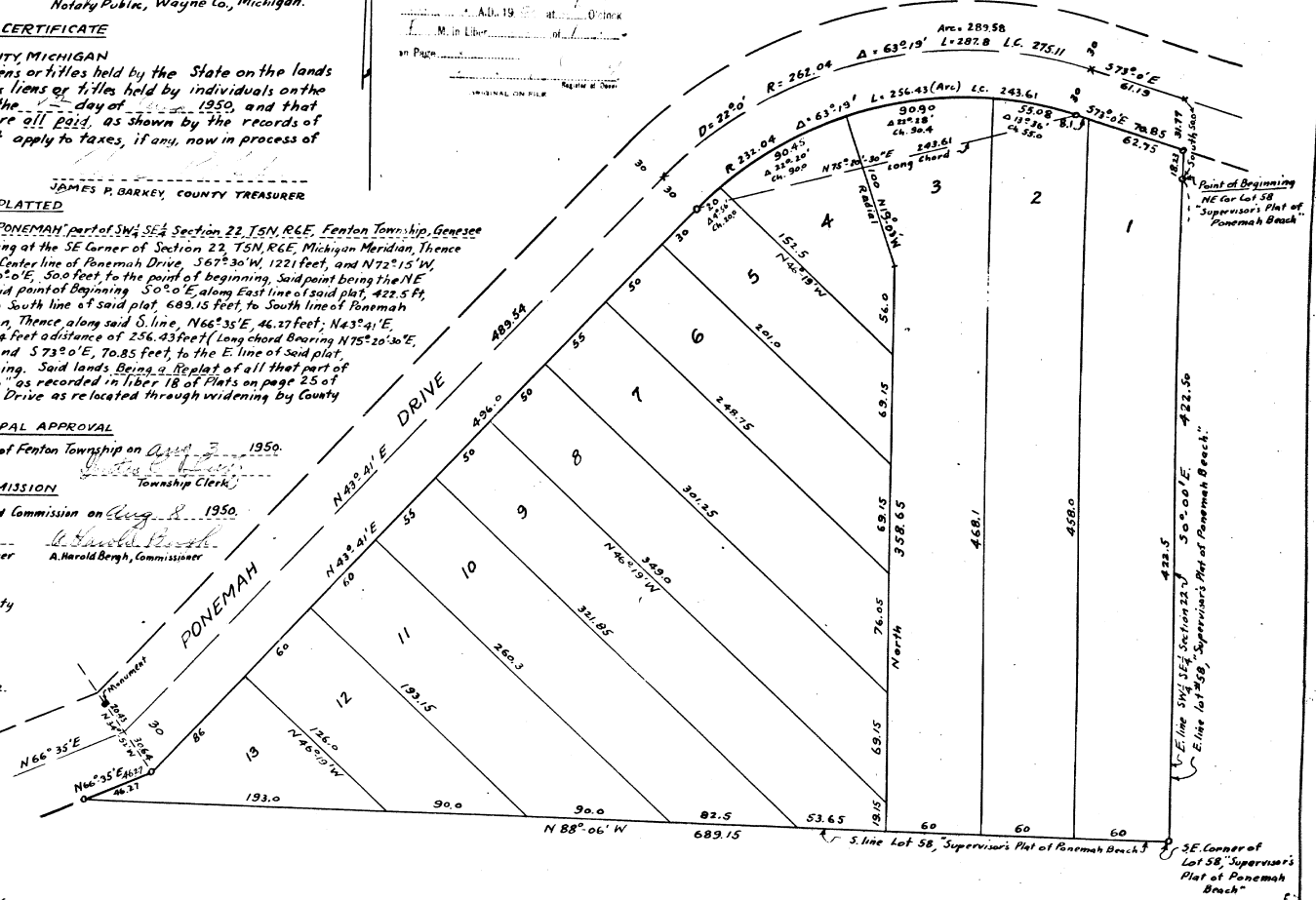
GEORGE G. DUNN, COUNTY CLERK.

SURVEYOR'S CERTIFICATE

I hereby certify that the plat hereon delineated is a correct one and that permanent metal monuments consisting of bars one-half inch in diameter and forty inches in length, encased in a concrete cylinder four inches in diameter and forty-eight inches in depth, have been placed at all points marked thus \odot at all angles in the boundaries of the lands platted and at all intersections of Roads with said boundaries as shown on said plat.

Gerald W. Smith
GERALD W. SMITH
Registered Land Surveyor #1531

COPY
Deputer's Office
County
Plat of
was Recorded this day of
A.D. 19 at O'clock
P. M. in Liber of
on Page
ORIGINAL ON FILE



Note: All dimensions are given in feet and decimals thereof. Curves are Actual Arc.