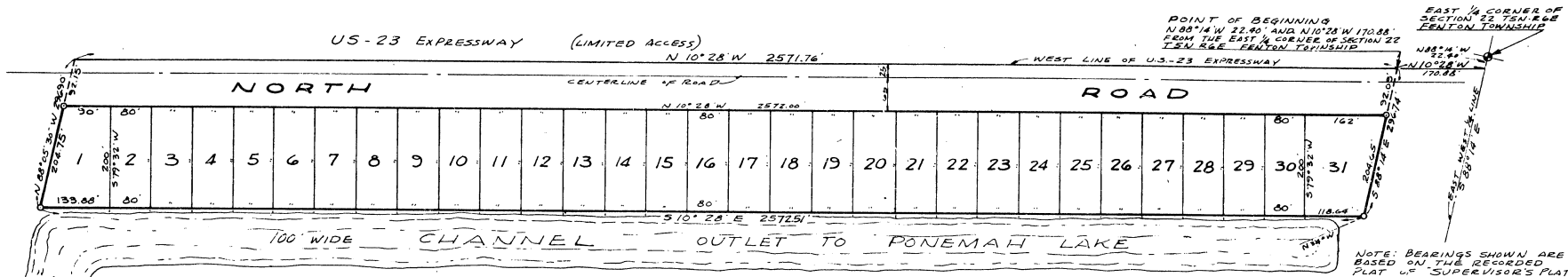


# PONEMAH GARDENS

PART OF THE NE 1/4 OF SECTION 22 T5N-R6E  
FENTON TOWNSHIP, GENESEE COUNTY, MICHIGAN.



ALL DIMENSIONS ARE IN FEET AND DECIMALS.  
ALL LOTS EXTEND TO THE WATER'S EDGE.



### DESCRIPTION OF LAND PLATTED

The land embraced in the annexed plat of "PONEMAH GARDENS," part of the NE 1/4 of Section 22, T5N-R6E, Fenton Township, Genesee County, Michigan, is described as follows: Beginning at a point on the west right-of-way line for US-23 Expressway that lies N 88° 14' W, 22.40 feet and N 10° 28' W, 170.88 feet from the East 1/4 corner of said Section 22; thence N 10° 28' W, 2571.76 feet; thence S 10° 28' E, 296.90 feet; thence S 10° 28' E, 2572.51 feet; thence S 88° 14' E, 296.74 feet to the point of beginning. This plat contains 31 numbered lots.

### DEDICATION

KNOW ALL MEN BY THESE PRESENTS, that we, Weston Koan and Glennola Koan, his wife, as proprietors, have caused the land embraced in the annexed plat to be surveyed, laid out and platted, to be known as "PONEMAH GARDENS," part of the NE 1/4 of Section 22, T5N-R6E, Fenton Township, Genesee County, Michigan, and that the road as shown on said plat is hereby dedicated to the use of the public.

Witnesses:

Sheldon B. Brown  
SHELDON B. BROWN  
Bernard Henderson  
BERNARD HENDERSON

Weston Koan  
Weston Koan  
2405 North Road  
Fenton, Michigan

Glennola Koan  
Glennola Koan  
2405 North Road  
Fenton, Michigan

### ACKNOWLEDGEMENT

STATE OF MICHIGAN )  
County of Genesee ) ss'

On this 21 day of May, 1965, before me, a notary public in and for said county personally appeared the above named Weston Koan and Glennola Koan, his wife, known to me to be the persons who executed the above dedication and who acknowledged the same to be their free act and deed.

My commission expires July 27, 1965.

Carl H. Carlson  
CARL H. CARLSON  
Notary Public, Genesee County, Michigan

### CERTIFICATE OF MUNICIPAL APPROVAL

This plat was approved by the Township Board of the Township of Fenton at a meeting held on the 24 day of March, 1965 and the width of lots conforms with the requirements of Section 30, Act 172 of 1929, as amended, and is in compliance with the provisions of Section 19a of the Plat Act as added by Act 150 of the Public Act of 1961.

COPY  
Register's Office  
Genesee County, } S.S.

Plat of Ponemah Gardens

was Recorded this 30 day of

July, A. D., 1965 at 11:00 o'clock

AM, in Liber 411 of 254

on Page 32

Richard E. Gomez  
Register of Deeds

ORIGINAL ON FILE

Howard E. Hill  
APPROVED July 21, 1965

MICHIGAN STATE HIGHWAY COMMISSION

Howard E. Hill

HOWARD E. HILL  
State Highway Director

### COUNTY TREASURER'S CERTIFICATE

Office of the County Treasurer, Genesee County, Michigan:

I hereby certify that there are no tax liens or titles held by the state on the lands described hereon, and that there are no tax liens or titles held by individuals on said lands, for the five years preceding the 20th day of April, 1965, and that the taxes for said period of five years are all paid as shown by the records of this office. This certificate does not apply to taxes if any now in process of collection by city, village or township collection officers.

James P. Barkey  
James P. Barkey  
County Treasurer

### CERTIFICATE OF APPROVAL BY BOARD OF COUNTY ROAD COMMISSIONERS

This plat has been examined and was approved on the 20th day of April, 1965, by the Genesee County Board of Road Commissioners.

George Slaght Comm. C. M. Bullard Comm. L. R. Lang Comm.

### CERTIFICATE OF APPROVAL BY COUNTY BOARD

This plat was approved by the Genesee County Plat Board on the 13 day of May, 1965.

Anthony Ragnone Drain Commissioner  
Earl M. Smith Register of Deeds  
James P. Barkey County Treasurer  
George G. Dunn County Clerk

### SURVEYOR'S CERTIFICATE

I hereby certify that the plat hereon delineated is a correct one and that permanent metal monuments consisting of iron bars not less than one-half inch in diameter and 36 inches in length encased in a concrete cylinder at least 4 inches in diameter and 36 inches in length have been placed at all points marked thus (O) as thereon shown at all angles in the boundaries of the land platted, at all the intersections of roads and at the intersections of roads with the boundaries of the land platted as shown on said plat. PREPARED AND DRAFTED BY:

Carl H. Carlson  
CERTIFYING FEE PAID 7.10  
Carl H. Carlson  
Registered Civil Engineer and Registered  
Land Surveyor No. 9189  
2320 Lippincott Blvd., Flint, Michigan

I hereby certify this copy is a true copy of map or plat forwarded the Register of deeds for recording.  
Date July 27, 1965  
FILED IN AUDITOR GENERAL'S DEPT.  
Date August 3, 1965  
LEARNED AND APPROVED  
Date July 27, 1965  
Allison Green  
ALLISON GREEN  
ACTING AUDITOR GENERAL  
By Richard E. Gomez  
Richard E. Gomez - Plat Examiner

47703