

29.51

# PONEMAH LAKE SHORES

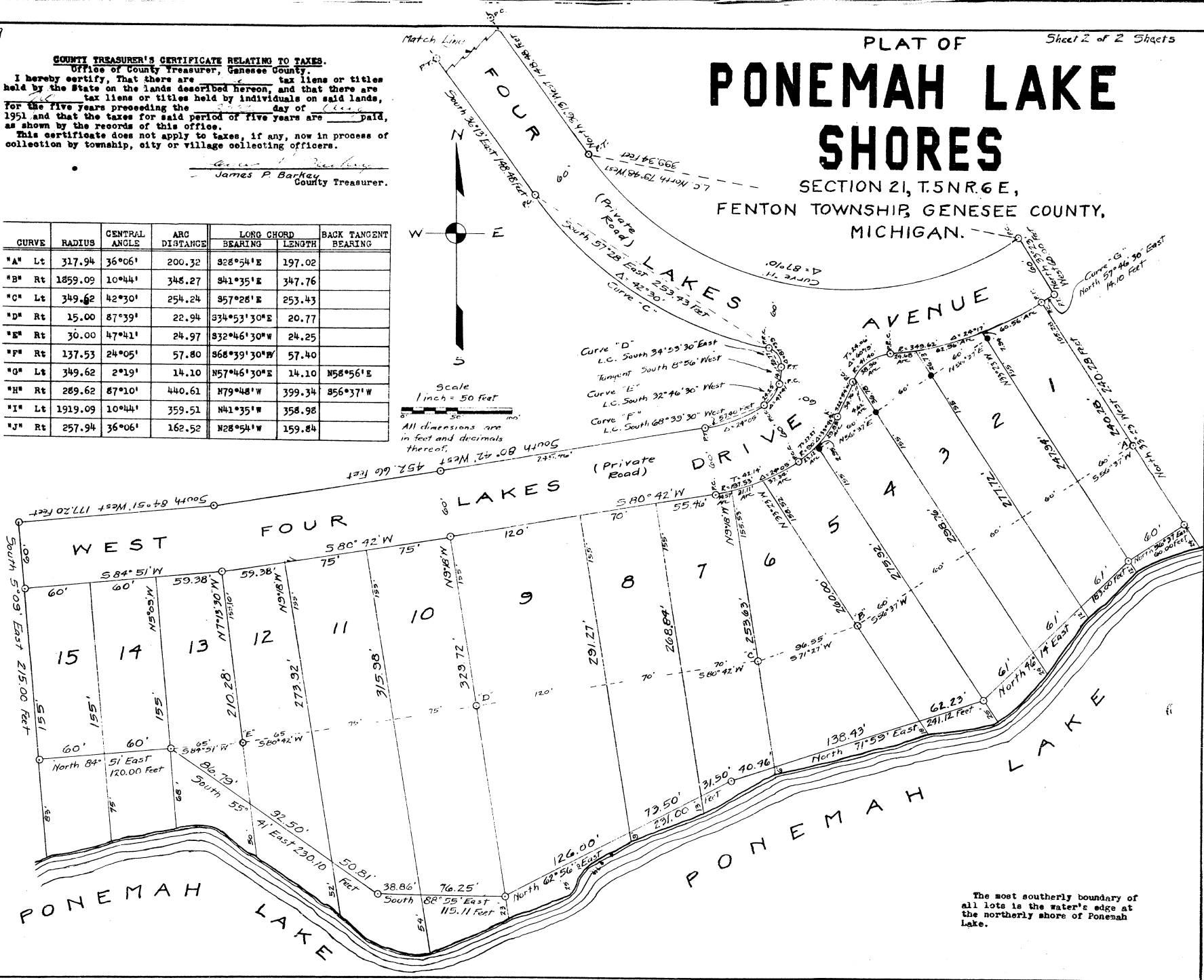
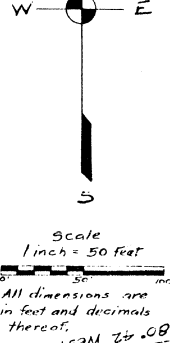
SECTION 21, T.5 N. R.6 E,  
FENTON TOWNSHIP, GENESEE COUNTY,  
MICHIGAN.

**COUNTY TREASURER'S CERTIFICATE RELATING TO TAXES.**  
Office of County Treasurer, Genesee County.

I hereby certify, That there are tax liens or titles held by the State on the lands described hereon, and that there are tax liens or titles held by individuals on said lands, for the five years preceding the day of 1951 and that the taxes for said period of five years are paid, as shown by the records of this office.  
This certificate does not apply to taxes, if any, now in process of collection by township, city or village collecting officers.

James P. Barkley  
County Treasurer.

CURVE	RADIUS	CENTRAL ANGLE	ARC DISTANCE	LONG CHORD		BACK TANGENT BEARING
				BEARING	LENGTH	
"A" Lt	317.94	36°06'	200.32	S28°54'E	197.02	
"B" Rt	1859.09	10°44'	348.27	S41°35'E	347.76	
"C" Lt	349.62	42°30'	254.24	S57°28'E	253.43	
"D" Rt	15.00	87°39'	22.94	S34°53'30"E	20.77	
"E" Rt	30.00	47°41'	24.97	S32°46'30"W	24.25	
"F" Rt	137.53	24°05'	57.80	S68°39'30"W	57.40	
"G" Lt	349.62	2°19'	14.10	N57°46'30"E	14.10	N58°56'E
"H" Rt	289.62	87°10'	440.61	N79°48'W	399.34	S56°37'W
"I" Lt	1919.09	10°44'	359.51	N41°35'W	358.98	
"J" Rt	257.94	36°06'	162.52	N28°54'W	159.84	

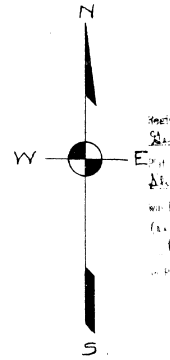


The most southerly boundary of all lots is the water's edge at the northerly shore of Ponemah Lake.

PLAT OF

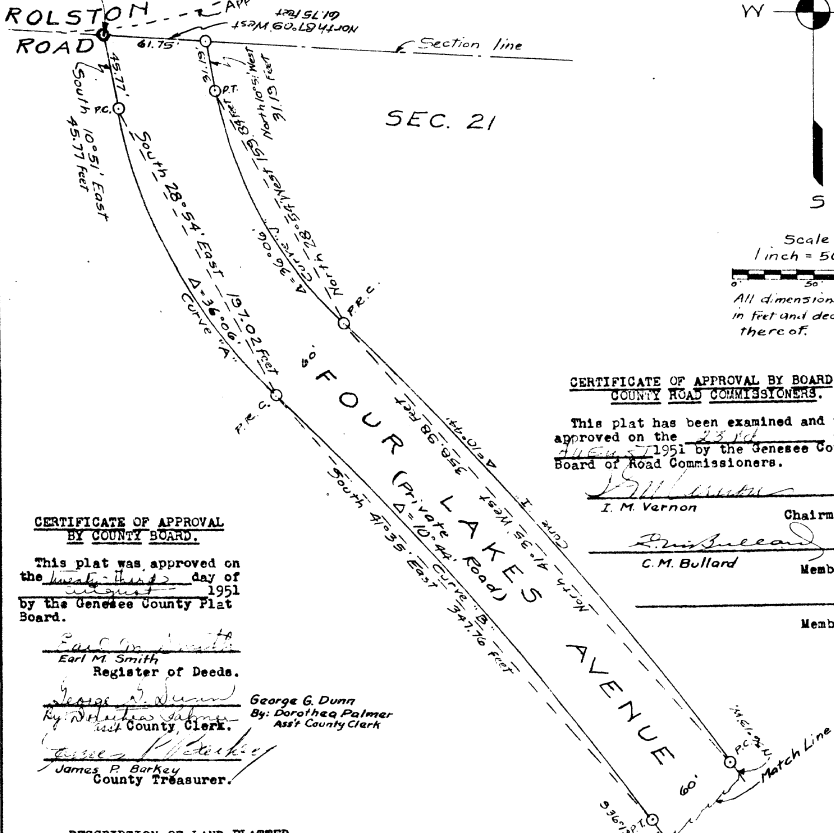
# PONEMAH LAKE SHORES

SECTION 21, T.5 N. R. 6 E.  
FENTON TOWNSHIP, GENESEE COUNTY,  
MICHIGAN.



### PLACE OF BEGINNING:

From the North-west corner of the North-east Quarter of Section 21, Township 5 North, Range 6 East, Genesee County, Michigan, South 87°09' East 897.80 feet along North section line



### CERTIFICATE OF APPROVAL BY BOARD OF COUNTY ROAD COMMISSIONERS.

This plat has been examined and was approved on the 23rd day of August 1951 by the Genesee County Board of Road Commissioners.

I. M. Varnon Chairman.  
C. M. Bullard Member.  
Member.

### CERTIFICATE OF APPROVAL BY COUNTY BOARD.

This plat was approved on the 23rd day of August 1951 by the Genesee County Plat Board.

Earl M. Smith Register of Deeds.  
George G. Dunn By: Dorothy Palmer Asst. County Clerk.  
James P. Barkley County Treasurer.

### DESCRIPTION OF LAND PLATTED.

The land embraced in the annexed plat of "PONEMAH LAKE SHORES", FENTON TOWNSHIP, GENESEE COUNTY, MICHIGAN is described as follows:  
From the North-west Corner of the North-east Quarter of Section 21, Township 5 North, Range 6 East, Genesee County, Michigan,  
South 87°09' East 897.80 feet along the North Section Line to the PLACE OF BEGINNING.  
THENCE from said PLACE OF BEGINNING South 10°51' East 45.77 feet;  
THENCE on a tangent curve to the left; -Radius 317.94 feet, -Central angle 36°06', -an arc distance of 200.32 feet, Long chord bearing South 28°54' East 197.02 feet;  
THENCE on a reversing curve to the right; -Radius 1859.09 feet, -Central angle 10°44', -an arc distance of 348.27 feet, -Long chord bearing South 41°35' East 347.76 feet;  
THENCE on a tangent curve to the left; -Radius 349.62 feet, -Central angle 42°30', -an arc distance of 254.24 feet, -Long chord bearing South 57°28' East 253.43 feet;  
THENCE on a reversing curve to the right; -Radius 15.00 feet, -Central angle 87°39', -an arc distance of 22.94 feet, -Long chord bearing South 34°53'30" East 20.77 feet;  
THENCE on a tangent curve to the right; -Radius 30.00 feet, -Central angle 47°41', -an arc distance of 24.97 feet, -Long chord bearing South 32°46'30" West 24.25 feet;  
THENCE on a compounding curve to the right; -Radius 137.53 feet, -Central angle 24°05', an arc distance of 57.80 feet, -Long chord bearing South 68°39'30" West 57.40 feet;  
THENCE South 80°41' West 452.66 feet; THENCE South 84°51' West 177.20 feet; THENCE South 6°09' East 215.00 feet; THENCE North 84°51' East 120.00 feet;  
THENCE South 55°41' East 230.10 feet; THENCE South 88°55' East 115.11 feet; THENCE North 82°56' East 231.00 feet; THENCE North 71°59' East 241.12 feet;  
THENCE North 46°14' East 183.00 feet; THENCE North 56°37' East 60.00 feet approximately parallel to the water's edge of Ponemah Lake;  
THENCE North 33°23' West 240.28 feet;  
THENCE on a curve to the left; -Radius 349.62 feet, from a tangent which bears North 58°56' East, -Central angle 2°19', -an arc distance of 14.10 feet, -Long chord bearing North 57°46'30" East 14.10 feet;  
THENCE North 33°23' West 60.00 feet;  
THENCE on a curve to the right; -Radius 289.62 feet, from a tangent which bears South 56°37' West, Central angle 87°10', an arc distance of 440.61 feet, -Long chord bearing North 79°48' West 399.34 feet;  
THENCE North 36°13' West 148.48 feet;  
THENCE on a tangent curve to the left; -Radius 1919.09 feet, -Central angle 10°44', -an arc distance of 359.51 feet, -Long chord bearing North 41°35' West 358.98 feet;  
THENCE on a reversing curve to the right; -Radius 257.94 feet, -Central angle 36°06', -an arc distance of 162.52 feet, -Long chord bearing North 28°54' West 159.84 feet;  
THENCE North 10°51' West 31.19 feet to the Section Line;  
THENCE North 87°09' West 61.75 feet to the PLACE OF BEGINNING, and also the land bounded by the easterly line of platted lot 1, the northerly shore of Ponemah Lake, the westerly line of platted lot 15, and the above described lands;  
BEING part of the North-east Quarter of Section 21, Town 5 North, Range 6 East, Genesee County, Michigan.

Surveyor's Office  
Genesee County, Mich.  
Edna M. McFarlan (L.S.)  
Harold E. McFarlan  
Platted August 23, 1951  
Notary Public for Genesee County, Michigan  
My Commission expires FEB. 9, 1954

### DEDICATION.

KNOW ALL MEN BY THESE PRESENTS, That we, Harold J. McFarlan as proprietor, and Edna M. McFarlan, his wife, and Robert B. McFarlan as proprietor, and Catherine M. McFarlan, his wife, have caused the land embraced in the annexed plat to be surveyed, laid out and platted, to be known as PONEMAH LAKE SHORES, and that the streets as shown on said plat are hereby dedicated to the use of all present or future owners of lots in this plat or of any parcel of land in North-east Quarter of Section 21, West half of North-west Quarter of Section 22 and West half of South-west Quarter of Section 22, North of Ponemah Lake.

Signed and Sealed in Presence of

Harold J. McFarlan (L.S.)  
Edna M. McFarlan (L.S.)  
Robert B. McFarlan (L.S.)  
Catherine M. McFarlan (L.S.)  
Louis H. French Notary Public Genesee Co., Mich.  
John Bodek  
John Bodek

STATE OF MICHIGAN, ) ss.  
County of Genesee

On this 20th day of August 1951 before me, a Notary Public in and for said county, personally came the above named Harold J. McFarlan and Edna M. McFarlan, his wife, and Robert B. McFarlan and Catherine M. McFarlan, his wife, known to me to be the persons who executed the above dedication, and acknowledged the same to be their free act and deed.

Louis H. French  
Notary Public Genesee Co., Mich.  
My Commission expires FEB. 9, 1954

Section 21, T.5 N. R. 6 E.  
Fenton Township, Genesee County,  
Michigan

I HEREBY CERTIFY THAT THIS COPY IS A TRUE COPY OF THE MAP OR PLAT FORWARDED TO THE REGISTER OF DEEDS FOR RECORDING.

Examined and Approved  
Harold J. McFarlan  
Notary Public

Examined and Approved  
Harold J. McFarlan  
Notary Public

FILED IN AUDITOR GENERAL'S DEPT.  
August 29, 1951

Harold J. McFarlan  
Notary Public

### CERTIFICATE OF MUNICIPAL APPROVAL.

This plat was approved by the Township Board of the Township of Fenton at a meeting held August 2, 1951.

Gustav C. Lutz Clerk

### SURVEYOR'S CERTIFICATE.

I hereby certify that the plat hereon delineated is a correct one and that permanent metal monuments consisting of bars not less than one-half inch in diameter and 48 inches in length, or shorter bars of not less than one-half inch in diameter lapped over each other at least 6 inches with an overall length of not less than 48 inches, encased in a concrete cylinder at least 4 inches in diameter and 48 inches in depth have been placed at points marked thus (O) as thereon shown at all angle points in the boundaries of the lands platted, at all angle points in the meander traverse near the lake shore, at all points of tangency or curvature, at the intersections of streets with the boundaries of the lands platted at points A, B, C, D, E, F, and G.

Iron pipes have been placed at points marked thus (O).  
Robert B. McFarlan  
Registered Professional Engineer  
No. 582