

CERTIFICATE OF MUNICIPAL APPROVAL.

This plat was approved by the Township Board of the Township of Fenton at a meeting held, July 14, 1952.

Gustav C. Lutz
Clerk

CERTIFICATE OF APPROVAL BY BOARD OF COUNTY ROAD COMMISSIONERS

This plat has been examined and was approved on the 17th day of August, 1952

by the Genesee County Board of Road Commissioners.

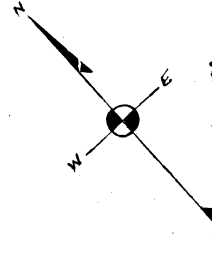
A. Harold Bergh
A. Harold Bergh, Chairman

C.M. Bullard
C.M. Bullard, Member

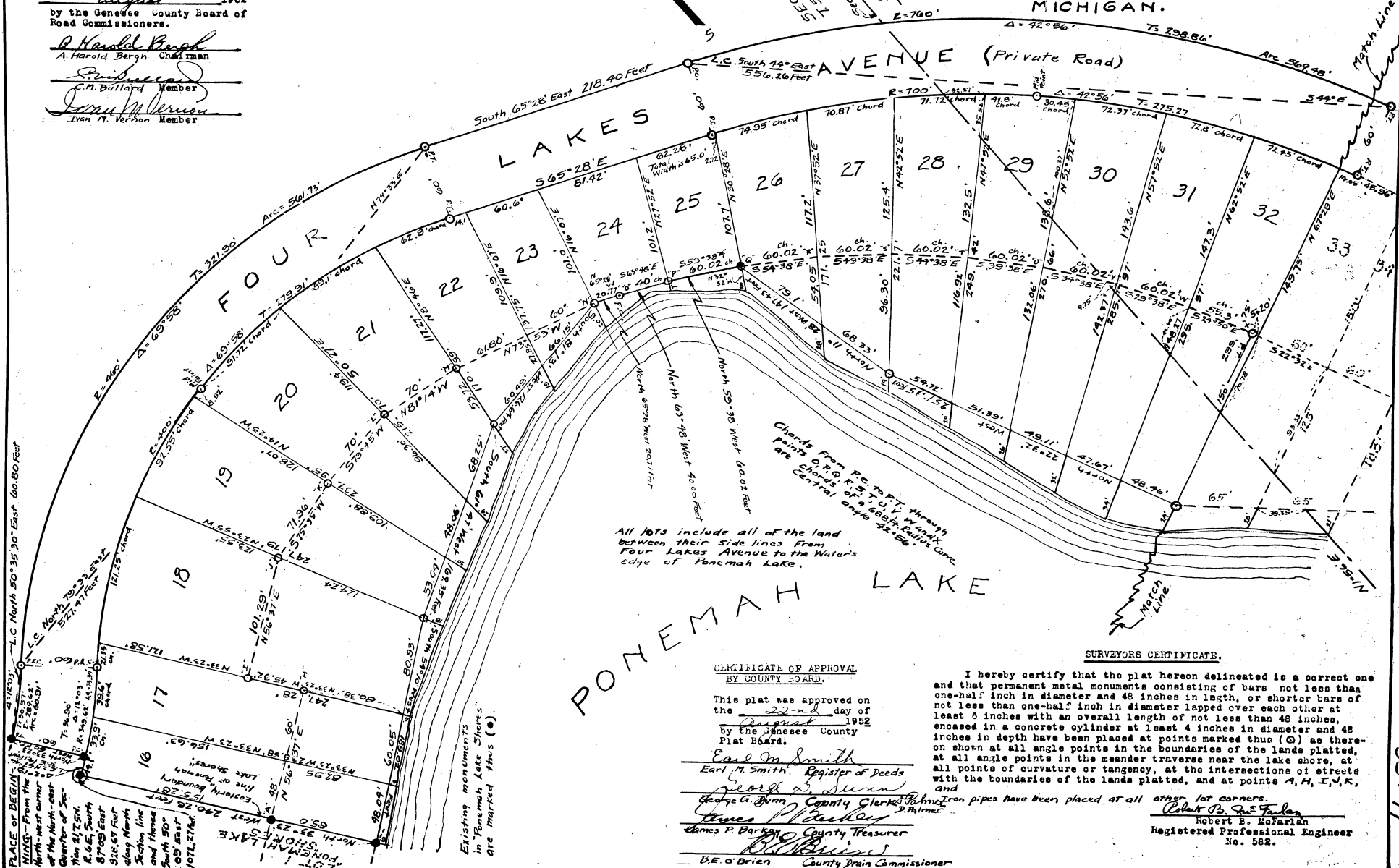
Ivan H. Verbon
Ivan H. Verbon, Member

PONEMAH LAKE SHORES NO. 1,

SECTIONS 21 + 22, T.5N.R.6E.
FENTON TOWNSHIP, GENESEE COUNTY,
MICHIGAN.



SCALE 1 inch = 50 Feet
All dimensions are given in feet and decimals thereof.



All lots include all of the land between their side lines from Four Lakes Avenue to the Water's edge of Ponemah Lake.

CERTIFICATE OF APPROVAL BY COUNTY BOARD.

This plat was approved on the 22nd day of August, 1952 by the Genesee County Plat Board.

Earl M. Smith
Earl M. Smith, Register of Deeds
George A. Dunn
George A. Dunn, County Clerk
James P. Barkan
James P. Barkan, County Treasurer
D.E. O'Brien
D.E. O'Brien, County Drain Commissioner

SURVEYORS CERTIFICATE.

I hereby certify that the plat hereon delineated is a correct one and that permanent metal monuments consisting of bars not less than one-half inch in diameter and 48 inches in length, or shorter bars of not less than one-half inch in diameter lapped over each other at least 6 inches with an overall length of not less than 48 inches, encased in a concrete cylinder at least 4 inches in diameter and 48 inches in depth have been placed at points marked thus (G) as thereon shown at all angle points in the boundaries of the lands plated, at all points in the meander traverse near the lake shore, at all angle points of tangency, at the intersections of streets with the boundaries of the lands plated, and at points A, H, I, N, K, and other lot corners.

Robert E. McFarlan
Robert E. McFarlan
Registered Professional Engineer
No. 582.

332-17

PONEMAH LAKE SHORES No. 1,

SECTIONS 21 & 22, T. 5N.R. 6E.
FENTON TOWNSHIP, GENESEE COUNTY,
MICHIGAN.

FILED IN AUDITOR GENERAL'S DEPT.
August 2, 1952
Mayme Jewell Purdy
DEPUTY AUDITOR GENERAL
Examined and Approved
August 26, 1952
Mayme Jewell Purdy
Deputy Auditor General

COPY
Register's Office
Genesee County, ss.
Plat of Ponemah Lake Shores
No. 1 - Section 21 & 22
was Recorded this 27th day of
August A.D., 1952 at 10 o'clock
A. M. in Liber 23 of 6 state
on Page 65 & 66
Marie L. French
Register of Deeds

HEREBY CERTIFY THAT THIS COPY IS
A TRUE COPY OF THE MAP OR PLAT
FORWARDED THE REGISTER OF DEEDS
FOR RECORDING.

COMPARED August 26, 1952
Mayme Jewell Purdy
DEPUTY AUDITOR GENERAL

COUNTY TREASURER'S CERTIFICATE RELATING TO TAXES

Office of County Treasurer, Genesee County.
I hereby certify that there are no tax liens or titles
held by the State on the lands described hereon, and that
there are no tax liens or titles held by individuals
on said lands, for the five years preceding the 27th day
of August 1952 and that the taxes for said period
of five years are paid as shown by the records
of this office.

This certificate does not apply to taxes, if any, now
in process of collection by township, city, or village collect-
officers.

James P. Barkey
JAMES P. BARKEY County Treasurer

DEDICATION.

KNOW ALL MEN BY THESE PRESENTS, That we, Harold J.
McFarlan as proprietor, and Edna M. McFarlan, his wife,
and Robert B. McFarlan as proprietor, and Catherine M.
McFarlan, his wife, have caused the land embraced in
the annexed plat to be surveyed, laid out, and platted,
to be known as "PONEMAH LAKE SHORES No. 1", Sections
21 and 22, T. 5N.R. 6E, Fenton Township, Genesee County,
Michigan, and that the streets as shown on said are hereby
dedicated to the use of all present or future owners of
lots in this plat.

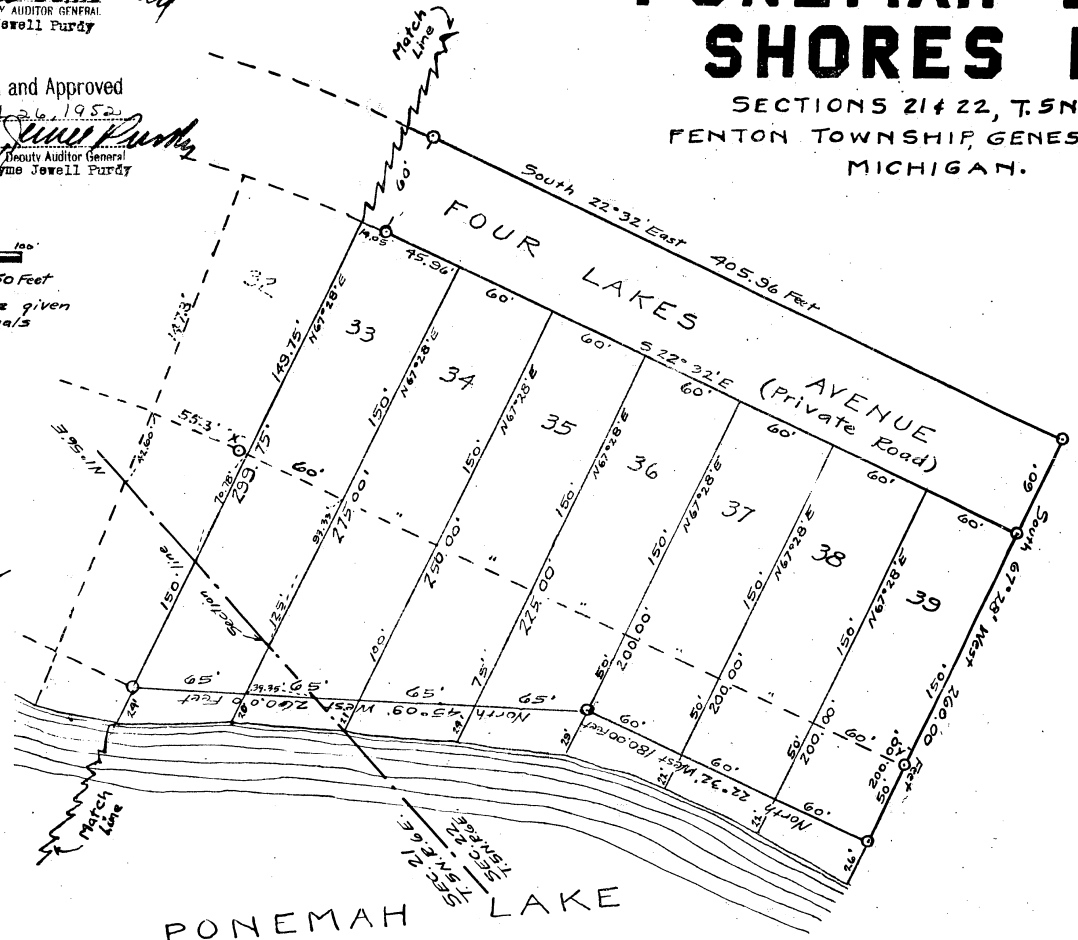
Signed and Sealed in Presence Of

Jean C. McFarlan } *Harold J. McFarlan* (L.S.)
JEAN C. MCFARLAN } Harold J. McFarlan
Joyce A. McFarlan } *Edna M. McFarlan* (L.S.)
JOYCE A. MCFARLAN } Edna M. McFarlan
Robert B. McFarlan } *Robert B. McFarlan* (L.S.)
ROBERT B. MCFARLAN } Robert B. McFarlan
Catherine M. McFarlan } *Catherine M. McFarlan* (L.S.)
CATHERINE M. MCFARLAN } Catherine M. McFarlan

STATE OF MICHIGAN }
County of Genesee } ss.

On this 13th day of AUGUST 1952,
before me, a Notary Public in and for said county,
personally came the above named Harold J. McFarlan and
Edna M. McFarlan, his wife, and Robert B. McFarlan and
Catherine M. McFarlan, his wife, known to me to be the
persons who executed the above dedication, and acknowledg-
ed the same to be their free act and deed.

Louis H. French
LOUIS H. FRENCH
Notary Public Genesee Co., Mich.
My Commission expires Feb 9, 1954



DESCRIPTION OF LAND PLATTED.

The land embraced in the annexed plat of "PONEMAH LAKE SHORES No. 1",
FENTON TOWNSHIP, GENESEE COUNTY, MICHIGAN is described as follows:-
From the North-west corner of the North-east Quarter of Section
21, Township 5 North, Range 6 East, Genesee County, Michigan, -
South 87°09' East 928.37 feet along the North Section Line and thence
South 50°09' East 1072.27 feet to a concrete monument at the North-
east corner of lot 1, "Ponemah Lake Shores" (at the Southerly line
of Four Lakes Avenue) as place of beginning.
THENCE from said place of beginning
on a curve to the left from a tangent which bears North 56°56' East, -
Radius 349.53 feet, - Central angle 2°19', - Arc distance 14.10 feet, -
Long chord bearing North 57°46'30" East 14.10 feet, -
THENCE North 33°23' West 60.00 feet along easterly end of Four Lakes
Avenue;
THENCE on a curve to the left from a tangent which bears North 56°37' East, -
Radius 289.62 feet, - Central angle 12°03', - Arc distance 66.91 feet, -
Long chord bearing North 50°35'30" East 60.80 feet;
THENCE on a reversing curve to the right, -
Radius 460.00 feet, - Central angle 99°58', - Arc distance 561.73 feet, -
Long chord bearing North 79°33' East 527.47 feet;
THENCE South 65°28' East 218.40 feet;
THENCE on a tangent curve to the right, -
Radius 769.00 feet, - Central angle 42°55', - Arc distance 569.48 feet, -
Long chord bearing South 44°00' East 556.25 feet;
THENCE South 22°32' East 405.96 feet;
THENCE South 67°28' West 260.00 feet to point near shore of Ponemah
Lake;

THENCE (beginning shore traverse) North 22°32' West 180.00 feet;
THENCE North 45°09' West 250.00 feet;
THENCE North 22°32' West 251.35 feet;
THENCE North 11°28' West 147.43 feet to the South-west corner of
lot 25 (of this plat);
THENCE North 59°38' West 60.02 feet; THENCE North 53°49' West 40.00
feet; THENCE North 65°28' West 20.77 feet to the South-West
corner of lot 29 (of this plat);
THENCE South 81°13' West 126.64 feet;
THENCE South 61°47' West 169.35 feet;
THENCE South 54°10' West 169.02 feet to the most southerly mon-
ument on easterly line of lot 1, "Ponemah Lake Shores";
THENCE North 33°23' West 240.28 feet along easterly boundary line
of "Ponemah Lake Shores" to place of beginning.
ALSO the land bounded on the west by easterly line of "Ponemah
Lake Shores," on the South by the Southerly line of platted lot 39
and extending from the shores of Ponemah Lake to the above des-
cribed lands;
BEING parts of the North-east Quarter of Section 21 and of the West
Half of the North-west Quarter of Section 22, Township 5 North,
Range 6 East, Genesee County, Michigan.

33277