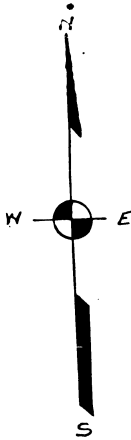


# PONEMAH LAKE SHORES NO. 2.

SECTION 22, T.5N.R.6E,  
FENTON TOWNSHIP, GENESEE COUNTY,  
MICHIGAN.

PLACE OF BEGINNING:  
FROM the North-West Corner of  
the North-east Quarter of Sec-  
tion 21, Township 5 North, Range  
6 East, Genesee County, Michigan,  
S 87° 09' E 928.67 Feet along the  
North Section line and thence  
S 50° 09' E 1072.27 Feet to a  
Concrete monument and  
thence S 62° 20' E  
1451.21 Feet.

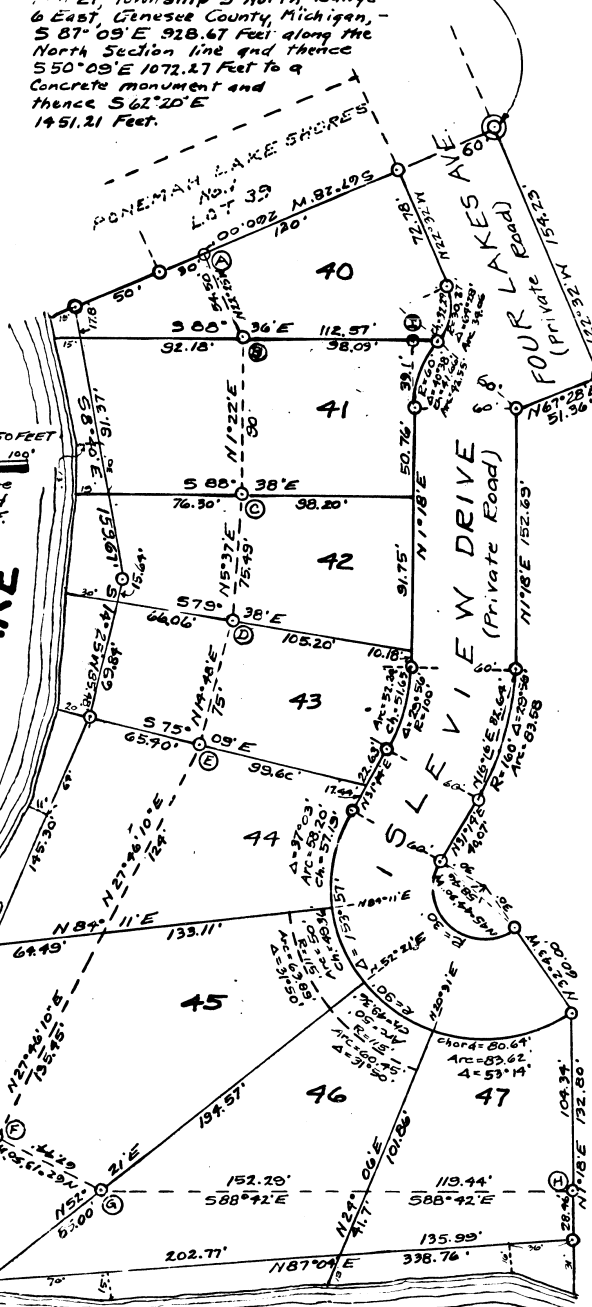


Scale 1 INCH = 50 FEET

All dimensions are  
given in feet and  
decimals thereof.

PONEMAH LAKE

PONEMAH LAKE



REGISTRAR'S OFFICE  
Genesee County  
Plat of Ponemah Lake  
Shores No. 2  
was Recorded this 17th day of  
July A.D. 1959 at 10:47 o'clock  
P.M. in Liber 35 of plate  
No. 2  
James P. Barkley  
County Treasurer

I hereby certify this copy is a true copy of the  
original filed for record in the Register of Deeds for  
Genesee County, Michigan.  
Notary Public, Livingston  
Douglas N. Parmenter  
My Commission Expires Oct. 2, 1964

CERTIFICATE OF MUNICIPAL APPROVAL  
This plat was approved by the Township Board of  
Fenton Township, at a meeting held on the  
day of July 1959.

CERTIFICATE OF APPROVAL BY COUNTY BOARD.  
This plat was approved on the 17th day of  
1959.

CERTIFICATE OF APPROVAL BY BOARD OF COUNTY  
ROAD COMMISSIONERS  
This plat has been examined and was approved on  
the 17th day of July 1959  
by the GENESEE COUNTY BOARD OF ROAD COMMISSION-  
ERS.

CERTIFYING FEE PAID 82.90  
James P. Barkley  
COUNTY TREASURER

DEDICATION.  
KNOW ALL MEN BY THESE PRESENTS, That we, Harold J. McFarlan, as proprietor, and Edna M. McFarlan, his wife, and Robert B. McFarlan, a widower, as Proprietor, have caused the land embraced in the annexed plat to be surveyed, laid out, and platted to be known as "PONEMAH LAKE SHORES No. 2", Section 22, T.5 N., R.6 E., Fenton Township, Genesee County, Michigan, and that the streets as shown on said plat are hereby dedicated to the use of all present or future owners of lots in this plat.  
SIGNED AND SEALED IN PRESENCE OF  
Harold J. McFarlan (L.S.)  
Edna M. McFarlan (L.S.)  
Robert B. McFarlan (L.S.)  
Douglas N. Parmenter  
Irene B. Parmenter

ACKNOWLEDGEMENT.  
STATE OF MICHIGAN  
COUNTY OF GENESEE Livingston On this 16 day of August 1959, before me, a  
Notary Public, in and for said county, personally came the above named Harold J. Mc  
Farlan and Edna M. McFarlan, his wife, and Robert B. McFarlan, a widower, known to me  
to be the persons who executed the above dedication and acknowledged the same to be  
their free act and deed.  
DOUGLAS N. PARMENTER  
Notary Public, Livingston Co. Mich.  
My Commission Expires Oct. 2, 1964

DESCRIPTION OF LAND PLATTED.  
The land embraced in the annexed plat of "PONEMAH Lake Shores No. 2", Section 22, Fenton  
Township, Genesee County, Michigan is described as follows:- FROM the Northwest corner  
of the Northeast Quarter of Section 21, Township 5 North, Range 6 East, Genesee County,  
Michigan,-- S 87° 09' E 928.67 feet along the North Section line and thence S 50° 09'  
E 1072.27 feet to a concrete monument and thence S 62° 20' E 1451.21 feet to the inter-  
section of the Easterly side of Four Lakes Avenue with the Southerly boundary line of  
"PONEMAH LAKE SHORES No. 1" for place of beginning.  
THENCE FROM "SAID PLACE OF BEGINNING" S 67° 28' W 600.00 feet along Southerly line of  
said plat.  
THENCE S 8° 40' E 159.67 feet and thence S 14° 25' W 85.48 feet and thence S 23° 45' W  
300.40 feet and thence S 45° 38' 10" E 78.25 feet and thence N 87° 04' E 358.76 feet  
along traverse line near shore of Ponemah Lake.  
THENCE N 1° 18' E 132.80 feet. THENCE N 32° 45' W 60.00 feet.  
THENCE on a curve to the right,-- radius 30 feet,-- central angle 153° 57',--  
arc distance 80.51 feet,-- long chord bearing N 45° 44' 30" W 58.46 feet.  
THENCE N 31° 14' E 40.07 feet.  
THENCE on a curve to the left,-- radius 180 feet,-- central angle 29° 56' feet,--  
arc distance 83.58 feet,-- long chord bearing N 16° 16' E 82.64 feet.  
THENCE N 1° 18' E 152.69 feet. THENCE N 67° 28' E 51.36 feet. THENCE N 22° 32' W 154.25  
feet to place of beginning. ALSO all of the land lying between monumented traverse  
line near the shore and the water's edge of Ponemah Lake, thus making all lots extend  
to the water's edge.  
This plat contains eight lots numbered 40 to 47 inclusive.  
ALL BEING in the West Half of the Northwest Quarter of Section 22.

SURVEYOR'S CERTIFICATE.  
I hereby certify that the plat hereon delineated is a correct one and that permanent metal  
monuments consisting of bars one half inch in diameter and at least 36 inches long encased  
in a concrete cylinder 4 inches in diameter and at least 36 inches in depth have been  
placed at all points marked thus (X) as thereon shown at all angle points in the boundary  
line including traverse line near shore, at all points of curvature and tangency, at angle  
points of streets, at intersections of streets with boundaries of land platted, and at point  
"B", "C", "D", "E", "F", "G", and "H" on set-back reference line and also at point "I".  
Robert B. McFarlan  
Robert B. McFarlan-- Registered Professional Engineer ( Civil )  
and Land Surveyor No. 582

COUNTY TREASURER'S CERTIFICATE RELATING TO TAXES.  
OFFICE OF THE COUNTY TREASURER, Genesee County, Michigan.  
I hereby certify that there are no tax liens or titles held by the State on  
the lands described hereon, and that there are no tax liens or titles held by individ-  
uals on said lands for the five years preceding the 17th day of July 1959  
and that the taxes for said period of five years are paid as shown by the records  
of this office.  
This certificate does not apply to taxes, if any, now in process of collection by  
township, city, or village collection officers.

James P. Barkley  
COUNTY TREASURER

41955