

DESCRIPTION OF LAND PLATTED

The land embraced in the annexed plat of "SHOREACRES HOMESITES #1", part of the W 1/2 NW 1/4 Section 11, T5N R6E, Fenton Township, Genesee County, Michigan, and a replat of Lots 121 and the West 40 feet of Lot 117 of Shoreacres Homesites as recorded, Genesee County, Michigan, is described as follows: Beginning at a point in the West line of said Section 11 that is N 0° 24' W 1136.85 feet from the W 1/2 corner of said Section 11, thence N 0° 24' W 622.21 feet, thence N 89° 41' E 310.17 feet, thence S 2° 55' W 94.07 feet, thence S 33° 28' E 107.83 feet, thence S 19° 34' W 115.0 feet, thence S 42° 02' E 158.86 feet, thence S 19° 14' E 100.0 feet, thence S 3° 34' E 90.0 feet, thence S 86° 24' W 40 feet, thence N 3° 36' W 90.0 feet, thence S 86° 24' W 150 feet, thence S 3° 36' E 90.0 feet, thence S 84° 24' W 50 feet, thence S 3° 36' W 90.0 feet, thence S 84° 24' W 100.0 feet, thence S 3° 36' W 90.0 feet, thence S 84° 24' W 127.42 feet to the place of beginning. This plat contains nine lots and one outlet "A". Lot 132 and the North 34.06 feet of Lot 131 extend to the water's edge.

DEDICATION

KNOW ALL MEN BY THESE PRESENTS, that I, Ruth Crane, as proprietor, have caused the land embraced in the annexed plat to be surveyed, laid out and platted, to be known as "SHOREACRES HOMESITES #1" part of the W 1/2 NW 1/4 Section 11, T5N R6E, Fenton Township, Genesee County, Michigan, and a replat of Lots 121 and the West 40 feet of Lot 117 of Shoreacres Homesites as recorded, Genesee County, Michigan, and that the road as shown on said plat is hereby dedicated to the use of the public.

Witnesses: John C. Mackie, Ruth Crane, Darwin C. Hasbue

STATE OF MICHIGAN ss County of Genesee)

On this 26th day of December 1955, before me, a notary public in and for said county, personally appeared the above named Ruth Crane, known to me to be the person who executed the above dedication, and who acknowledged the same to be her free act and deed.

My commission expires November 30, 1958

John C. Mackie, Notary Public, Genesee County

CERTIFICATE OF MUNICIPAL APPROVAL

This plat was approved by the Township Board of the Township of Fenton, at a meeting held on the 18th day of Aug 1955.

G. C. Lutz, Township Clerk

CERTIFICATE OF APPROVAL BY COUNTY BOARD

This plat was approved on the 4 day of January 1956.

Earl M. Smith-Register of Deeds, James P. Barkey-County Treasurer, George G. Dunn-County Clerk, Bernard E. O'Brien-Orsin Commissioner

COUNTY TREASURER'S CERTIFICATE RELATING TO TAXES

Office of the County Treasurer, Genesee County, Michigan

I hereby certify that there are no tax liens or titles held by the State on the lands described hereon, and that there are no tax liens or titles held by individuals on said lands for the five years preceding the 31st day of Dec 1955, and that the taxes for said period of five years are paid as shown by the records of this office.

James P. Barkey, County Treasurer

SURVEYOR'S CERTIFICATE

I hereby certify that the plat hereon delineated is a correct one and that permanent metal monuments consisting of bars not less than one-half inch in diameter and 36 inches in length, encased in a concrete cylinder four inches in diameter and 36 inches in depth have been placed at all points marked thus "o" at all angles in the boundaries of the land platted, at all intersections of roads, and at all intersections of roads with the boundaries of the plat as shown on said plat.

John C. Mackie, R.L.S. #7434

COPY

Register's Office, Genesee County, ss. Plat of Shoreacres Homesites No. 1, Fenton Twp. was Recorded this 5th day of February A.D. 1956 at 10:10 o'clock A.M. in Liber 28 of Plats ORIGINAL ON FILE

I hereby certify this copy is a true copy of map or plat recorded in the Register's Office. Date: February 9, 1956

Vlad Targomski, Auditor General, Donald MacGregor, Plat Engineer

CERTIFICATE OF APPROVAL BY BOARD OF COUNTY ROAD COMMISSIONERS

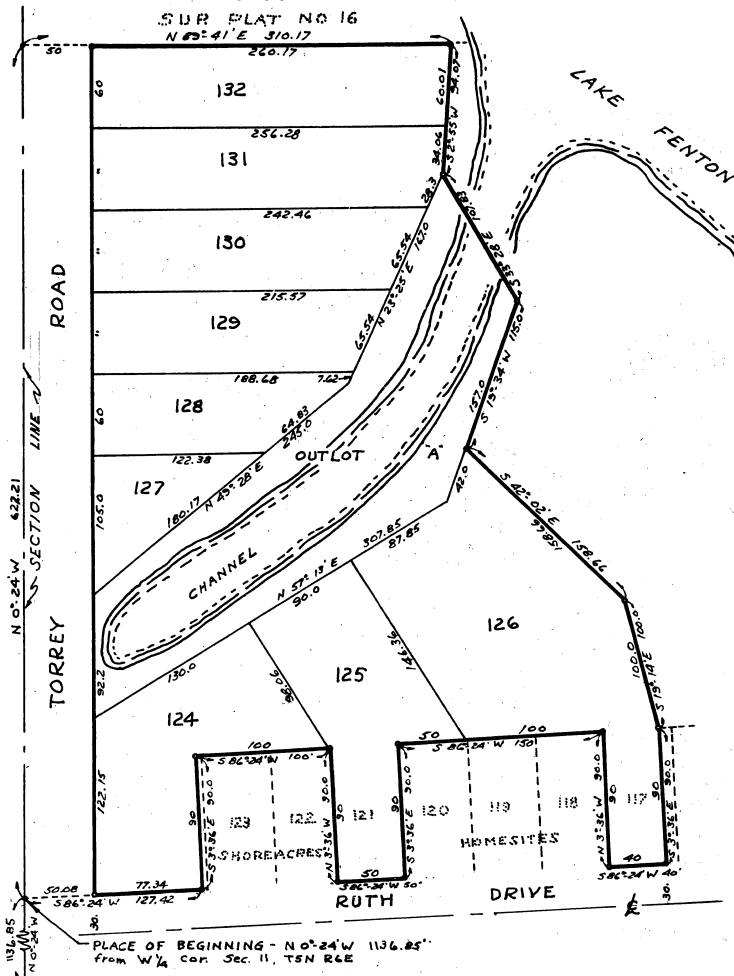
This plat has been examined and was approved on the 20 day of 1955 by the Genesee County Board of Road Commissioners.

C.M. Bullard-Commissioner, A. Harold Bergh-Commissioner, Rob't G. Stoddard-Commissioner

SHOREACRES HOMESITES NO. 1

PART OF THE W 1/2 NW 1/4 SECTION 11, T5N R6E, FENTON TWP. GENESSEE COUNTY, MICHIGAN, AND A REPLAT OF LOTS 121 & THE WEST 40' OF LOT 117 OF SHOREACRES HOMESITES AS RECORDED GENESSEE COUNTY, MICHIGAN

SCALE, 1"=60'



37334