

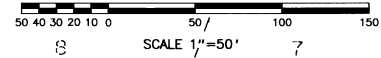
SILVER LANDINGS

A SUBDIVISION OF PART OF THE SE 1/4 OF SEC. 33, T5N, R6E
 FENTON TOWNSHIP, GENESEE COUNTY, MICHIGAN

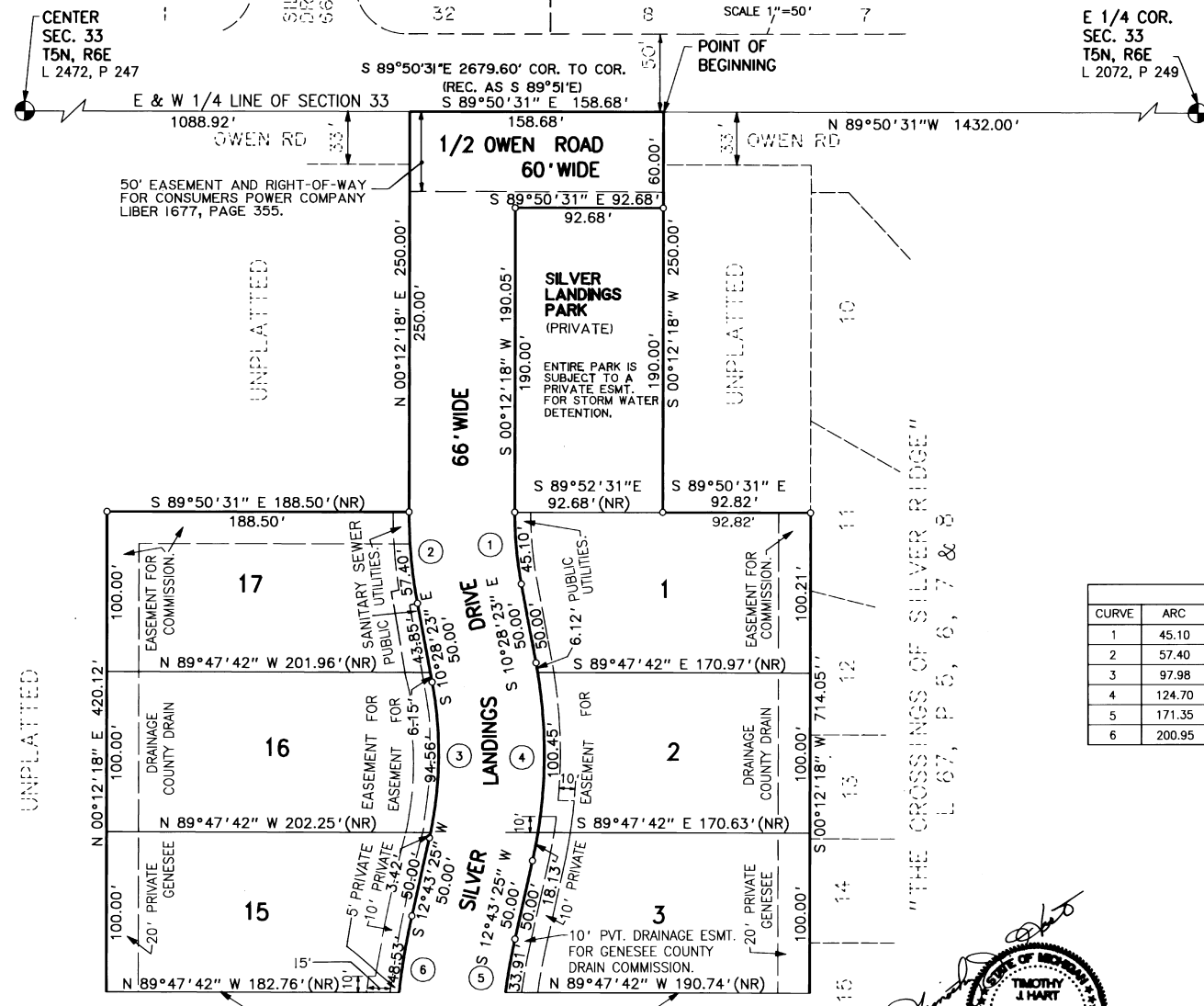
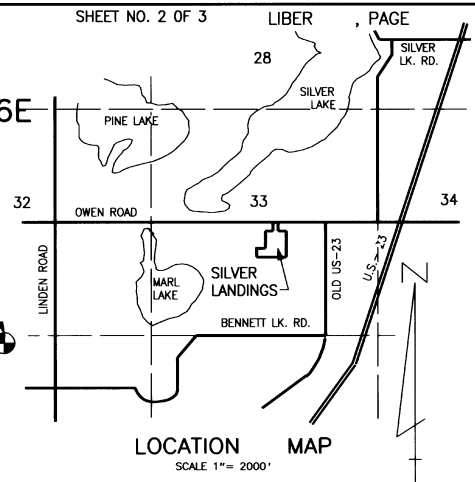
"SILVER SHORE"
 L 55,
 P 247

"SILVERSHORE"
 DRIVE
 56' WIDE
 PH 8, 12

"SILVER RIDGE" / SUB. NO. 1", L 63, P 24 & 25



E 1/4 COR.
 SEC. 33
 T5N, R6E
 L 2072, P 249



- ### LEGEND
1. ALL DIMENSIONS ARE GIVEN IN FEET AND INCHES.
 2. CURVILINEAR MEASUREMENTS ARE ARC DISTANCES.
 3. CONCRETE MONUMENTS HAVE BEEN PLACED AT ALL POINTS MARKED "o".
 4. CONCRETE MONUMENTS ARE STEEL BARS ONE-HALF (1/2) INCH IN DIAMETER AND THIRTY-SIX (36) INCHES IN LENGTH, ENCASED IN A CONCRETE CYLINDER FOUR (4) INCHES IN DIAMETER, AND THIRTY-SIX (36) INCHES IN LENGTH.
 5. LOT CORNERS HAVE BEEN MARKED WITH STEEL BARS ONE-HALF (1/2) INCH IN DIAMETER, AND EIGHTEEN (18) INCHES IN LENGTH.
 6. (R) INDICATES A RADIAL LINE (NR) INDICATES A RADIAL LINE.
 7. BEARINGS ARE BASED ON THE WEST LINE OF "THE CROSSINGS OF SILVER RIDGE" AS RECORDED IN LIBER 69 OF PLATS, PAGES 5, 6 & 7 GENESEE COUNTY RECORDS.
 8. "o" MONUMENT SET

CURVE CHART					
CURVE	ARC	RADIUS	CENTRAL ANGLE	CHORD	CHORD BEARING
1	45.10	242.00	10°40'41"	45.04	S 05°08'02"E
2	57.40	308.00	10°40'41"	57.32	S 05°08'02"E
3	97.98	242.00	23°11'48"	97.31	S 01°07'31"W
4	124.70	308.00	23°11'48"	123.85	S 01°07'31"W
5	171.35	382.00	25°42'00"	169.91	S 00°07'35"E
6	200.95	448.00	25°42'00"	199.27	S 00°07'35"E



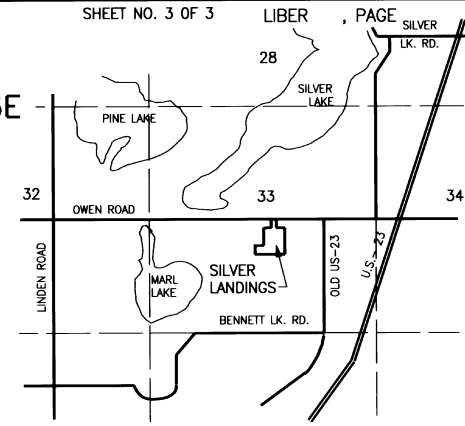
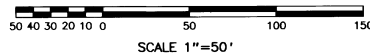
MATCH LINES
 SEE SHEET NO. 3

0-2

SILVER LANDINGS

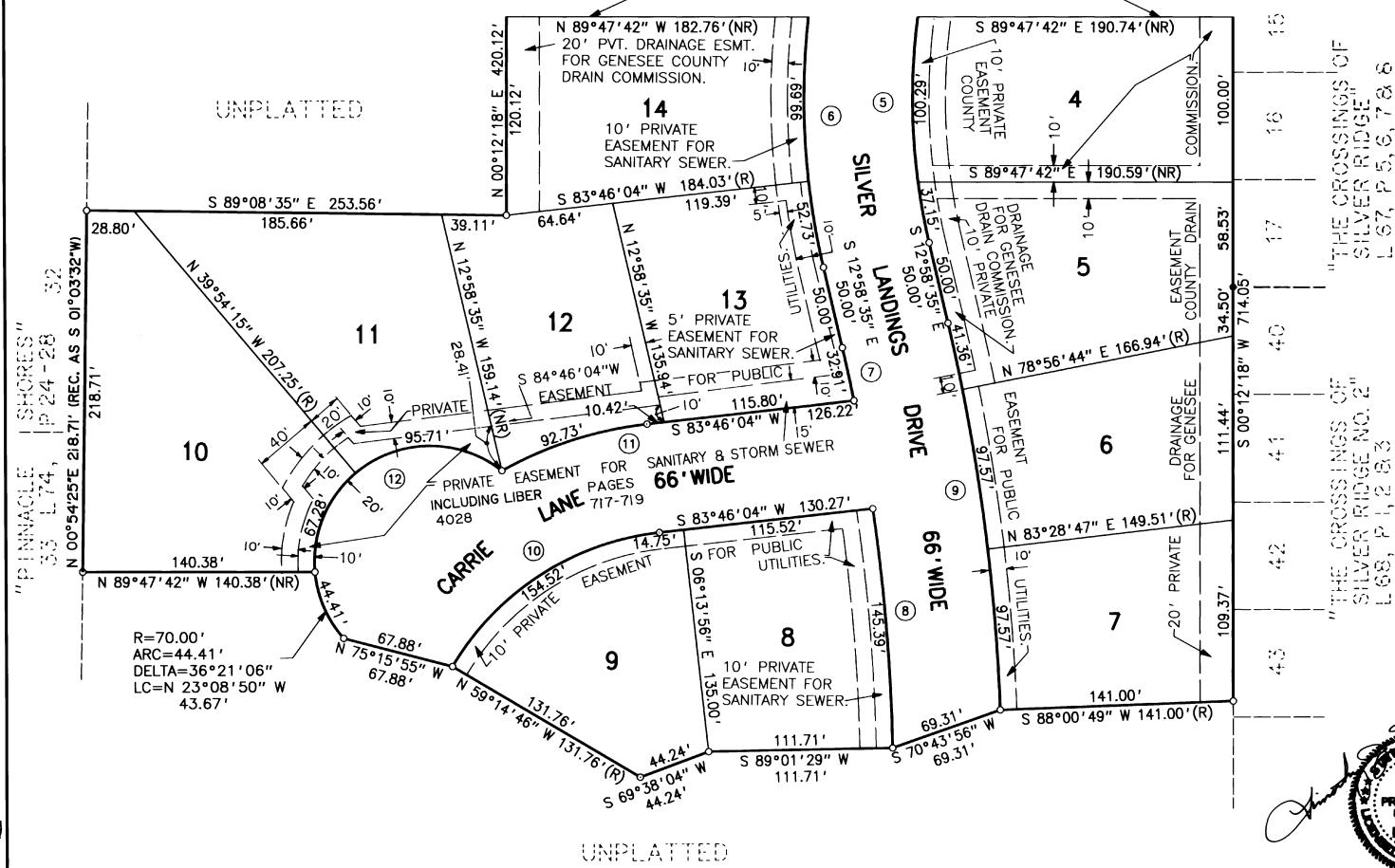
A SUBDIVISION OF PART OF THE SE 1/4 OF SEC. 33, T5N, R6E
FENTON TOWNSHIP, GENESEE COUNTY, MICHIGAN

CURVE CHART					
CURVE	ARC	RADIUS	CENTRAL ANGLE	CHORD	CHORD BEARING
5	171.35	382.00	25°42'00"	169.91	S 00°07'35"E
6	200.95	448.00	25°42'00"	199.27	S 00°07'35"E
7	32.91	1167.00	01°36'57"	32.91	N 12°10'06"W
8	169.43	1167.00	08°19'07"	169.28	S 03°57'15"E
9	283.66	1233.00	13°10'53"	183.04	S 06°23'09"E
10	154.52	167.00	53°00'50"	149.07	S 57°15'39"W
11	92.73	233.00	22°48'09"	92.12	S 72°21'59"W
12	207.40	70.00	169°45'26"	139.44	S 43°33'14"W



LOCATION MAP
SCALE 1"=2000'

MATCH LINES
SEE SHEET NO. 2



LEGEND

1. ALL DIMENSIONS ARE GIVEN IN FEET AND INCHES.
2. CURVILINEAR MEASUREMENTS ARE ARC DISTANCES.
3. CONCRETE MONUMENTS HAVE BEEN PLACED AT ALL POINTS MARKED "o".
4. CONCRETE MONUMENTS ARE STEEL BARS ONE-HALF (1/2) INCH IN DIAMETER AND THIRTY-SIX (36) INCHES IN LENGTH, ENCASED IN A CONCRETE CYLINDER FOUR (4) INCHES IN DIAMETER, AND THIRTY-SIX (36) INCHES IN LENGTH.
5. LOT CORNERS HAVE BEEN MARKED WITH STEEL BARS ONE-HALF (1/2) INCH IN DIAMETER, AND EIGHTEEN (18) INCHES IN LENGTH.
6. (R) INDICATES A RADIAL LINE.
7. (NR) INDICATES NOT A RADIAL LINE.
8. BEARINGS ARE BASED ON THE WEST LINE OF "THE CROSSINGS OF SILVER RIDGE" AS RECORDED IN LIBER 69 OF PLATS, PAGES 5, 6 & 7 GENESEE COUNTY RECORDS.
9. "o" MONUMENT SET
10. "•" MONUMENT FOUND

"THE CROSSINGS OF SILVER RIDGE" LIBER 67, P. 5, 6, 7 & 8
"THE CROSSINGS OF SILVER RIDGE NO. 2" LIBER 68, P. 1, 2 & 3



945

65551

SILVER LANDINGS

A SUBDIVISION OF PART OF THE SE 1/4 OF SEC. 33, T5N, R6E FENTON TWP., GENESEE CO., MICHIGAN

AND THE SOUTH LINE "SILVER RIDGE SUBDIVISION NO. 1"
AS RECORDED IN LIBER 63 OF PLATS, PAGES 24 AND 25
GENESEE COUNTY RECORDS.

SURVEYOR'S CERTIFICATE

I, TIMOTHY J. HART, SURVEYOR, CERTIFY:

THAT I HAVE SURVEYED, DIVIDED AND MAPPED THE LAND SHOWN ON THIS
PLAT, DESCRIBED AS FOLLOWS:

A SUBDIVISION OF PART OF THE SOUTHEAST 1/4 OF SECTION 33, T5N, R6E, FENTON
TOWNSHIP, GENESEE COUNTY, MICHIGAN, DESCRIBED AS BEGINNING AT A POINT ON
THE E & W 1/4 LINE OF SECTION 33, LOCATED N 89°50'31"W 1432.00 FT FROM THE
E 1/4 CORNER OF SECTION 33, T5N, R6E; TH S 00°12'18"W 250.00 FT; TH
S 89°50'31"E 92.82 FT TO THE WEST LINE OF "THE CROSSINGS OF SILVER RIDGE"
AS RECORDED IN LIBER 67 OF PLATS, PAGES 5, 6, 7 & 8 GENESEE COUNTY RECORDS;
TH S 00°12'18"W 714.05 FT ALONG THE WEST LINE OF SAID "THE CROSSINGS OF
SILVER RIDGE"; TH S 89°00'49"W 141.00 FT; TH S 70°43'56"W 69.31 FT; TH
S 89°01'29"W 111.71 FT; TH S 69°36'04"W 44.24 FT; TH N 59°14'46"W 131.76 FT;
TH N 75°15'55"W 67.88 FT; TH ON A CURVE TO THE RIGHT (R=70.00 FT, DELTA=
36°21'06", LC=N 23°08'50"W 43.67 FT; TH N 89°47'42"W 140.38 FT TO THE EAST
LINE OF "PINNACLE SHORES" AS RECORDED IN LIBER 74, PAGES 24 THRU 28 (REC. AS
GENESEE COUNTY RECORDS; TH N 00°54'25"E 218.71 FT ALONG SAID EAST
LINE OF "PINNACLE SHORES"; TH S 89°08'35"E 253.56 FT; TH N 00°12'18"E
420.12 FT; TH S 89°50'31"E 188.50 FT; TH N 00°12'18"E 250.00 FT TO (REC. AS
THE E & W 1/4 LINE OF SECTION 33; TH S 89°50'31"E 158.68 FT ALONG SAID
E & W 1/4 LINE TO THE POINT OF BEGINNING, CONTAINING 9.715 ACRES.
CONTAINING 17 LOTS, NUMBERED 1 THRU 17, BOTH INCLUSIVE AND ONE PRIVATE
PARK.

THAT I HAVE MADE SUCH SURVEY, LAND DIVISION AND PLAT BY THE
DIRECTION OF THE OWNERS OF SUCH LAND.

THAT SUCH PLAT IS A CORRECT REPRESENTATION OF ALL THE EXTERIOR
BOUNDARIES OF THE LAND SURVEYED AND THE SUBDIVISION OF IT.

THAT THE REQUIRED MONUMENTS AND LOT MARKERS HAVE BEEN LOCATED IN
THE GROUND, OR THAT SURETY HAS BEEN DEPOSITED WITH THE MUNICIPALITY,
AS REQUIRED BY SECTION 125 OF THE ACT.

THAT THE ACCURACY OF SURVEY IS WITHIN THE LIMITS REQUIRED BY
SECTION 126 OF THE ACT.

THAT THE BEARINGS SHOWN ON THE PLAT ARE EXPRESSED AS REQUIRED BY
SECTION 126 (3) OF THE ACT AND AS EXPLAINED IN THE LEGEND.

AND THE SOUTH LINE OF "SILVER SHORE
ESTATES" AS RECORDED IN LIBER 55 OF
PLATS, PAGES 11 AND 12 GENESEE COUNTY
RECORDS.

KIEFT ENGINEERING INC.
5852 S. MAIN STREET
CLARKSTON, MI 48346

9-8-99

DATE OF CERTIFICATION



Timothy J. Hart
TIMOTHY J. HART #33130
TREASURER

AND THE "CROSSINGS OF
SILVER RIDGE NO. 2" AS
RECORDED IN LIBER 68 OF
PLATS, PAGES 1, 2 & 3
GENESEE COUNTY RECORDS.

PROPRIETOR'S CERTIFICATE

WE AS PROPRIETORS, CERTIFY THAT WE CAUSED THE LAND EMBRACED IN THIS PLAT
TO BE SURVEYED, DIVIDED, MAPPED AND DEDICATED AS REPRESENTED ON THIS PLAT
AND THAT THE STREETS ARE FOR THE USE OF THE PUBLIC; THAT THE PUBLIC UTILITY
EASEMENTS ARE PRIVATE EASEMENTS, AND THAT ALL OTHER EASEMENTS ARE FOR THE
USES SHOWN ON THE PLAT. SILVER LANDINGS PARK IS A PRIVATE PARK FOR THE USE OF
THE LOT OWNERS IN SILVER LANDINGS AND ALL LOT OWNERS OF FUTURE PHASES.
WITNESS

David S. Warden
David S. Warden

James D. Bacon
JAMES D. BACON
4169 OWEN ROAD
FENTON, MICHIGAN 48430

Kathy A. Galle
Kathy A. Galle

Margaret M. Bacon
MARGARET M. BACON
4169 OWEN ROAD
FENTON, MICHIGAN 48430

STATE OF MICHIGAN)
COUNTY OF GENESEE) S.S.

ACKNOWLEDGEMENT

PERSONALLY CAME BEFORE ME THIS 8th DAY OF September, 1999.
THE ABOVE NAMED JAMES D. BACON AND MARGARET M. BACON, HIS WIFE TO ME
KNOWN TO BE THE PERSONS WHO EXECUTED THE FOREGOING INSTRUMENT AND
ACKNOWLEDGED THAT THEY EXECUTED THE SAME AS THEIR FREE ACT AND DEED.

Neil Zellen
NOTARY PUBLIC, GENESEE COUNTY, MICHIGAN
MY COMMISSION EXPIRES July 28, 2001

COUNTY TREASURER'S CERTIFICATE

THE RECORDS IN MY OFFICE SHOW NO UNPAID TAXES OR SPECIAL
ASSESSMENTS FOR THE FIVE YEARS PRECEDING 9/10/99
INVOLVING THE LANDS INCLUDED IN THIS PLAT.

Daniel T. Kildee
DANIEL T. KILDEE, COUNTY TREASURER
GENESEE COUNTY, MICHIGAN

CERTIFIED TRUE COPY OF
RECORDED PLAT
BY DEPARTMENT OF CONSUMER
AND INDUSTRY SERVICES
BY *Maynard R. Dyer*
MAYNARD R. DYER, P.S.
MANAGER
SUBDIVISION CONTROL SECTION
DATE 10-11-99

COUNTY DRAIN COMMISSIONERS CERTIFICATE

APPROVED ON 9-10, 1999 AS COMPLYING
WITH SECTION 192 OF ACT 288, P.A. 1967 AND THE APPLICABLE RULES
AND REGULATIONS PUBLISHED BY MY OFFICE IN THE COUNTY OF GENESEE.

Ken Hardin
KEN HARDIN, DRAIN COMMISSIONER

CERTIFICATE OF COUNTY ROAD COMMISSIONERS

APPROVED ON September 14, 1999, AS COMPLYING WITH SECTION
183 OF ACT 288, P.A. 1967, AND THE APPLICABLE PUBLISHED RULES AND
REGULATIONS OF THE BOARD OF ROAD COMMISSIONERS OF GENESEE COUNTY.

John C. Austin CHAIRMAN
JOHN C. AUSTIN CHAIRMAN
Galen Jamison VICE CHAIRMAN
GALEN JAMISON VICE CHAIRMAN

Bonita Lufear-White
BONITA LUFEAR-WHITE MEMBER

CERTIFICATE OF MUNICIPAL APPROVAL

I CERTIFY THAT THE PLAT WAS APPROVED BY THE TOWNSHIP BOARD OF THE
TOWNSHIP OF FENTON, AT A MEETING HELD September 20, 1999
AND WAS REVIEWED AND FOUND TO BE IN COMPLIANCE WITH ACT 288,
P.A. 1967; AS AMENDED; AND THAT THE GENESEE COUNTY DEPARTMENT OF
PUBLIC HEALTH APPROVED THE PRELIMINARY PLAT AND INDIVIDUAL WELLS ON
AUGUST 30, 1999

AND THAT SURETY HAS BEEN POSTED FOR THE PLACING OF THE
MONUMENTS AND LOT MARKERS WITHIN ONE YEAR OF THE ABOVE DATE;
AND THAT THE PUBLIC SEWER SERVICES HAVE BEEN CONSTRUCTED WITHIN THIS PLAT
AND ARE READY FOR CONNECTION.

Charles L. Mueller
CHARLES L. MUELLER, CLERK

COUNTY PLAT BOARD CERTIFICATE

THIS PLAT HAS BEEN REVIEWED AND IS APPROVED BY THE GENESEE
COUNTY PLAT BOARD ON September 22, 1999, AS BEING IN
COMPLIANCE WITH ALL THE PROVISIONS OF ACT 288, P.A. 1967, AND THE
PLAT BOARD'S APPLICABLE RULES AND REGULATIONS.

Melvin Phillip McCre
MELVIN PHILLIP MCCREE
REGISTER OF DEEDS

MICHAEL J. CARR
COUNTY CLERK

Daniel Kildee
DANIEL KILDEE
COUNTY TREASURER

RECORDING CERTIFICATE

STATE OF MICHIGAN)
GENESEE COUNTY)
THIS PLAT WAS RECEIVED FOR RECORD ON THE 10th DAY OF
October, 1999 AT 1:21 P.M. AND RECORDED IN
LIBER 77 OF PLATS ON PAGE 11-13
Melvin P. McCre
MELVIN P. MCCREE, REGISTER OF DEEDS