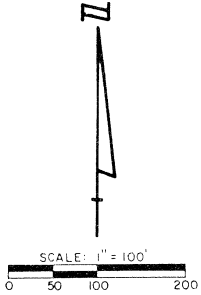
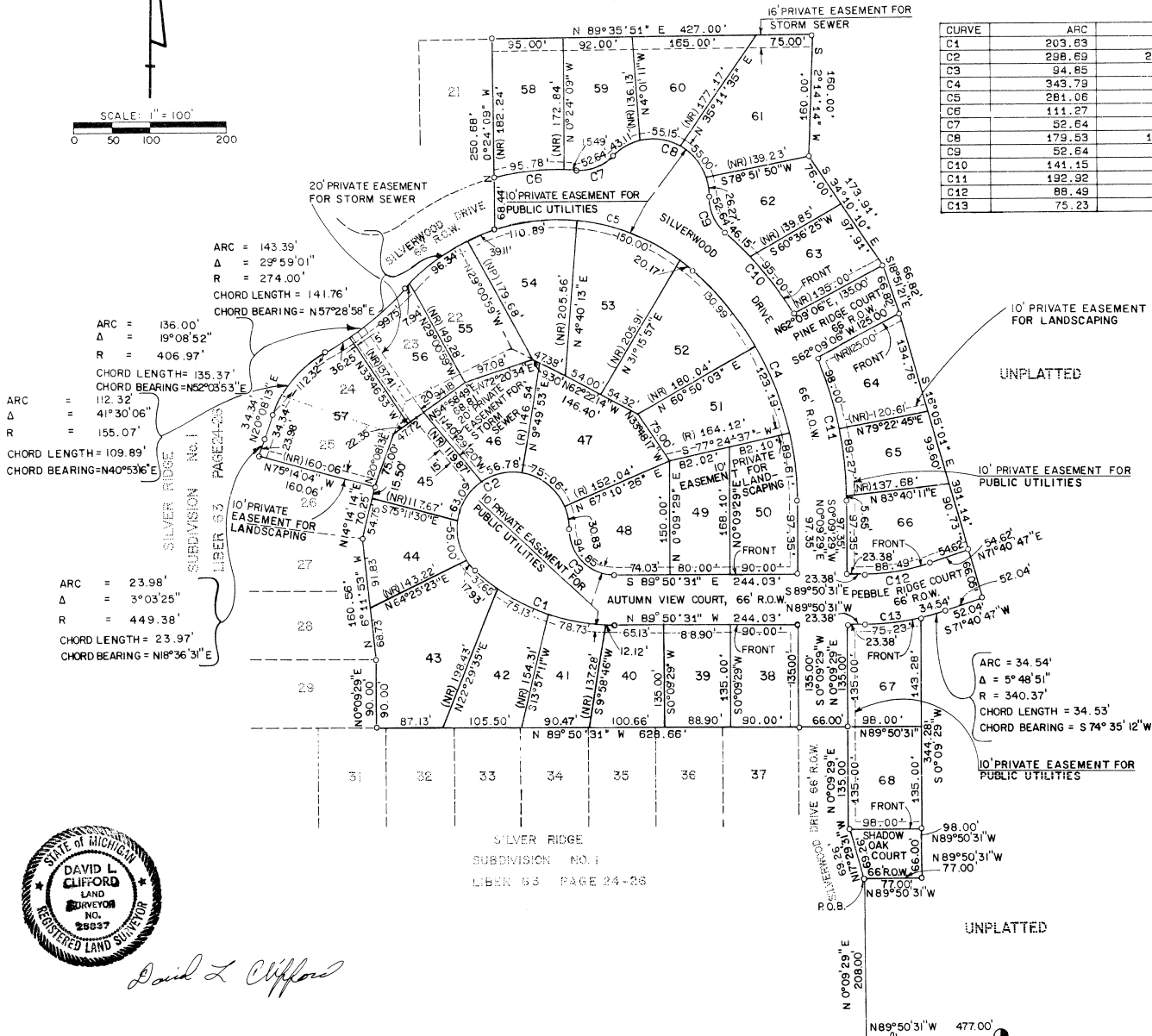


SILVER RIDGE SUBDIVISION NO. 2

A SUBDIVISION OF A PART OF THE NE 1/4, SECTION 33, T5N, R6E,
FENTON TOWNSHIP, GENESEE COUNTY, MICHIGAN



UNPLATTED



CURVE	ARC	DELTA	RADIUS	CHORD LENGTH	CHORD BEARING
C1	203.63	42°23'20"	275.24	199.02	N 68°38'51" W
C2	298.69	228°40'55"	75.00	136.93	N 66°38'17" E
C3	94.85	90°34'16"	60.00	85.27	S 44°33'23" E
C4	343.79	48°54'43"	402.71	333.44	N 24°17'52" W
C5	281.06	58°46'18"	274.00	268.90	N 78°08'23" W
C6	111.27	18°45'05"	340.00	110.78	N 85°14'52" E
C7	52.64	50°15'56"	60.00	50.97	N 69°29'26" E
C8	179.59	137°09'15"	75.00	139.64	S 87°03'55" E
C9	52.64	50°15'56"	60.00	50.97	S 23°37'15" E
C10	141.15	17°15'15"	468.71	140.62	S 40°07'36" E
C11	192.92	23°34'59"	468.71	191.56	S 11°38'00" E
C12	88.49	18°28'43"	274.37	88.11	N 80°55'08" E
C13	75.23	12°39'51"	340.37	75.08	N 83°49'34" E

PLAT LEGEND

All dimensions are shown in feet.

All curvilinear dimensions are shown along the arc.

All bearings are in relation to the recorded plat of Silver Shore Estates Recorded in Liber 55 of Plats, Pages 11 and 12 of Genesee County Records.

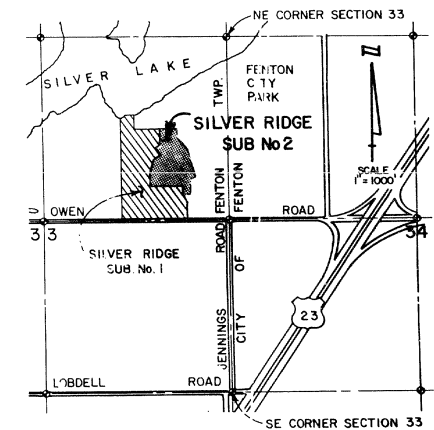
The symbol "o" indicates a concrete monument with surveyor's identification cap. Concrete monuments are made of a solid steel bar 1/2 inch in diameter and 36 inches long and completely encased in concrete 4 inches in diameter.

All lot markers are iron bars, 18 inches long and 1/2 inch in diameter with surveyor's identification caps.

Surveyor's identification caps are plastic, orange in color and are inscribed with the legend "RLS 25837".

"R" indicates a radial lot line.

"NR" indicates a lot line that is not radial.



VICINITY MAP



David L. Clifford

CENTER SEC. 33, T5N, R6E
FENTON TWP
GENESEE CO., MICHIGAN

E-W 1/4 LINE & E OWEN ROAD N 89°50'31" W (RECORDED AS N 89°51' W) 2202.64' E 1/4 CORNER SECTION 33, T5N, R6E
FENTON TWP
GENESEE CO., MICHIGAN

60677

SILVER RIDGE SUBDIVISION NO. 2

A SUBDIVISION OF A PART OF THE NE 1/4, SECTION 33, T5N, R6E,
FENTON TOWNSHIP, GENESEE COUNTY, MICHIGAN

SURVEYOR'S CERTIFICATE

I, David L. Clifford, Surveyor, certify:

That I have surveyed, divided and mapped the land shown on this plat, described as follows: Silver Ridge Subdivision No. 2, a subdivision of a part of the NE 1/4 of Section 33, T5N, R6E, Fenton Township, Genesee County, Michigan; including a replat of lots 22, 23, 24 and 25 of Silver Ridge Subdivision No. 1 as recorded in Liber 63, pages 24, 25, & 26, Genesee County Records:

Commencing at the East 1/4 Corner Section 33, T5N, R6E, Fenton Township, Genesee County, Michigan; thence N89°50'31"W, along the East-West 1/4 line of said Section 33, 477.00 feet to the Southeast Corner of Silver Ridge Subdivision No. 1 as recorded in Liber 63, pages 24, 25 and 26, Genesee County Records; thence N00°09'29"E, along the East line of said subdivision, 208.00 feet to the POINT OF BEGINNING of this description; thence along the boundary of said Silver Ridge Subdivision No. 1 the following courses and distances: N17°29'31"W, 69.26 feet; N00°09'29"E, 135.00 feet; N89°50'31"W, 628.66 feet; thence N00°09'29"E, 90.00 feet; thence N06°11'53"W, 160.56 feet; thence N14°14'14"E, 70.25 feet to the Southeast corner of Lot 25 of Silver Ridge Subdivision No. 1; thence N75°14'04"W, along the Southerly line of said Lot 25, 160.06 feet to the Southerly line of Silverwood Drive; thence the following courses and distances along Silverwood Drive; along a curve to the right 23.98 feet, said curve having a delta angle of 3°03'25", a radius of 449.38 feet, and a Long Chord of 23.97 feet bearing N18°36'31"E; N20°08'13"E, 34.34 feet; along a curve to the right 112.32 feet, said curve having a delta angle of 41°30'06", a radius of 155.07 feet and a Long Chord of 109.89 feet bearing N40°53'16"E; along a curve to the left 136.00 feet, said curve having a delta angle of 19°08'52", a radius of 406.97 feet and a Long Chord of 135.37 feet bearing N52°03'53"E; along a curve to the right 143.39 feet, said curve having a delta angle of 29°59'01", a radius of 274.00 feet and a Long Chord of 141.76 feet bearing N57°28'58"E; thence N00°24'09"W, along the East line of Silver Ridge Subdivision No. 1, 250.68 feet; thence N89°35'51"E, 427.00 feet; thence S02°14'14"W, 160.00 feet; thence S34°10'10"E, 173.92 feet; thence S18°51'21"E, 66.82 feet; thence S16°05'01"E, 391.14 feet; thence S71°40'47"W, 52.04 feet; thence 34.54 feet along a curve to the right, said curve having a delta angle of 5°48'51", a radius of 340.37 feet and a Long Chord of 34.53 feet bearing S74°35'12"W; thence S00°09'29"W, 344.28 feet; thence N89°50'31"W, 77.00 feet to the point of beginning. The above described lands contain 14.407 acres divided into 31 lots numbered 38 thru 68 inclusive.

That I have made such a survey, land-division and plat by the direction of the owners of such land.

That such plat is a correct representation of all the exterior boundaries of the land surveyed and the subdivision of it.

That the required monuments and lot markers have been located in the ground or that surety has deposited with the municipality, as required by Section 125 of the Act.

That the accuracy of survey is within the limits required by Section 126 of the Act.

That the bearings shown on the plat are expressed as required by Section 126(3) of the Act and as explained in the Legend.

Date: 11/4/88



David L. Clifford
David L. Clifford, L.L.S.
SEG Engineers and Consultants, Inc.
1120 May Street
Lansing, Michigan 48906
Registration Number: 25837

John C. O'Malley P.E.
John C. O'Malley, P.E., Chairman
SEG Engineers and Consultants, Inc.
1120 May Street
Lansing, Michigan 48906
Registration Number: 20566

PROPRIETOR'S CERTIFICATE

Silver Ridge Development, Inc., a corporation duly organized and existing under the laws of the State of Michigan, by Joseph G. Asher, President and Antoinette G. Asher, Secretary-Treasurer as proprietor, has caused the land to be surveyed, divided, mapped and dedicated as represented on this plat and that the streets are for the use of the public; that the public utility easements are private easements and that all other easements are for the uses shown on the plat.

Witness

Donald R. Deaver
Donald R. Deaver

Mary C. Salerno
Mary C. Salerno

Silver Ridge Development, Inc.
2359 W. Shiawassee, Suite A
Fenton, Michigan 48430

Joseph G. Asher
Joseph G. Asher, President

Antoinette G. Asher
Antoinette G. Asher,
Secretary-Treasurer

ACKNOWLEDGEMENT

State of Michigan)
Genesee County) S.S.

Personally came before me this 14th day of February, 1989, Joseph G. Asher, President and Antoinette G. Asher, Secretary-Treasurer of Silver Ridge Development, Inc., to me known to be the persons who executed the foregoing instrument, and to me known to be such president and secretary-treasurer of said corporation and acknowledged that they executed the foregoing instrument as such officers as the free act and deed of said corporation, by its authority.

Notary Public Judy B. Beck
Judy B. Beck

SHIawassee County
State of Michigan
Acting in Genesee County

My Commission Expires: 6/21/89

PROPRIETOR'S CERTIFICATE

We, as proprietors, certify that we caused the land embraced in this plat to be surveyed, divided, mapped and dedicated as represented on this plat and that the streets are for the use of the public; that the public utility easements are private easements and that all other easements are for the uses shown on the plat.

Witness

Donald R. Deaver
Donald R. Deaver

Mary C. Salerno
Mary C. Salerno

Harry S. Wykes
Harry S. Wykes
221 Second St.
Fenton, MI. 48430

Doris L. Wykes
Doris L. Wykes
221 Second St.
Fenton, MI. 48430

ACKNOWLEDGEMENT

State of Michigan)
Genesee County) S.S.

Personally came before me this 14th day of February, 1989, the above named Harry S. Wykes and Doris L. Wykes, husband and wife, to me known to be the persons who executed the foregoing instrument and acknowledged that they executed the same as their free act and deed.

Notary Public, Judy B. Beck
Judy B. Beck

SHIawassee County
State of Michigan
Acting in Genesee County

My commission expires: 6/21/89

PROPRIETOR'S CERTIFICATE

BANKONE, FENTON, NA, a corporation duly organized and existing under the laws of the State of Michigan, by Gregory L. Ford, Assistant Vice President, as proprietor, has caused the land to be surveyed, divided, mapped and dedicated as represented on this plat and that the streets are for the use of the public; that the public utility easements are private easements and that all other easements are for the uses shown on the plat.

Witness

Rosemary Waligora
Rosemary Waligora

Mary C. Salerno
Mary C. Salerno

BANKONE, FENTON, NA
226 W. Caroline St.
Fenton, Michigan 48430

Gregory L. Ford
Gregory L. Ford,
Assistant Vice President

ACKNOWLEDGEMENT

State of Michigan)
Genesee County) S.S.

Personally came before me this 14th day of February, 1989, Gregory L. Ford, Assistant Vice President of BANKONE, FENTON, NA, to me known to be the person who executed the foregoing instrument, and to me known to be such Assistant Vice President of said corporation and acknowledged that he executed the foregoing instrument as such officer as the free act and deed of said corporation, by its authority.

Notary Public Judy B. Beck
Judy B. Beck

SHIawassee County
State of Michigan
Acting in Genesee County

My Commission Expires: 6/21/89

SILVER RIDGE SUBDIVISION NO. 2

A SUBDIVISION OF A PART OF THE NE 1/4, SECTION 33, T5N, R6E,
FENTON TOWNSHIP, GENESEE COUNTY, MICHIGAN

COUNTY TREASURER'S CERTIFICATE

The records in my office show no unpaid taxes or special assessments for the five years preceding March 23, 1989 involving the lands included in this plat.

William P. Barkey, Jr.
William P. Barkey, Jr., COUNTY TREASURER

COUNTY DRAIN COMMISSIONER'S CERTIFICATE

Approved on Mar 01, 1989 as complying with Section 192 of Act 288, P.A. 1967 and the applicable rules and regulations published by my office in the County of Genesee.

Anthony Regnone
Anthony Regnone, DRAIN COMMISSIONER

CERTIFICATE OF COUNTY ROAD COMMISSIONERS

Approved on June 27, 1989 as complying with Section 183 of Act 288, P.A. 1967 and the applicable published rules and regulations of the Board of Road Commissioners of Genesee County.

Preston E. Schmidt
Preston E. Schmidt, CHAIRMAN

John W. Hunter
John W. Hunter, MEMBER

CERTIFICATE OF MUNICIPAL APPROVAL

I certify that this plat was approved by the Township Board of the Township of Fenton at a meeting held July 5, 1989 and was reviewed and found to be in compliance with Act 288, P.A. of 1967, and further that the Genesee County Health Department approved the preliminary plat on July 15, 1987 for use of private on-site water supplies; that surety has been posted to insure the installation of public sewer services; that the municipality has adopted a subdivision control ordinance and waives the minimum lot size specified; and that surety has been posted to ensure the placing of the required monuments and lot corners within one year of the date of this certificate.

Ted D. Goupil
Ted D. Goupil, TOWNSHIP CLERK

COUNTY PLAT BOARD CERTIFICATE

This plat has been reviewed and is approved by the Genesee County Plat Board on July 12, 1989 as being in compliance with all of the provisions of Act 288, P.A. 1967, and the plat board's applicable rules and regulations.

Jeffrey A. Bruhn
Jeffrey A. Bruhn, REGISTER OF DEEDS

William P. Barkey, Jr.
William P. Barkey, Jr., COUNTY TREASURER

RECORDING CERTIFICATE

State of Michigan
Genesee County

This plat was received for record on the 29th day of October, 1989 at 2:53 PM, and recorded in Liber 64 of Plats on Pages 31, 32 and 33.

Jeffrey A. Bruhn
Jeffrey A. Bruhn, REGISTER OF DEEDS

CERTIFIED TRUE COPY OF
RECORDED PLAT
BY DEPARTMENT OF COMMERCE

By Richard E. Lomas HJT
Richard E. Lomas, L.S.
Manager Plat Section

Date February 27, 1990



David L. Clifford

NOTICE OF RESOLUTION

2380 PAGE 521 60678

At a meeting of The Board of County Road Commissioners of the County of Genesee, Michigan, held at 211 West Oakley Street, Flint, Michigan 48503, on the 30th day of November, 1989, at which time a quorum of the members was present, the following resolution was unanimously adopted by vote taken by yeas and nays and entered at large upon the records of said Board.

RESOLUTION

WHEREAS, the Statutes of the State of Michigan require all roads and streets eligible to become a part of the County Road System to be formally accepted by resolution of said Board; and,

WHEREAS, the Michigan Department of Transportation by virtue of Act 51 of the Public Acts of 1951, requires proof of the acceptance of all roads subsequent to April 1, 1951, by the said Board; and,

WHEREAS, certain roads have been improved to meet the specifications and requirements of The Board of County Road Commissioners of the County of Genesee and have been approved by said Board.

NOW, THEREFORE, BE IT RESOLVED, by The Board of County Road Commissioners of the County of Genesee, Michigan, That the following roads be and are adopted into the Local Road System of the County of Genesee and thereby become eligible for funds from the Gas and Weight Tax of the State of Michigan, as specified in Act 51 of the Public Acts of 1951, as amended and supplemented.

FENTON TOWNSHIP:

All of AUTUMN VIEW COURT being 575.62 feet or 0.11 miles, more or less, in length;
All of PEBBLE RIDGE COURT being 208.84 feet or 0.04 miles, more or less, in length;
All of PINE RIDGE COURT being 163 feet or 0.03 miles, more or less, in length;
All of SHADOW OAK COURT being 137 feet or 0.03 miles, more or less, in length;
All of SILVERWOOD DRIVE being 1,008.85 feet or 0.19 miles, more or less, in length; as dedicated for public use in the plat of Silver Ridge Subdivision No. 2, as recorded in Liber 64, pages 31, 32 and 33, being a part of Section 33, T7N-R6E, Fenton Township, Genesee County, Michigan, constituting 0.40 miles, more or less, of County Local Road.

FLINT TOWNSHIP:

All of COVERED WAGONS TRAIL being 795.18 feet or 0.15 miles, more or less, in length; as dedicated for public use in the plat of Western Hills No. 12, as recorded in Liber 64, pages 24 and 25, being a part of Section 7, T7N-R6E, Flint Township, Genesee County, Michigan, constituting 0.15 miles, more or less, of County Local Road.

FLUSHING TOWNSHIP:

All of FIELDSTONE DRIVE being 1,210.23 feet or 0.23 miles, more or less, in length, as dedicated for public use in the plat of Thornridge No. 2, as recorded in Liber 64, pages 28, 29 and 30, being a part of Section 36, T8N-R6E, Flushing Township, Genesee County, Michigan, constituting 0.23 miles, more or less, of County Local Road.

NOW, BE IT FURTHER RESOLVED, That a notice of this determination be published in The Flint-Genesee County Legal News, a newspaper of general circulation, once each week for three consecutive weeks; that certified copies of this resolution be served on the Michigan Department of Transportation, the Plat Division of the Department of Commerce of the State of Michigan, and the Clerks of Fenton, Flint and Flushing Townships, and that said resolution be recorded in the office of the Register of Deeds for Genesee County, Michigan.

GENESEE COUNTY ROAD COMMISSION * * * *
211 W. Oakley St.
FLINT, MI 48503-3995

I hereby certify that the above is a true copy of a part of the minutes of a meeting held on the 30th day of November, 1989, by The Board of County Road Commissioners of the County of Genesee, Michigan.

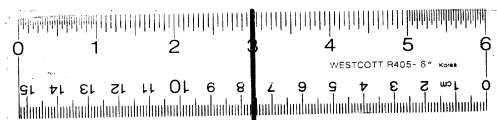
Signed Anita R. Magee
Deputy Clerk of the Board

Prepared by:
Genesee County Road Commission
211 W. Oakley Street
Flint, MI 48503

RECORDED
REGISTER OF DEEDS
JUN 10 1 53 PM '90
GENESEE COUNTY
FLINT MICHIGAN

GENESEE COUNTY ROAD COMMISSION
211 W. Oakley St.
FLINT, MI 48503-3995

1327



16 X