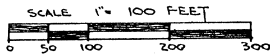


# SOUTH SILVER LAKE HI-LANDS

PART OF THE SE 1/4 OF SEC. 32 T5N R6E AND PART OF THE SW 1/4 OF SEC. 33 T5N R6E TOWNSHIP OF FENTON  
GENESEE COUNTY MICHIGAN

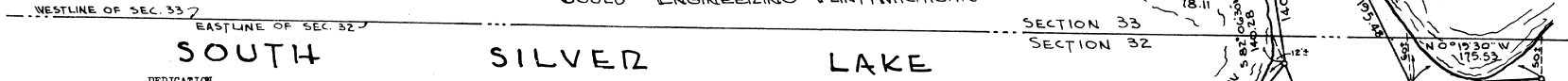


ALL DIMENSIONS ARE IN FEET AND DECIMALS THEREOF



ALL LOTS ON LAKE EXTEND TO THE WATERS EDGE, AS SHOWN HEREON

GOULD ENGINEERING - FLINT, MICHIGAN



### DEDICATION

KNOW ALL MEN BY THESE PRESENTS, That We, Albert H. McClatchey and Violet McClatchey, his wife, and George W. Pellett and Carolyn D. Pellett, his wife, as proprietors, have caused the land embraced in the annexed plat to be surveyed, laid out and platted, to be known as "SOUTH SILVER LAKE HI-LANDS" Part of the SE 1/4 of Sec. 32 T5N R6E and Part of the SW 1/4 of Sec. 33 T5N R6E Township of Fenton, Genesee County, Michigan, and that road and trail as shown on said plat are hereby dedicated to the use of the public.

Witnesses:

*Carlton M. Van Pool*  
Carlton M. Van Pool  
Notary Public  
D. H. Stiles

*Albert H. McClatchey*  
Albert H. McClatchey  
*Violet McClatchey*  
Violet McClatchey  
*George W. Pellett*  
George W. Pellett  
*Carolyn D. Pellett*  
Carolyn D. Pellett

STATE OF MICHIGAN) ss  
County of Genesee)

On this 13 day of MAY 1954, before me, a notary public in and for said county personally appeared the above named Albert H. McClatchey and Violet McClatchey, and George W. Pellett and Carolyn D. Pellett, known to me to be the persons who executed the above dedication, and who acknowledged the same to be the ir free act and deed.

My Commission Expires MARCH 22 - 1957 Notary Public, Genesee County, Mich.

### CERTIFICATE OF APPROVAL BY COUNTY BOARD

This plat was approved on the 22 day of June 1954

*Earl M. Smith*  
Earl M. Smith - Reg. of Deeds  
*James P. Barkley*  
James P. Barkley - County Treasurer  
*George G. Dunn*  
George G. Dunn - County Clerk  
*Bernard D. O'Brien-Drain*  
Bernard D. O'Brien-Drain - Commissioner

### CERTIFICATE OF APPROVAL BY BOARD OF COUNTY ROAD COMMISSIONERS

This plat has been examined and was approved by the Genesee County Board of Road Commissioners on the 22 day of June 1954.

*C. M. Bullard*  
C. M. Bullard - Commissioner  
*A. Harold Bergh*  
A. Harold Bergh - Commissioner

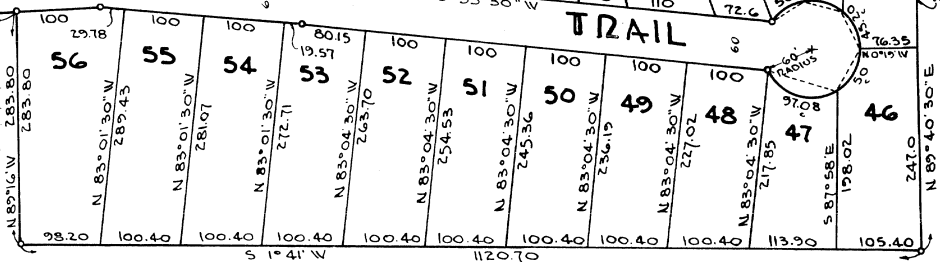
### COUNTY TREASURER'S CERTIFICATE RELATING TO TAXES

Office of County Treasurer, Genesee County, Michigan

I hereby certify that there are no tax liens or titles held by the State on the lands described hereon, and that there are no tax liens or titles held by individuals on said lands for the five years preceding the 13 day of May 1954, and that the taxes for said period of five years are paid as shown by the records of this office.

*James P. Barkley*  
James P. Barkley - County Treasurer

### HI-LAND TRAIL



COPY  
Register's Office  
County of Genesee  
Notary Public  
M. H. Liber

### SURVEYORS' CERTIFICATE

I hereby certify that the plat hereon delineated is a correct one, and that permanent metal monuments consisting of bars not less than one half inch in diameter and 18 inches in length encased in a concrete cylinder at least four inches in diameter and 18 inches in depth have been placed at all points marked thus "o" as thereon shown at all angles in the boundaries of the land platted, at the intersections of the lines of the streets, and at the intersection of the lines of the streets with the boundaries of the plat as shown on said plat.

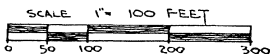
*Clarence F. Alkman*  
Clarence F. Alkman - Reg. Surveyor # 5132

# SOUTH SILVER LAKE HI-LANDS

PART OF THE SE 1/4 OF SEC. 32 T5N R6E AND PART OF THE SW 1/4 OF SEC. 33 T5N R6E TOWNSHIP OF FENTON  
GENESEE COUNTY MICHIGAN



ALL DIMENSIONS ARE IN FEET AND DECIMALS THERE OF



ALL LOTS ON LAKE EXTEND TO THE WATERS EDGE, AS SHOWN HEREON

GOULD ENGINEERING - FLINT, MICHIGAN

