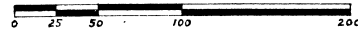


SQUAW LAKE SHORES NO. 1

Part of the NE 1/4 Sec. 21, T5N-R6E, Fenton Twp, Genesee Co., Michigan



SCALE 1" = 50'
ALL DIMENSIONS ARE
IN FEET AND DECIMALS THEREOF
All lots extend to edge of water
All dimensions on curves are chord measurements
Monumented Line A-B-C-D-E-F-G-H is building
set-back reference line



SQUAW LAKE

SADLER DRIVE

MCFARLAN SHORES

SQUAW LAKE DRIVE (Private)

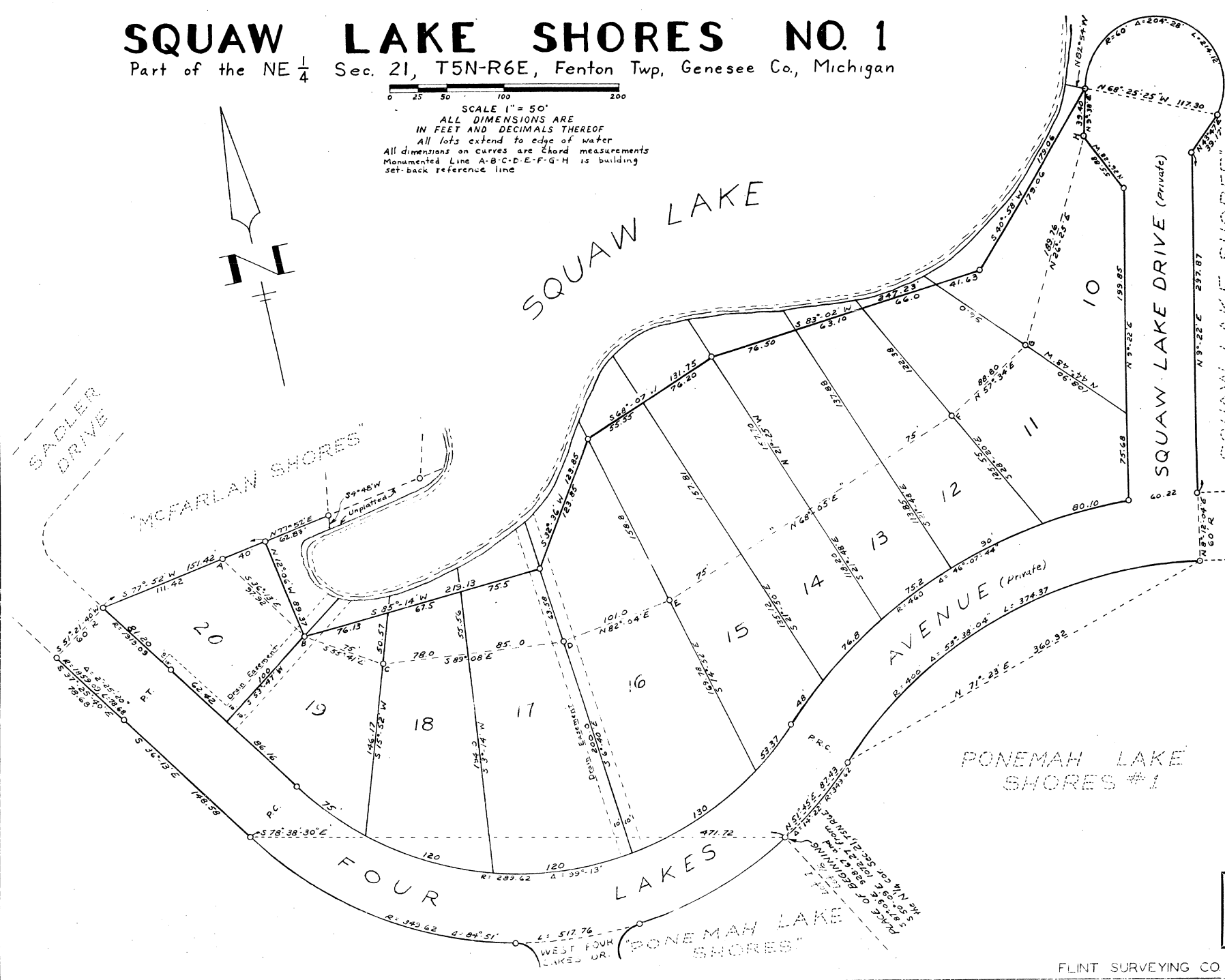
SQUAW LAKE SHORES

AVENUE (Private)

PONEMAH LAKE SHORES #1

FOUR LAKES

PONEMAH LAKE SHORES



39305

SQUAW LAKE SHORES NO. 1

Part of the NE $\frac{1}{4}$ Sec. 21, T5N-R6E, Fenton Twp, Genesee Co, Michigan

DEDICATION

KNOW ALL MEN BY THESE PRESENTS, THAT WE, HAROLD J. McFARLAN AND EDNA M. McFARLAN, HIS WIFE, AND ROBERT B. McFARLAN AND CATHERINE M. McFARLAN, HIS WIFE, AS PROPRIETORS, HAVE CAUSED THE LAND EMBRACED IN THE ANNEXED PLAT TO BE SURVEYED, LAID OUT, AND PLATTED, TO BE KNOWN AS "SQUAW LAKE SHORES NO. 1", PART OF THE NE $\frac{1}{4}$ SECTION 21, T5N-R6E, FENTON TWP., GENESSEE COUNTY, MICHIGAN, AND THAT THE AVENUE AND DRIVE AS SHOWN ON SAID PLAT ARE HEREBY DEDICATED TO THE USE OF ALL PRESENT AND FUTURE OWNERS OF LOTS IN THIS PLAT, AND ADJACENT PLATS.

WITNESSES: Joyce A. McFarlan
John C. Mackie
Darwin L. Hagglob

Harold J. McFarlan
 HAROLD J. McFARLAN
Edna M. McFarlan
 EDNA M. McFARLAN
Robert B. McFarlan
 ROBERT B. McFARLAN
Catherine M. McFarlan
 CATHERINE M. McFARLAN

STATE OF MICHIGAN) ss
 COUNTY OF GENESSEE)

ON THIS 20 DAY OF December 1956, BEFORE ME, A NOTARY PUBLIC IN AND FOR SAID COUNTY, PERSONALLY APPEARED THE ABOVE NAMED HAROLD J. McFARLAN AND EDNA M. McFARLAN, HIS WIFE, AND ROBERT B. McFARLAN AND CATHERINE M. McFARLAN, HIS WIFE, KNOWN TO ME TO BE THE PERSONS WHO EXECUTED THE ABOVE DEDICATION, AND WHO ACKNOWLEDGED THE SAME TO BE THEIR FREE ACT AND DEED.

MY COMMISSION EXPIRES NOVEMBER 30, 1950

John C. Mackie
 JOHN C. MACKIE, NOTARY PUBLIC
 GENESSEE COUNTY

CERTIFICATE OF MUNICIPAL APPROVAL

THIS PLAT WAS APPROVED BY THE TOWNSHIP BOARD OF THE TOWNSHIP OF FENTON AT A MEETING HELD ON THE 10 DAY OF Jan 1957.

G. C. Lutz
 G. C. LUTZ, TOWNSHIP CLERK

DESCRIPTION OF LAND RELATED

THE LAND EMBRACED IN THE ANNEXED PLAT OF "SQUAW LAKE SHORES NO. 1", PART OF THE NE $\frac{1}{4}$ SECTION 21, T5N-R6E, FENTON TWP., GENESSEE COUNTY, MICHIGAN, IS DESCRIBED AS FOLLOWS: BEGINNING AT A POINT IN THE SOUTH LINE OF FOUR LAKED AVENUE THAT IS S 57° 09' E 928.67 FEET, AND S 50° 09' E 1072.27 FEET FROM THE N. CORNER OF SAID SECTION 21, THENCE NORTHEASTERLY ON A CURVE TO THE LEFT (CENTRAL ANGLE 148° 22', RADIUS 349.62 FEET) CHORD BEARING AND DISTANCE N 51° 45' E 87.43 FEET TO A P.P.C., THENCE TO THE RIGHT ON A CURVE (CENTRAL ANGLE 53° 36' 04", RADIUS 400 FEET) CHORD BEARING AND DISTANCE N 71° 23' E 306.92 FEET, THENCE N 5° 12' 04" E 60 FEET RADIALLY TO SAID CURVE, THENCE N 9° 32' E 297.87 FEET, THENCE N 43° 47' E 39.17 FEET TO A P.C., THENCE ON A CURVE TO THE LEFT (CENTRAL ANGLE 204° 28', RADIUS 60 FEET) CHORD BEARING AND DISTANCE N 66° 25' 25" W 117.30 FEET, THENCE S 40° 58' W 179.06 FEET, THENCE S 83° 02' W 247.23 FEET, THENCE S 68° 07' W 131.75 FEET, THENCE S 32° 36' W 123.85 FEET, THENCE S 85° 14' W 219.13 FEET, THENCE N 12° 06' W 59.37 FEET TO A POINT IN THE SOUTH LINE OF McFARLAN SHORES, THENCE S 77° 52' W 151.42 FEET ALONG THE SOUTH LINE OF SAID PLAT, THENCE S 51° 21' 40" W 60 FEET, THENCE SOUTHEASTERLY ON A CURVE (CENTRAL ANGLE 24° 25' 20", RADIUS 1859.09) CHORD BEARING AND DISTANCE S 37° 25' 43" E 78.68 FEET TO A P.T., THENCE S 36° 13' E 148.50 FEET, THENCE ON A CURVE TO THE LEFT (CENTRAL ANGLE 84° 51', RADIUS 349.62 FEET) CHORD BEARING AND DISTANCE S 78° 38' 30" E 471.72 FEET TO THE PLACE OF BEGINNING. THIS PLAT CONTAINS ELEVEN LOTS, AND INCLUDES A REPLAT OF PART OF FOUR LAKED AVENUE, AND ALL OF SQUAW LAKE DRIVE.

CERTIFICATE OF APPROVAL BY COUNTY BOARD

THIS PLAT WAS APPROVED ON THE 24 DAY OF January 1957

Earl H. Smith
 EARL H. SMITH-REGISTER OF DEEDS
James P. Barkey
 JAMES P. BARKEY-COUNTY TREASURER
George B. Dunn
 GEORGE B. DUNN-COUNTY CLERK
B. E. O'Brien
 B. E. O'BRIEN-DRAIN COMMISSIONER

CERTIFICATE OF APPROVAL BY BOARD OF COUNTY ROAD COMMISSIONERS

THIS PLAT HAS BEEN EXAMINED AND WAS APPROVED ON THE 24 DAY OF Jan 1957 BY THE GENESSEE COUNTY BOARD OF ROAD COMMISSIONERS.

C. M. Bullard COMMISSIONER
Harold Bergh
 A. HAROLD BERGH-COMMISSIONER
Robert G. Todd
 ROBERT G. TODD-COMMISSIONER

COUNTY TREASURER'S CERTIFICATE RELATING TO TAXES

OFFICE OF THE COUNTY TREASURER, GENESSEE COUNTY, MICHIGAN

I HEREBY CERTIFY THAT THERE ARE NO TAX LIENS OR TITLES HELD BY THE STATE ON THE LANDS DESCRIBED HEREON, AND THAT THERE ARE NO TAX LIENS OR TITLES HELD BY INDIVIDUALS ON SAID LANDS FOR THE FIVE YEARS PRECEDING THE 20 DAY OF Dec 1956, AND THAT TAXES FOR SAID PERIOD OF FIVE YEARS ARE PAID AS SHOWN BY THE RECORDS OF THIS OFFICE. THIS CERTIFICATE DOES NOT APPLY TO TAXES, IF ANY, NOW IN PROCESS OF COLLECTION BY TOWNSHIP, CITY OR VILLAGE COLLECTION OFFICERS.

James P. Barkey
 JAMES P. BARKEY-COUNTY TREASURER

OWNER'S CERTIFICATE

I HEREBY CERTIFY THAT THE PLAT HEREIN DELINEATED IS A CORRECT ONE, AND THAT PERMANENT METAL MONUMENTS CONSISTING OF BARS NOT LESS THAN ONE-HALF INCH IN DIAMETER AND 36 INCHES IN LENGTH ENCASED IN A CONCRETE CYLINDER AT LEAST FOUR INCHES IN DIAMETER AND 30 INCHES IN DEPTH HAVE BEEN PLACED AT ALL POINTS MARKED THUS "O" AS THEREIN SHOWN AT ALL ANGLES IN THE PLAT BOUNDARIES AT THE INTERSECTIONS OF STREETS AND AT THE INTERSECTION OF STREETS WITH THE BOUNDARIES OF THE PLAT AS SHOWN ON SAID PLAT, AND AT THE ANGLE POINTS IN THE BUILDING SET-BACK REFERENCE LINE.

John C. Mackie
 JOHN C. MACKIE, R.L.S. #7434

COPY

Register's Office }
 Genessee County, } ss.
 Plat of Squaw Lake
Shores No. 1
 was Recorded this 7 day of
May 1957
At 10:32 AM
 on page 18411
James Kiser
 Register of Deeds
 (ORIGINAL ON FILE)

I hereby certify this copy is a true and correct copy of the original plat and the Register of Deeds for recording.
 Date May 2, 1957
 FILED
 Date May 8, 1957
 EXAMINED AND
 Date May 2, 1957
Frank S. Brown
 Auditor General

By W. L. Mac Elroy