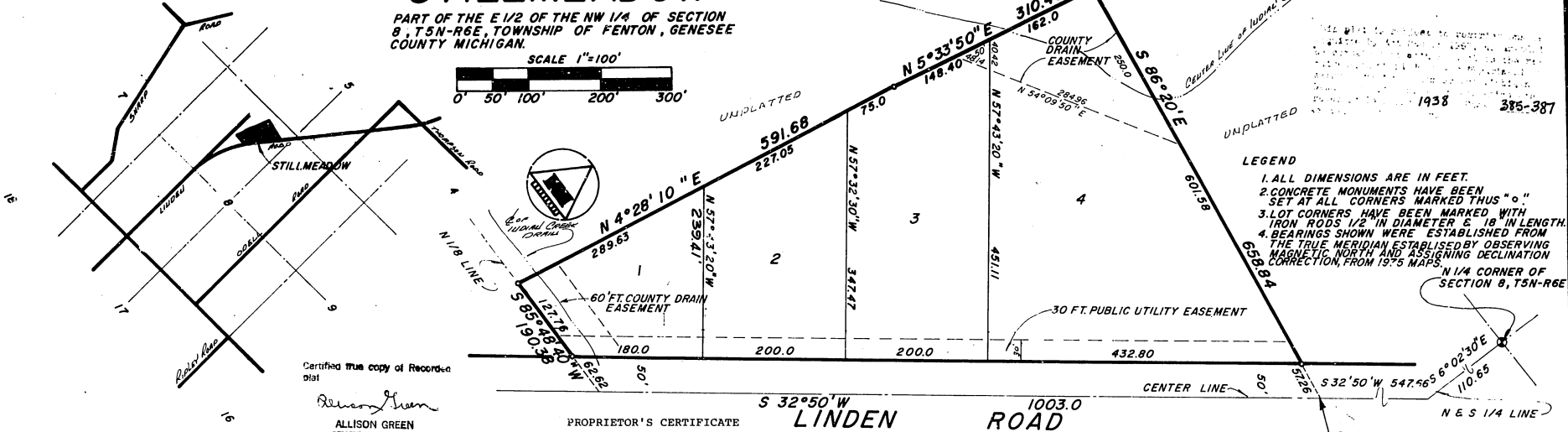
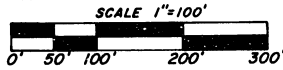


STILLMEADOW

PART OF THE E 1/2 OF THE NW 1/4 OF SECTION 8, T5N-R6E, TOWNSHIP OF FENTON, GENESEE COUNTY MICHIGAN.



LEGEND
 1. ALL DIMENSIONS ARE IN FEET.
 2. CONCRETE MONUMENTS HAVE BEEN SET AT ALL CORNERS MARKED THUS "O"
 3. LOT CORNERS HAVE BEEN MARKED WITH IRON RODS 1/2" IN DIAMETER & 18" IN LENGTH.
 4. BEARINGS SHOWN WERE ESTABLISHED FROM THE TRUE MERIDIAN ESTABLISHED BY OBSERVING MAGNETIC NORTH AND ASSIGNING DECLINATION CORRECTION FROM 1975 MAPS.

Certified true copy of Record-
 dist
 Allison Green
 STATE TREASURER
 Richard E. Lomas - Plat Examiner
 Date June 9, 1976

LOCATION SKETCH

SURVEYOR'S CERTIFICATE

I, Frederick J. Shaltz, Jr., surveyor, certify:
 That I have surveyed, divided and mapped the land shown on this plat, described as follows: STILLMEADOW, Part of the E 1/2 of the NW 1/4 of Section 8, T5N-R6E, Township of Fenton, Genesee County, Michigan, beginning at a point on the center line of Linden Road which is S 6°02'30" E along the N 1/4 S 1/4 line 110.65 feet and S 32°50' W 547.66 feet from the NW corner of Section 8, T5N-R6E; thence S 32°50' W along said center line 1003.0 feet to the N 1/8 line of Section 8; thence S 35°43'40" W along said N 1/8 line 190.38 feet; thence N 4°28'10" E 591.68 feet; thence N 5°33'50" E 310.40 feet; thence S 86°20' E 658.84 feet to the point of beginning, containing 4 numbered lots and 8.5 acres of gross land.
 That I have made such survey, land-division and plat by the direction of the owners of such land.
 That such plat is a correct representation of all the exterior boundaries of the land surveyed and the subdivision of it.
 That the required monuments and lot markers have been located in the ground of that surety has been deposited with the municipality, as required by section 125 of the act.
 That the accuracy of survey is within the limits required by section 126 of the act.
 That the bearings shown on the plat are expressed as required by section 126 (3) of the act and as explained in the legend.

DECEMBER 4, 1975
 Date

DELTA LAND SURVEYING & ENGINEERING, INC.
 120 W. First Street
 Flint, Michigan 48502

Frederick J. Shaltz, Jr.
 Frederick J. Shaltz, Jr. - Secretary
 R.L.S. 13595



RECORDING CERTIFICATE
 State of Michigan)
 Genesee County)

This plat was received for record on the 5th day of April, A.D. 1976 at 1:43 o'clock P.M., recorded in Liber 54 of plats on page 64.

Floyd J. McCree
 Register of Deeds

PROPRIETOR'S CERTIFICATE

We, as proprietors, certify that we caused the land embraced in this plat to be surveyed, divided, mapped and dedicated as represented on this plat and that the road is for the use of the public; that the public utility easements are private easements and that all other easements are for the uses shown on the plat.

Witness

Michael W. Mills
 MICHAEL W. MILLS
Cheryl C. Collins
 CHERYL C. COLLINS
Herman W. Bateman
 HERMAN W. BATEMAN
Waynard P. Myers, Jr.
 WAYNARD P. MYERS, JR.
Larry L. Morton
 LARRY L. MORTON
 15287 Curtwood Drive
 Linden, Michigan 48451
Linda D. Morton
 LINDA D. MORTON
 15287 Curtwood Drive
 Linden, Michigan 48451
John J. Flick
 JOHN J. FLICK
 260 Blythe
 Linden, Michigan 48451
Linda S. Flick
 LINDA S. FLICK
 260 Blythe
 Linden, Michigan 48451

ACKNOWLEDGEMENTS

State of Michigan)
 Genesee County) s.s.

Personally came before me this 5 day of Dec., 1975, the above named Larry L. Morton and Linda D. Morton, his wife and John J. Flick and Linda S. Flick, his wife, to me known to be the persons who executed the foregoing instrument and acknowledged that they executed the same as their free act and deed.

Michael W. Mills
 MICHAEL W. MILLS Notary Public
 Genesee County

My commission expires: OCT. 21, 1978

CERTIFICATE OF MUNICIPAL APPROVAL

I certify that this plat was approved by the Township Board of the Township of Fenton, at a meeting held on October 21, 1974 and was reviewed and found to be in compliance with Act 288, P.A. 1967 and the Genesee County Health Department approved the plat October 21, 1974

Charles L. Muller
 CHARLES L. MULLER - CLERK

CERTIFICATE OF COUNTY ROAD COMMISSIONERS

Approved on Jan 29, 1976 as complying with Section 183 of Act 288, P.A. 1967 and the applicable published rules and regulations of the Board of Road Commissioners of Genesee County.

John P. Higgins Member
Preston E. Schmidt Member
Raymond M. Newman Member

COUNTY TREASURER'S CERTIFICATE

The records in my office show no unpaid taxes or special assessments for the five years preceding DECEMBER 17, 1975 involving the lands included in this plat.

William P. Barkley, Jr.
 William P. Barkley, Jr.,
 Treasurer, Genesee County

COUNTY DRAIN COMMISSIONER'S CERTIFICATE

Approved on 1-15-76 as complying with Section 192 of Act 288, P.A. 1967 and the applicable rules and regulations published by my office in the County of Genesee.

Anthony Ragnone
 Anthony Ragnone, Drain Commissioner

55165

COUNTY PLAT BOARD CERTIFICATE

This Plat has been reviewed and is approved by the Genesee County Plat Board on Feb 18, 1976 as being in compliance with all of the provisions of Act 288, P.A. 1967 and the Plat Board's applicable rules and regulations.

William P. Barkley, Jr. County Treasurer
Floyd J. McCree Register of Deeds
George H. Dunn County Clerk

DELTA LAND SURVEYING & ENGINEERING INC.