

# SUPERVISOR'S PLAT NO. 16

(OF STODDARD'S LANDING, LONG LAKE)

FENTON TWP. GENESEE CO. MICHIGAN

Examined and Approved

July 11 1934  
Deputy Auditor General

HEREBY CERTIFY THAT THIS COPY IS A TRUE COPY OF THE MAP OR PLAT FORWARDED THE REGISTER OF DEEDS FOR RECORDING.

### DEDICATION

KNOW ALL MEN BY THESE PRESENTS: - That I, Ray L. Parker, Supervisor, by virtue of the authority in me vested by Section 51, Act 172, Compiled Laws of Michigan, having been duly authorized by resolution of Township Board of Fenton Township, have caused the land embraced in the annexed plat to be surveyed, laid out and platted to be known as "SUPERVISOR'S PLAT No. 16", FENTON TOWNSHIP, GENESEE COUNTY, MICHIGAN.

Signed and Sealed in presence of  
Margaret Parker  
Catherine Clausen

Ray L. Parker (L.S.)  
Supervisor

STATE OF MICHIGAN ss.  
County of Genesee

On this 9th day of June 1934, before me, a Notary Public in and for said county, personally came Ray L. Parker, known to me to be the person who executed the above dedication and acknowledged the same to be his free act and deed as Supervisor.

Qualifier C. Lutz, Notary Public Genesee Co., Mich.  
My Commission Expires Aug. 28 1937

### SURVEYOR'S CERTIFICATE

I hereby certify that the plat hereon delineated is a correct one and that permanent monuments consisting of iron pipe at least one inch in outside diameter and at least fifteen inches long set in a concrete base at least five inches in diameter and at least forty-eight inches in depth have been planted at points marked thus (O) as shown on said plat.

Robert B. DeFalen, Registered Civil Engineer.  
W. L. Davis, Assistant.

### CERTIFICATE OF MUNICIPAL APPROVAL

This plat was approved by the Township Board of Fenton Township at a meeting held June 5-1934

D. Lutz, Township Clerk.

### CERTIFICATE OF APPROVAL (By County Board)

This plat was approved on the 11th day of June 1934.

John F. Baker, Judge of Probate.  
George F. Gundry, County Clerk.  
L. L. Pearson, County Treasurer.

### DESCRIPTION

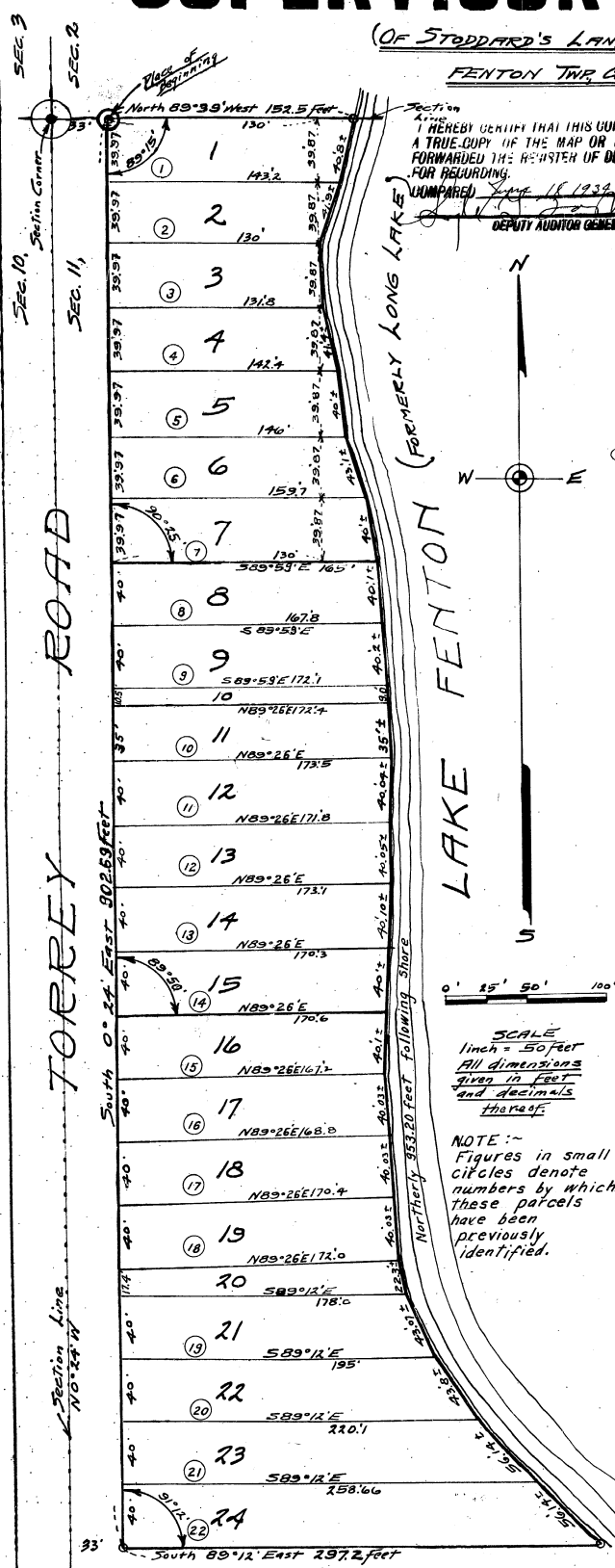
The lands embraced in the annexed plat of "SUPERVISOR'S PLAT No. 16" FENTON TOWNSHIP, GENESEE CO., MICHIGAN is described as follows: - Beginning at a point which lies South 89°39' East 33 feet from the North-West corner of Section 11, T. 51 N. R. 6 E., Genesee County, Michigan; Thence South 0°24' East 902.69 feet parallel to West line of Section 11; Thence South 89°12' East 297.2 feet; Thence Northerly 953.20 feet more or less following the shore of Lake Fenton (formerly Long Lake) to a point on Section line; Thence North 89°39' West 152.5 feet to place of beginning. Being part of Government Lot No. 6 of Section 11, T. 51 N. R. 6 E., Genesee County, Mich. Being at "STODDARD'S LANDING"

Register's Office  
Genesee County  
Plat of Supervisor's Plat No. 16

was recorded this 12 day of June A.D. 1934 at 1:12 O'Clock P.M. in Liber 17 of Plats

Page 22  
Margaret E. Deane, Register of Deeds

ORIGINAL ON FILE



W. Lutz  
6/10/34

SEC. 10, Section Corner

TORREY ROAD

LAKE FENTON (FORMERLY LONG LAKE)

SCALE  
1 inch = 50 feet  
All dimensions given in feet and decimals thereof

NOTE: - Figures in small circles denote parcels have been previously identified.

Section Line  
N 0° 24' W

South 89°12' East 297.2 feet