

"SUPERVISOR'S PLAT NO. 17"

(PART OF IRIS BEACH, LONG LAKE)

FENTON TWP,
GENESEE COUNTY, MICHIGAN.

Examined and Approved:

June 11 1937
W. L. Davis
 Deputy Auditor General

I HEREBY CERTIFY THAT THIS COPY IS A TRUE COPY OF THE MAP OR PLAT FORWARDED THE REGISTER OF DEEDS FOR RECORDING.

June 11 1937
W. L. Davis
 DEPUTY AUDITOR GENERAL

FILED IN AUDITOR GENERAL'S OFFICE:

June 15 1937
W. L. Davis
 DEPUTY AUDITOR GENERAL

COPIES
 Register's Office
 Genesee County, Mich.
 Plat of Supervisor's Plat #17

was Recorded this 12 day of
 June A.D. 1937 at 6:15 P.M.
 P. M. in Liber 17 of Plat
 on Page 23

Margaret C. Bennett
 Deputy Register of Deeds

SUPERVISOR'S CERTIFICATE

I hereby certify that the plat herein delineated is a correct one and that permanent monuments consisting of iron pipe at least one inch in outside diameter and at least fifteen inches long set in a concrete base at least four inches in diameter and forty-eight inches in depth have been planted at points marked thus (O) as thereon shown at all angles in the boundaries of the lands platted at all intersections of streets, and at the intersection of streets with boundaries of the lands platted as shown on said plat. Pipes not concreted are at points marked thus (o)

Robert B. D. Taylor Registered Civil Engineer.
W. L. Davis Assistant.

CERTIFICATE OF MUNICIPAL APPROVAL

This plat was approved by the Township Board of Fenton Township at a meeting held June 5 1937

D. G. Lutz Township Clerk.

CERTIFICATE OF APPROVAL (By County Board)

This plat was approved on the 11th day of June 1937

John F. Baker Judge of Probate.
George V. Rundry County Clerk.
L. L. Pearson County Treasurer.

NOTE: Figures in small circles denote numbers by which these parcels have been previously identified.

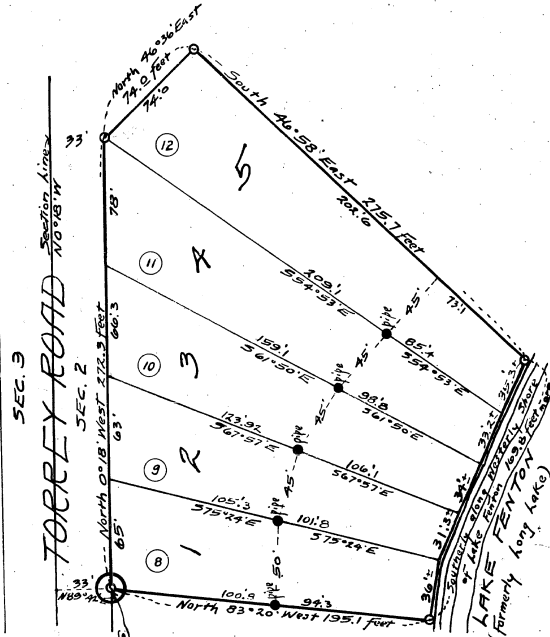
DEDICATION.
 KNOW ALL MEN BY THESE PRESENTS:— That I, *Ray L. Parker* Supervisor of Fenton Township, by virtue of the authority in me vested by Sec. 51 Act 172 Compiled Laws of 1929, having been duly authorized by resolution of Township Board of Fenton Township, have caused the land embraced in the annexed plat to be surveyed, laid out and platted to be known as "SUPERVISOR'S PLAT NO. 17", FENTON TOWNSHIP, GENESEE COUNTY, MICHIGAN.

Signed and Stated in Presence of
Margaret C. Bennett } *Ray L. Parker*
Catherine Clewaut } Supervisor.

STATE OF MICHIGAN }
 County of Genesee } ss.
 On this 9th day of June 1937, before me, a Notary Public in and for said County, personally came *Ray L. Parker* known to me to be the person who executed the above dedication and acknowledged the same to be his free act and deed as SUPERVISOR.
Dustan C. Lutz
 Notary Public, Genesee Co., Michigan.
 My Commission Expires Aug 28 1937

DESCRIPTION.

The land embraced in the annexed plat of "SUPERVISOR'S PLAT NO. 17", FENTON TOWNSHIP, GENESEE COUNTY, MICHIGAN is described as follows:— Beginning at a point which lies North or West 449.5 Feet along West line of Section 2 and thence North 89°42' East 33 Feet from the South-West corner of Section 2, T. 51 N. R. 6, Genesee County, Michigan.
 Thence North 0°18' West 272.3 feet;
 Thence North 46°36' East 74.0 feet;
 Thence Southerly along Westerly shore of Lake Fenton (formerly Long Lake) 169.8 feet to a point which lies S83°06' from place of beginning.
 Thence North 83°20' West 135.1 feet to place of beginning.
 Being in Government Lot No. 3 of Section 2, T. 51 N. R. 6.
 Being known as part of IRIS BEACH, LONG LAKE.



SCALE
 1 inch = 50 feet
 All dimensions are given in feet and decimals thereof.