

# "SUPERVISOR'S PLAT NO. 20"

OF PART OF GOVERNMENT LOTS NO. 6 & 7

## DESCRIPTION

The land embraced in the annexed plat of SUPERVISOR'S PLAT NO. 20 OF PART OF GOVERNMENT LOTS NO. 6 & 7, FRACTIONAL SECTION 14, FENTON TOWNSHIP, GENESSEE COUNTY, MICHIGAN is described as follows:-- From South-West Corner of Fractional Section 14, T. 5 N. - R. 6 E. Genessee County, Michigan, Running North 214.5 feet and thence North 74° East 606 feet and thence South 74° East 703.4 feet and thence South 8° 20' East 44 feet and thence North 74° East 193.5 feet and thence South 8° 20' East 131.75 feet and thence South 87° 47' East 849 feet across Long Lake to a concreted iron pipe monument and thence North 81° East 353.45 feet to a concreted iron pipe at place of beginning

THENCE FROM SAID PLACE OF BEGINNING North 69° 50' East 164.74 feet; Thence South 80° 17' East 122.1 feet; Thence South 13° 45' West 60 feet to West Corner of Lot No 18, "CASE'S ISLAND"; Thence South 13° 45' West 3.55 feet; Thence North 78° 37' West 110 feet; Thence South 78° 21' West 20 feet; Thence South 56° 45' West 64.75 feet; Thence South 70° 22' West 20.25 feet; Thence South 18° 40' West 60 feet; Thence South 15° 04' West 57.65 feet; Thence North 79° 08' West 0.92 feet; Thence South 63° 07' West 3.08 feet; Thence North 70° 53' West 60 feet; Thence North 29° 08' West 14.87 feet; Thence South 63° 44' West 6.85 feet; Thence North 56° 25' West 53.8 feet; Thence North 27° 39' East 42.1 feet; Thence South 70° 56' East 60 feet; Thence North 18° 40' East 103.9 feet to Place of Beginning, Being parts of Government Lots 6 & 7, Fractional Section 14, Fenton Township.

## CERTIFICATE OF MUNICIPAL APPROVAL

This plat was approved by the Township Board of Fenton Township at a meeting held May 1st 1935

D. L. Lutz Township Clerk

## FRACTIONAL SECTION 14

FENTON TOWNSHIP  
GENESEE COUNTY - MICHIGAN

## - SURVEYOR'S CERTIFICATE -

I HEREBY CERTIFY THAT The plat hereon delineated is a correct one and that permanent monuments, consisting of iron pipe at least one inch in outside diameter and at least fifteen inches long, set in a concrete base at least four inches in diameter and forty-eight inches in depth, have been planted or found at points marked thus (e) as thereon shown at all angles in the boundaries of the lands platted. Pipes not concreted are shown thus (c)

Robert O. DeFaulx Registered Civil Engineer  
William L. Davis Assistant Engineer.  
1935

## - CERTIFICATE OF APPROVAL - (BY COUNTY BOARD)

THIS PLAT WAS APPROVED ON THE 23rd DAY OF May 1935

John W. Baker Judge of Probate  
George J. Lindsey County Clerk  
G. G. Pearson County Treasurer

## DEDICATION

KNOW ALL MEN BY THESE PRESENTS:-- That I, RAY L. PARKER, Supervisor of FENTON TOWNSHIP, by virtue of the authority in me vested by Section 51, Act 172, Compiled Laws of 1929, having been duly authorized by resolution of the Township Board of Fenton Township, have caused the land embraced in the annexed plat to be surveyed, laid out and platted to be known as "SUPERVISOR'S PLAT NO. 20.", FENTON TOWNSHIP, GENESSEE COUNTY, MICHIGAN.

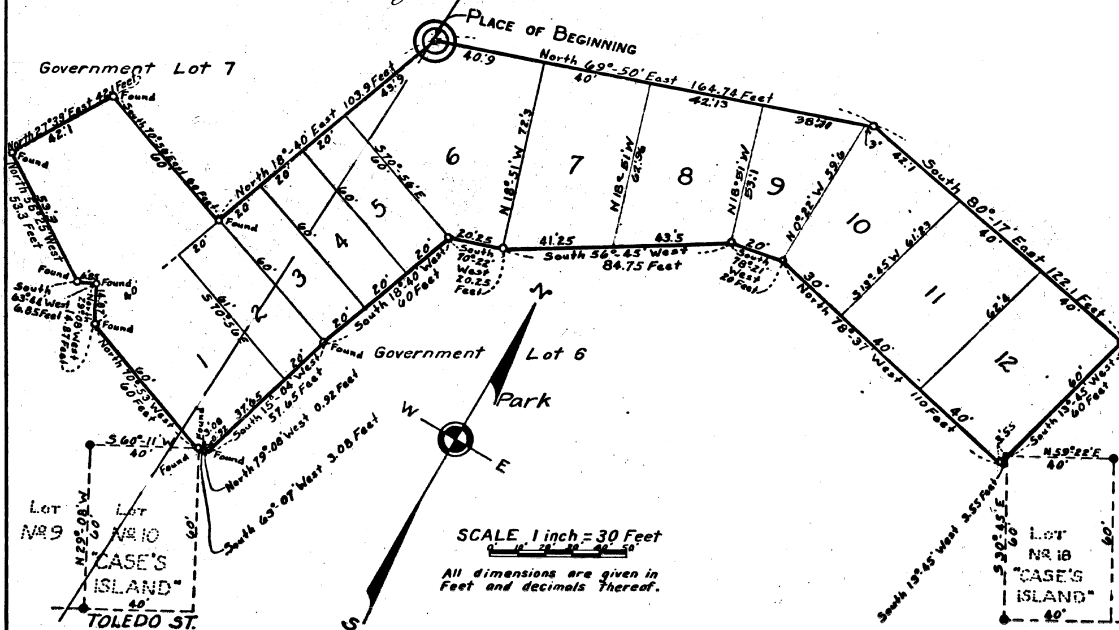
Signed and Sealed  
in Presence of

E. M. Beckwith Ray L. Parker (s.)  
D. A. Gould Supervisor

STATE OF MICHIGAN } s.s.  
COUNTY OF GENESSEE }

On this 21st day of May 1935, before me, a Notary Public, in and for said County, personally came Ray L. Parker known to me to be the person who executed the above dedication and acknowledged the same to be his free act and deed as Supervisor.

Quater C. Lutz  
Notary Public, Genessee Co., Mich.  
My Commission Expires Aug 28 - 1937



COPY  
Register's Office  
Genessee County } ss.  
Plat of Supervisor's Plat No. 20  
Fenton Township  
was recorded this 8th day of  
June A.D., 1935 at 10:37 O'clock  
4 M in Liber 17 of Plats  
in Page 25  
Margaret E. Wood  
County Register of Deeds.  
ORIGINAL ON FILE.

I HEREBY CERTIFY THAT THIS COPY IS A TRUE COPY OF THE MAP OR PLAT FORWARDED THE REGISTER OF DEEDS FOR RECORDING.

J. J. Hartman  
DEPUTY AUDITOR GENERAL

FILED IN AUDITOR GENERAL'S DEPT.

6/11/35  
J. J. Hartman  
DEPUTY AUDITOR GENERAL

Examined and Approved

6/17/35  
J. J. Hartman  
Deputy Auditor General