

Register's Office
Genesee County, Mich.

Ray L. Parker
DEPUTY AUDITOR GENERAL

Ray L. Parker
Deputy Auditor General

67-35
Fenton Twp.
June 27, 1935 at 10.39 O'clock
A. B. 17 of Plate
Margaret E. Reed
Deputy Register of Deeds

I HEREBY CERTIFY THAT THIS COPY IS A TRUE COPY OF THE MAP OR PLAT FORWARDED THE REGISTER OF DEEDS FOR RECORDING.
COMPLETED
Ray L. Parker
DEPUTY AUDITOR GENERAL

"SUPERVISOR'S PLAT No. 22"

OF PART OF THE FRACTIONAL EAST 1/2 OF THE FRACTIONAL NORTH EAST 1/4 OF FRACTIONAL SECTION 23, FENTON TOWNSHIP, GENESSEE CO., MICHIGAN

SCALE 1 inch = 20 feet
All dimensions are given in feet and decimals thereof.

DEDICATION

KNOW ALL MEN BY THESE PRESENTS: That, I, RAY L. PARKER, Supervisor of Fenton Township, by virtue of the authority in me vested by Section 51, Act 172, Compiled Laws of 1929, having been duly authorized by resolution of the Township Board of Fenton Township, have caused the land embraced in the annexed plat to be surveyed, laid out, and platted to be known as "SUPERVISOR'S PLAT No. 22," of Part of the Fractional East 1/2 of the Fractional North-East 1/4 of Fractional Section 23, Fenton Township, Genessee Co., Michigan,

Signed and Sealed
in Presence Of

Ray L. Parker (S)
Supervisor
E. J. Siskowitz
D. C. Gould

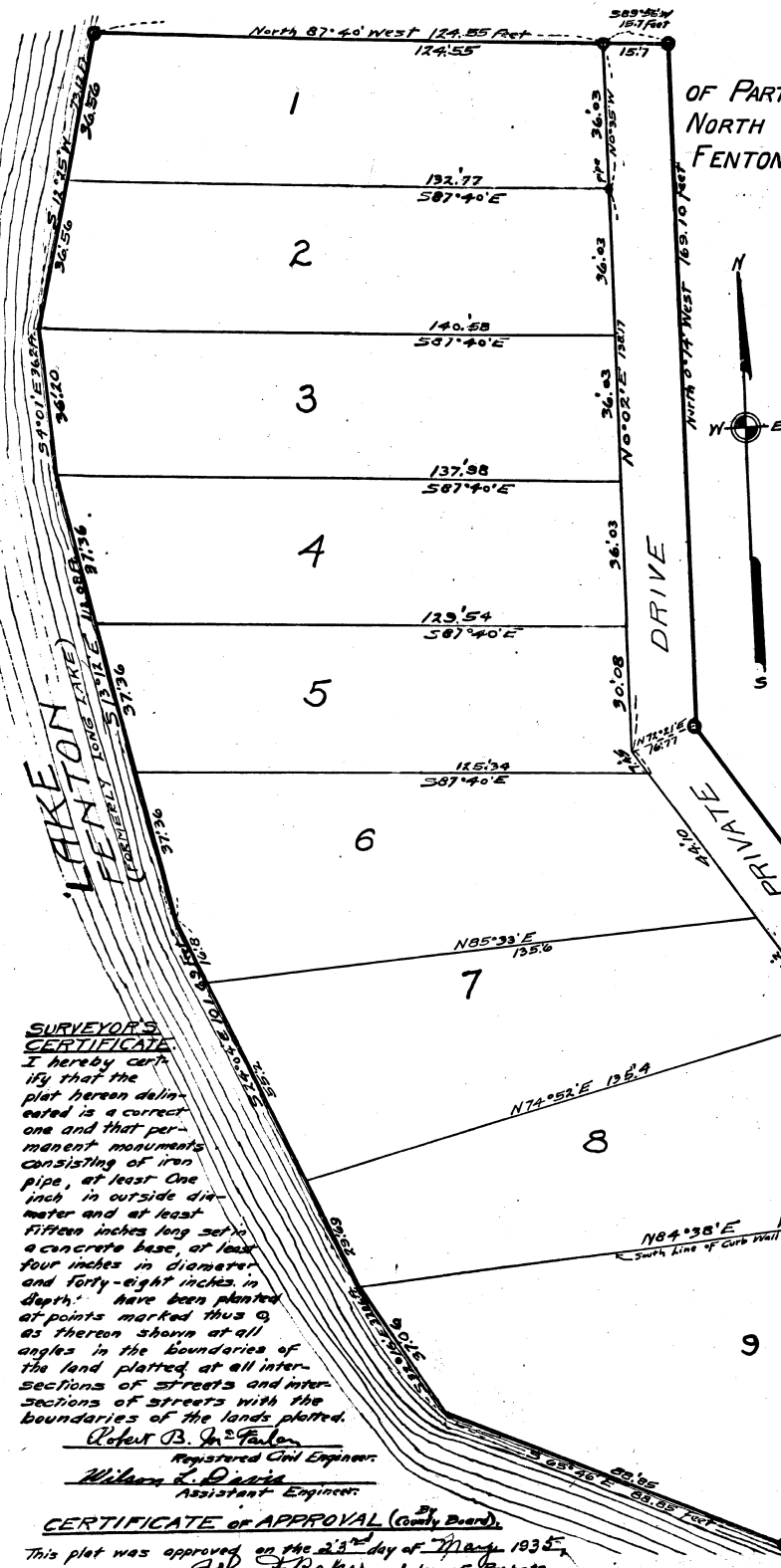
STATE OF MICHIGAN
COUNTY OF GENESSEE

On this 27th day of June, 1935, before me, a Notary Public in and for said County, personally came RAY L. PARKER known to me to be the person who executed the above dedication and acknowledged the same to be his free act and deed as SUPERVISOR.

Charles C. Smith
Notary Public, Genessee Co., Mich.
My Commission Expires Aug. 25, 1937

DESCRIPTION

The land embraced in the annexed plat of "SUPERVISOR'S PLAT No. 22" of Part of the Fractional East 1/2 of the Fractional North East 1/4 of Fractional Section 23, Fenton Township, Genessee Co., Michigan is described as follows:— Beginning of a concrete monument which has North 89 degrees 06 minutes West 172.63 feet along the Quarter Line and thence North 5 degrees 26 minutes West 130 feet and thence North 41 degrees 19 minutes West 364.84 feet from the East Quarter Corner of Fractional Section 23, T. 5N. R. 6 E., Genessee County, Michigan. Thence from said place of beginning North 35° 03' West 104.10 feet; Thence North 0° 14' West 169.10 feet; Thence North 87° 40' West 124.55 feet; Thence South 12° 25' West 73.12 feet and thence South 5° 01' East 36.20 feet and thence South 19° 12' East 112.08 feet and thence South 24° 04' East 101.69 feet and thence South 32° 16' East 37.06 feet and thence South 65° 46' East 88.85 feet along Easterly Shore of Lake Fenton (formerly Long Lake); Thence North 76° 48' East 103.13 feet to place of beginning. Being a part of the Fractional East 1/2 of the Fractional North East 1/4 of Fractional Section 23, T. 5N. R. 6 E., Genessee Co., Mich. lying North of "DART'S LANDING"



SURVEYOR'S CERTIFICATE
I hereby certify that the plat hereon delineated is a correct one and that permanent monuments consisting of iron pipe, at least one inch in outside diameter and at least fifteen inches long set in a concrete base, at least four inches in diameter and forty-eight inches in depth, have been planted at points marked thus @ as thereon shown at all angles in the boundaries of the land platted at all intersections of streets and intersections of streets with the boundaries of the lands platted.

Robert B. Ingham
Registered Civil Engineer
William L. Davis
Assistant Engineer

CERTIFICATE of APPROVAL (County Board)
This plat was approved on the 23rd day of June, 1935,
John H. Baker Judge of Probate.
A. G. Purvis County Treasurer.
George J. Gooding County Clerk.

CERTIFICATE of MUNICIPAL APPROVAL
This plat was approved by the Township Board of Fenton Township at a meeting held JULY 21st 1935
Ray L. Parker Township Clerk

COPY