

SUPERVISOR'S PLAT NO. 23A

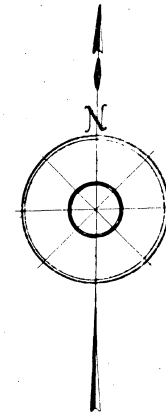
A REPLAT OF "WOODHULL PARK" AND
A PART OF THE S.E. FRACT. 1/4 OF SEC. 11, T5N, R6E

~ FENTON TOWNSHIP ~ GENESEE COUNTY ~ MICHIGAN ~

0 50 100 200 300 Feet

Scale 1 inch = 100 Feet

All Dimensions Are in Feet and Decimals



DEDICATION

KNOW ALL MEN BY THESE PRESENTS, That I, Robert G. Stoddard, Supervisor of Fenton Township, by virtue of authority in me vested by Section 51, Act 172, P.A. of 1929, having been duly authorized by the Township Board, have caused the land embraced in the annexed plat to be surveyed, laid out and platted to be known as SUPERVISOR'S PLAT NO. 23A, A REPLAT OF "WOODHULL PARK" AND A PART OF THE S.E. FRACT. 1/4 OF SEC. 11, T5N, R6E, RANGE 6 EAST, FENTON TOWNSHIP, GENESEE COUNTY, MICHIGAN

In the Presence of:

Maurice R. Matthews
Notary Public
Claude E. Nigoff

Robert G. Stoddard
Supervisor of Fenton Township

Register of Deeds
Earl M. Smith
County Clerk

STATE OF MICHIGAN } ss
COUNTY OF GENESEE } On this 4th day of November, 1943,
before me, a Notary Public in and for said County personally appeared the above named Robert G. Stoddard, Supervisor of Fenton Township, to me known to be the person who executed the above dedication, and acknowledged the same to be his free act and deed as such Supervisor

Maurice R. Matthews
Notary Public, Genesee Co., Mich.

My Commission Expires May 7, 1945

CERTIFICATE OF MUNICIPAL APPROVAL

This Plat was approved by the Township Board of the Township of Fenton at a meeting held on the 4th day of Nov., 1943.

Gustav C. Lutz
Township Clerk

APPROVAL BY COUNTY ROAD COMMISSION

Examined and Approved by Genesee County Road Commission on the 7th day of November, 1943.

Alfred Decker, Chairman
C.W. Buitard, Commissioner
Floyd Aker, Commissioner

CERTIFICATE OF APPROVAL BY COUNTY PLAT BOARD

Examined and Approved by Genesee County Plat Board on the 4th day of November, 1943.

Earl M. Smith, Chairman
O. Pearson White, County Treasurer
Earl M. Smith, Register of Deeds
Frances F. Dunn, County Clerk

SURVEYOR'S CERTIFICATE

I hereby certify that the plat hereon delineated is a correct one and that permanent metal monuments, consisting of iron bars not less than one-half inch in diameter and forty-eight inches in length encased in concrete at least four inches in diameter and forty-eight inches in depth have been placed at points marked thus "O" as shown thereon, at all angles in the boundaries of the lands platted (except the most northerly corner as noted). Iron pins exist at points marked thus "•".

A. C. Caldwell, Jr.
Professional Engineer #737

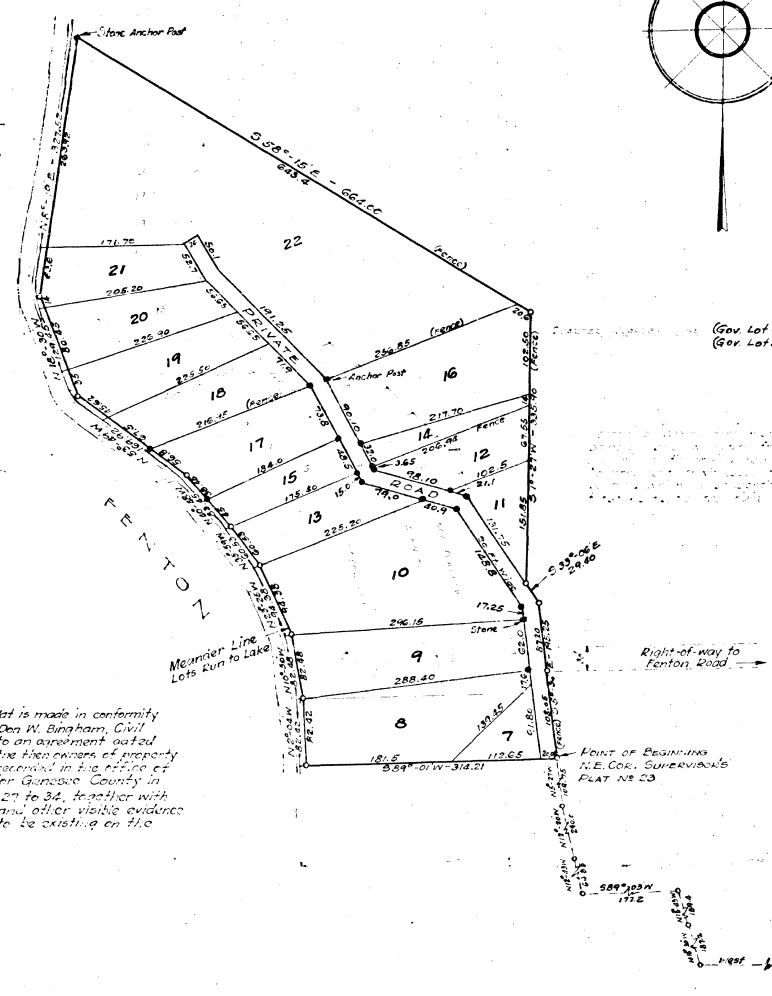
DESCRIPTION

The land in the annexed plat of SUPERVISOR'S PLAT NO. 23A, A REPLAT OF "WOODHULL PARK" AND A PART OF THE S.E. FRACT. 1/4 OF SEC. 11, T5N, R6E, FENTON TOWNSHIP, GENESEE COUNTY, MICHIGAN is described as follows: Beginning at the N.E. Corner of Supervisors' Plat No. 23 according to the plat thereof recorded in Liber 17 of Plats on page 28 5/16 of 1943 being according to said plat: West along Section line 441.3 Ft., thence N15°30'W being according to said plat 187.2 Ft., thence S15°23'W 189.4 Ft., thence S89°03'W 177.2 Ft., thence N12°43'W 64.85 Ft., thence N12°20'W 290.0 Ft., thence N5°27'W 109.75 Ft., from the S.E. Cor. of Sec. 11, T5N, R6E, thence from said point of beginning, S89°01'W along the north line of said plat 314.21 Ft., thence N2°04'W 82.42 Ft., thence N10°5'W 82.43 Ft., thence N23°25'W 94.38 Ft., thence N35°39'W 60.53 Ft., thence N40°48'W 82.45 Ft., thence N53°49'W 109.92 Ft., thence N18°30'W 129.45 Ft., thence N8°19'E 32.52 Ft., thence S55°18'E 66.40 Ft., thence S1°21'W 335.96 Ft., thence S35°16'E 29.40 Ft., thence S45°26'E 126.25 Ft. to the point of beginning, and including all the land between the northerly and southerly lines produced to the water's edge of Lake Fenton, and being a part of Government Lots 4 and 5 of Sec. 11, T5N, R6E.

IMPROVED REAL PROPERTY IS A PART OF THE SUPERVISOR'S PLAT NO. 23A, A REPLAT OF "WOODHULL PARK" AND A PART OF THE S.E. FRACT. 1/4 OF SEC. 11, T5N, R6E, FENTON TOWNSHIP, GENESEE COUNTY, MICHIGAN.

Examined and Approved
Superintendent of Deeds
Earl M. Smith

FILED IN AUDITOR GENERAL'S OFFICE
November 9, 1943
Superintendent of Deeds
Earl M. Smith



SURVEYOR'S NOTES: This plat is made in conformity with a survey made by Dea W. Bingham, Civil Engineer, and attached to an agreement dated August 20, 1930 between the then owners of property therein described and recorded in the office of the Register of Deeds for Genesee County in Deed Volume 524, Pages 27 to 34, together with certain stakes, pegs, and other visible evidence of occupation as found to be existing on the ground.

28921