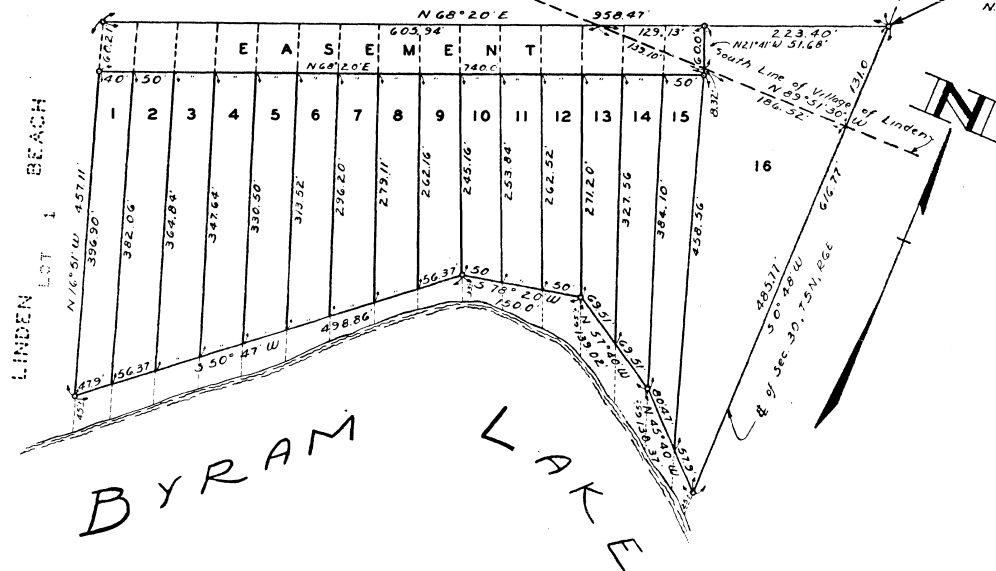


SUPERVISOR'S PLAT OF HYATT'S ACRES NO. 1

PART OF GOV'T. LOT 1 OF SECTION 30, T5N, R6E
MICHIGAN MERIDIAN TOWNSHIP OF FENTON AND
VILLAGE OF LINDEN, GENESEE COUNTY, MICHIGAN.

SCALE 1" = 100 FEET



PLACE OF BEGINNING
S. 0° 48' W. 1189.0' from the
N.E. Cor. Sec. 30, T5N, R6E.

Register's Office
Genesee County, ss.
Plat of Supervisor's Plat of Hyatt's Acres No. 1
was recorded this 13 day of July
A.D., 1949 at 12 o'clock
P.M. in Liber 21 of Plats
in Page 13
Earl M. Smith
Register of Deeds

I HEREBY CERTIFY THAT THIS COPY IS
A TRUE COPY OF THE MAP OR PLAT
FORWARDED TO THE REGISTER OF DEEDS
FOR RECORDING.

COMPARED July 12, 1949
Mayme Jewell Purdy DEPUTY AUDITOR GENERAL

Examined and Approved
July 12, 1949

Mayme Jewell Purdy Deputy Auditor General

FILED IN AUDITOR GENERAL'S DEPT.
July 15, 1949

Mayme Jewell Purdy DEPUTY AUDITOR GENERAL

-DEDICATION

KNOW ALL MEN BY THESE PRESENTS, That I, Robert G. Stoddard, Supervisor of Fenton Township, by virtue of authority in me vested by Section 51 Act 172, P.A. 1929, having been duly authorized by the Township Board of the Township of Fenton, have caused the land embraced in the annexed plat to be surveyed, laid out and platted to be known as "SUPERVISOR'S PLAT OF HYATT'S ACRES NO. 1" Part of Gov't. Lot 1 of Section 30 T5N R6E Michigan Meridian, Township of Fenton, and Village of Linden, Genesee County, Michigan, and that the easement as shown on said plat is now being used for ingress and egress to the property by the lot owners.

Witnesses:

Floyd W. Gamber
Floyd W. Gamber
Stanley Kirshman
Stanley Kirshman

STATE OF MICHIGAN) ss.
County of Genesee)

On this 14 day of July 1949, before me, a notary public in and for said county, personally appeared the above named Robert G. Stoddard, Supervisor of Fenton Township, known to me to be the person who executed the above dedication and who acknowledged the same to be his free act and deed as such supervisor of said township.

My Commission Expires Aug 2, 1949
Gustave C. Lutz
Notary Public, Genesee Co., Michigan.

DESCRIPTION OF LAND PLATTED

The land embraced in the annexed plat of "SUPERVISOR'S PLAT OF HYATT'S ACRES NO. 1" Part of Gov't. Lot 1 of Section 30 T5N R6E Michigan Meridian, Township of Fenton and Village of Linden, Genesee County, Michigan is described as follows: Beginning at a point on the east line of section S. 0° 48' W. 1189.0 feet from the NE corner of said Section 30, thence S. 0° 48' W. 616.77 feet, thence N. 15° 40' W. 138.37 feet, thence N. 57° 40' W. 439.02 feet, thence S. 78° 20' W. 150 feet, thence S. 50° 47' W. 498.86 feet to the SE corner of plat of Linden Beach, thence N. 16° 51' W. along east line of said plat 157.11 feet, thence N. 66° 20' E. 958.47 feet to the place of beginning. The lots as shown include the land to the low water mark of Byram Lake between the side lot lines extended.

CERTIFICATE OF MUNICIPAL APPROVAL- FENTON TOWNSHIP

This plat was approved by the Township Board of the Township of Fenton at a meeting held 11th July 1949

Gustav C. Lutz
Gustav C. Lutz- Township Clerk

CERTIFICATE OF MUNICIPAL APPROVAL- LINDEN VILLAGE

This plat was approved by the Village of Linden at a meeting held June 9 1949.

Decola L. Jepsen
Decola L. Jepsen- Village Clerk

CERTIFICATE OF APPROVAL BY BOARD OF COUNTY ROAD COMMISSIONERS

This plat has been examined and was approved on the 11th day of July 1949 by the Genesee County Board of Road Commissioners.

C. E. Bullard
C. E. Bullard- Commissioner
Harold Berg
Harold Berg- Commissioner
Ivan H. Verma
Ivan H. Verma- Commissioner

CERTIFICATE OF APPROVAL BY COUNTY BOARD

This plat was approved on the 11th day of July 1949.

Earl M. Smith
Earl M. Smith- Reg. of Deeds.
James F. Barkey
James F. Barkey- County Treasurer
George G. Dunn
George G. Dunn- County Clerk

SURVEYOR'S CERTIFICATE

I hereby certify that the plat hereon delineated is a correct one and that permanent metal monuments consisting of bars not less than one half inch in diameter and 18 inches in length encased in a concrete cylinder at least four inches in diameter and 18 inches in depth have been placed at all points marked thus "o" as thereon shown at all angles in the boundaries of the land platted, at the intersections of streets, and at the intersections of streets with the boundaries of the plat as shown on said plat.

Clarence F. Alkman
Clarence F. Alkman- Reg. Surveyor #5132
Flint, Michigan