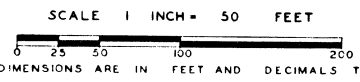


# SUPERVISOR'S PLAT OF LOG CABIN POINT

**DEDICATION**

KNOW ALL MEN BY THESE PRESENTS, That I, Robert G. Stoddard, Supervisor of Fenton Township, by virtue of authority in me vested by Section 51, Act 172, P.A. 1929, having been duly authorized by the Township Board of the Township of Fenton, have caused the Land embraced in the annexed plat to be surveyed, laid out and platted, to be known as "SUPERVISOR'S PLAT OF LOG CABIN POINT" Part of the NE Frac. 1/4 Sec. 14, T5N R6E Michigan Meridian, and a Replat of Lots 12 to 30 inclusive of Log Cabin Point, Fenton Township, Genesee County, Michigan.

PART OF NE FRAC. 1/4 SEC. 14 T5N R6E MICHIGAN MERIDIAN  
AND A REPLAT OF LOTS 12 TO 30 INCLUSIVE OF LOG CABIN POINT  
FENTON TOWNSHIP GENESSEE COUNTY MICHIGAN



**SURVEYOR'S CERTIFICATE**

I hereby certify that the plat herein delineated is a correct one and that permanent metal monuments consisting of bars not less than one half inch in diameter and 48 inches in length enclosed in a concrete cylinder at least four inches in diameter and 48 inches in depth, have been placed at points marked thus "M" as thereon shown at all angles in the boundaries of the land platted, at all angles in the driveway easement as shown, and at the intersections of said easement with the boundaries of the plat as shown on said plat.

Witnesses  
Robert G. Stoddard  
 Robert G. Stoddard  
 Fenton Township Supervisor

Julia Sweeney  
 Julia Sweeney

**CERTIFICATE OF MUNICIPAL APPROVAL**

This plat was approved by the Township Board of the Township of Fenton at a meeting held on the 4th day of Sept. 1947.

Gustav C. Lutz  
 Gustav C. Lutz - Township Clerk.

**CERTIFICATE OF APPROVAL BY COUNTY BOARD**

This plat was approved on the 25th day of September 1947.

Marie C. McCara  
 Marie C. McCara - County Treasurer

George U. Dunn  
 George U. Dunn - County Clerk

**DESCRIPTION OF LAND PLATTED**

The land embraced in the annexed plat of "SUPERVISOR'S PLAT OF LOG CABIN POINT" Part of the NE Frac. 1/4 Sec. 14, T5N R6E Michigan Meridian, and a Replat of Lots 12 to 30 inclusive of Log Cabin Point, Fenton Township, Genesee County, Michigan is described as follows: Beginning West 111.3 feet and S. 11° 56' E. 736.8 feet, and S. 80° 00' E. 37.5 feet, and S. 23° 40' E. 213.4 feet, and S. 66° 30' W. 502.1 feet, and S. 27° 01' W. 221.51 feet from the NE corner of said Sec. 14, thence W. 10° 47' W. 211.6 feet, thence S. 55° 15' W. 185.01 feet, thence S. 50° 51' W. 298.33 feet, thence S. 23° 29' E. 121.01 feet, thence S. 81° 11' E. 288.0 feet, thence S. 88° 32' E. 205.0 feet, thence N. 82° 23' E. 157.25 feet, thence N. 66° 23' E. 156.01 feet to the place of beginning. The lots as shown include the land to the low water mark between the side lines of said lots extended from the traverse line to the said low water mark.

STATE OF MICHIGAN)  
 County of Genesee)

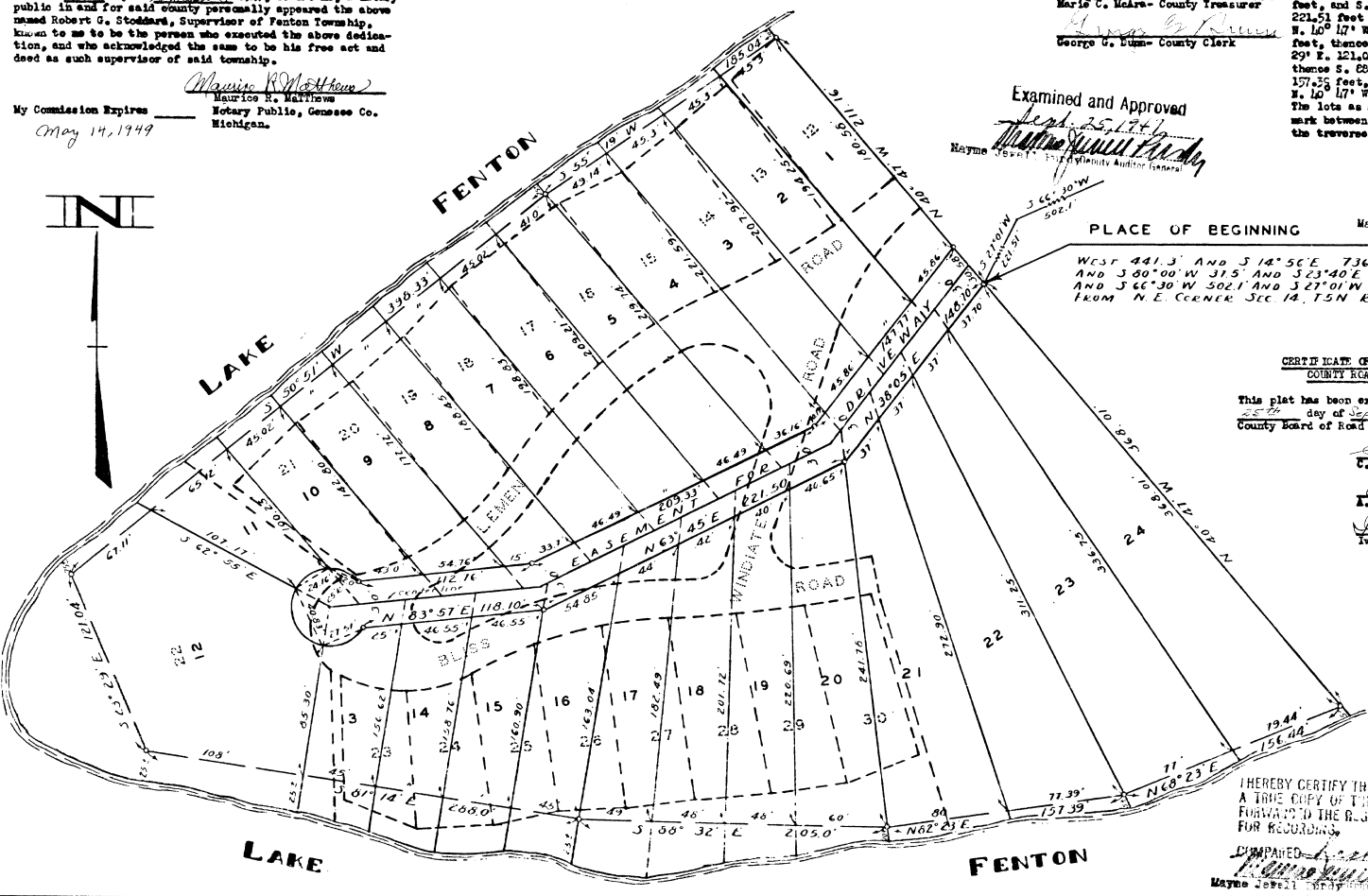
On this 4th day of September 1947, before me, a notary public in and for said county personally appeared the above named Robert G. Stoddard, Supervisor of Fenton Township, known to me to be the person who executed the above dedication, and who acknowledged the same to be his free act and deed as such supervisor of said township.

Maurice R. Matthews  
 Maurice R. Matthews  
 Notary Public, Genesee Co. Michigan.

My Commission Expires May 14, 1949

Examined and Approved  
Mayne Jewell  
 Mayne Jewell - Deputy Auditor General

FILED IN AUDITOR GENERAL'S DEPT.  
Sept. 25, 1947  
Mayne Jewell  
 Mayne Jewell - Deputy Auditor General



**CERTIFICATE OF APPROVAL BY BOARD OF COUNTY ROAD COMMISSIONERS**

This plat has been examined and was approved on the day of September 1947 by the Genesee County Board of Road Commissioners.

C. W. Eullard - Commissioner  
A. Harold Bergh - Commissioner  
Ivan H. Verma - Commissioner

COPY  
 Registrar's Office  
 Genesee County, ss.  
 Plat of Supervisor's Plat of Log Cabin Point  
 was Record'd this 25th day of Sept. A.D. 1947 at Fenton Mich.  
 on Page 2  
Donald S. Johnson  
 REGISTRAR OF DEEDS

I HEREBY CERTIFY THAT THIS COPY IS A TRUE COPY OF THE ORIGINAL PLAT FORWARDED TO THE REGISTER OF DEEDS FOR RECORDING.

Mayne Jewell  
 Mayne Jewell - Deputy Auditor General

10908