

Aug 18-1923
J. L. Howell

James
Superior Plat
of Ponemah Beach
Aug 16, 1923
Earl M. Smith

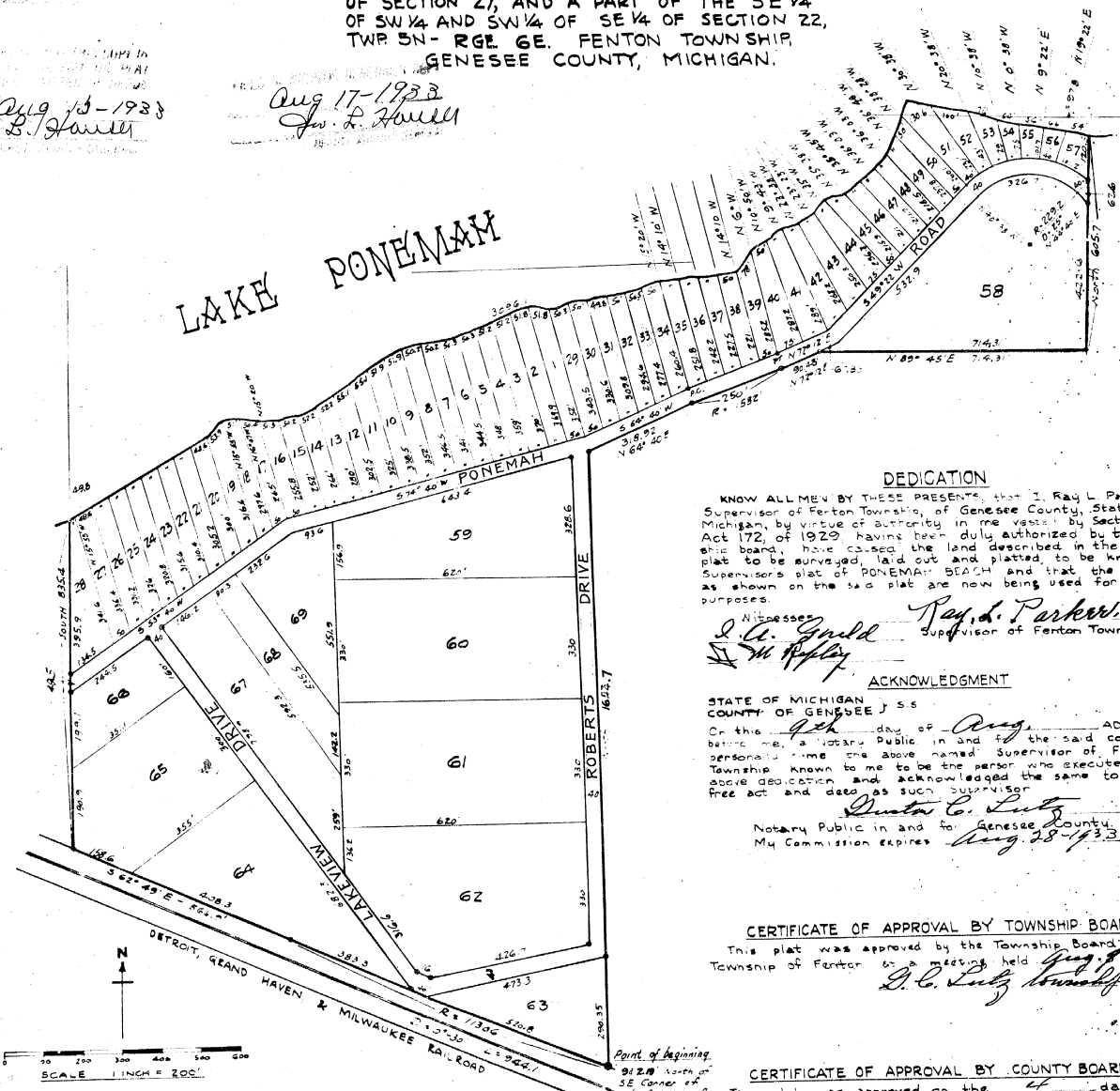
SUPERVISOR'S PLAT
OF

PONEMAH BEACH

BEING A PART OF THE E 1/2 OF THE NW 1/4
OF SECTION 27, AND A PART OF THE SE 1/4
OF SW 1/4 AND SW 1/4 OF SE 1/4 OF SECTION 22,
TWP 5N - RGE 6E. FENTON TOWNSHIP,
GENESEE COUNTY, MICHIGAN.

Aug 13-1923
J. L. Howell

Aug 17-1923
J. L. Howell



DEDICATION

KNOW ALL MEN BY THESE PRESENTS, that I, Ray L. Parker, Supervisor of Fenton Township, of Genesee County, State of Michigan, by virtue of authority in me vested by Section 51, Act 172, of 1923, having been duly authorized by the town ship board, have caused the land described in the annexed plat to be surveyed, laid out and platted, to be known as Supervisor's plat of PONEMAH BEACH and that the streets as shown on the said plat are now being used for such purposes.

Witnesses
Ray L. Parker, Supervisor of Fenton Township.
J. L. Gault, Notary Public.
J. M. Rappley, Notary Public.

ACKNOWLEDGMENT

STATE OF MICHIGAN
COUNTY OF GENESEE J 5 S
On this 14th day of Aug, AD 1923
before me, a Notary Public in and for the said county personally came the above named Supervisor of Fenton Township known to me to be the person who executed the above dedication and acknowledged the same to be free act and deed as such supervisor.
Dwight C. Lutz
Notary Public in and for Genesee County,
My Commission expires Aug 28-1933

CERTIFICATE OF APPROVAL BY TOWNSHIP BOARD

This plat was approved by the Township Board of the Township of Fenton at a meeting held Aug 17-1923
D. C. Lutz, Notary Public

CERTIFICATE OF APPROVAL BY COUNTY BOARD

This plat was approved on the 14th day of August 1923
George J. Smalley, Judge of Probate,
D. P. Veers, County Clerk,
George J. Smalley, County Treasurer.

DESCRIPTION OF LAND PLATTED

The land embraced in the annexed plat of Supervisor's Plat of PONEMAH BEACH is described as follows: A part of Sections 22 and 27, Township 5N, Range 6E, Fenton Township, Genesee County, Michigan, beginning at a point 912.19' North of the Southeast corner of the East one-half of the Northwest quarter of the said Section 27, running North 1653.7, thence N. 60° 40' E. 318.92', thence to the right around a curve of radius of 1582' a distance of 250', thence N. 72° 12' E. a distance of 90.43', thence N. 89° 45' E. a distance of 714.31', thence North a distance of 605.7' to the South shore of Lake Ponemah, thence Westward and Southwardly along said shore line a distance of 3096.11' thence South a distance of 836.4', thence S. 62° 49' E. a distance of 566.9', thence to the left around a curve of radius of 11506' a distance of 944.1' to place of beginning.

SURVEYOR'S CERTIFICATE

I hereby certify that the plat hereon delineated is a correct one and that permanent metal monuments of not less than one inch in diameter and 4 1/2 inches in length set in a concrete base of at least four inches in diameter and forty-eight inches in depth have been placed at points marked thus: * as thereon shown, at all intersections of the boundaries of the land platted, at all intersections of streets with the boundaries of the plat as shown on the said plat unless otherwise indicated.
Smith
Registered Civil Engineer.