

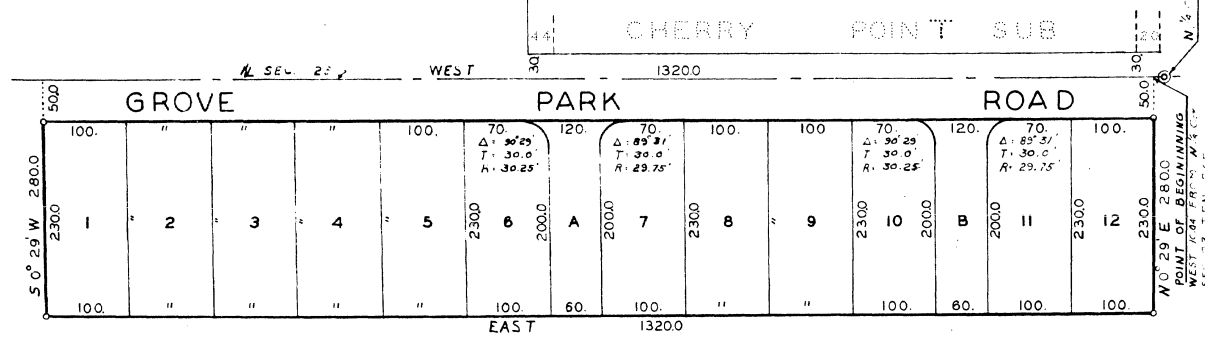
SWANEE ACRES

PART OF THE NE 1/4 OF NW 1/4 SECTION 23 T 5N-R 6E
FENTON TOWNSHIP GENESSEE COUNTY MICHIGAN

SCALE 1" = 100'



ALL DIMENSION ARE IN FEET AND DECIMALS THEREOF



DEDICATION

KNOW ALL MEN BY THESE PRESENTS, THAT WE, HARVEY E. SWANEBECK AND HELEN H. SWANEBECK, HIS WIFE, AND WILLIAM M. SWANEBECK, A SINGLE MAN, AND MYRTLE M. SCHMID, AS PROPRIETORS HAVE CAUSED THE LAND EMBRACED IN THE ANNEXED PLAT TO BE SURVEYED, LAID OUT AND PLATTED, TO BE KNOWN AS "SWANEE ACRES", PART OF THE NE 1/4 NW 1/4 SECTION 23, T 5N-R 6E, FENTON TWP., GENESSEE COUNTY, MICHIGAN, AND THAT THE ROAD AS SHOWN ON SAID PLAT IS HEREBY DEDICATED TO THE USE OF THE PUBLIC.

WITNESSES:
John C. Mackie
JOHN C. MACKIE
Bernard A. Henderson
BERNARD A. HENDERSON
Darwin L. Hauglie
DARWIN L. HAUGLIE

Harvey E. Swanebeck
HARVEY E. SWANEBECK
Helen H. Swanebeck
HELEN H. SWANEBECK
William M. Swanebeck
WILLIAM M. SWANEBECK
Myrtle M. Schmid
MYRTLE M. SCHMID

I hereby certify this copy is a true copy of map on file forwarded the Register of deeds for recording.
Date July 8, 1957
FILED IN THE REGISTER GENERAL'S DEPT.
Date July 16, 1957
EXAMINED AND A. O. J. V. D.
Date July 8, 1957
James P. Barkey
Auditor General
by J. L. MacGregor

DESCRIPTION OF LAND PLATTED

THE LAND EMBRACED IN THE ANNEXED PLAT OF "SWANEE ACRES", PART OF THE NE 1/4 NW 1/4 SECTION 23, T 5N-R 6E, FENTON TWP., GENESSEE COUNTY, MICHIGAN, IS DESCRIBED AS FOLLOWS: BEGINNING AT A POINT IN THE NORTH LINE OF SECTION 23, T 5N-R 6E, THAT IS WEST 10.00 FT. FROM THE NORTH 1/4 CORNER OF SAID SECTION 23, THENCE WEST ALONG SAID NORTH SECTION LINE 1320.0 FT. THENCE S 0° 29' W 280.0 FT. THENCE EAST PARALLEL TO SAID NORTH SECTION LINE 1320.0 FT. THENCE N 0° 29' E 280.0 FT. TO THE PLACE OF BEGINNING, CONTAINING 12 NUMBERED LOTS AND 2 LETTERED LOTS A&B.

COUNTY TREASURER'S CERTIFICATE RELATING TO TAXES

Office of the County Treasurer, Genessee County, Michigan.
I hereby certify that there are no tax liens or titles held by the State on the lands described hereon, and that there are no tax liens or titles held by individuals on said lands for the five years preceding the 16th day of July, 1957, and that the taxes for said period of five years are paid as shown by the records of this office. This certificate does not apply to taxes, if any, now in process of collection by township, city, or village collection officers.

James P. Barkey
James P. Barkey, County Treasurer

STATE OF MICHIGAN)
COUNTY OF GENESSEE)

ON THIS 12 DAY OF June, 1957, BEFORE ME, A NOTARY PUBLIC IN AND FOR SAID COUNTY, PERSONALLY APPEARED THE ABOVE NAMED HARVEY E. SWANEBECK AND HELEN H. SWANEBECK, HIS WIFE, AND WILLIAM M. SWANEBECK, A SINGLE MAN, AND MYRTLE M. SCHMID, KNOWN TO ME TO BE THE PERSONS WHO EXECUTED THE ABOVE DEDICATION, AND WHO ACKNOWLEDGED THE SAME TO BE THEIR FREE ACT AND DEED

BY COMMISSION EXPIRED NOVEMBER 30, 1958

John C. Mackie
JOHN C. MACKIE, NOTARY PUBLIC
GENESSEE COUNTY

CERTIFICATE OF APPROVAL BY COUNTY BOARD

THIS PLAT WAS APPROVED ON THE 12 DAY OF June, 1957.
Earl M. Smith
EARL M. SMITH-REGISTER OF DEEDS
George J. Dunn COUNTY CLERK
Bernard E. O'Brien COUNTY COMMISSIONER

CERTIFICATE OF MUNICIPAL APPROVAL

THIS PLAT WAS APPROVED BY THE TOWNSHIP BOARD OF THE TOWNSHIP OF FENTON, AT A MEETING HELD ON THE 17th DAY OF June, 1957.
Earl M. Smith
E. C. LUTZ TOWNSHIP CLERK

CERTIFICATE OF APPROVAL BY BOARD OF COUNTY ROAD COMMISSIONERS

THIS PLAT HAS BEEN EXAMINED AND WAS APPROVED ON THE 25th DAY OF June, 1957 BY THE GENESSEE COUNTY BOARD OF ROAD COMMISSIONERS.
C. M. Dullard COMMISSIONER
A. Harold Bergh COMMISSIONER
Robert G. Stoddard COMMISSIONER

COPY
Register's Office
Genessee County
Plat of Swanee
Acres
was Recorded this 9 day of July A.D., 1957 at 9:30 clock
AM in Liber 32 of Plat
on Page 36
John C. Mackie
Register of Deeds
ORIGINAL ON FILE

SURVEYOR'S CERTIFICATE

I HEREBY CERTIFY THAT THE PLAT HEREON DELINEATED IS A CORRECT ONE, AND THAT METAL MONUMENTS CONSISTING OF BARS ONE-HALF INCH IN DIAMETER AND 36 INCHES IN LENGTH, ENCASED IN A CONCRETE CYLINDER 4 INCHES IN DIAMETER AND 36 INCHES IN DEPTH HAVE BEEN PLACED AT ALL POINTS MARKED THUS "M" AS THEREON SHOWN AT ALL ANGLES IN THE PLAT BOUNDARIES, AT THE INTERSECTION OF STREETS, AND AT THE INTERSECTION OF STREETS WITH THE BOUNDARIES OF THE PLAT AS SHOWN ON SAID PLAT.

John C. Mackie
JOHN C. MACKIE, R.L.S. #7434

39558