

SWANEE BEACH PLAT NO. 1

A REPLAT OF PART OF OUTLOT "C" AND A REPLAT OF PART OF BLOCKS 13 AND 14 OF "SWANEE BEACH PLAT," SECTION 23 T5N-R6E, FENTON TOWNSHIP, GENESSEE COUNTY, MICHIGAN. SCALE 1" = 80'



ALL DIMENSIONS ARE IN FEET AND DECIMALS THEREOF
ALL CURVES ARE CHORD MEASUREMENTS
ALL LOTS EXTEND TO EDGE OF WATER

DESCRIPTION OF LAND PLATTED

THE LAND EMBRACED IN THE ANNEXED PLAT OF "SWANEE BEACH PLAT NO. 1," A REPLAT OF PART OF OUTLOT "C" AND A REPLAT OF PART OF BLOCKS 13 AND 14 OF SWANEE BEACH PLAT, SECTION 23, T5N R6E, FENTON TOWNSHIP, GENESSEE COUNTY, MICHIGAN, IS DESCRIBED AS FOLLOWS: BEGINNING AT A POINT IN THE EAST LINE OF SWANEE BEACH ROAD AS PLATTED, SAID POINT BEING 213.59 FEET SOUTH, AND 360 FEET EAST OF THE CENTER OF SAID SECTION 23, THENCE FROM THIS PLACE OF BEGINNING, WEST 66 FEET, THENCE NORTH 160 FEET, THENCE TO THE LEFT ON A CURVE (RADIUS 223.47 FEET, CENTRAL ANGLE 11° 50') LONG CHORD BEARING AND DISTANCE N 5° 55' W 46.08 FEET, THENCE N 11° 50' W 418.25 FEET, THENCE TO THE RIGHT ON A CURVE (RADIUS 344.79 FEET, CENTRAL ANGLE 20° 20') LONG CHORD BEARING AND DISTANCE N 1° 40' W 121.72 FEET, THENCE N 8° 30' E 320 FEET, THENCE ON A CURVE TO THE RIGHT (RADIUS 230.41 FEET, CENTRAL ANGLE 33° 50') LONG CHORD BEARING AND DISTANCE N 25° 25' E 134.08 FEET, THENCE N 42° 20' E 102.85 FEET, THENCE S 70° 06' E 403.12 FEET, THENCE S 26° W 170 FEET, THENCE S 55° 41' W 196.26 FEET, THENCE N 70° 06' W 170 FEET, THENCE S 8° 44' W 120.0 FEET, THENCE S 6° 56' E 181.68 FEET, THENCE S 11° 50' E 492.17 FEET, THENCE SOUTH 240 FEET, THENCE WEST 250 FEET TO THE PLACE OF BEGINNING. THIS PLAT CONTAINS THIRTEEN NUMBERED LOTS, AND ONE OUTLOT "E".

CERTIFICATE OF APPROVAL BY COUNTY BOARD

THIS PLAT WAS APPROVED ON THE 27 DAY OF February 1957.

CERTIFICATE OF MUNICIPAL APPROVAL

THIS PLAT WAS APPROVED BY THE TOWNSHIP BOARD OF THE TOWNSHIP OF FENTON, AT A MEETING HELD ON THE 20 DAY OF Feb. 1957.

G. C. Lutz
G. C. LUTZ, TOWNSHIP CLERK

Earl M. Smith
EARL M. SMITH-REGISTER OF DEEDS
James P. Barkey
JAMES P. BARKEY-COUNTY TREASURER
George C. Dunn
GEORGE C. DUNN-COUNTY CLERK
B. E. O'Brien
B. E. O'BRIEN-DRAIN COMMISSIONER

SURVEYOR'S CERTIFICATE

I HEREBY CERTIFY THAT THE PLAT HEREON DELINEATED IS A CORRECT ONE, AND THAT PERMANENT METAL MONUMENTS CONSISTING OF BARS NOT LESS THAN ONE-HALF INCH IN DIAMETER AND 36 INCHES IN LENGTH ENCASED IN CONCRETE CYLINDER AT LEAST FOUR INCHES IN DIAMETER AND 36 INCHES IN DEPTH HAVE BEEN PLACED AT ALL POINTS MARKED THUS "O" AS THEREON SHOWN AT ALL ANGLES IN THE PLAT BOUNDARIES AT THE INTERSECTIONS OF STREETS AND AT THE INTERSECTION OF STREETS WITH THE BOUNDARIES OF THE PLAT AS SHOWN ON SAID PLAT.

John C. Mackie
JOHN C. MACKIE, R.L.S. #7434

CERTIFICATE OF APPROVAL BY BOARD OF COUNTY ROAD COMMISSIONERS

THIS PLAT HAS BEEN EXAMINED AND WAS APPROVED ON THE 31 DAY OF Feb. 1957 BY THE GENESSEE COUNTY BOARD OF ROAD COMMISSIONERS.

C.M. Bullard
C.M. BULLARD - COMMISSIONER
A. Harold Berg
A. HAROLD BERG - COMMISSIONER
Robert G. Toddard
ROBERT G. TODDARD - COMMISSIONER

COUNTY TREASURER'S CERTIFICATE RELATING TO TAXES

OFFICE OF THE COUNTY TREASURER, GENESSEE COUNTY, MICHIGAN

I HEREBY CERTIFY THAT THERE ARE NO TAX LIENS OR TITLES HELD BY THE STATE ON THE LANDS DESCRIBED HEREON, AND THAT THERE ARE NO TAX LIENS OR TITLES HELD BY INDIVIDUALS ON SAID LANDS FOR THE FIVE YEARS PRECEDING THE 27 DAY OF Feb. 1957, AND THAT TAXES FOR SAID PERIOD OF FIVE YEARS ARE PAID AS SHOWN BY THE RECORDS OF THIS OFFICE. THIS CERTIFICATE DOES NOT APPLY TO TAXES, IF ANY, NOW IN PROCESS OF COLLECTION BY TOWNSHIP, CITY OR VILLAGE COLLECTION OFFICERS.

James P. Barkey
JAMES P. BARKEY-COUNTY TREASURER

Register's Office
Genessee County, Mich.
Plat of Swanee Beach Plat No. 1
of Section 23 T5N R6E of Range 6E of Township 5N of Range 6E of Genessee County, Mich.
Filed for Record on Feb 27 1957
at 11:00 o'clock
AM
by Earl M. Smith
Register of Deeds
Genessee County, Mich.

KNOW ALL MEN BY THESE PRESENTS, THAT WE, HARVEY E. SWANEBECK AND HELEN H. SWANEBECK, HIS WIFE, AND WILLIAM M. SWANEBECK, A SINGLE MAN, AND MYRTLE M. SCHMID, AS PROPRIETORS, HAVE CAUSED THE LAND EMBRACED IN THE ANNEXED PLAT TO BE SURVEYED, LAID OUT AND PLATTED, TO BE KNOWN AS "SWANEE BEACH PLAT NO. 1," A REPLAT OF PART OF OUTLOT "C" AND A REPLAT OF PART OF BLOCKS 13 AND 14 OF SWANEE BEACH PLAT, SECTION 23, T5N R6E, FENTON TOWNSHIP, GENESSEE COUNTY MICHIGAN, AND THAT THE ROAD AS SHOWN ON SAID PLAT IS HEREBY DEDICATED TO THE USE OF THE PUBLIC.

DEDICATION

WITNESSES: John C. Mackie
JOHN C. MACKIE
B. A. Henderson
B. A. HENDERSON

Harvey E. Swaneebeck
HARVEY E. SWANEBECK
Helen H. Swaneebeck
HELEN H. SWANEBECK
William M. Swaneebeck
WILLIAM M. SWANEBECK
Myrtle M. Schmid
MYRTLE M. SCHMID

STATE OF MICHIGAN)
County of Genessee)

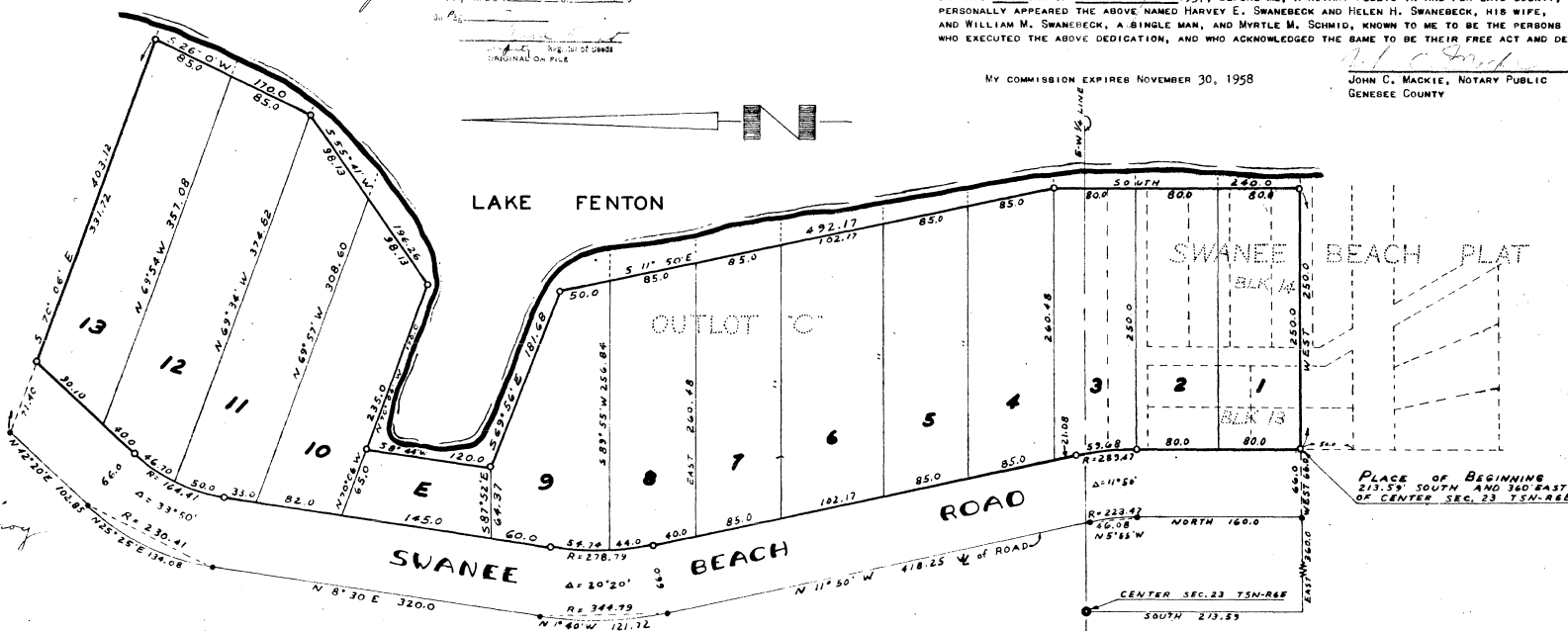
ON THIS 27 DAY OF February 1957, BEFORE ME, A NOTARY PUBLIC IN AND FOR SAID COUNTY, PERSONALLY APPEARED THE ABOVE NAMED HARVEY E. SWANEBECK AND HELEN H. SWANEBECK, HIS WIFE, AND WILLIAM M. SWANEBECK, A SINGLE MAN, AND MYRTLE M. SCHMID, KNOWN TO ME TO BE THE PERSONS WHO EXECUTED THE ABOVE DEDICATION, AND WHO ACKNOWLEDGED THE SAME TO BE THEIR FREE ACT AND DEED

MY COMMISSION EXPIRES NOVEMBER 30, 1958

John C. Mackie
JOHN C. MACKIE, NOTARY PUBLIC
GENESSEE COUNTY

I hereby certify this copy is a true copy of map or plat on file in the Register of Deeds in the records:

Date March 12, 1957
FILED IN ADDITION TO REGULAR DUTY:
Date March 14, 1957
EXAMINED AND APPROVED
Date March 12, 1957
Frank S. Elroy
Auditor General



PLACE OF BEGINNING
213.59' SOUTH AND 360' EAST
OF CENTER SEC. 23 T5N-R6E