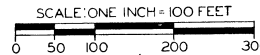


# THOMPSON COMMERCIAL SITES

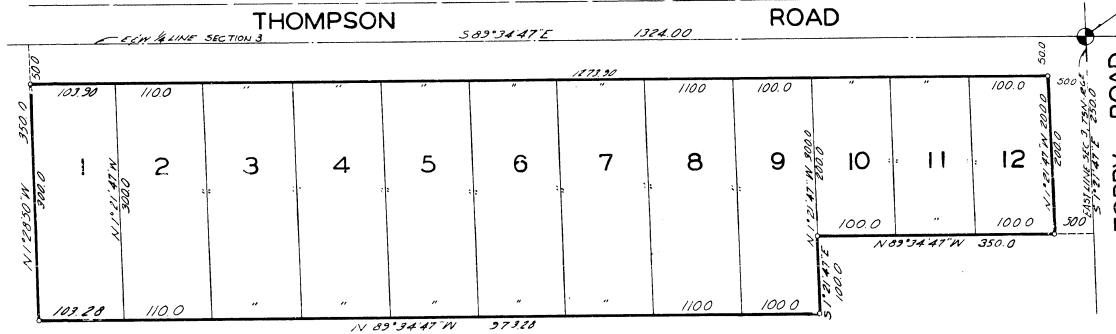
PART OF THE SE 1/4 SECTION 3, T5N-R6E  
TOWNSHIP OF FENTON, GENESSEE COUNTY,  
MICHIGAN



ALL DIMENSIONS ARE IN FEET AND DECIMALS THEREOF

### DESCRIPTION

The land embraced in the annexed plat of "Thompson Commercial Sites", Part of the SE 1/4 Section 3, T5N-R6E, Township of Fenton, Genessee County, Michigan is described as follows: beginning at the E 1/2 corner of Section 3, T5N-R6E; thence S 102°14'17" E along the East line of Section 3 a distance of 250.0 feet; thence N 89°21'47" W 350.0 feet; thence S 102°14'17" E 100.0 feet; thence N 89°21'47" W 972.21 feet; thence S 102°14'17" E 350.0 feet to the SE 1/4 line of Section 3; thence S 89°21'47" E along said E 1/2 line 1321.00 feet to the place of beginning, containing 12 numbered lots.



I hereby certify this copy is a true copy of map or plat recorded in the Register of Deeds for Genessee County, Michigan.

FILED FOR REGISTER'S OFFICE  
March 27 1968  
RECORDED  
March 27 1968  
Plat of Thompson Commercial Sites  
was Recorded this 27 day of March A. D. 1968 at 11:00 AM in Liber 41 on Page 9

By Richard E. Jones Register of Deeds  
Deputy

### DEDICATION

KNOW ALL MEN BY THESE PRESENTS, That we Louis B. Traycik and John Sorokin, Trustees under the terms of a Trust Agreement executed by Frank Hachtel, dated November 30th, 1960, and Gladys Lachtel, Frances Hachtel and Virginia Pollock, by Their Attorneys in Fact, Louis B. Traycik, and John Sorokin have caused the land embraced in the annexed plat to be surveyed, laid out and platted, to be known as Thompson Commercial Sites, Part of the SE 1/4 Section 3, T5N-R6E, Township of Fenton, Genessee County, Michigan and that the road as shown on said plat is hereby dedicated to the use of the public.

Witnesses:  
Frank Pollock  
John Sorokin  
Louis B. Traycik  
Louis B. Traycik  
1000 Beach, Flint, Michigan  
John Sorokin  
121 E. Fourth, Flint, Michigan

STATE OF MICHIGAN) ss  
County of Genessee)

On this 27th day of March 1968 before me, a Notary Public in and for said county, personally came the above named Louis B. Traycik and John Sorokin, known to me to be the persons who executed the above dedication and acknowledged the same to be their free act and deed.

My Commission expires 11-15-1968  
Frank Pollock  
Notary Public-Genessee County

### CERTIFICATE OF APPROVAL BY COUNTY BOARD

This plat was approved on the 27 day of March 1968, by the Genessee County Plat Board.

Earl M. Smith, Register of Deeds  
Anthony Raybone, Drain Commissioner

James F. Markey, County Treasurer  
George J. Dunn, County Clerk

### CERTIFICATE OF MUNICIPAL APPROVAL

This plat was approved by the Township Board of the Township of Fenton at a meeting held on the 27 day of March 1968, and is in compliance with Section 166, and the width of lots conforms with the requirements of Section 30, Act 412 of 1929, as amended.

Grant Horrell  
Grant Horrell, Township Clerk

### COUNTY TREASURER'S CERTIFICATE RELATING TO TAXES

Office of County Treasurer, Genessee County, Michigan

I hereby certify that there are no tax liens or titles held by the State on the land described herein, and that there are no tax lines or titles held by individuals on said lands for the five years preceding the day of 1968, and that the taxes for said period of five years are paid as shown by the records of this office. This certificate does not apply to taxes, if any, now in process of collection by township, city, or village collection officers.

James F. Markey, County Treasurer

### CERTIFICATE OF APPROVAL BY BOARD OF COUNTY ROAD COMMISSIONERS

This plat has been examined and was approved on the 27th day of March 1968, by the Genessee County Board of Road Commissioners.

George Sleight, Com.  
L. E. Leach, Com.  
C. W. Fullard, Com.

### SURVEYOR'S CERTIFICATE

I hereby certify that the plat hereon delineated is a correct one and that permanent metal monuments consisting of iron rods at least one half inch in diameter and thirty-six inches in length encased in concrete cylinders at least four inches in diameter and thirty-six inches in length have been placed at all points marked thus "O" as thereon shown at all angles in the boundary of the plat, at the intersection of lines of streets, and at the intersection of the lines of streets with the boundaries of the plat as shown on said plat.



Frederick J. Shaltz, Jr.  
Frederick J. Shaltz, Jr., A.L.S. No. 13595  
201 Welch Boulevard, Flint, Michigan

CERTIFYING FEE PAID  
GENESSEE COUNTY TREASURER

GOULD ENGINEERING INC. FLINT MICHIGAN

47277