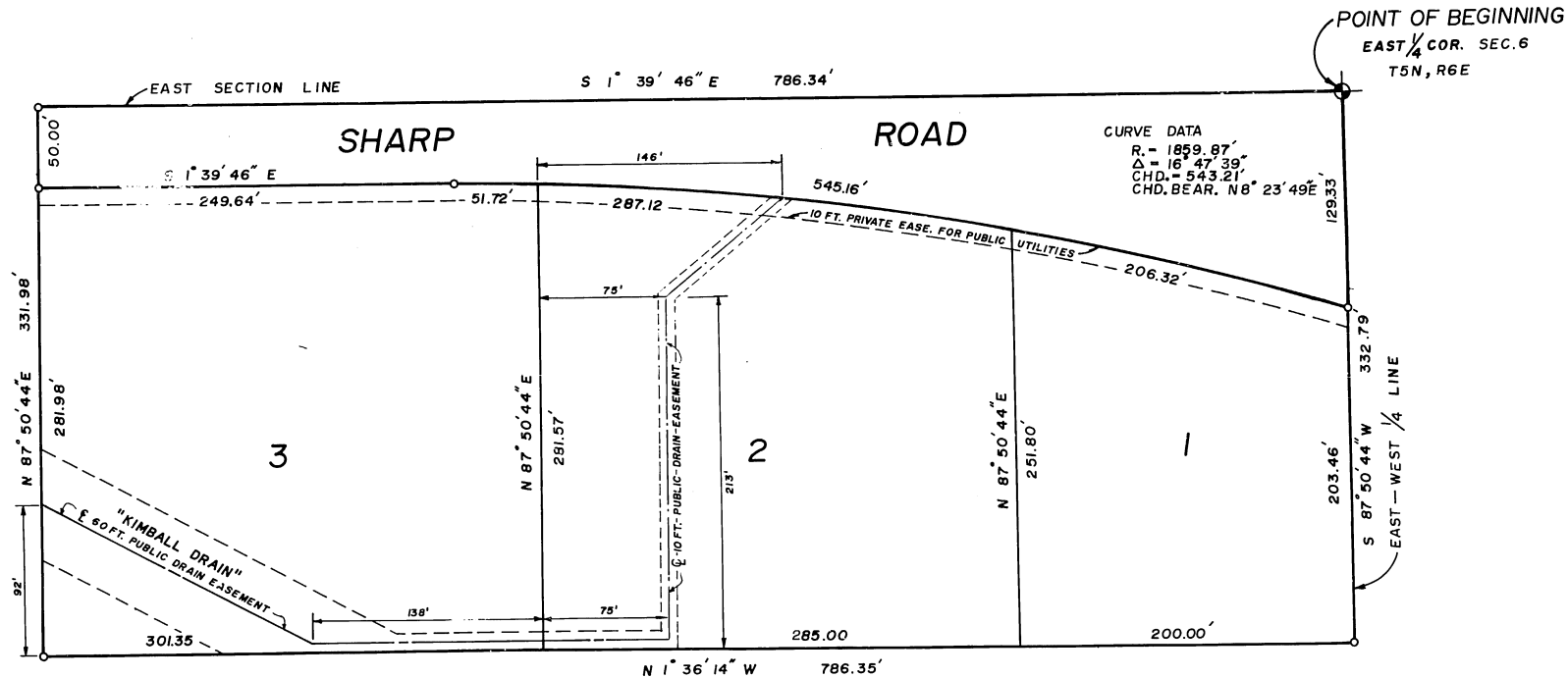
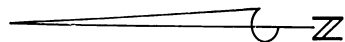


# WELSHANS PLAT

A Part of the North-East 1/4  
Section 6, T5N, R6E  
Fenton Twp, Genesee Co, Mich.



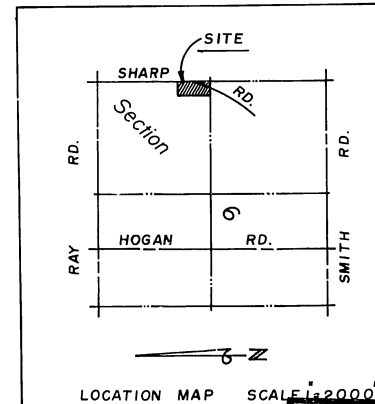
### PLAT LEGEND

- ALL DIMENSIONS ARE SHOWN IN FEET
- ALL CURVILINEAR DIMENSIONS ARE SHOWN ALONG THE ARC
- ALL BEARINGS ARE IN RELATION TO THE "TRUE MERIDIAN" BASED ON SOLAR OBSERVATION
- THE SYMBOL "o" INDICATES A CONCRETE MONUMENT
- ALL LOT MARKERS ARE 1/2" IRON BARS AND ARE 18" LONG



THIS IS A TRUE COPY OF  
THE RECORDED PLAT

*John E. Monroe*  
JOHN E. MONROE  
STATE TREASURER  
By *Richard E. Lunsky*  
Richard E. Lunsky, Plat Examiner  
October 24, 1976.



**E. E. ANDERSON & ASSOC, INC.**

CIVIL ENGINEERS & LAND SURVEYORS  
9323 BENNETT LAKE RD.  
FENTON, MI. 48430  
TELEPHONE 629-8661

# WELSHANS PLAT

A Part of the North-East 1/4  
Section 6, T5N, R6E  
Fenton Twp, Genesee Co, Mich.

### COUNTY TREASURER'S CERTIFICATE

The records in my office show no unpaid taxes or special assessments for the five years preceding July 25, 1978 involving the lands included in this plat.

William P. Barkey, Jr.  
William P. Barkey, Jr.  
County Treasurer  
Genesee County, Michigan

### COUNTY DRAIN COMMISSIONER'S CERTIFICATE

Approved on AUG 2, 1978 as complying with Section 192 of Act 288, P.A. 1967 and the applicable rules and regulations published by my office in the County of Genesee.

Anthony Ragnone  
Anthony Ragnone  
Drain Commissioner

### CERTIFICATE OF COUNTY ROAD COMMISSIONERS

Approved on Aug 3, 1978 as complying with Section 183 of Act 288, P.A. 1967 and the applicable published rules and regulations of the board of road Commissioners of Genesee County.

Preston E. Schmidt  
Preston E. Schmidt, Chairman

Raymond M. Newman  
Raymond M. Newman, Member

John E. Hajjilne  
John E. Hajjilne, Member

### CERTIFICATE OF MUNICIPAL APPROVAL

I certify that this plat was approved by the Township Board of Fenton Township, at a meeting held Aug 7, 1978 and was reviewed and found to be in compliance with Act 288, P.A. 1967. The preliminary plat was approved by Genesee County Health Dept. on March 17, 1978.

Warren Miksch  
Warren Miksch

### COUNTY PLAT BOARD CERTIFICATE

This plat has been reviewed and is approved by the Genesee County Plat Board on Aug 13, 1978 as being in compliance with all of the provisions of Act 288, P.A. 1967, and the Plat Board's applicable rules and regulations.

William P. Barkey, Jr.  
William P. Barkey, Jr.  
County Treasurer

Floyd J. McCree  
Floyd J. McCree  
Register of Deeds

Michael J. Carr, County Clerk

### RECORDING CERTIFICATE

State of Michigan)ss  
County of Genesee)

This plat was received for record on 6th day of October 1978, at 2:43 P.M., recorded in Liber 57 of plats on Pages 1-2.

Floyd J. McCree  
Floyd J. McCree  
Register of Deeds

We, as proprietors, certify that we caused the land embraced in this plat to be surveyed, divided, mapped and dedicated as represented on this plat and that the streets are for the use of the public; that the utility easements are private easements and that all other easements are for the uses shown on the plat.

Witnesses

William J. Angus  
William J. Angus

Timothy A. Roeder  
Timothy A. Roeder

Roger P. Welshans  
Roger P. Welshans

11250 Sharp Road  
Linden, Michigan 48451

Jill L. Welshans  
Jill L. Welshans

State of Michigan  
Genesee County

Personally came before me this 19th day of July, 1978, Roger P. Welshans and Jill L. Welshans, his wife, to me known to be the persons who executed the foregoing instrument, and acknowledged that they executed the same as their free act and deed.

Notary Public

Barbara Ann Anderson  
BARBARA ANN ANDERSON  
Livingston County

My commission expires

April 18, 1981

Michigan,

acting in Genesee County

### SURVEYOR'S CERTIFICATE

I Edward E. Anderson, Surveyor, certify:

That I have surveyed, divided and mapped the land shown on this plat, described as follows: "Welshans Plat" a subdivision of part of the NE 1/4 of Section 6, T5N-R6E, Fenton Township, Genesee Co, Michigan, more particularly described as commencing at the East 1/2 corner of said Section 6 for a point of beginning, thence S 87° 50' 44" W, 332.79' along the East and West 1/2 line of said Section 6, thence N 1° 36' 14" W, 786.35', thence N 87° 50' 44" E, 331.98', to the East line of said Section 6, thence S 1° 39' 46" E, 786.34' along the East line of said Section 6 to the point of beginning.

This Plat contains 3 lots numbered 1 to 3 both inclusive, that I have made such survey, land division and plat by the direction of owners of such land.

That such Plat is a correct representation of all the exterior boundaries of the land surveyed and the subdivision of it.

That the required monuments and lot markers have been located in the ground or that the surety has been deposited with the municipality as required by Section 125 of the Act.

That the accuracy of the survey is within the limits required by Section 126 of the Act.

That the bearings shown on the plat are expressed as required by Section 126 (3) of the Act as explained in the legend.

Date: 7-19-78

Edward E. Anderson  
Edward E. Anderson  
Registered Land  
Surveyor #11495  
President - E.E. Anderson & Assoc. Inc.  
9323 Bennett Lake Road  
Fenton, Michigan 48430

