

DESCRIPTION OF LAND PLATTED

The land embraced in the annexed plat of "WENWOOD PLAT NO. 5", part of the SW 1/4 Section 13, T5N R6E, Fenton Township, Genesee County, Michigan, and a replat of Lot "A" of Wenwood Plat #3, an part of Lots 70, 71, and 72 of Wenwood Plat #2, as recorded, Genesee County, Michigan, is described as follows: Beginning at a point that is S 87° 57' W 1434.9 feet and N 4° 43' E 375.67 feet, and N 29° 53' W 169.19 feet from the St post of said Section 13, thence N 86° 27' E 179.56 feet, thence N 89° 33' W 50 feet, thence N 86° 27' E 210 feet, thence N 9° 33' W 60 feet, thence S 86° 27' W 210 feet, thence N 3° 33' W 166.70 feet, thence S 76° 18' W 326 feet, thence N 85° 05' W 100 feet, thence N 47° 40' W 195.45 feet, thence N 63° 19' W 180.37 feet, thence S 45° 39' W 194.20 feet, thence S 36° 43' E 112.91 feet, thence S 18° 28' E 137.90 feet, thence S 49° 20' E 169.04 feet, thence N 60° 07' E 236.79 feet, thence S 29° 53' E 108.71 feet to the place of beginning. This plat contains seventeen lots. Lots 145 through 159 extend to the waters edge.

DEDICATION

KNOW ALL MEN BY THESE PRESENTS, that we, Louise Wendell, single, and R. Murray Wendell and Helen P. Wendell, his wife, as proprietors, have caused the land embraced in the annexed plat to be surveyed, laid out, and platted, to be known as "WENWOOD PLAT NO. 5", part of the SW 1/4 Section 13, T5N R6E, Fenton Township, Genesee County, Michigan, and a replat of Lot "A" of Wenwood Plat #3, and part of Lots 70, 71, and 72 of Wenwood Plat #2, as recorded, Genesee County, Michigan, and that Edgewater Drive, a private road as shown on said plat is hereby dedicated to the use of the lot owners.

Witnesses:

John C. Mackie, Darwin L. Hauglie

Louise Wendell, R. Murray Wendell, Helen P. Wendell

STATE OF MICHIGAN) County of Genesee)

On this 27 day of July 1956, before me, a notary public in and for said county, personally appeared the above named Louise Wendell, single, and R. Murray Wendell and Helen P. Wendell, his wife, known to me to be the persons who executed the above dedication, and who acknowledged the same to be their free act and deed.

My commission expires November 30, 1958

John C. Mackie, Notary Public Genesee County

CERTIFICATE OF MUNICIPAL APPROVAL

This plat was approved by the Township Board of the Township of Fenton, at a meeting held on the 10th day of May 1956.

Reapproved - G. G. Lutz, Township Clerk

CERTIFICATE OF APPROVAL BY BOARD OF COUNTY ROAD COMMISSIONERS

This plat has been examined and was approved on the 15 day of April 1956 by the Genesee County Board of Road Commissioners.

A. W. Bullard, Commissioner; Harold Bergh, Commissioner; Rob't G. Stoddard, Commissioner

CERTIFICATE OF APPROVAL BY COUNTY BOARD

This plat was approved on the 15 day of APR 1956.

Earl M. Smith, Register of Deeds; James P. Barkey, County Treasurer; George O. Dunn, County Clerk

SURVEYOR'S CERTIFICATE

I hereby certify that the plat hereon delineated is a correct one, and that permanent metal monuments consisting of bars one-half inch in diameter and 36 inches in length, encased in a concrete cylinder 4 inches in diameter and 36 inches in depth have been placed at all points marked thus "o" as thereon shown at all angles in the plat boundaries, at the intersection of streets, and at the intersection of street with the boundaries of the plat as shown on said plat.

John C. Mackie, R.L.S. #7434

COUNTY TREASURER'S CERTIFICATE RELATING TO TAXES

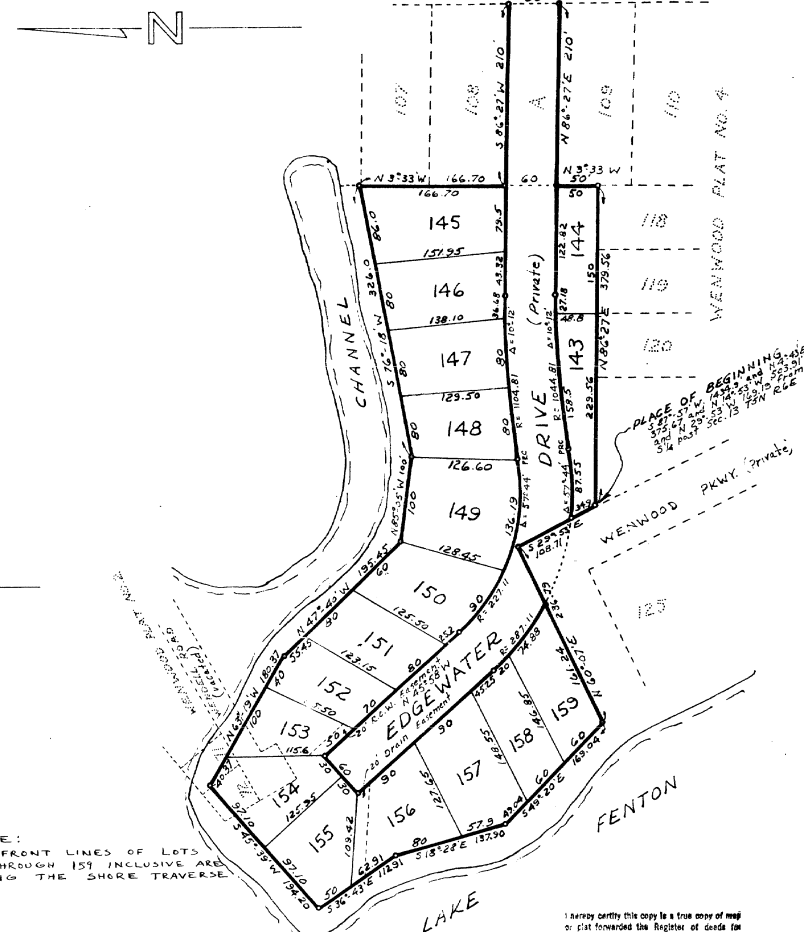
Office of the County Treasurer, Genesee County, Michigan. I hereby certify that there are no tax liens or titles held by the State on the lands described hereon, and that there are no tax liens or titles held by individuals on said lands for the five years preceding the 15th day of April 1956, and that the taxes for said period of five years are paid as shown by the records of this office. This certificate does not apply to taxes, if any, now in process of collection by township, city, or village collection officers.

James P. Barkey, County Treasurer

WENWOOD PLAT NO 5

PART OF THE SW 1/4 SECTION 13 T5N R6E, FENTON TWP, GENESSEE COUNTY, MICHIGAN, AND A REPLAT OF LOT "A" OF WENWOOD PLAT #3, AND PART OF LOTS 70, 71, & 72 OF WENWOOD PLAT #2 AS RECORDED, GENESSEE COUNTY, MICHIGAN. SCALE 1" = 100'

FENTON ROAD U.S. 23



NOTE: THE FRONT LINES OF LOTS 145 THROUGH 159 INCLUSIVE ARE ALONG THE SHORE TRAVERSE

4-22-58 James P. Barkey

COPY Register's Office James County Plat of Wenwood Plat No. 5 was Recorded this 24th day of April A.D. 1956 in Liber 23 of Plate on Page 29 Shirley Hamilton

I hereby certify this copy to a true copy of the original plat forwarded the Register of Deeds for recording. Date April 24, 1958 FILED IN AUDITOR GENERAL'S DEPT. Date April 25, 1958 EXAMINED AND APPROVED Date April 24, 1958

CERTIFYING FEE PAID \$1.70 James P. Barkey