

WOODLAND ACRES

PART OF THE SE 1/4 OF THE SW FRACTIONAL 1/4 SECTION 19, T 34 N., R 6 E. OF THE MICHIGAN MERIDIAN, GENESEE COUNTY, MICHIGAN.

DEDICATION

KNOW ALL MEN BY THESE PRESENTS, That We, Thomas K. Swingle and Harriet Swingle, his wife, as proprietors, have caused the land embraced in the annexed plat to be surveyed, laid out and platted, to be known as "WOODLAND ACRES" Part of the SE 1/4 of the SW fractional 1/4 Section 19 TEN R 6 E of the Michigan Meridian, Genesee County, Michigan, and that the road as shown on said plat is hereby dedicated to the use of the public.

Witnesses:

Robert Surfers
Robert Surfers

Thomas K. Swingle
Thomas K. Swingle
Harriet Swingle
Harriet Swingle

STATE OF MICHIGAN
County of Genesee

On this 22nd day of June 1954, before me, a notary public in and for said county personally appeared the above named Thomas K. Swingle and Harriet Swingle, his wife, known to me to be the persons who executed the above dedication and who acknowledged the same to be their free act and deed.

My Commission Expires August 1957 Notary Public, Genesee Co., Michigan.

DESCRIPTION OF LAND PLATTED

The land embraced in the annexed plat of "WOODLAND ACRES" Part of the SE 1/4 of the SW 1/4 of Section 19 TEN R 6 E of the Michigan Meridian, Genesee County, Michigan is described as follows: Beginning at a point N. 89° 17' W. 232.36 feet from the South Quarter Post of said Section 19, thence N. 89° 17' W. 912.0 feet, thence N. 0° 55' E. 123.0 feet, thence S. 89° 17' E. 912.0 feet, thence S. 0° 55' W. 123.0 feet to the place of beginning.

CERTIFICATE OF MUNICIPAL APPROVAL

This plat was approved by the Township Board of the Township of Penton at a meeting held on the 4th day of June 1954.

Geo. C. Lutz
Geo. C. Lutz - Township Clerk

COUNTY TREASURER'S CERTIFICATE RELATING TO TAXES

Office of County Treasurer, Genesee County, Michigan.

I hereby certify that there are no tax liens or titles held by the State on the lands described hereon, and that there are no tax liens or titles held by individuals on said lands for the five years preceding the 22nd day of June 1954, and that the taxes for said period of five years are paid as shown by the records of this office.

James P. Berkeley
James P. Berkeley - County Treasurer

CERTIFICATE OF APPROVAL BY COUNTY BOARD

This plat was approved on the 22nd day of June 1954.

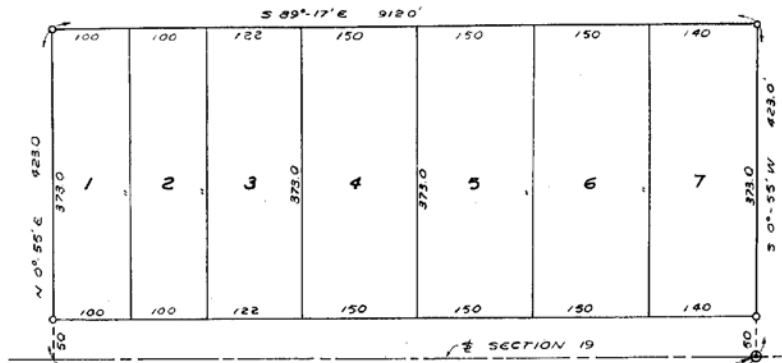
Carl M. Smith James P. Berkeley
Carl M. Smith - Reg. of Deeds James P. Berkeley - County Treasurer

George C. Dunn Bernard E. O'Brien-Irwin
George C. Dunn - County Clerk Bernard E. O'Brien-Irwin - Commissioner

CERTIFICATE OF APPROVAL BY BOARD OF COUNTY ROAD COMMISSIONERS

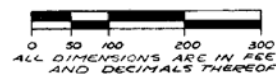
This plat has been examined and was approved by the Genesee County Board of Road Commissioners on the 22nd day of June 1954.

C. N. Bullard Robert Stoddard
C. N. Bullard - Commissioner Robert Stoddard - Commissioner

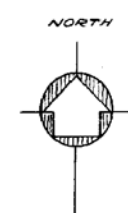


SILVER LAKE ROAD
N 89° 17' W 912.0'

SCALE 1 INCH = 100 FEET



PLACE OF BEGINNING
N 89° 17' W. 232.36 FROM THE
S 1/4 POST. SEC 19, TEN R 6 E
GENESEE COUNTY, MICHIGAN



COPY

Recorder's Office

County

Part of

Book

Page

Recorded

Filed

Index

Map

Other

I hereby certify that this map is a true copy of the map as filed with the Register of Deeds for recording.

James P. Berkeley
James P. Berkeley - County Treasurer

SURVEYOR'S CERTIFICATE

I hereby certify that the plat herein delineated is a correct one and that permanent metal monuments consisting of bars not less than one half inch in diameter and 18 inches in length encased in a concrete cylinder at least four inches in diameter and 18 inches in depth have been placed at all points marked thus "o" as thereon shown at all angles in the boundaries of the land platted, at the intersections of the lines of the streets, and at the intersections of the lines of the streets with the boundaries of the plat as shown on said plat.

Clarence F. Alkman
Clarence F. Alkman - Reg. Surveyor 5102

GOULD ENGINEERING
FLINT, MICHIGAN

35153